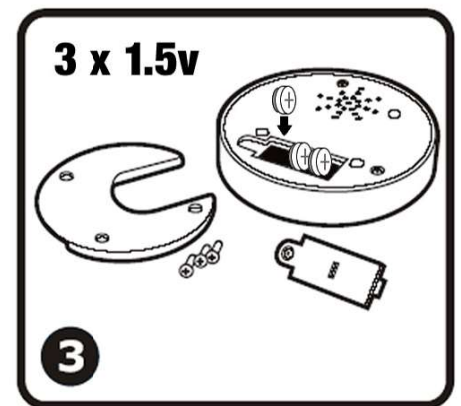
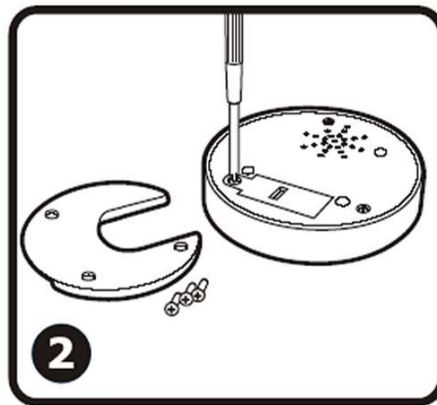
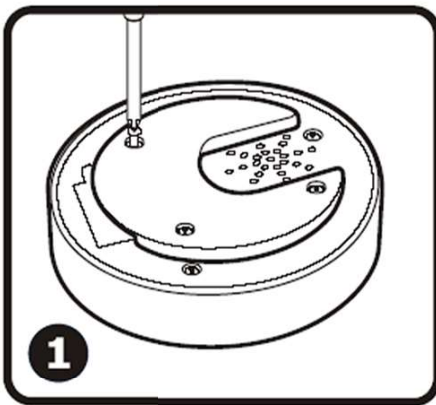


How to remove and insert batteries

Please see diagrams below. Each Talking Tin requires three AG13, (LR44), Button Cell Batteries. One free set of batteries is supplied and fitted in each unit.

1. Remove the U shaped section by loosening the 3 screws.
2. Remove the screw holding the battery compartment cover.
3. Replace all three of the batteries with careful attention to the polarity.
4. Re-assemble in the reverse order.
5. Do NOT charge non-rechargeable batteries.
6. Rechargeable batteries must be removed from this product before being charged.
7. Rechargeable batteries must only be charged under adult supervision.
8. Different types of batteries or new and used batteries must not be mixed.
9. Old exhausted batteries must be removed from this product.
10. The power supply terminals must not be short-circuited.

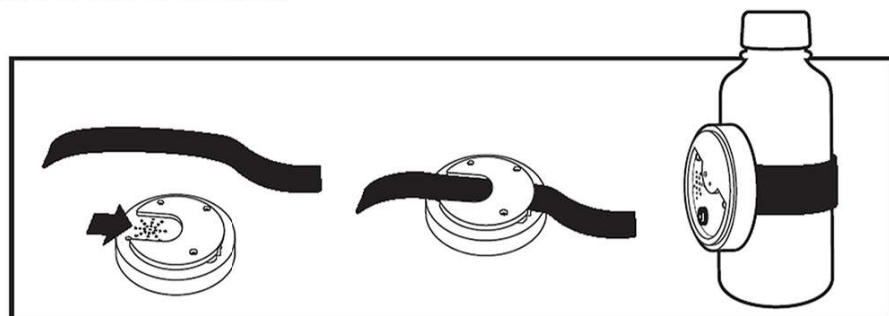
NOTE: You can purchase spare batteries from our web site, www.TalkingProducts.com



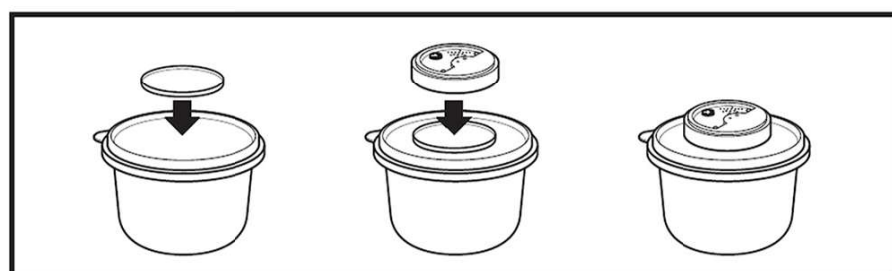
Accessories

Elastic Straps and Self-Adhesive Metal Adapters are available to purchase separately. These accessories will allow you to attach your Talking Tin to many other household items such as Bottles, Sprays and Storage Containers. More information about these accessories can be found on our web site.

Elastic Strap



Self-Adhesive Adapter



NOTE: This document contains important information, please retain for future reference.