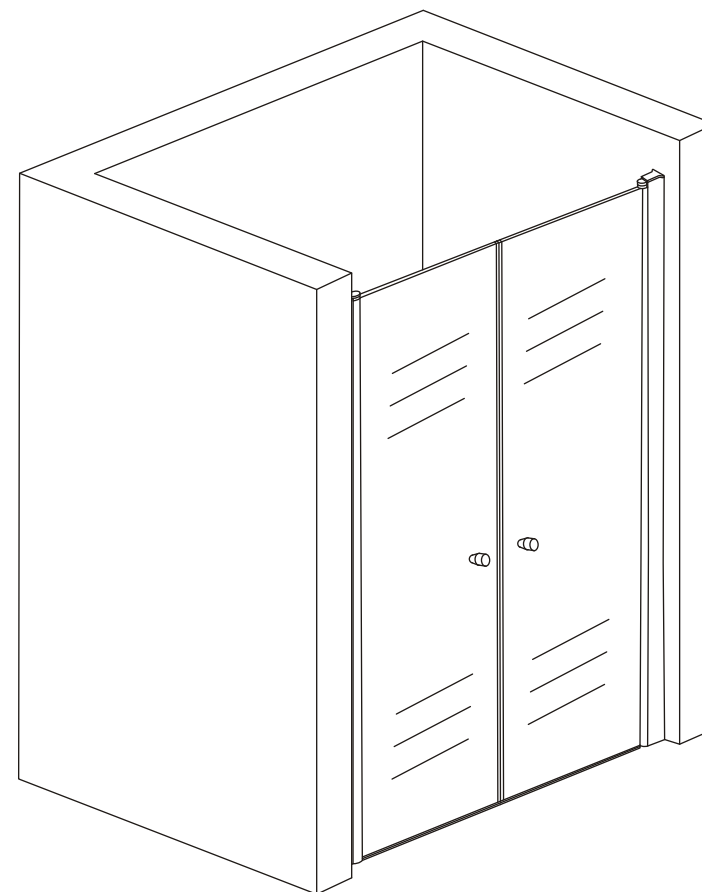


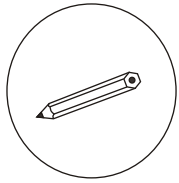
# INSTALLATION MANUAL



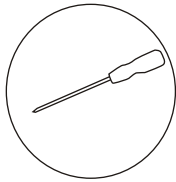
SHOPBAGNO  
DESIGN LOVERS

**RoHS**  **ISO9001:2000**

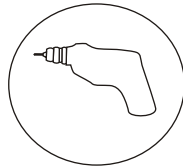
# TOOL PICTURE



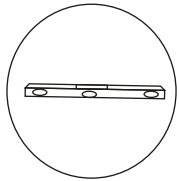
Pencil



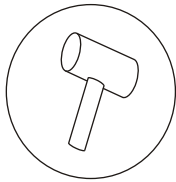
Cross screw driver



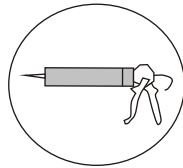
Drill machine



Level ruler

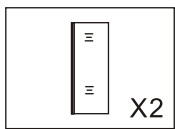


Rubber hammer

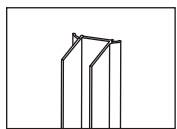


Silicon gel

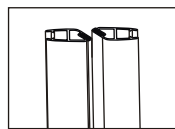
## Accessory list



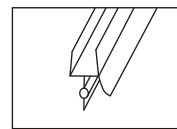
Glass X2



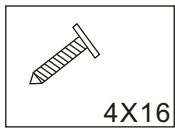
Wall profile



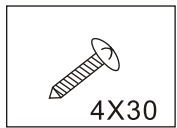
CT-6BMX90



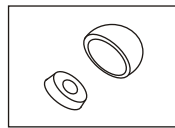
water-proof gasket



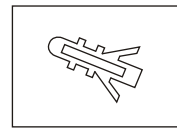
Screw 4X16



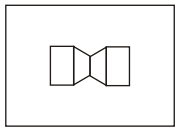
Screw 4X30



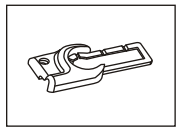
PJ-4553



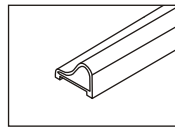
Expand tube



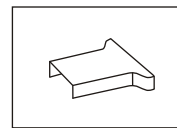
LS-1201



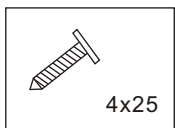
PJ-4644



Aluminum bottom bar



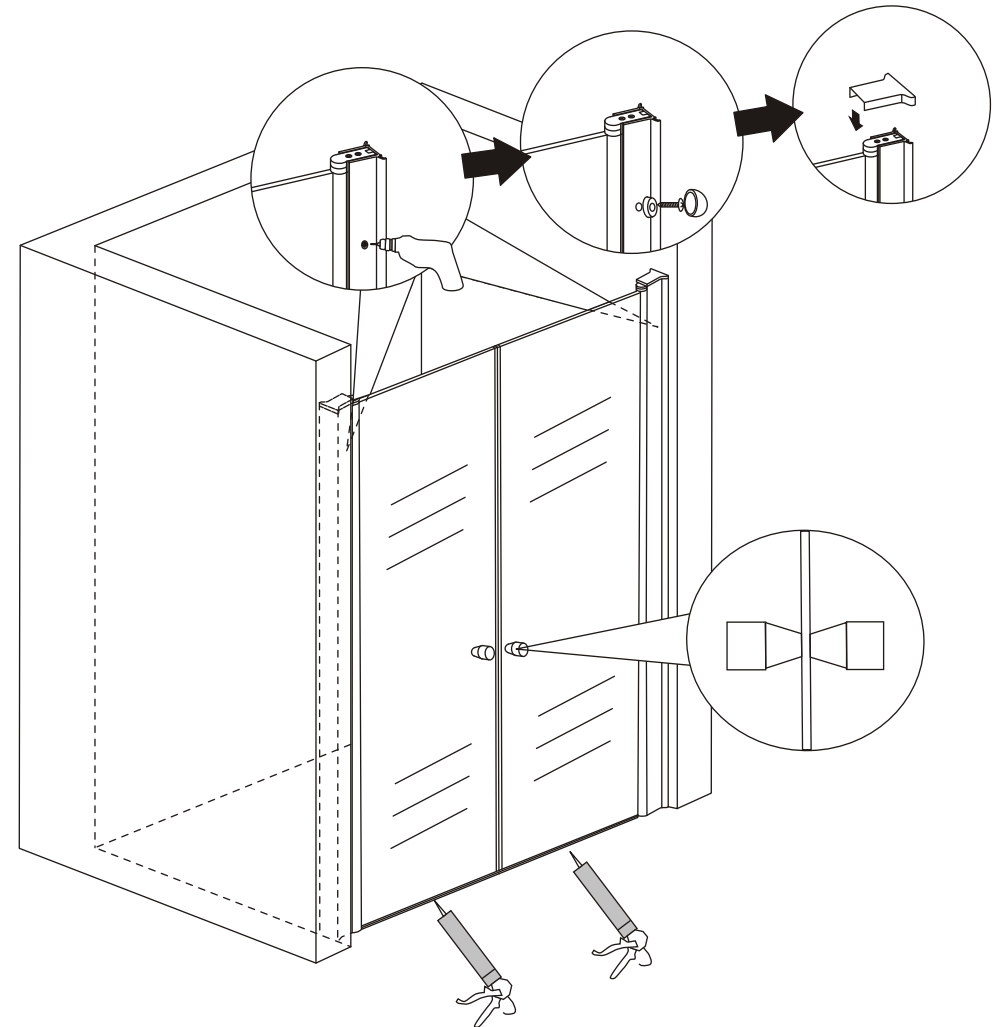
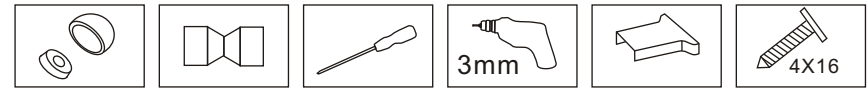
PJ-4643



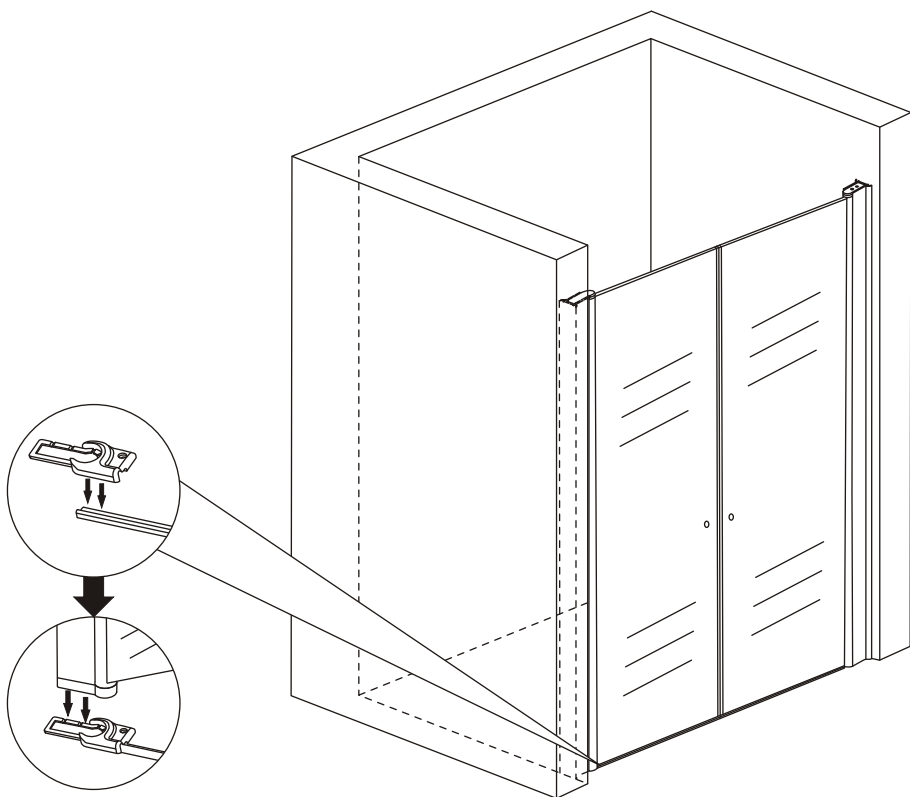
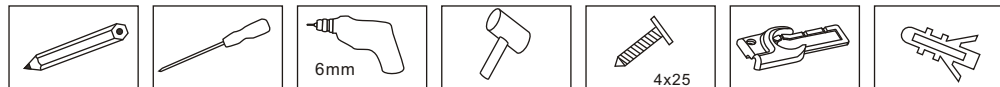
Screw 4x25

1. Use 3.2mm drill bit to make two holes on the aluminium and use screws to fix.
2. Install handle on the door.
3. Install the cap on the top.

**Attention: Do not use any corrosion liquid to clean the aluminum and other metal parts when daily maintenance.**

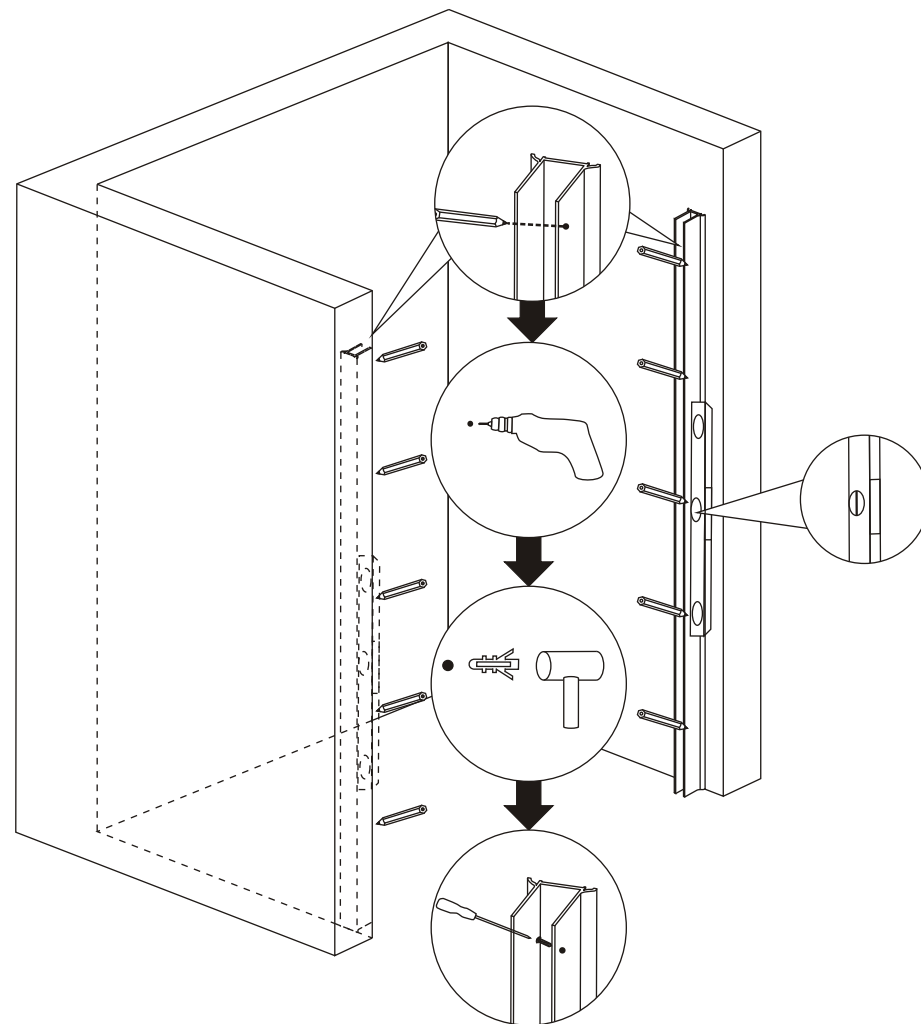
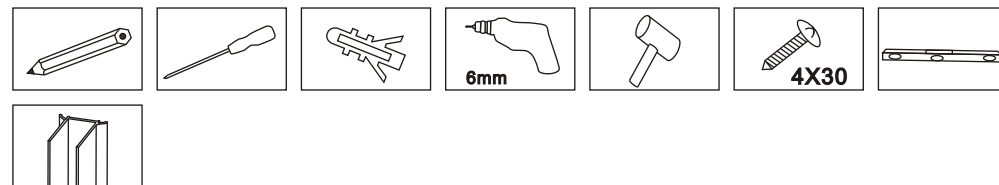


1. Insert one glass door to the wall aluminum profile.
2. Install the decorating parts on the water-proof aluminum profile.  
Insert the glass door into the decorating parts. Make sure the install position of the aluminum profile decorating parts, then paint line, punching, insert the expansion screws, tighten the screws and fixed the decorating parts.



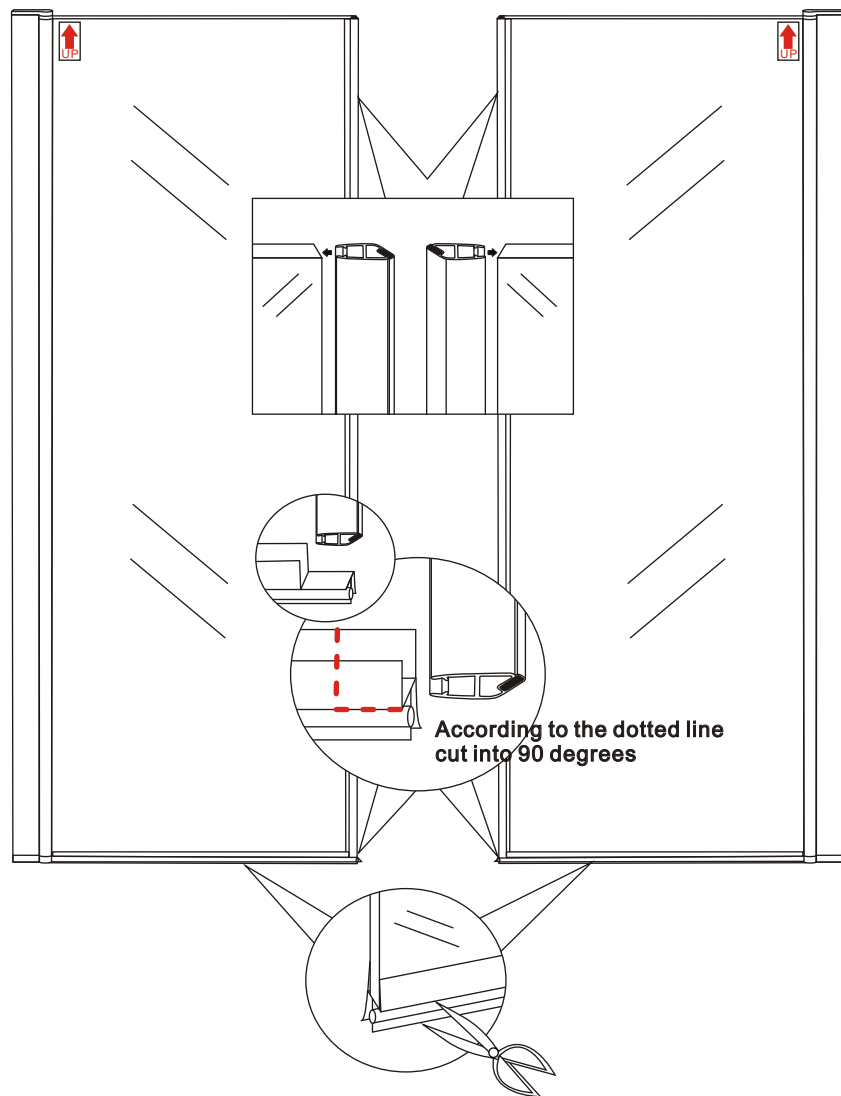
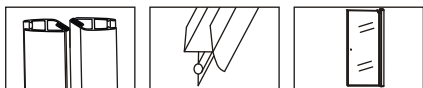
5

1. Put aluminium profile on the wall and use level ruler to make it straight.
2. Use pencil draw holes on the wall.
3. Use 6mm drill bit to make holes on the wall.
4. Insert screw space pipe in the wall and screw it.



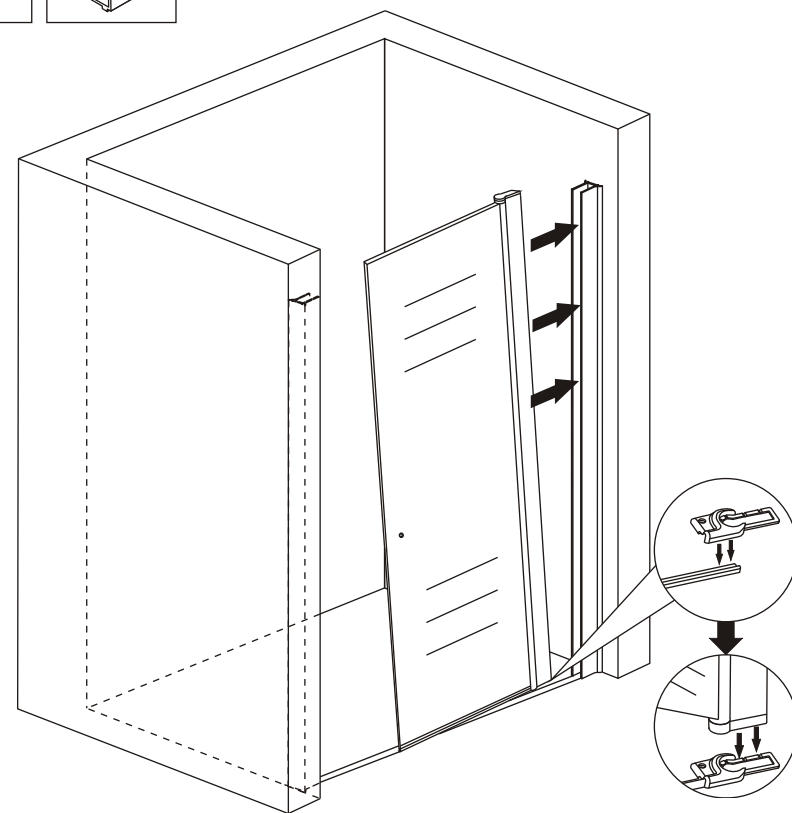
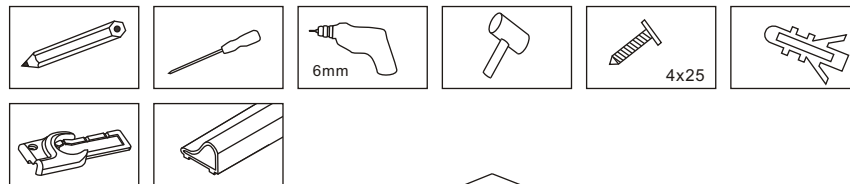
2

1. Install the gasket at the bottom of glass.
2. Cut the length and angle of the water-proof gasket according to the actual situation, then install it.



3

1. Insert one glass door to the wall aluminum profile.
2. Install the decorating parts on the water-proof aluminum profile. Insert the glass door into the decorating parts. Make sure the install position of the aluminum profile decorating parts, then paint line, punching, insert the expansion screws, tighten the screws and fixed the decorating parts.



4