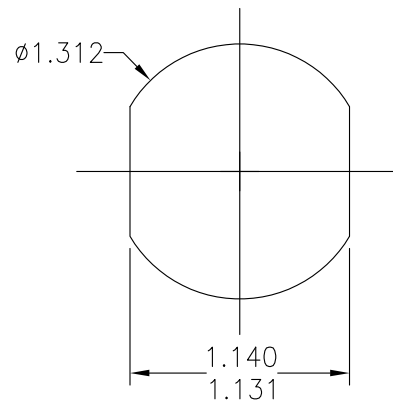
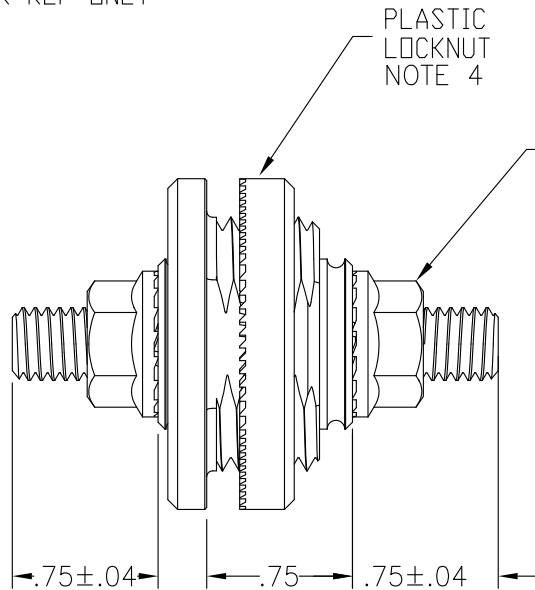


ISO VIEW  
FOR REF ONLY

TYPICAL PANEL CUTOUT  
FOR REFERENCE

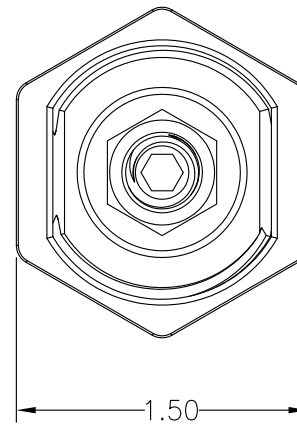


PART NO. PTX-38A-05		(SALES)		
TITLE PASS-THRU (STYLE A) - 3/8"-16				
CUSTOMER STANDARD				
ENGLISH (IN)				SCALE 1:2
REV. #	REVISION	DATE	BY	APPROVE
0	INITIAL RELEASE ECN- 11015	09-01 2017		
1	RELEASE FOR PRODUCTION ECO 13206	05-03 2017	RR	JL
2	INTERNAL UPDATES ECO 13273	06-07 2017	RR	JL



PLASTIC  
LOCKNUT  
NOTE 4

(FLANGE NUT)  
2 PLACES  
NOTES 3 & 5



(PASS-THRU  
INSULATOR)

NOTES:

- MATERIALS: INSULATOR - GLASS FILLED NYLON.  
CORE - COPPER
- COLOR: PTB-38A-05 (BLACK)  
PTR-38A-05 (RED)
- STUD THREAD TYPE 3/8"-16.
- MAXIMUM LOCKNUT MOUNTING TORQUE-10 FT.LBS.
- MAXIMUM STUD MOUNTING TORQUE-20 FT.LBS.



16830 Pheasant Drive  
Brookfield, WI 53005

CONFIDENTIAL - The information contained in this document is the property of GEP Power Products. It is not for public disclosure. Possession of the information does not convey any right to loan, sell or disclose the information. Unauthorized reproduction or use of the information is prohibited. This document is to be returned to GEP Power Products upon completion of the purpose for which it is loaned or upon request.

COPYRIGHT - GEP Power Products  
This is an unpublished work. The disclosure of this work is limited to a select personnel. Further dissemination or disclosure to the public is PROHIBITED. This unpublished work is protected by Federal Copyright law and all rights thereunder are reserved by GEP Power Products.

TOLERANCES UNLESS OTHERWISE SPECIFIED	
METRIC TOL	ENGLISH TOL
1 PL DEC. = .25	2 PL DEC. = ±.01
2 PL DEC. = .13	3 PL DEC. = ±.005

THIRD ANGLE PROJECTION

ANGULAR TOL = ±2°  
FRACTION TOL = ±1/16 IN

Measuring Typical Dims.:

2-4 ALL  
5-8 50%  
9-20 25%

SPECIAL REQUIREMENTS:

CRITICAL DIMENSIONS OR FEATURES TO BE CHECKED DURING ANY SET-UP, ADJUSTMENTS, TOOL CHANGES, OR ANNUAL MAINTENANCE ON TOOLING.

△ DIMENSIONS OR FEATURES TO BE CHECKED FROM RUN TO RUN