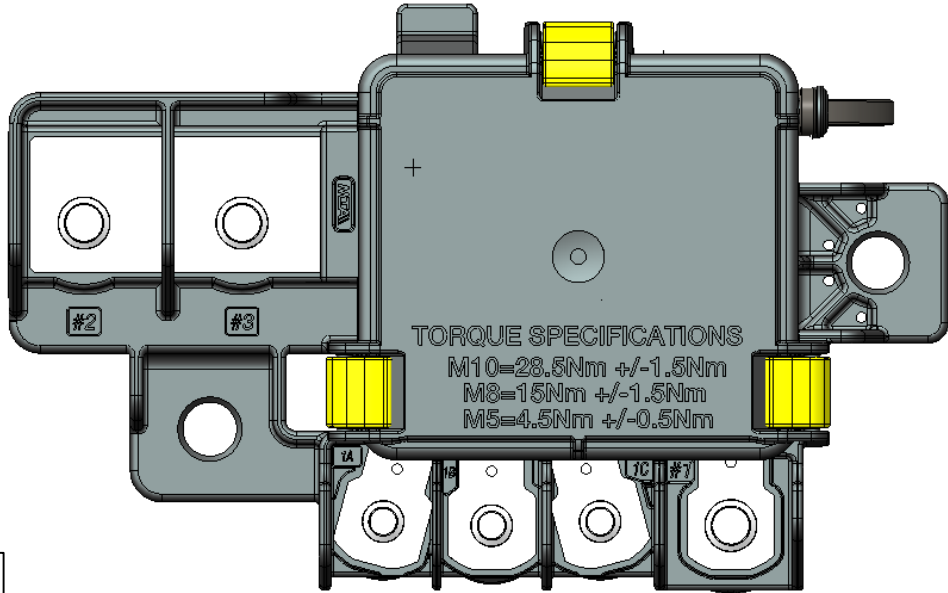
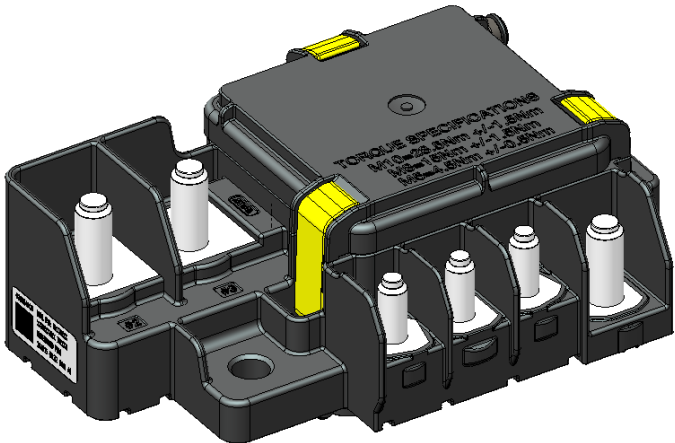
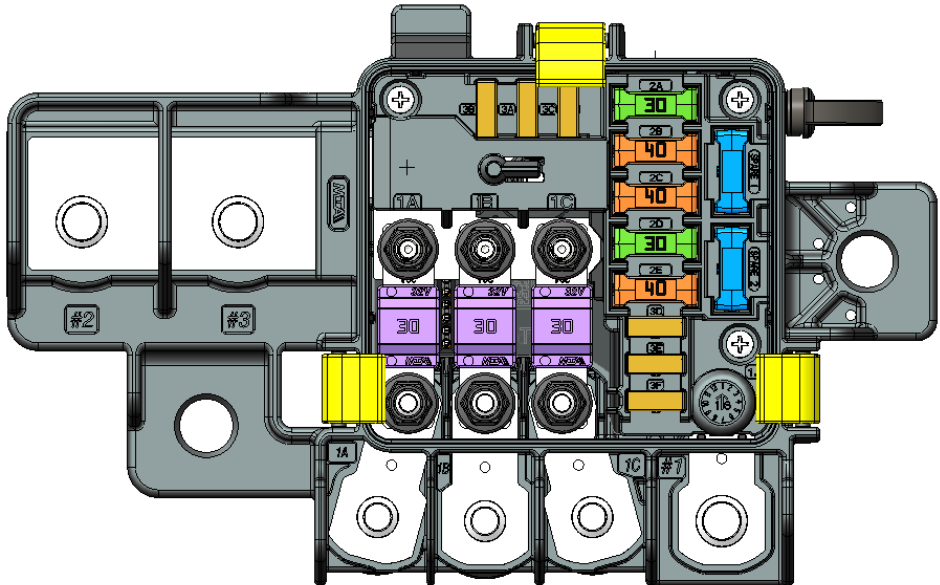
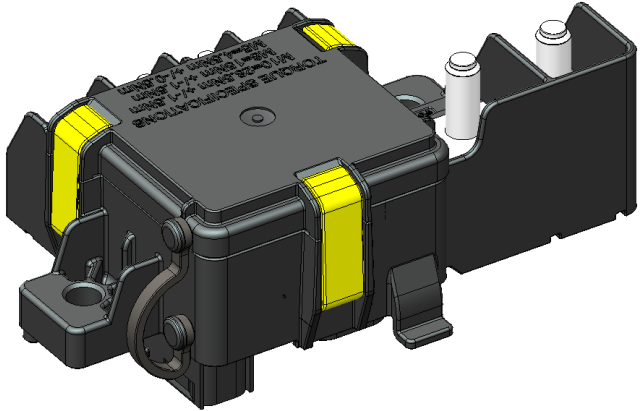


# MEC 25 – POWER DISTRIBUTION UNIT

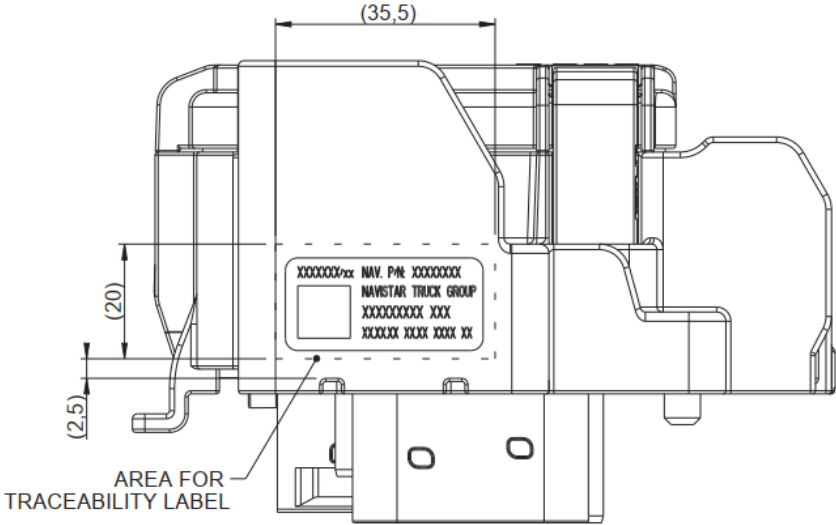
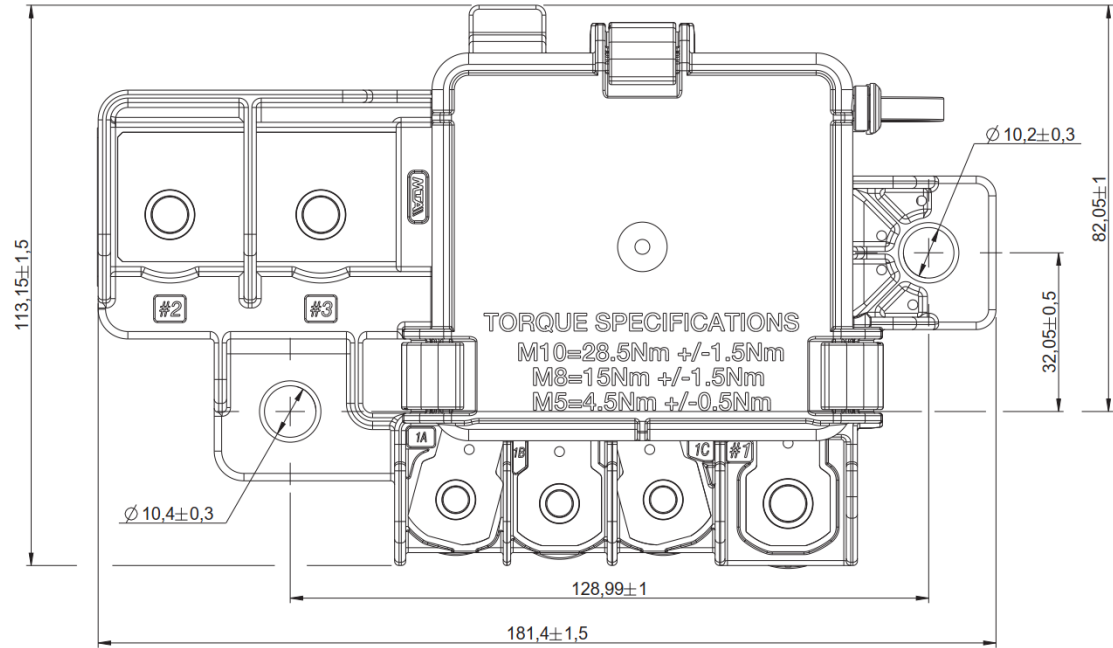
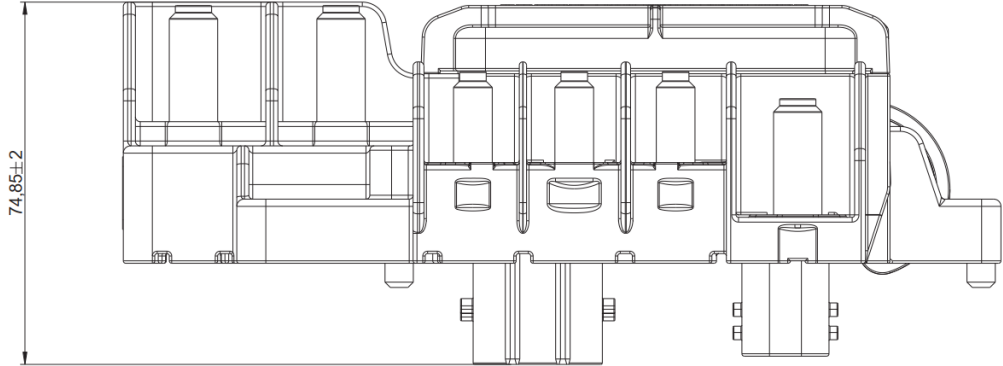
# MEC 25- PRODUCT OVERVIEW



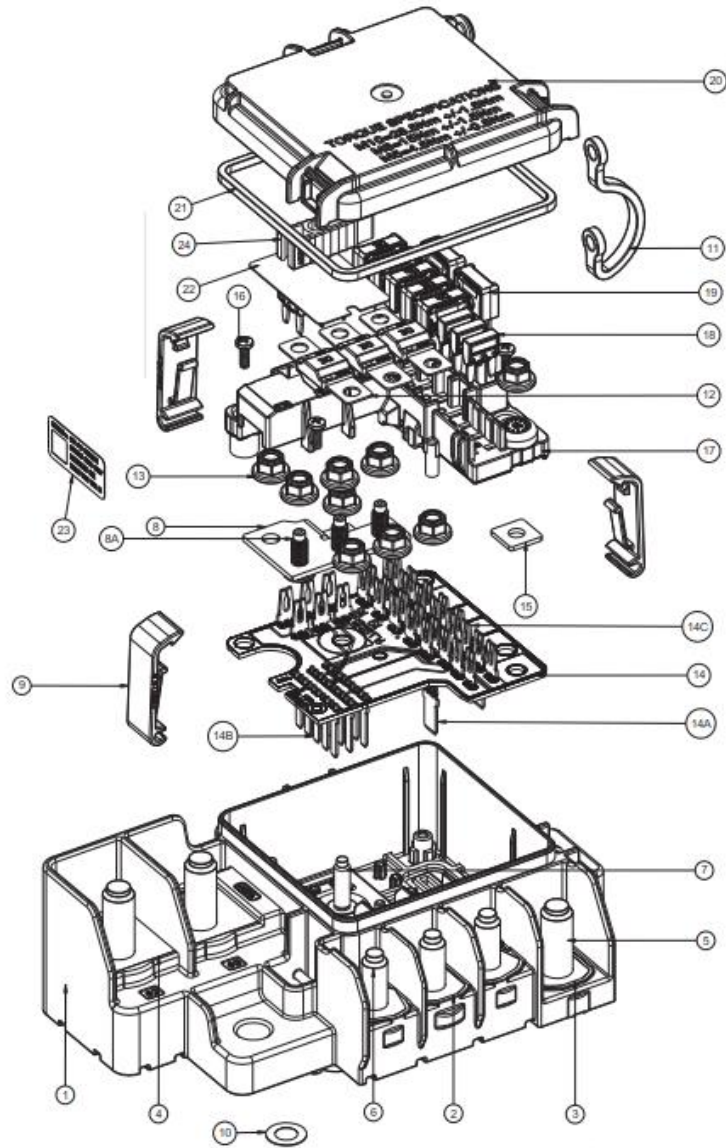
FUSE CONFIGURATION IS ONLY REPRESENTATIVE



# MEC 25— OVERALL DIMENSIONS

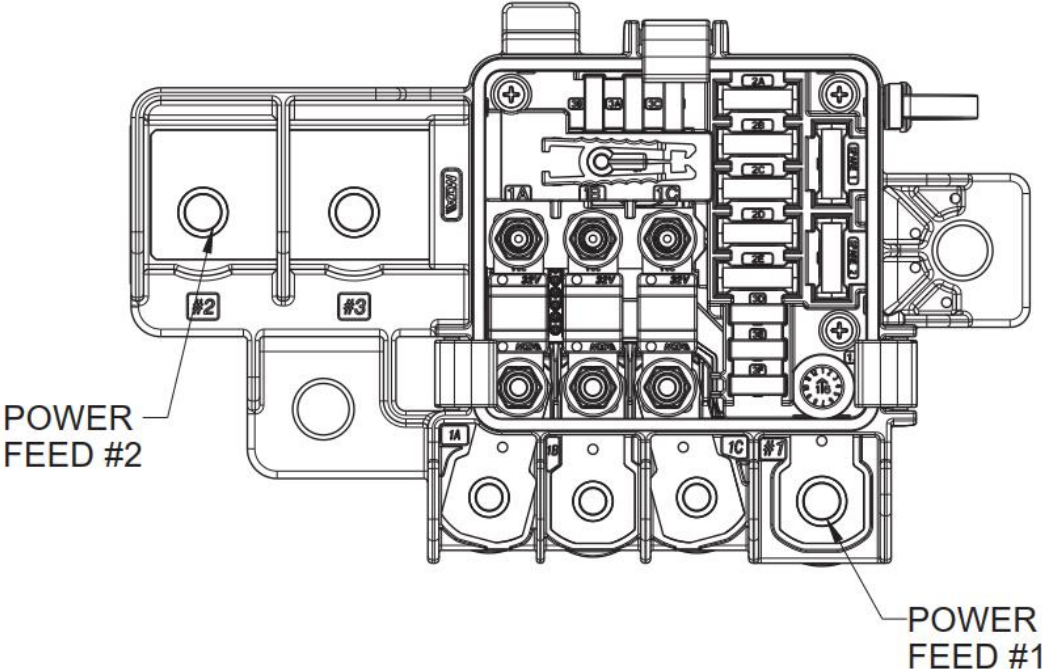
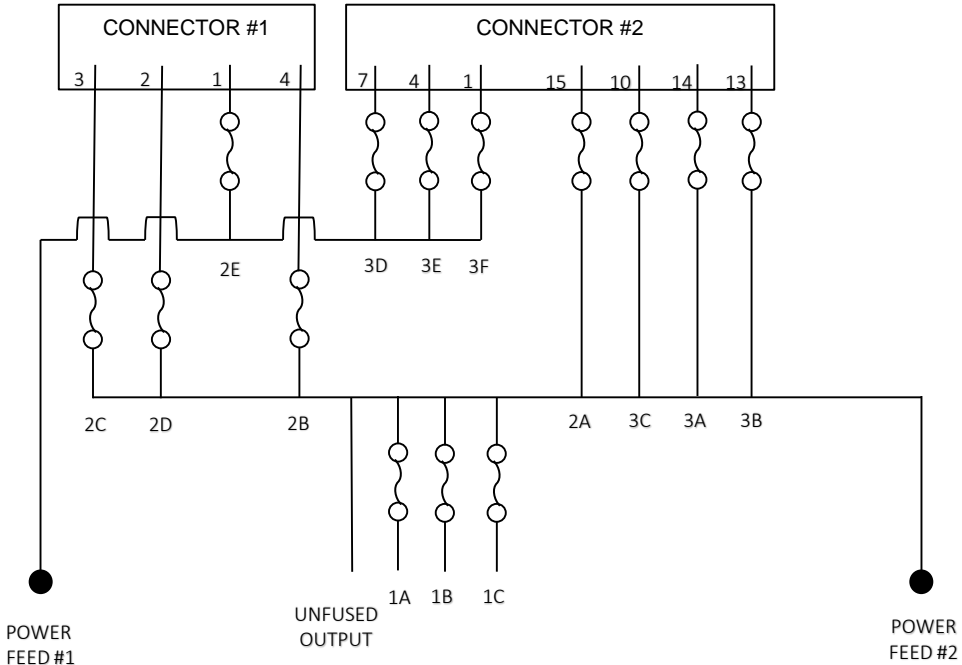


# MEC 25– BOM

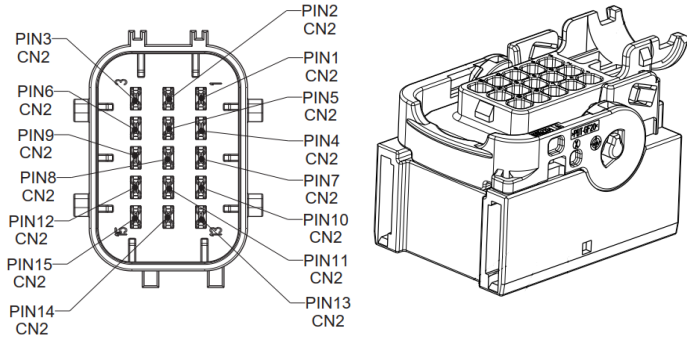


POS	Description	Material
1	FUSE HOLDER BODY	PA66-GF25 V2 BLACK
2	OUTPUT BUSBAR M5-M8	COPPER ALLOY TIN PLATED
3	OUTPUT BUSBAR M5-M10	COPPER ALLOY TIN PLATED
4	MAIN BUSBAR	COPPER ALLOY TIN PLATED
5	SQUARED HEAD M10x23 SCREW	STAINLESS STEEL AISI 304
6	HEXAGONAL HEAD M8x20 SCREW	STAINLESS STEEL AISI 304
7	SQUARED HEAD M5x18 SCREW	STEEL ZnNi
8	SECONDARY MAIN BUSBAR	COPPER ALLOY TIN PLATED
8A	M5 SCREW	STEEL ZnNi
9	LATCHES	PBT HB YELLOW
10	BREATHABLE VALVE	-
11	TETHER	HB RUBBER BLACK
12	MIDIVAL (SEE VARIANT TABLE)	-
13	M5 NUT	STEEL ZnNi
14	UNDERHOOD PDM PCB	-
14A	MALE PIN 630	COPPER ALLOY TIN PLATED
14B	MALE PIN 280	COPPER ALLOY TIN PLATED
14C	FORK CONTACT	COPPER ALLOY TIN PLATED
15	M5 SQUARED PLATE	STEEL ZnNi
16	AFIL TCX INOX ST2.9x8.5 SCREW	STAINLESS STEEL AISI 304
17	TOP BODY	PA66-GF25 V2 BLACK
18	MINI FUSE (SEE VARIANT TABLE)	-
19	MCOMPACT FUSE (SEE VARIANT TABLE)	-
20	FUSE HOLDER COVER	PA66-GF25 V2 BLACK
21	GASKET	HB SYLICON YELLOW
22	ADHESIVE IDENTIFICATION LABEL	PET
23	TRACEABILITY LABEL	PET
24	FUSE PULLER	PP HB YELLOW COLOR

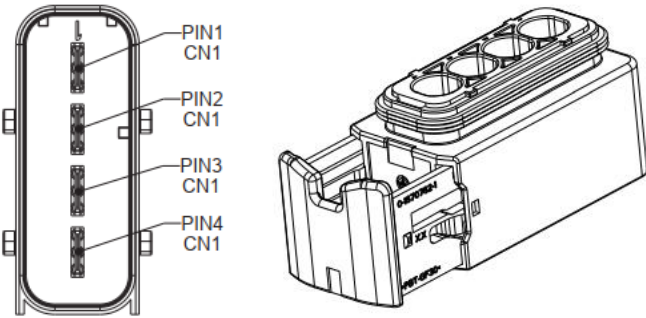
# MEC 25- ELECTRICAL SCHEME



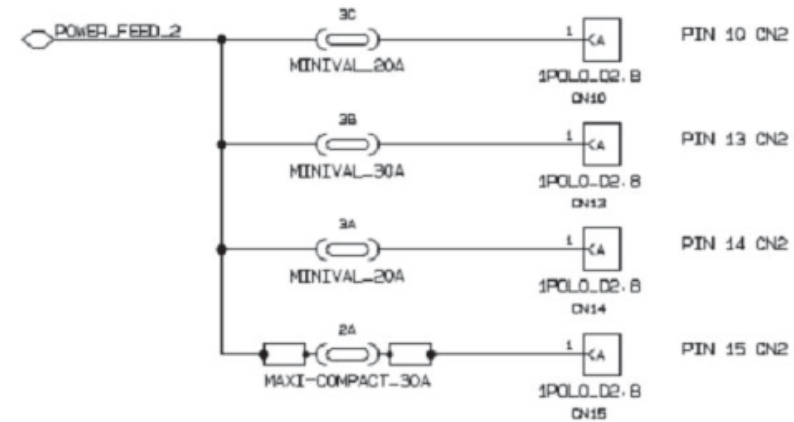
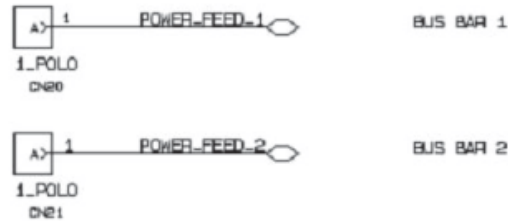
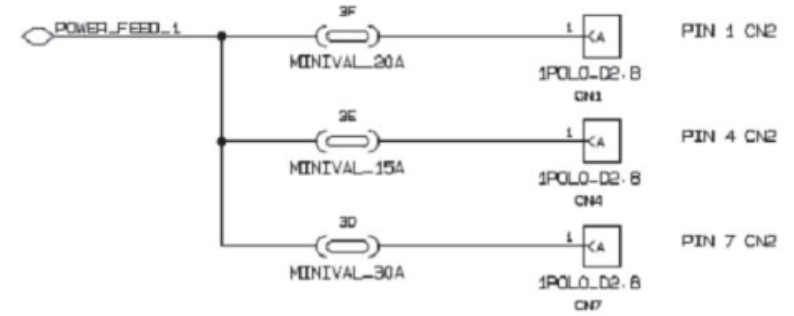
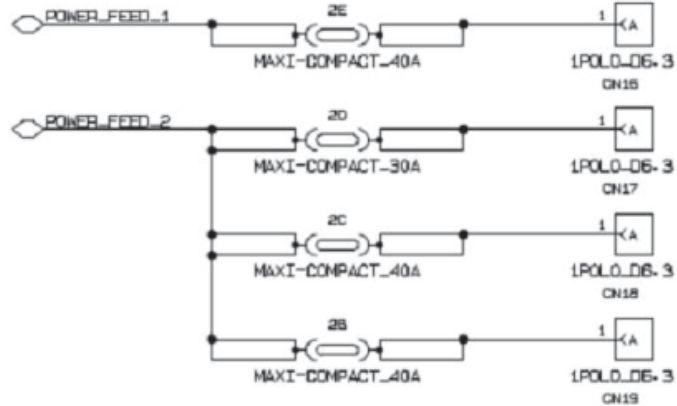
# MEC 25- CONNECTORS PIN OUT



TYCO CONNECTOR 1-534126



TYCO CONNECTOR 1-564330



# MEC 25– TECHNICAL FEATURES

- MAX VOLTAGE : 32V
- MIN/MAX TEMPERATURE : -40/125°
- FLAMABILITY: UL94 V2 FOR BODY AND COVER – HB FOR OTHER COMPONENTS
- IP PROTECTION: IP69K
- BREATHABLE VALVE PRESSURE RELIEF MECHANISM
- POSSIBILITY TO HAVE DIFFERENT COMBINATIONS OF FUSES
- M8 MEGAFUSE TIGHTENING TORQUE 15 Nm  $\pm 1,5$  Nm
- M10 FEEDING POINT TIGHTENING TORQUE 28,5 Nm  $\pm 1,5$  Nm
- M10 CHASSIS FIXING POINT TIGHTENING TORQUE 28,5 Nm  $\pm 1,5$  Nm
- POSSIBILITY TO FIX THE DEVICE IN DIFFERENT POSITIONS (FLAT, INCLINED OR VERTICAL)
- POWER FEED CABLE : 4/0 SGX OR SGR
- INDICATIVE WEIGHT: 610 gr
- COVER ALWAYS LINKED TO THE BODY BY A TETHER IN ORDER TO AVOID POSSIBLE LOOSING OF COVER
- COVER FIXING SYSTEM WITH POSITIVE TOUCH
- SEALED SEPARATED FUSE COMPARTMENTS TO PROTECT THE FUSES AND THEIR TERMINATIONS FROM HARSH ENVIRONMENTS. THIS ALLOWS FOR PERMANENT CABLE CONNECTIONS THAT CAN BE DIELECTRICALLY SPRAYED WITHOUT AFFECTING THE FUSE
- OVER MOLDED BODY THAT INCLUDE BUSBAR AND SCREWS FOR INPUT/OUTPUT WIRE HARNESS WITH HIGH TORQUE CAPABILITY
- DESIGNED TO MINIMIZE BRIDGING CORROSION BETWEEN POSITIVE LIVE METAL SURFACES AND POTENTIALLY GROUNDED ASSEMBLY HARDWARE OR MOUNTING SURFACES
- OPTIONAL UN-FUSED EXIT THAT COULD PROVIDE POWER DISTRIBUTION TO CIRCUITS WHICH CANNOT BE FUSED.

# THANK YOU

for your attention

## **DISCLAIMER: Notice to Receiver**

Products, information, drawings, specifications and reference numbers (hereafter “contents”) discussed herein are for reference purposes only.

All contents herein are provided on an “as is” basis, without warranties of any kind. The contents discussed herein remain the sole and exclusive property of MTA S.p.A. and shall not be copied, translated in whole or in part without MTA S.p.A. prior written consent.

No license of any patent, copyright, mask work, trademark or any other intellectual property right is granted under this document, by implication, estoppel or otherwise. Contents may be modified and changed by MTA S.p.A. without any notice.

For updates or additional information about MTA products, please contact your nearest MTA office.

All brand names, trademarks and registered trademarks belong to their respective owners.



[www.mta.it](http://www.mta.it)

[info@mta.it](mailto:info@mta.it)

FOLLOW US:

