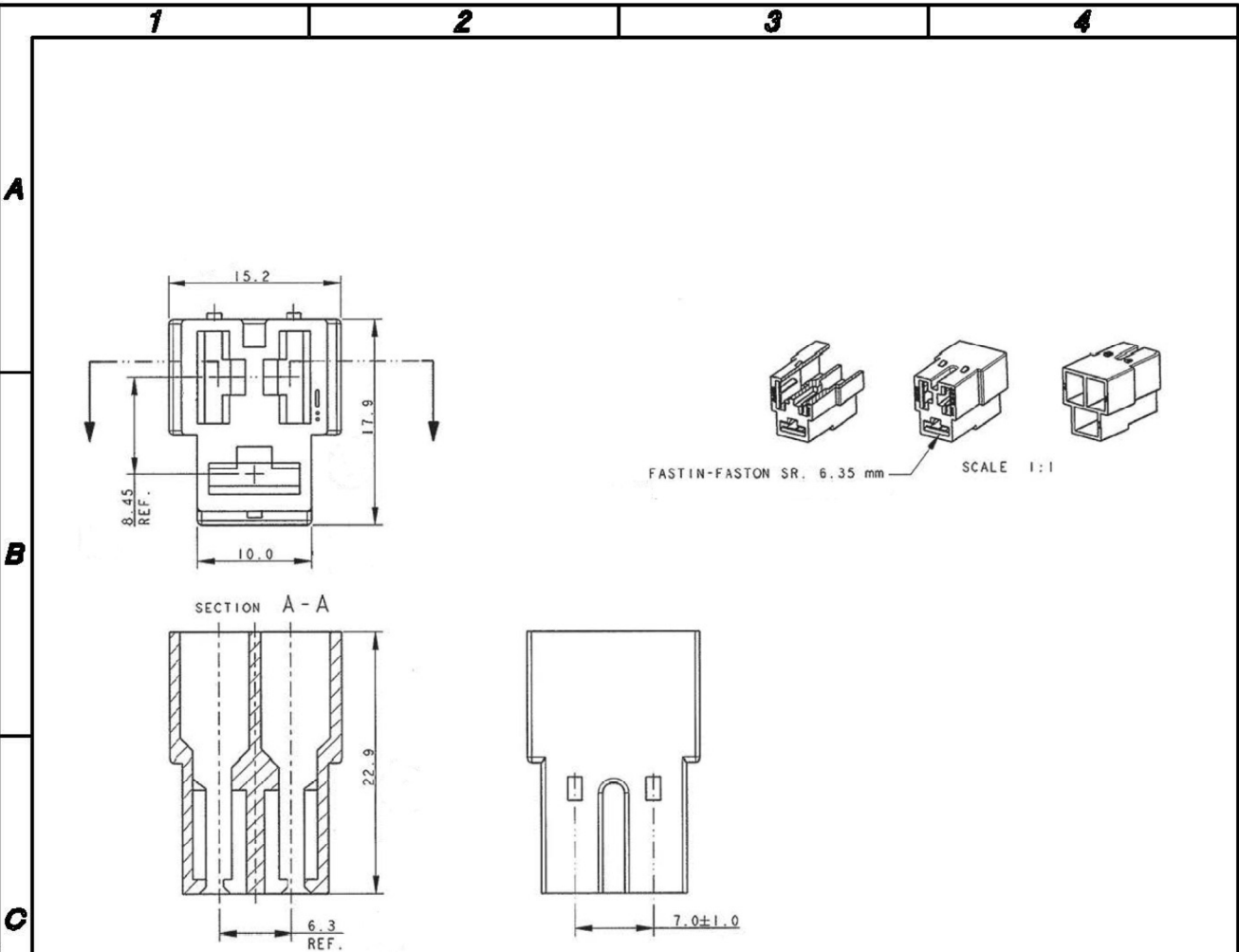


All proprietary rights reserved by MECCANOTECNICA COGNONESE S.p.A. - This drawing shall not be reproduced, or in any way utilized, for the manufacture of the component or unit herein illustrated and must not be released to other parties, without written consent. Any infringement will be legally pursued.



**ONLY FOR REFERENCE**

| OPERATING FEATURES     |         |            |
|------------------------|---------|------------|
| FEATURE                | UNIT    | VALUE      |
| <i>V max</i>           | V       | 32         |
| <i>T. min - T. max</i> | °C      | -30 / +100 |
| <i>IP</i>              | IEC 529 | 23         |

|                                     |                     |                             |           |                       |              |                      |      |            |       |
|-------------------------------------|---------------------|-----------------------------|-----------|-----------------------|--------------|----------------------|------|------------|-------|
| <b>MTA</b><br>auto electric systems |                     | MTA P/N 4410220 / 4510220   |           | Denom. FASTON CONN 3F |              |                      |      |            |       |
|                                     |                     | Draw No. <b>B0-002.023A</b> |           | Used for              |              |                      |      |            |       |
| Rel. Level APPROVED                 |                     | Draw for CLIENT             |           | Family CONNECTOR      |              | MULTIWAY             |      |            |       |
| Date                                | Name                | Scale                       | Weight(g) | Lin.Tol.*             | Ang.Tol.*    | Material SEE DRAWING |      | Thick.     | Width |
| Draft.                              | 04/11/1989          | M.CORBANI                   |           | 0.5                   |              | Coating              |      |            |       |
| Chk.                                | 04/11/1989          | M.CORBANI                   |           |                       |              |                      |      |            |       |
| PQApp.                              | 30/11/2004          | R.GONZALEZ                  | <b>A4</b> | Dimensions in mm      | Sheet<br>1/1 | Color NEUTRAL        |      |            |       |
| App.                                | 30/11/2004          | M.CORBANI                   |           |                       |              |                      |      |            |       |
| 4                                   |                     | OPERATING FEATURES UPDATED  |           |                       |              |                      |      |            |       |
| No.                                 | Reason for Revision |                             |           |                       | Date         | 20/10/2004           | Name | A. CAPELLI |       |