

# INSTALLATION GUIDE



## Toyota Hilux Vigo 2005 on - 3.0L Diesel

**SN59-3367**



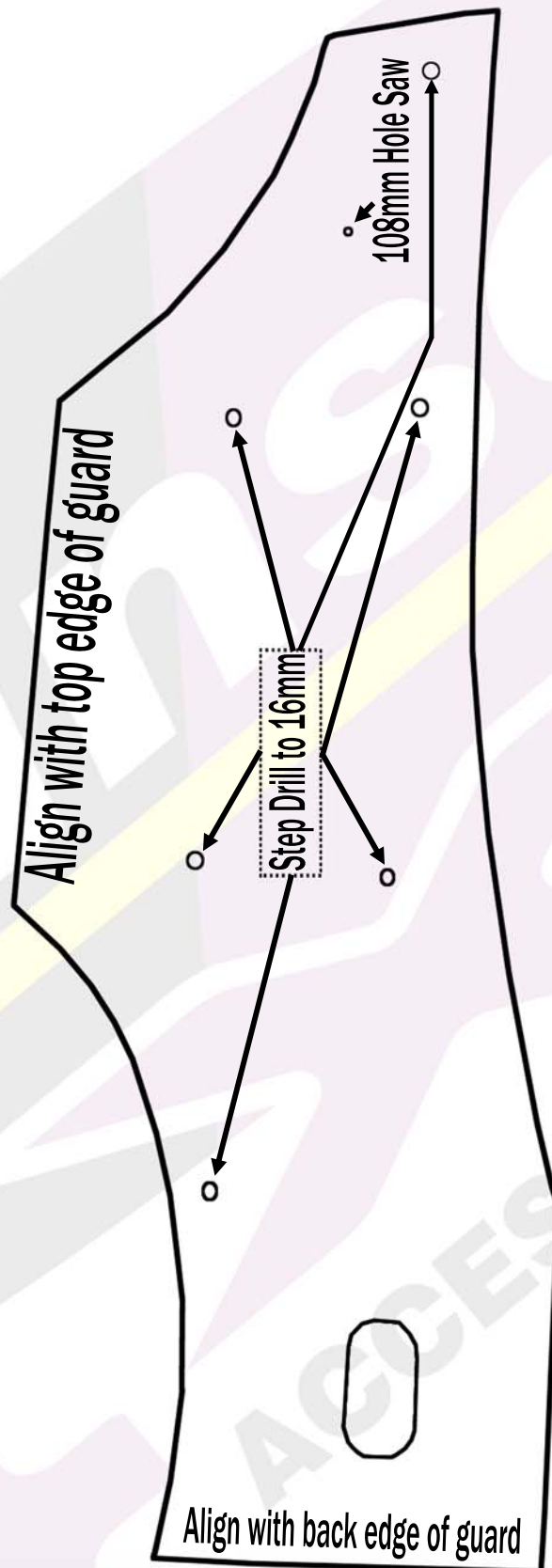
This Snorkel will take approximately 2 hours to install and is installed to the Right Hand Side of the vehicle.

Tools required are:

- 108mm hole saw
- Step Drill, drill bits and drill
- Masking Tape
- Sensor safe Sealant (Sikaflex 227 Recommended)
- Touch up Paint and small brush or cotton bud
- Allen keys & Spanners
- Pop rivet gun
- Small Square file
- Screw Drivers
- Centre Punch and Hammer

Dobinsons 4x4 Snorkels should only be installed by a qualified technician. It is the installer's responsibility to ensure all bare metal is suitably rust proofed and all connections are water tight and sealed only with a "SENSOR SAFE" type sealant (Sikaflex 227 Recommended). Fully read and understand the instructions before beginning the installation.

# TEMPLATE OUTLAY



# Fitting Guide

1. Remove the RH mud flap and RH plastic inner wheel arch guard.



2. Remove the air box.
3. Remove the air-box intake duct, there is a 10mm bolt towards the rear inside the wheel arch.



4. Apply masking tape to the RH quarter panel, it is a good idea to cover the whole panel so you do not scratch it when working around it.



5. Check the template against the snorkel body. Align the template on the vehicle as seen in picture on page 2, and tape it down and double check again.
6. Once you are happy with the alignment of the template centre punch the 7 holes.
7. Drill the 7 holes with a small pilot drill, then remove template.
8. Using the step drill, drill the 6 stud holes

- out to 16mm to clear the studs. Using a 108mm hole saw on low speed drill the 1 hole to clear the snorkel body.
9. Remove the burrs from all holes with file or deburrer.
10. Fit the upper snorkel body mount to the snorkel with the bolts supplied. Do not over tighten.
11. Fit the 6 studs to the snorkel body with thread lock and tighten with Allen key, DO NOT over-tighten.
12. Put some masking tape on the A-Pillar approximately where the upper bracket will mount.
13. Test fit the snorkel body carefully and mark the top Mounting bracket holes. Open the door while you do this and ensure there is sufficient clearance.
14. Remove the snorkel and centre punch.
15. Pilot drill the holes, and then drill to suit the screws or rivets supplied. It is a good idea when doing this to drill through a block of wood or equivalent spacer so that only about 5mm of the drill tip sticks out to prevent drilling through the interior or air bags.

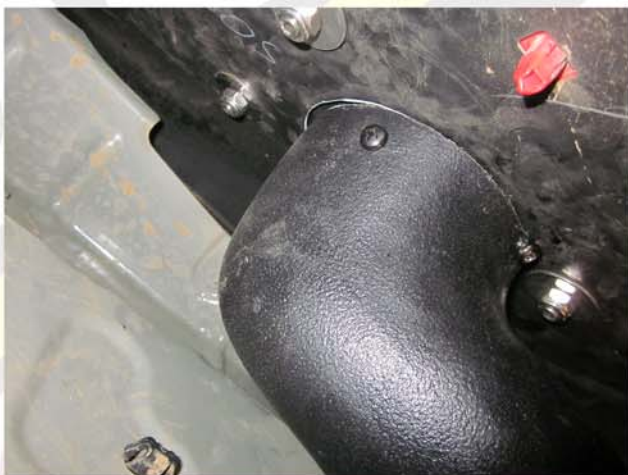


16. Remove the burrs from these holes, remove masking tape, paint all bare metal surfaces including the holes drilled in the quarter panel, and remove all metal fillings from the A-Pillar and quarter panel.
17. Screw or rivet the mounting bracket to the vehicle.

18. Test fit the inner guard duct to the snorkel body outlet and air box.
19. Remove the foam from the external part of the air intake tube on the air box, and refit the air box.
20. Using gloves apply a decent bead of sealant to the inside of each end of the plastic elbow duct supplied and also apply a decent amount of sealant to the snorkel body outlet.
21. Fit the elbow duct into position in the guard aligning the inlet side with the hole for the snorkel body outlet and sliding the other (smaller) end onto the air box intake.



22. Carefully fit the snorkel body to the quarter panel aligning the snorkel body outlet to the elbow duct.
23. Ensure the edge of the elbow duct is hard up against the snorkel body as far as it will go and install a screw through both.



24. Tighten the hose clamp on the other end of the duct.

25. On each stud put a large flat washer supplied and a nyloc nut and do up finger tight.
26. Using the bolts supplied bolt the snorkel to the upper snorkel bracket and tighten. DO NOT OVER TIGHTEN.
27. Tighten the nyloc nuts on the stud.
28. Refit the inner wheel arch guard.
29. Install a screw through the airbox and elbow duct to lock together.



30. Fit your Dobinsons 4x4 Ram head to the top of the snorkel with the black hose clamp supplied.



## HEAVY DUTY RAISED SUSPENSION KITS

## ROOF RACKS & ROOF TOP TENT RACKS



## WINCH & AIRBAG COMPATIBLE STEEL BULLBARS



## ROOF TOP TENTS RECOVERY GEAR AND MUCH MORE

