

INSTALLATION GUIDE



Isuzu Dmax 07/08 - 05/12

Holden Rodeo RX,LX,LT 01/07 - 08 excludes single cab

SN21-3383



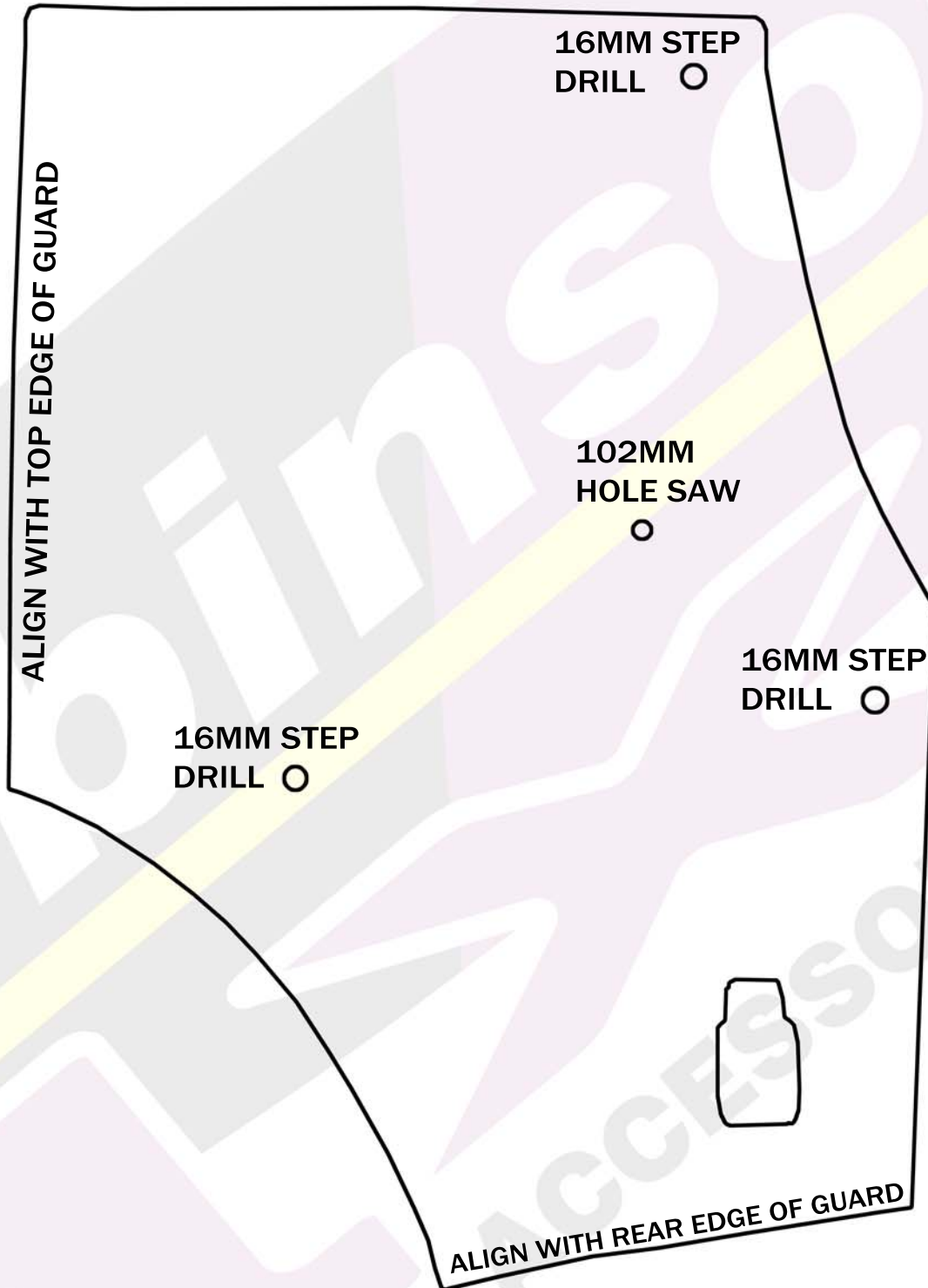
This Snorkel will take approximately 2.5 hours to install and is installed to the Right Hand Side of the vehicle.

Tools required are:

- 102mm hole saw
- Step Drill, drill bits and drill
- Masking Tape
- Sensor safe Sealant (Sikaflex 227 Recommended)
- Touch up Paint and small brush or cotton bud
- Allen keys & Spanners
- Pop rivet gun
- Small Square file
- Screw Drivers
- Centre Punch and Hammer
- Angle grinder

Dobinsons 4x4 Snorkels should only be installed by a qualified technician. It is the installer's responsibility to ensure all bare metal is suitably rust proofed and all connections are water tight and sealed only with a "SENSOR SAFE" type sealant (Sikaflex 227 Recommended). Fully read and understand the instructions before beginning the installation.

TEMPLATE OUTLAY



Fitting Guide

1. Remove the RH plastic inner wheel arch guard. Removing the RH wheel may also make this install easier.

2. Remove the air-box and air-box intake duct.



3. Apply masking tape to the RH quarter panel, it is a good idea to cover the whole panel so you do not scratch it when working around it. Carefully unclip the side indicator.



4. Check the template against the snorkel body. Align the template on the vehicle as seen in picture on page 2, and tape it down and double check again.

5. Once you are happy with the alignment of the template centre punch the 4 holes.



6. Drill the 4 holes with a small pilot drill, then remove template

7. Using the step drill, drill the 3 stud holes out to 16mm to clear the studs, take care on the top hole as the inner guard is not far below the outer. Using a 102mm hole saw on low speed drill the 1 hole to clear the snorkel body.

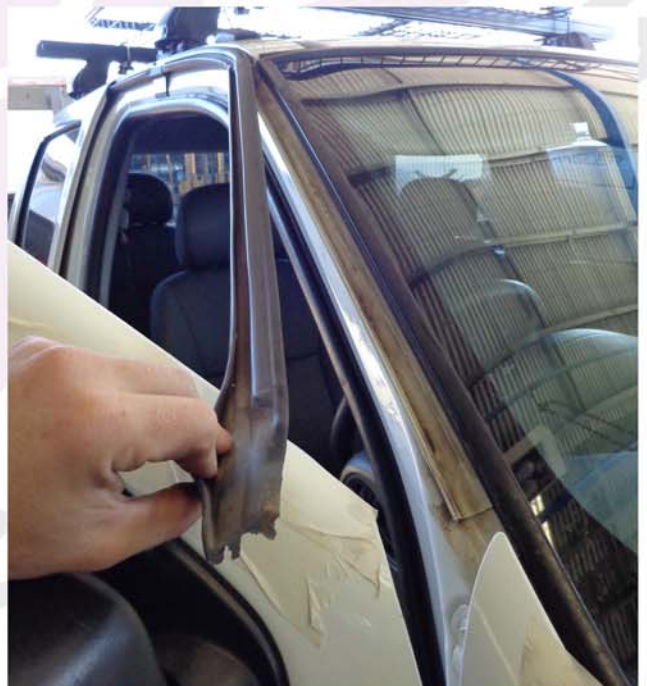


8. Remove the burrs from all holes with file or deburrer.

9. Fit the upper snorkel body mount to the snorkel with the bolts supplied. Do not over tighten

10. Fit the 3 studs to the snorkel body with thread lock and tighten with Allen key, DO NOT over-tighten.

11. Carefully pull back the A-pillar door weather seal.



Fitting Guide

12. Put some masking tape on the A-Pillar approximately where the upper bracket will mount.

13. Test fit the snorkel body carefully and mark the top Mounting bracket holes. The inner edge of the mounting bracket should sit up against the plastic windscreen trim. Mark the position of the brackets.



14. Remove the snorkel and remove the top mounting bracket from the snorkel body. Place the bracket back into its marked position and mark the holes.

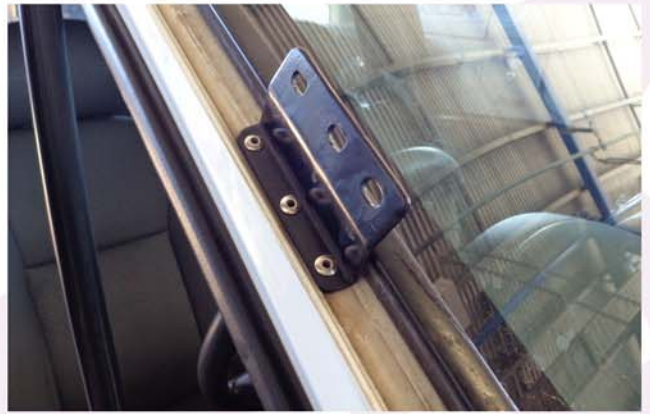
15. Centre punch the holes.

16. Pilot drill the holes, and then drill to suit the rivets supplied. It is a good idea when doing this to drill through a block of wood or equivalent spacer so that only about 5mm of the drill tip sticks out so you do not drill through your interior or air bags.



17. Remove the burrs from these holes, remove masking tape, paint all bare metal surfaces including the holes drilled in the quarter panel, and remove all metal fillings from the A-Pillar and quarter panel.

18. Rivet the mounting bracket to the a-pillar.



19. Install the rubber channel strip to the intake duct hole in the engine bay.



20. Check the inner guard duct large end fits over the snorkel body outlet, you may have to put a small bevel on both pieces to get them to join properly.



21. Install the inner guard duct supplied into position inside the guard. This can be quite a tight fit. Install the engine bay end first, this is easiest done by having the other end of the duct towards the ground and slightly towards the centre of the vehicle, it can then be rotated until the end of the duct goes through the hole into the engine bay. The other end can then be rotated up into position, aligning it with the guard hole.

Fitting Guide

22. Install the rubber joiner onto the inner guard duct from inside the engine bay and install a hose clamp on each.

23. Remove the drain hole from the air box and seal.



24. Remove the air intake duct and pre spinner.

25. Re-install the air box positioning the rubber joiner over the air box intake.



26. Ensure the large end of the inner guard duct is aligned with the 102mm hole in the guard and tighten both hose clamps on the rubber joiner.

27. Apply a thick bead of sensor safe sealant to the inside of the large end of the inner guard duct and install the snorkel body carefully, aligning the snorkel body outlet with the inner guard.

28. On each stud put a large flat washer supplied and a nyloc nut and do up finger tight. For the hard to reach top nut, the washer can be glued to the nut use a small amount of super glue or similar.

29. Bolt the top of the snorkel to the upper snorkel bracket.

Tighten the nyloc nuts on the studs, and tighten the upper mounting bolts.

30. Ensure the edge of the elbow duct is hard up against the snorkel body as far as it will go and install a screw through both.



31. Tighten the hose clamp on the other end of the duct.

32. Refit the inner wheel arch guard and airbox fliter and lid.

33. Re-fit the door weather seal.

34. Re-fit and tighten any other items removed during installation.

35. Fit you Dobinsons 4x4 Ram head to the top of the snorkel with the black hose clamp supplied.



HEAVY DUTY RAISED SUSPENSION KITS

ROOF RACKS & ROOF TOP TENT RACKS



WINCH & AIRBAG COMPATIBLE STEEL BULLBARS



ROOF TOP TENTS RECOVERY GEAR AND MUCH MORE

