

Bullbar Installation Guide
Part Number: BU59-5559
Fits: Toyota Tacoma 2016+



This Bull Bar will take approximately 6-8 hours to install

Dobinsons BULLBARS should be installed by a qualified installer and it is the installers responsibility to ensure correct fitment. Dobinsons is not responsible for any damage incurred to the vehicle during installation.

Tools Required

- Spanners and Socket Set**
- Allen / Torx Key Set**
- Screw Drivers**
- Drill with Assorted Drill Bits**
- Clip Removal Tool**
- Torque Wrench**
- Rubber Mallet / Deadblow Mallet**
- JigSaw or other plastic cutting tool**
- Masking Tape**
- Black Paint**

Remove OEM Bumper

1. If installed remove the front license plate and the license plate bracket.

2. Remove the OEM Grill, Remove two top Bolts and pop clips on each side near the head lights. (If your vehicle is equipped with TSS, remember to unplug before proceeding). The grill should now be free to come off with a firm tug on each side. **(P1.1) & (P1.2)**

3. Remove the three pop clips along the top of the OEM Bumper and two pop clips under each headlight. (If fog lights are fitted, be sure to unclip them now) **(P1.3)**

4. Remove all of the pop clips and bolts on the bottom edge of the OEM Bumper.

5. Remove the front fender flare bolts and separate from OEM Bumper. **(P1.4)**

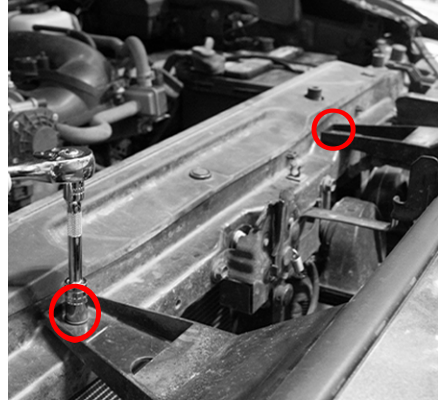
6. Pull the OEM bumper ends out and away from the vehicle. **(P1.5)**

7. Remove OEM crash bar nuts. (Three on each side) Set aside as this will not be reused. **(P1.5)**

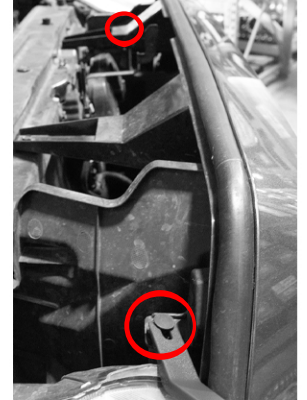
8. Remove lower front cross member extensions on both sides. **(P1.6)**

9. Remove plastic frame plugs above the sway bar on the inside and outside of the frame, on both sides of the vehicle.

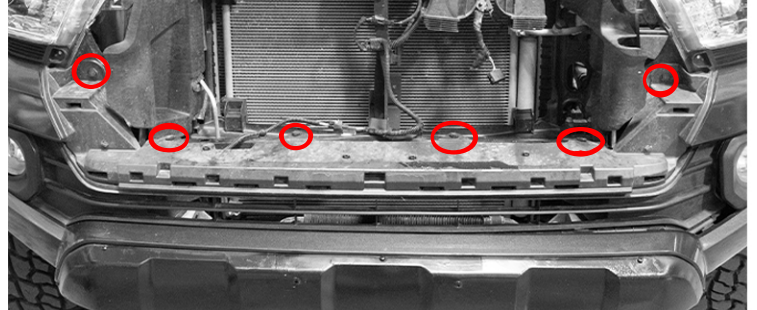
(P1.1)



(P1.2)



(P1.3)



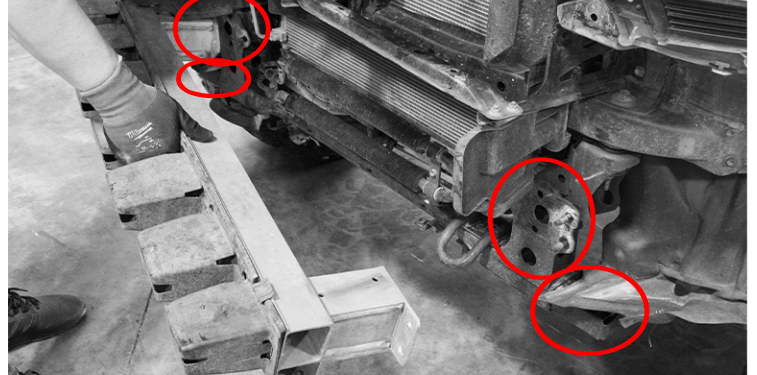
(P1.4)



(P1.5)



(P1.6)





Preparing for Bull Bar Install

11. If fog lamps are fitted to the bumper remove harness and set aside.

12. Mask the lower part of the grill, draw a line 18mm from the bottom lip and cut. this may need to be trimmed further depending on the winch installed. **(P2.1)**

13. Cut the corners off the OEM bumper as indicated in **(P2.2)**, Mask the ends and draw a line using the cut template. we recommend the initial cut to be done with a 10mm buffer to prevent excessive cutting of the OEM bumper. **(P2.3)**

14. Mark the fender flare flush to the OEM Fender and trim on both sides as shown on **(P2.4)**.

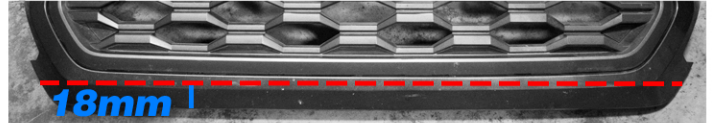
15-1. Re install the OEM Bumper. Using the OEM Bumper as a template, mark the plastic bumper retainer. **(P2.3)**

15-2. Remove the OEM Bumper and Retainer, Trim according to your marking.

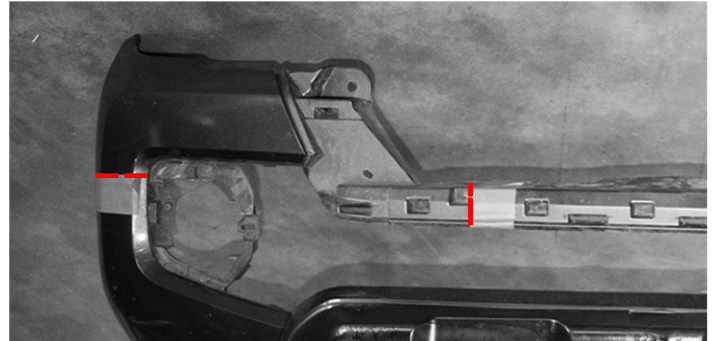
16. Remove the OEM bumper, deburr the edges with a file or sandpaper and apply edge trim.

OPTIONAL: Mask the area around the OEM Bumper retainers and paint black. (Highlighted area in **(P2.4)**).

(P2.1)



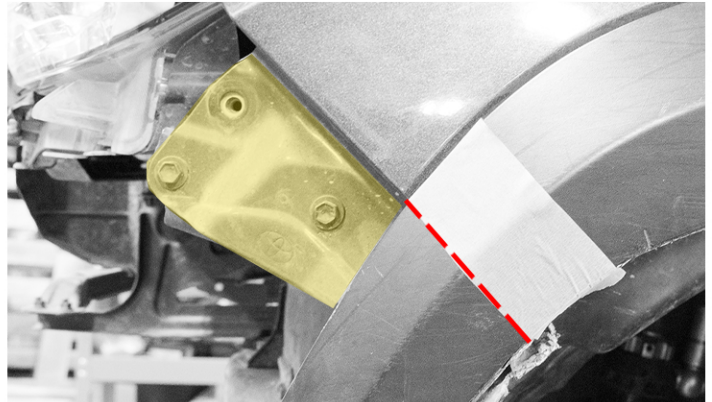
(P2.2)



(P2.3)



(P2.4)



Winch Cradle Installation

17. Loosely fasten the winch cradle mounts on each side using the OEM frame studs with OEM flange nuts.

(P3.1)

18. Fit the 3mm spacers between the brackets and the frame as shown in. Loosely fasten using M12x1.75 35mm bolts, flat washer and nut. **(P3.2)**

TIP: Insert the bolt about halfway, fasten the nut, then push the bolt all the way through.

19. Loosely fasten the support brackets using M10x1.25 50mm bolts, flat washer, silver spacer and nuts on the cradle side and the M12x1.75 75mm bolts, flat washer and nuts on the frame side. **(P3.3)**

20. Mount the winch plate to the cradle brackets using M12x1.75 35m bolts, flat washers and nuts. **(P3.4) If mounting a winch, do so now.**

21. With the winch cradle assembly hand tightened, center it to the vehicle.

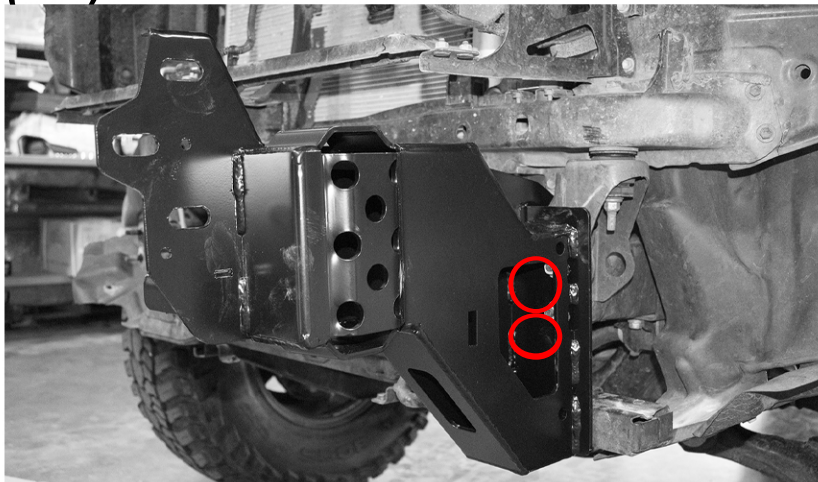
22. Torque all winch cradle Bolts.

M10 - 44Nm / 32.5ft/lb

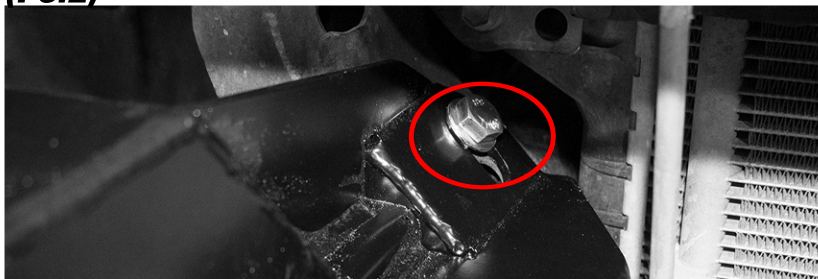
M12 - 77Nm / 56.8ft/lb

Note: If the winch cradle is not centered properly, these may need to be loosened and re-adjusted

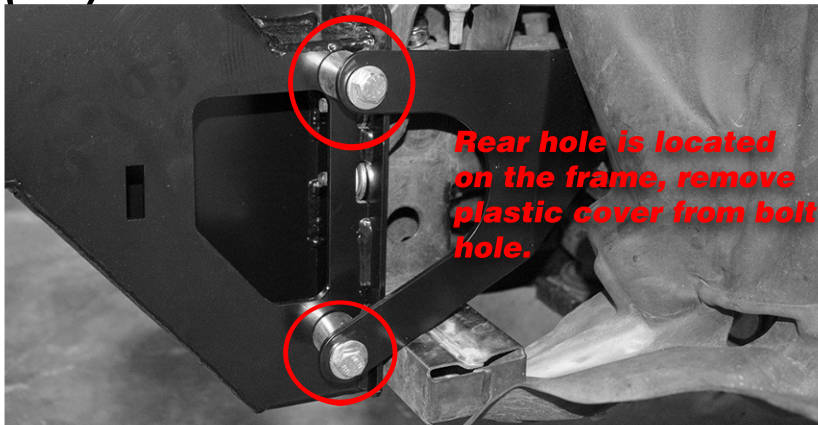
(P3.1)



(P3.2)



(P3.3)



(P3.4)



Bull Bar Installation

23. If your tacoma is equipped with TSS (Toyota Safety Sense), Remove the sensor from the OEM grill and re-locate to the front of the bumper above the fairlead mount. **(P4.1)**

24. With the help of a mate, carefully lift the bull bar onto the winch cradle, fasten loosely using three M12x1.75 35mm bolts, flat washers and nuts on each side, **DO NOT TORQUE YET.**

25. With the help of a mate, adjust the bull bar leaving an 8-10 mm gap to the fender flares and the OEM bumper. **(P4.2)**

26. Check that the bull bar is centered to the vehicle, if not. Repeat steps 21-25 Once happy with the bull bar fitment, torque.

M12 - 77Nm / 56.8ft/lb

Bash Plate Installation

28. Insert 3 cage nuts to the lower-middle part of the Bull Bar. Fasten the front of the central bash guard to the Bull Bar. **(P4.3)**

30. Fasten the rear part of the central bash plate to the sides of the winch cradle with a bolt, nut and washers. (This is height adjustable to suit your specific skid plate). **(P4.3)**

31. Insert 5 cage nuts to the lower part on each side of the bumper. Fasten the side bash plates to the bull bar. **(P4.4)**

33. Fasten the rear part of the side bash plates to the sides of the winch cradle with a bolt, nut and washers. (P4.3) **(P4.4)**

34. Torque all bash plate bolts.
Torque bash plate bolts to 22Nm / 16.25ft/lb

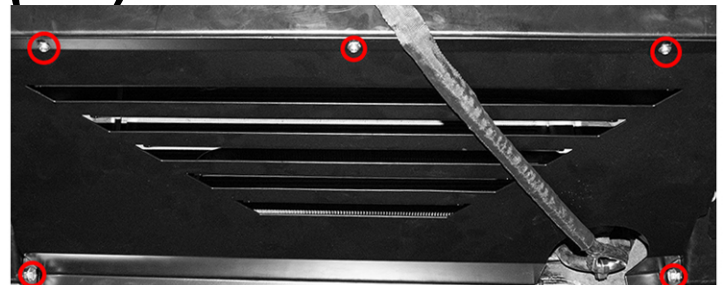
(P4.1)



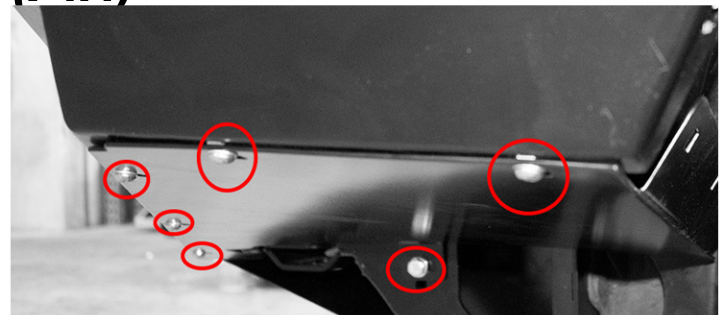
(P4.2)



(P4.3)



(P4.4)



Wiring Guidelines – Zenith Bullbars

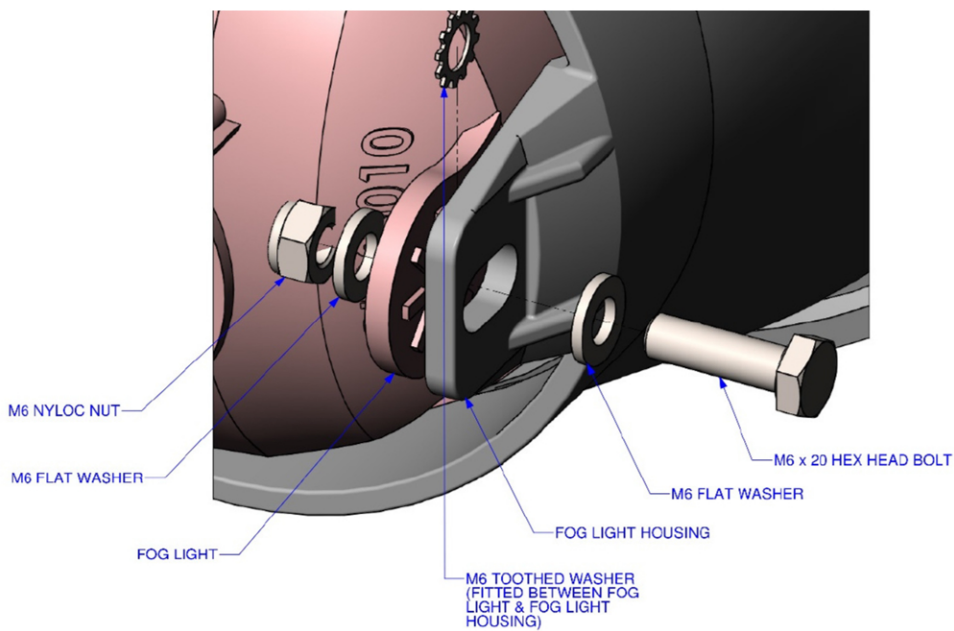
Dobinsons Zenith Bullbars are supplied with LED indicator/Parker lights. Available extra are DRL's and Fog Lights.

Indicator/Parker Lights

Use a multimeter to locate the existing positive and negative lights for the existing vehicle headlights park light circuit and indicator circuit and using the scotch-locks or soldering, connecting directly to the existing vehicle wiring circuit using the diagram on the following page. **NOTE:** For some later model Toyota 150 prado vehicles the Parker lights must be wired using a relayed wiring loom (a modified spotlight/foglight loom or similar) as the vehicle headlight wiring will not work – see the specific instructions with the bulbar for more information on these.

Fog lights (optional extra)

Install the fog lights into the bulbar before installing the bulbar. Use a sharp knife and from the back side of the bar carefully cut the retaining tabs on the plastic cover insert and remove. Install the fog light with the breather at the top. Use the 6mm bolt and washer, then place the tooth washer between the light insert mount and light, then the flat washer and nyloc nut as seen on the diagram below.



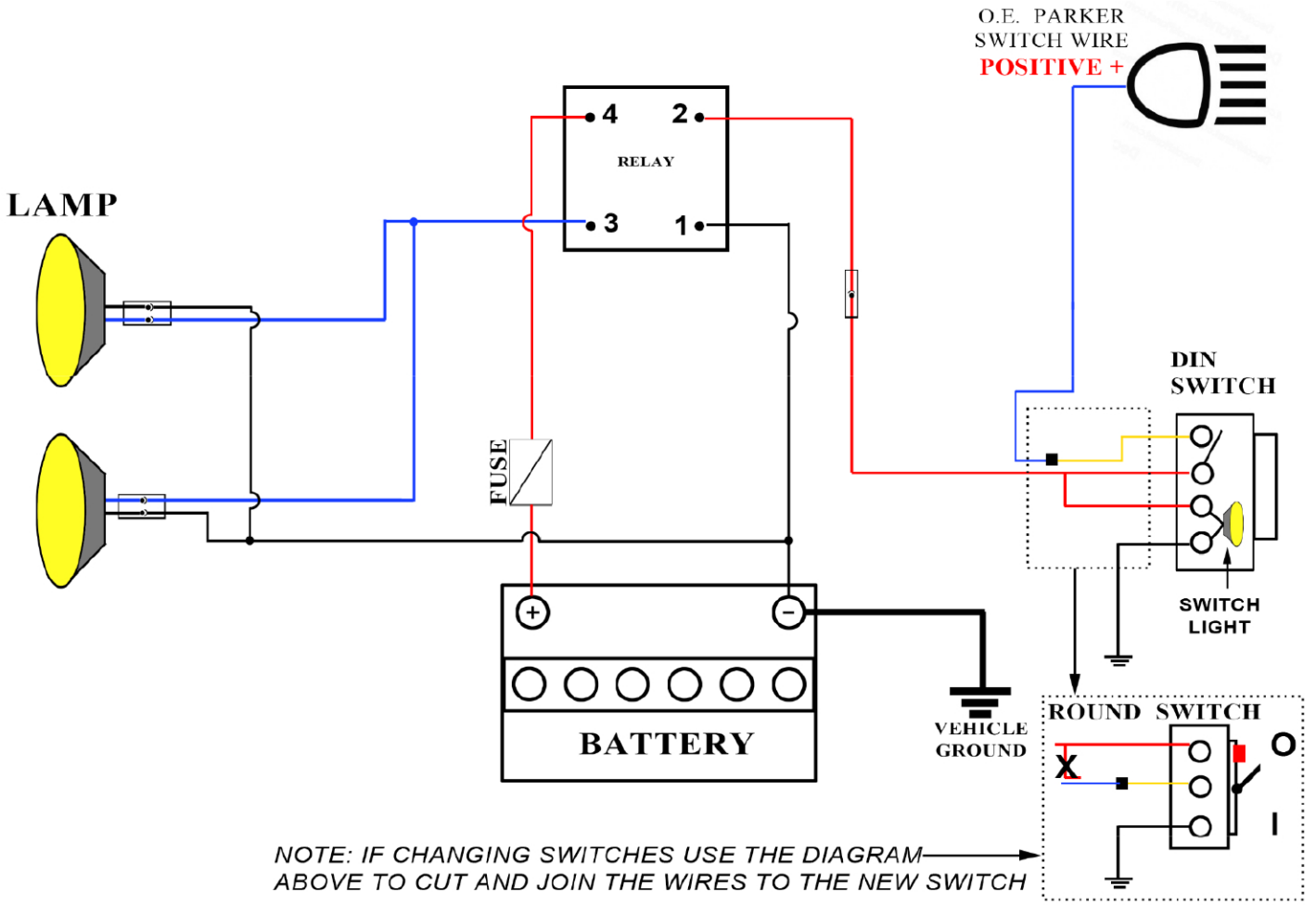
Wire the fog lights as per the diagram on the following page. There are 2 switches provided – a prewired universal single large din switch and a small universal switch. Dobinsons have some other plug and play switches available that are vehicle specific. Ashdown Ingram and similar electric wholesalers also have these switches – Check the wiring diagrams on the packet of the switch first to ensure they will plug in and work correctly or need wiring altered.

A round universal switch is also supplied – install the switch by drilling a xxmm hole and altering the wiring as shown.

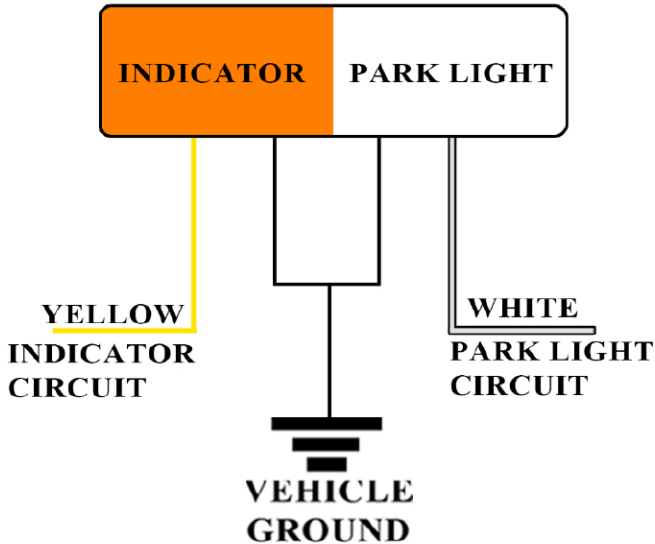
DRL Lights (optional extra)

Install the DRL lights into the bulbar before installing the bulbar. Use a sharp knife and from the back side of the bar carefully cut the retaining tabs on the plastic cover insert and remove. Attach with 2 x screws supplied (there are left and right sides). Wire the lights as per the diagram on the following Page – the switching wires can be wired to ignition for lights to operate when vehicle is running, or to parker / low beam for operation when the lights are turned on only. Use screws or good quality double sided tape (such as 3m brand) to fix the control box to the vehicle body.

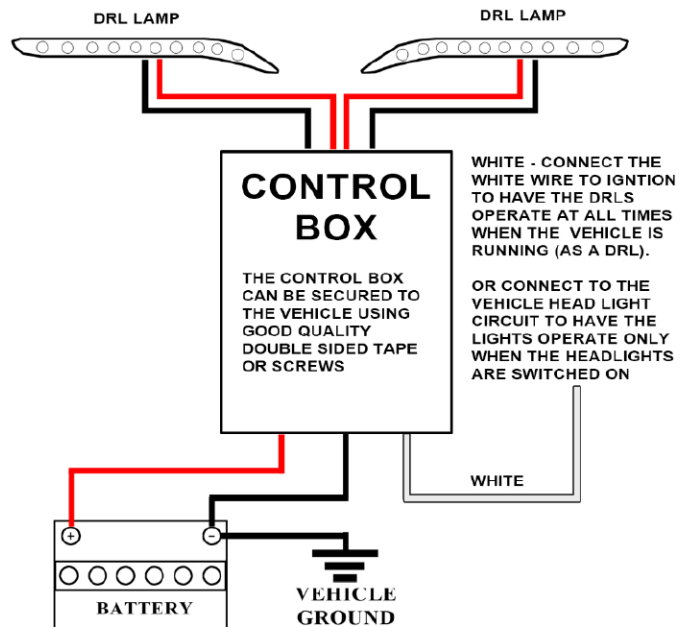
FOG LIGHT WIRING DIAGRAM - SERIES 2



INDICATOR / PARKER WIRING DIAGRAM - SERIES 2



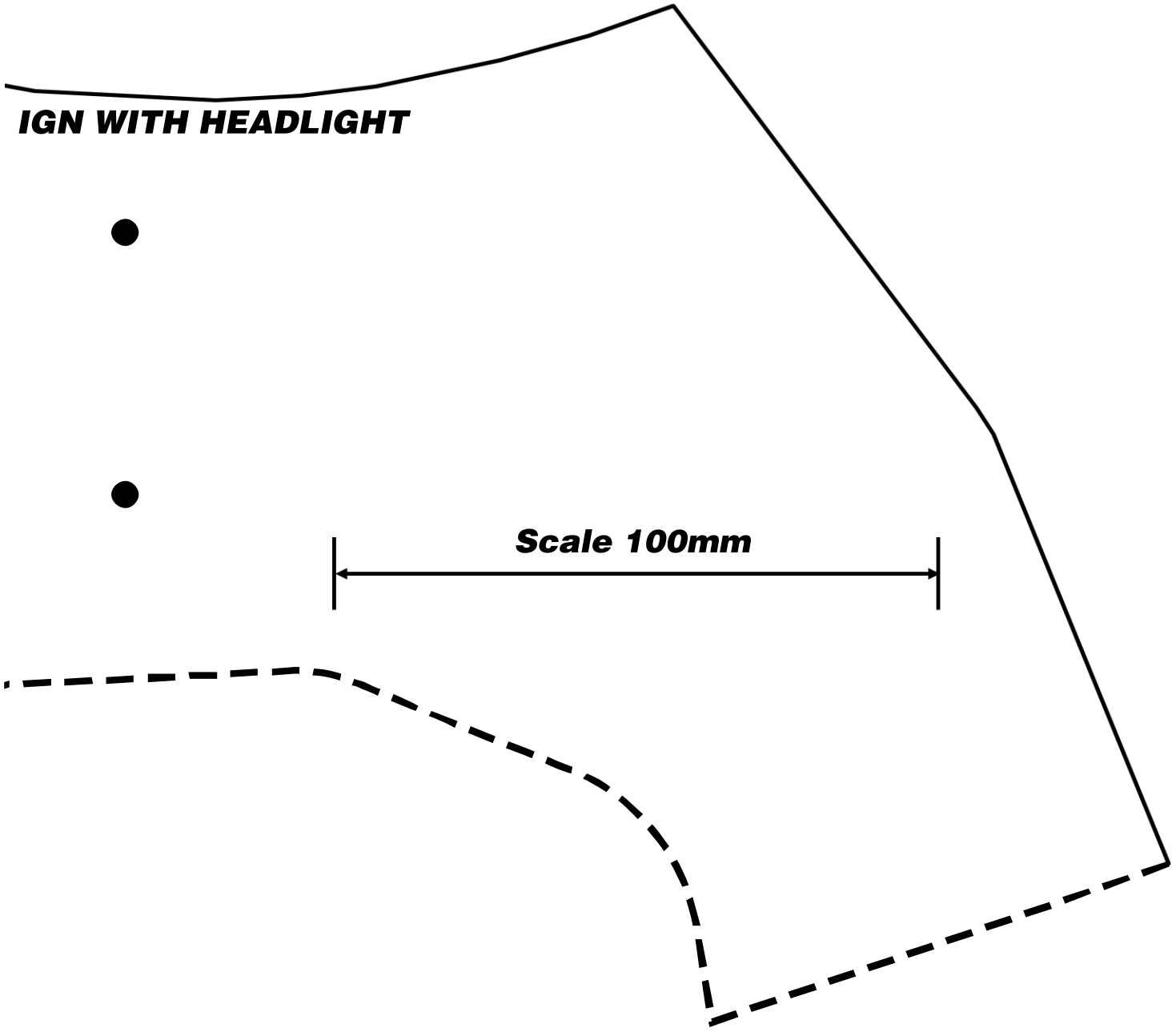
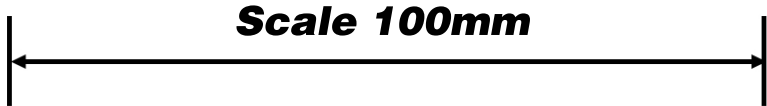
DAYTIME RUN LIGHT / DRL WIRING DIAGRAM - SERIES 2



Toyota Tacoma 2016+ Template - 1

If printing from PDF, Be sure to turn off scaling.
Confirm scale is correct before proceeding.

IGN WITH HEADLIGHT



Toyota Tacoma 2016+ Template - 2

If printing from PDF, Be sure to turn off scaling.
Confirm scale is correct before proceeding.

