

CASA
SLIM BOOKCASE
MODEL # 095600

IMPORTANT: RETAIN FOR FUTURE REFERENCE, READ CAREFULLY

SAFETY PRECAUTIONS

Read all instructions before use of the slim bookcase. Keep instructions for future use.

! WARNING !

BEFORE USE OF THE SLIM BOOKCASE READ AND UNDERSTAND THE INSTRUCTIONS.
ALWAYS USE ANTI-TIP STRAP THAT IS SUPPLIED WITH THIS PRODUCT TO PREVENT INJURY TO YOUR CHILD.
THIS FURNITURE ITEM CAN TIP WHEN THE ANTI-TIP STRAP IS NOT USED, ESPECIALLY WHEN PLACED ON CARPET, UNEVEN OR SLOPING FLOORING, OR WHEN SUBJECT TO EXTREME USE.
REMEMBER TO INSPECT YOUR SLIM BOOKCASE REGULARLY FOR WEAR OR ACCIDENTAL DAMAGE, AND FOR THE SECURITY OF COMPONENTS.
KEEP INSTRUCTIONS IN A SAFE PLACE FOR FUTURE REFERENCE.

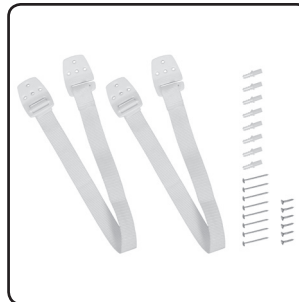
Check what you have received...

You have received 1 box. Please check the contents of the box against the list below. If anything is missing, please contact Customer Service. In Australia, contact CNP Brands on 1300 667 137, in New Zealand contact Wainhouse Distribution on 0800 567 5000.

Supplied loose in box:



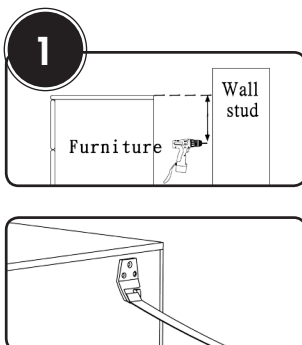
Casa Slim Bookcase
095597
(Pre-assembled)



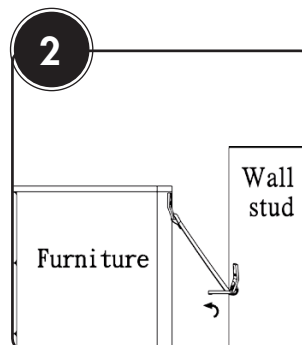
- Anti-Tip Wall Strap Kit**
- Wall Strap x 2
 - 32 mm Wall Mounting Plugs x 8
 - 25 mm Screw x 8
 - 19 mm Screw x 6

ANTI-TIP FURNITURE STRAP INSTALLATION

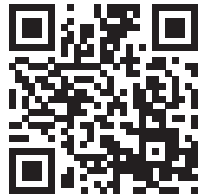
A minimum of two straps are used for each furniture piece using two screws per bracket. Brackets must be fixed to wall studs.



- 1a. Locate and mark wall studs behind furniture and corresponding position on the furniture surface.
- 1b. Position wall brackets (screw holes facing down) on the wall stud about 150 mm below furniture top then mark and drill pilot holes into wall surface.
- 1c. Screw wall brackets into wall studs using 32 mm wall mounting plugs and 25 mm screws.



- 2a. 3 pilot holes on each end of the product are already pre-drilled.
- 2b. Screw brackets into solid timber area of furniture using minimum of two 19 mm screws.
- 2c. Slide furniture back into position and pull the wall bracket straps until tight.



CASA
SLIM BOOKCASE
MODEL # 095600

IMPORTANT: RETAIN FOR FUTURE REFERENCE, READ CAREFULLY

ADDITIONAL FURNITURE RANGE



Casa Hook Wall Storage
095601



Casa Change Top
095596



Casa Toy Box with Seat
095597



Casa Dresser
095595



Casa 3 Drawer Chest
095599



Casa Modular Bookcase
095598



Casa Slim Bookcase
095600

For more information regarding our full range of coordinating Casa Cots and Change Tables, please visit the CNP Brands website at www.cnpbrands.com.au and click the bebe care brand link, or contact our Sales Department on **1300 667 137** to make your enquiry.

HOW TO CARE FOR YOUR BEBE CARE FURNITURE

Maintenance

Always check parts regularly for tightness of screws, nuts and other fasteners – tighten or replace if required. To maintain the safety of your slim bookcase, seek prompt repairs for bent, torn, worn or broken parts. Use only those parts and accessories approved by CNP Brands.

Distributed in Australia by CNP Brands
20 Calarco Drive,
Derrimut, VIC, 3030
Customer Service 1300 667 137
W: www.cnpbrands.com.au
E: info@cnpbrands.com.au
F: www.facebook.com/CNPBrands
I: @cnp_baby

Distributed in New Zealand by Wainhouse Distribution
2-6 Argyle St, Morningside,
PO Box 41-014,
St Lukes, Auckland, New Zealand
Customer Service: 0800 567 5000
E: helpline@wainhousedist.co.nz

