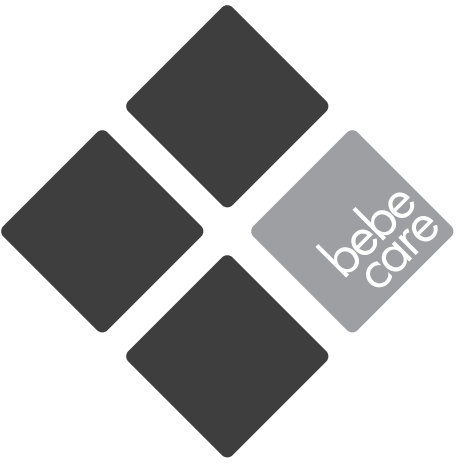


REGENCY

CHAIR AND ROCKER
MODEL # 094102-332



**IMPORTANT:
RETAIN FOR FUTURE REFERENCE,
READ CAREFULLY**

SAFETY PRECAUTIONS



Read all instructions before assembly and use of the chair and rocker. Keep instructions for future use.

WARNING

ADULT ASSEMBLY REQUIRED:

DUE TO THE PRESENCE OF SMALL PARTS DURING ASSEMBLY, KEEP OUT OF REACH OF CHILDREN UNTIL ASSEMBLY IS COMPLETE.

DO NOT SIT ON THE EDGE OF THE SEAT, ARMRESTS OR ON THE BACKREST AS THIS COULD CAUSE THE CHAIR TO TIP OVER.

DO NOT USE THE CHAIR AS A STEP STOOL.

DO NOT LEAVE CHILDREN UNATTENDED ON OR BESIDE THE CHAIR.



Congratulations on your purchase of the **Regency Chair & Rocker**.

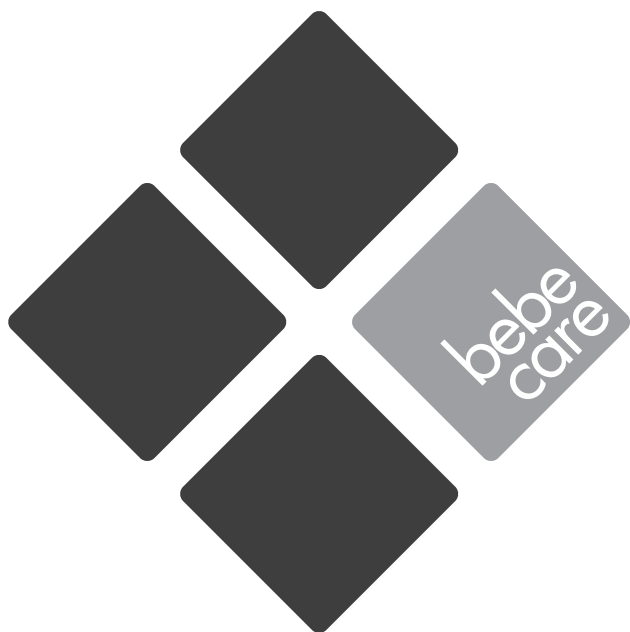
This product has been designed and developed with safety, comfort and functionality in mind. Please take the time to read this manual carefully before using this product and keep it in a safe place for future reference.

Contents

Assembly contents list

Assembly / Operating instructions

How to care for your **Regency Chair & Rocker**



Due to variations in the style and design of our products, the photographs and illustrations shown in this instruction manual are generic, therefore product fabrics, colour and design may vary from images shown. CNP Brands reserves the right to alter product specifications without notice as a result of our ongoing policy of product improvement.

ASSEMBLY CONTENTS

Check what you have received...

You have received **1 box**. Please check the contents of the box against the list below. If anything is missing, please contact Customer Service.

In Australia, contact **CNP Brands** on **1300 667 137**, in New Zealand contact **Wainhouse Distribution** on **0800 567 5000**.

Supplied loose in box:

Chair
(pre-assembled)



x 1

65mm Bolt
(for rocker)



x 8

Chair leg
(front)



x 2

25mm Bolt
(for legs)



x 8

Chair leg
(rear)



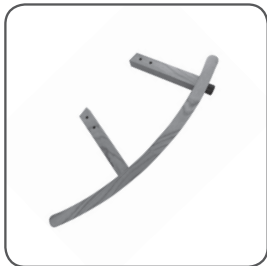
x 2

Washer



x 8

Rocker base



x 2

Allen key



x 1

There are no accessories recommended for us with this Bebe Care Regency Chair & Rocker.

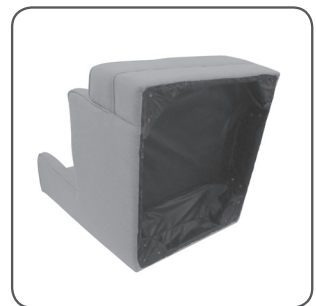


- a. As small parts are involved in assembly, children should be kept clear of the assembly area.
- b. Dispose of all packaging material immediately after the chair and rocker is assembled.
- c. Identify all parts and components.
- d. Two people are recommended for assembly of the chair.
- e. Spread a sheet on the floor during assembly time to protect the chair.

To assemble Chair in Rocking Mode...

1

- 1a. Turn chair onto its side so the back is parallel to the floor on a flat surface.
- 1b. Line up the pre-drilled holes on the rocker feet with the pre-drilled hole on the inside bottom base of the chair.



2

- 2a. Place a washer over the bolt 65mm and insert the into the hole.
- 2b. Repeat for remaining hole on rocker.
- 2c. Tighten bolt with supplied allen key. Be sure to not over tighten.
- 2d. Repeat with opposite side and use the remaining 2 x 65mm bolts.

WARNING! DO NOT over-tighten bolts.



Rocking mode is now ready for use.



To assemble in Chair Mode...

1

- 1a. Ensure that the legs marked with "front leg" are used at the front side of the chair.
- 1b. To determine the front and rear side, ensure that you are looking at the chair front on.
- 1c. This will ensure you have the correct front and rear sides.
- 1d. Turn the leg clockwise until it fits firmly against the base of the chair.



2

- 2a. Ensure that the leg sits square as per image.
- 2b. Insert 2 x 25mm bolts into the pre-drilled holes as per image.
- 2c. Tighten bolt with supplied allen key.
- 2d. Repeat steps 1a - 2c to assemble the 3 remaining feet.



WARNING! DO NOT over-tighten bolts.



Chair mode is now ready for use.



Cleaning

This product has been designed and developed with safety, comfort and functionality in mind. Please take the time to read this manual carefully before using this product and keep it in a safe place for future reference.

To ensure the long-lasting use of your chair and rocker, wipe down with a damp cloth and use a mild soap solution if necessary. Do not use abrasive cleaners. Always store product in a clean dry place.

Maintenance

Always check parts regularly for tightness of screws, nuts and other fasteners – tighten or replace if required. To maintain the safety of your chair and rocker, seek prompt repairs for bent, torn, worn or broken parts. Use only those parts and accessories approved by **CNP Brands**.

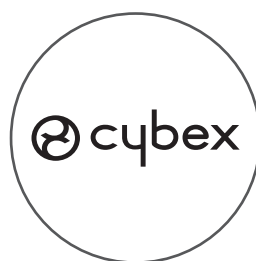
If you have any difficulties in assembling the chair and rocker, please contact our Service Department.

In Australia, contact **CNP Brands on 1300 667 137**, in New Zealand contact **Wainhouse Distribution on 0800 567 5000**.



CNP BRANDS

CHILDCARE NURSERY PRODUCTS | EST. 1899



Distributed in Australia by CNP Brands
20 Calarco Drive,
Derrimut, VIC, 3030
Customer Service 1300 667 137

W: www.cnpbrands.com.au
E: info@cnpbrands.com.au
F: www.facebook.com/CNPBrands
I: @cnp_baby

Distributed in New Zealand by Wainhouse
Distribution
2-6 Argyle St, Morningside,
PO Box 41-014,
St Lukes, Auckland, New Zealand
Customer Service: 0800 567 5000

E: helpline@wainhousedist.co.nz

