



# **INDOOR COOKING**

Drawer Microwave  
KMWR<sub>30</sub>

Installation Manual

 **HESTAN**

## **WARNING**

IF THE INFORMATION IN THIS MANUAL IS NOT FOLLOWED EXACTLY, A FIRE OR EXPLOSION MAY RESULT CAUSING PROPERTY DAMAGE, PERSONAL INJURY, OR DEATH.

Do not store or use gasoline or other flammable vapors and liquids in the vicinity of this or any other appliance.

Installation and service must be performed by a qualified installer or service agency.

DO NOT REPAIR, REPLACE OR REMOVE ANY PART OF THE APPLIANCE UNLESS SPECIFICALLY RECOMMENDED IN THE MANUAL. IMPROPER INSTALLATION, SERVICE OR MAINTENANCE CAN CAUSE INJURY OR PROPERTY DAMAGE. REFER TO THIS MANUAL FOR GUIDANCE. ALL OTHER SERVICING SHOULD BE DONE BY A HESTAN AUTHORIZED SERVICE TECHNICIAN.

READ THESE INSTRUCTIONS CAREFULLY AND COMPLETELY BEFORE INSTALLING OR USING YOUR APPLIANCE TO REDUCE THE RISK OF FIRE, BURN HAZARD, OR OTHER INJURY. KEEP THIS MANUAL FOR FUTURE REFERENCE.

## SAFETY DEFINITIONS

---

### **WARNING**

THIS INDICATES THAT DEATH OR SERIOUS INJURY MAY OCCUR AS A RESULT OF NOT OBSERVING THIS WARNING

### **CAUTION**

THIS INDICATES THAT MINOR OR MODERATE INJURY MAY OCCUR AS A RESULT OF NOT OBSERVING THIS WARNING.

### **NOTICE**

THIS INDICATES THAT DAMAGE TO THE APPLIANCE OR PROPERTY MAY OCCUR AS A RESULT OF NOT OBSERVING THIS WARNING.

INSTALLER: LEAVE THIS MANUAL WITH THE OWNER OF THE APPLIANCE.

HOMEOWNER: RETAIN THIS MANUAL FOR FUTURE REFERENCE.

INSTALLATION AND SERVICE MUST BE PERFORMED BY A QUALIFIED INSTALLER.



## TABLE OF CONTENTS

---

1	SAFETY PRECAUTIONS - BEFORE YOU BEGIN
2	MODEL NUMBERS
2	RATING LABEL
2	REGULATORY / CODE REQUIREMENTS
2	IMPORTANT NOTES
3	CLEARANCES AND DIMENSIONS
10	INSTALLATION STEPS

EN

## SAFETY PRECAUTIONS - BEFORE YOU BEGIN

---

When properly cared for, your Hestan Drawer Microwave will provide safe, reliable service for many years. When using this microwave, basic safety practices must be followed as described in the following pages.

IMPORTANT: Save these instructions for the local Utility Inspector's use.

INSTALLER: Please leave these Installation Instructions with the owner.

OWNER: Please read these Instructions and save them for future reference.

### **⚠ WARNING**

#### **ELECTRICAL SHOCK HAZARD**

Disconnect power before installing or servicing appliance. Failure to do so can result in electrical shock or death. It is the responsibility of the user to have the appliance connected by a licensed electrician in accordance with all applicable codes and standards, including fire-related construction. See "ELECTRICAL CONNECTION" for details.



#### **ELECTRICAL SUPPLY AND GROUNDING**

- This appliance must be grounded. Grounding reduces the risk of electric shock in the event of a short circuit. See "INSTALLATION STEPS" on page 10 for instructions.
- This appliance must be connected to 120 VAC Single Phase, 60 Hz, with a current rating as shown in the model number listing on page 2.
- OWNER: Have the installer show you where the electric circuit breaker is located so you know how to shut off the power to this appliance.

#### **GENERAL SAFETY PRECAUTIONS**

When properly cared for, your new Drawer Microwave has been designed to be a safe, reliable appliance. Read all instructions carefully before using it. When using kitchen appliances, basic safety precautions must be followed.

### **⚠ WARNING**

TO REDUCE THE RISK OF FIRE, ELECTRIC SHOCK, OR INJURY TO PERSONS, OBSERVE THE FOLLOWING:

- a) Use this microwave only as intended by the manufacturer. If you have any questions, contact the manufacturer.
- b) Before servicing or cleaning unit, unplug the microwave or switch power off at service panel and lock the service disconnecting means to prevent power from being switched on accidentally. If the appliance cannot be unplugged and the service disconnecting means cannot be locked, securely fasten a prominent warning device, such as a tag, to the service panel.

## MODEL NUMBERS

MODEL NO.	DESCRIPTION	CIRCUIT BREAKER
KMWR30	30" Drawer Microwave	15 Amps

All units 115 VAC 60 Hz

## RATING LABEL

The rating plate includes model and serial number. Open the Drawer Microwave fully. The label is beyond the back wall of the drawer facing up from the bottom surface.

If service is necessary, contact Hestan Customer Care with the model and serial number information shown on the label.



TYPICAL RATING LABEL

## REGULATORY / CODE REQUIREMENTS

Installation of this cooking appliance must be made in accordance with local codes. In the absence of local codes, this unit should be installed in accordance with the National Electrical Code and local codes.

This appliance must be electrically grounded in accordance with local codes or in the absence of local codes with the National Electrical Code ANSI/NFPA 70, or Canadian Electrical code CSA C22.1.

## IMPORTANT NOTES

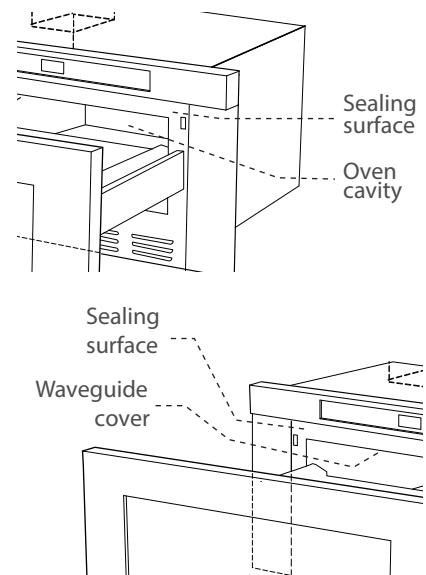
### UNPACKING YOUR DRAWER MICROWAVE

- Remove all packing materials from inside the Drawer Microwave. **DO NOT REMOVE THE WAVEGUIDE COVER**, which is located on the top of the Drawer Microwave.
- Remove the feature sticker, if there is one. Check the drawer for any damage, such as misaligned or bent drawer, damaged drawer seals and sealing surfaces, broken or loose Drawer Microwave guides and dents inside the cavity or on the front side of the drawer. If there is any damage, do not operate the Drawer Microwave and contact your dealer or a HESTAN AUTHORIZED SERVICER.

### IMPORTANT NOTES TO THE INSTALLER

- Read all of the Installation Manual before installing the Drawer Microwave.
- Remove all packing material before connecting the electrical supply.
- Observe all governing codes and ordinances.

BE SURE TO LEAVE THESE INSTRUCTIONS WITH THE CONSUMER.



# CLEARANCES AND DIMENSIONS

EN

## IMPORTANT NOTES TO THE CONSUMER

Keep this manual with your Use and Care Manual for future reference.

- As when using any microwave oven generating heat, there are certain safety precautions you should follow. These are listed in the Use and Care Manual. Read all and follow carefully.
- Be sure your Drawer Microwave is installed and grounded properly, in accordance with local codes by a qualified installer or service technician.

## IMPORTANT SAFETY INSTRUCTIONS

**⚠ WARNING** If the information in this manual is not followed exactly, a fire or electrical shock may result that could cause property damage, personal injury or death.

**⚠ WARNING** To reduce the risk of tipping, the Drawer Microwave must be secured by a properly installed Anti-Tip block.

**⚠ WARNING** Do not install drawer in any combustible cabinetry unless it meets the stated clearances and dimensions on the following pages. See Figure 1, 2 and 3.

- Make sure the wall coverings and the cabinets around the Drawer Microwave can withstand the heat generated by the appliance.

**⚠ WARNING** Never leave children alone or unattended in the area where a Drawer Microwave is in use. Never leave the drawer open when the microwave is unattended.

**⚠ WARNING** Stepping, leaning or sitting on the drawer may result in serious injuries and can also cause damage to the Drawer Microwave.

- Do not use the Drawer Microwave as a storage space. This creates a potentially hazardous situation.
- Check that the time of day is in the display. If not, touch **Stop/Clear** to prevent unintended use.

## ABOUT DIMENSIONS

- Figure 1 shows dimensions of the unit. Figures 2 - 3 provide minimum clearance for standard (non-flush) installation. Figures 4 - 9 show clearances and additional information for flush mount installation. Suggested electrical outlet location is shown in figures 2 - 6. <sup>1</sup>
- Contact surface must be solid and level. Pay special attention to the floor on which the Drawer Microwave will sit. The floor of the opening should be constructed of plywood strong enough to support the weight of the unit - about 100 pounds [45 kg].
- Check location where the Drawer Microwave will be installed for proper electrical supply.
- Your Drawer Microwave can be installed into a cabinet by itself or below any electric or gas wall oven. Be sure that the clearance of the floor between the wall oven and the Drawer Microwave is a minimum of 2 inches [5.1 cm].
- Always check electrical codes for requirements.

**⚠ CAUTION** The Drawer Microwave must be placed close enough to the electrical outlet so that the cord is not under tension.

See Figures 1 - 6 for required clearances and dimensions when planning the drawer's location.

<sup>1</sup> An electrical outlet in an adjacent cabinet can be used, as long as the provided electrical cord can reach without pulling tight. Power cord access hole in cabinet should be a minimum 1-1/2" [3.8 cm] diameter hole and deburred of all sharp edges.

## CLEARANCES AND DIMENSIONS (CONT.)

### DRAWER MICROWAVE DIMENSIONS

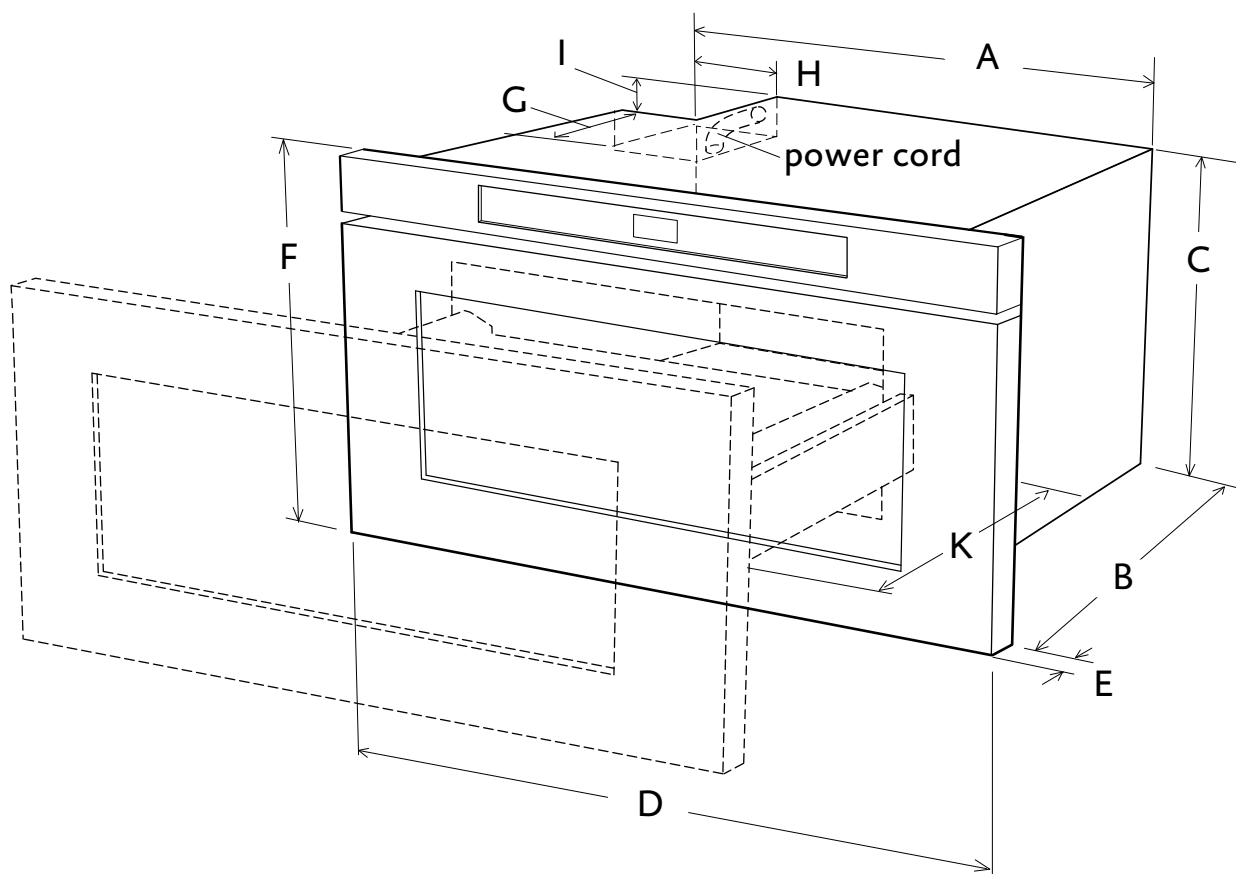


Figure 1. Microwave dimensions

KEY	DESCRIPTION	DIMENSION
A	Unit width	21-5/8 in. [54.9 cm]
B	Depth without door	21-7/8 in. [55.6 cm]
C	Height of body	14-19/32 in. [37.1 cm]
D	Width of door face	30-1/16 in. [76.4 cm]
E	Door thickness	1-5/16 in. [3.3 cm]
F	Height of appliance face	15-7/8 in. [40.3 cm]
G	Cord recess depth	4 in. [10.2 cm]
H	Cord recess width	4-11/16 in. [11.9 cm]
I	Cord recess height	1-3/4 in. [4.5 cm]
K	Auto drawer opening	15 in. [38.1 cm]

## CLEARANCES AND DIMENSIONS (CONT.)

### CABINET DIMENSIONS, STANDARD INSTALLATION

EN

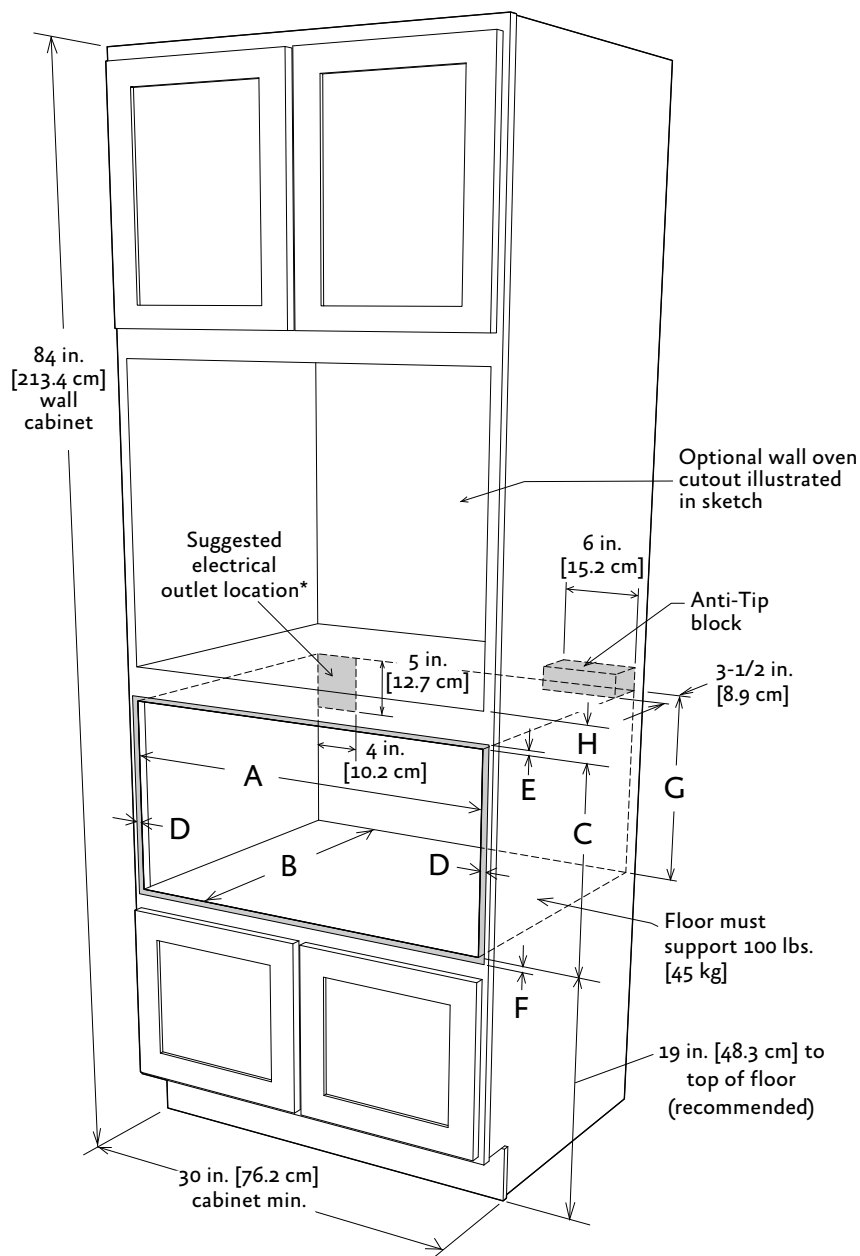


Figure 2. Standard mounting under oven

KEY	DESCRIPTION	DIMENSION
A	Cutout width	28-7/16 in. [72.2 cm]
B	Cutout depth	23-1/2 in. [59.7 cm]
C	Height of opening	15-9/16 in. [39.5 cm]
D	Sides overlap	23/32 in. [1.8 cm]
E	Top edge overlap	3/16 in. [0.48 cm]
F	Bottom edge overlap	1/8 in. [0.32 cm]
G	Bottom of opening to bottom of anti-tip block	14-13/16 in. [37.6 cm]
H	Minimum distance between both openings	2 in. [5.1 cm]

# CLEARANCES AND DIMENSIONS (CONT.)

EN

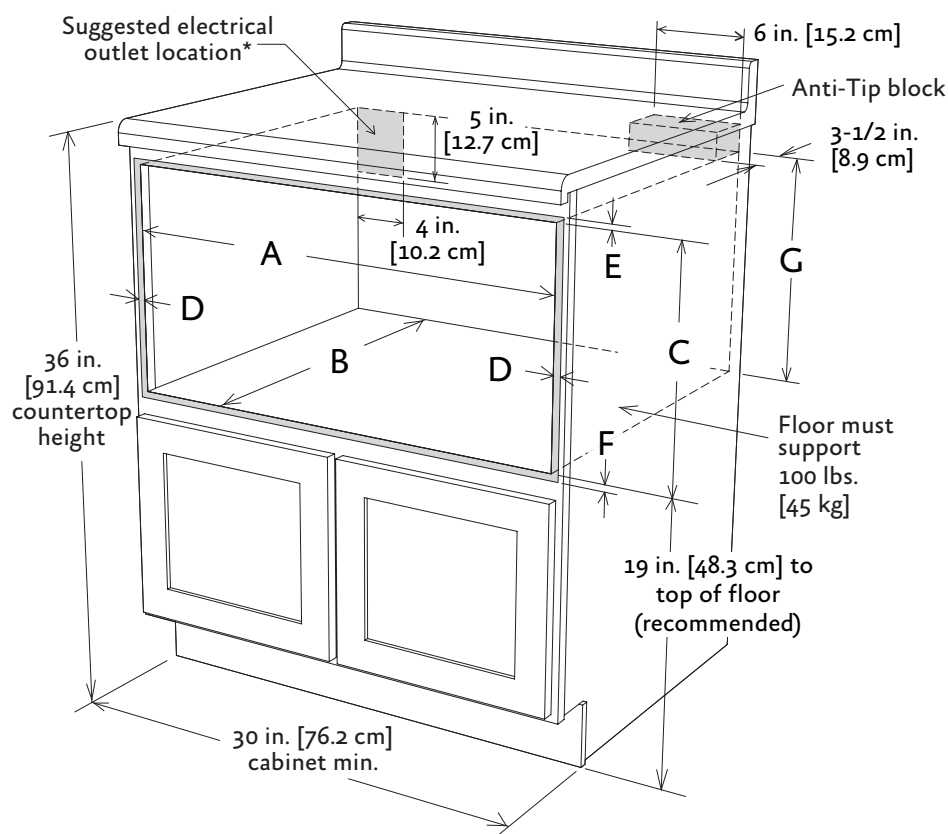


Figure 3. Standard mounting under counter

## FLUSH MOUNT INSTALLATION

If installing flush to the cabinet, the included air deflector must be installed to provide adequate air movement for the appliance. Observe the following cabinet dimensions.

### FLUSH MOUNT AIR DEFLECTOR PARTS

#### Parts included:

Qty.	Description
1	Flush Mount Air Deflector
2	Mounting Screws



## CLEARANCES AND DIMENSIONS (CONT.)

### CABINET DIMENSIONS, FLUSH INSTALLATION

EN

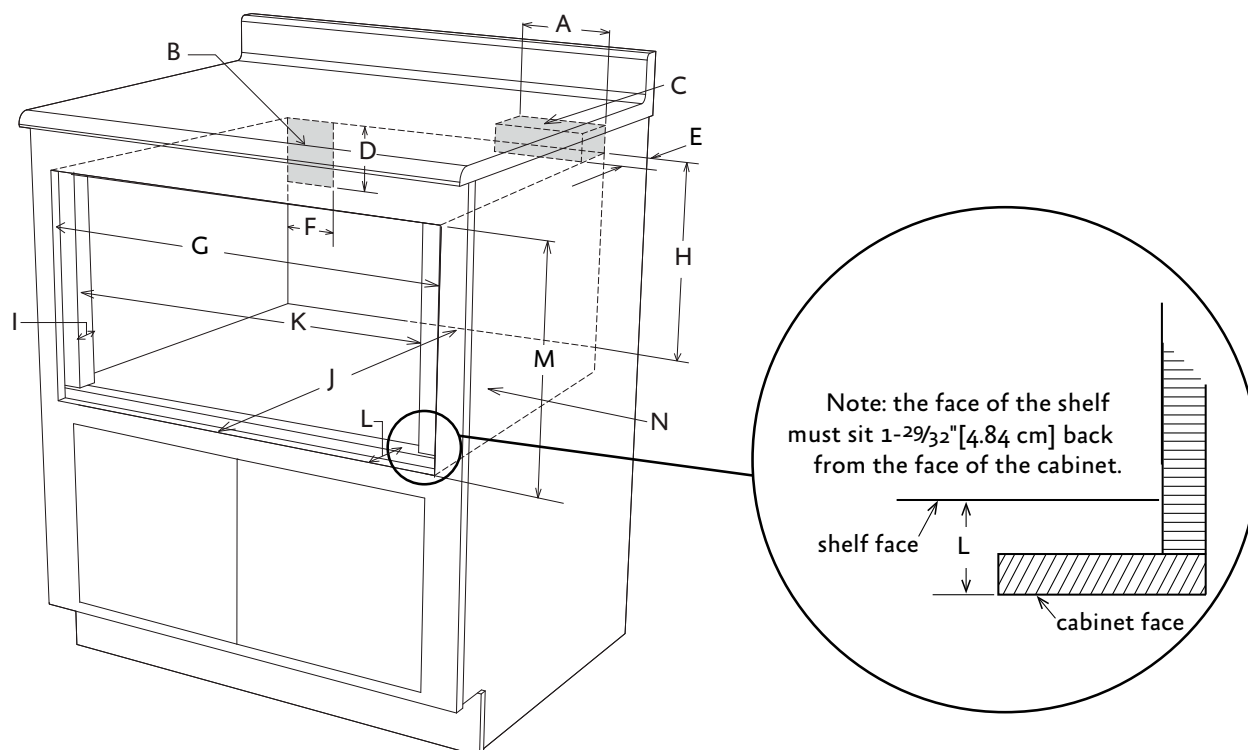


Figure 4. Mounting flush under counter

Key	Dimension
A	6" [15.2 cm]
B	Suggested electrical outlet location
C	Anti-Tip block
D	5" [12.7 cm]
E	3-1/2" [8.9 cm]
F	4" [10.2 cm]
G	30-5/16" [77 cm] minimum 30-5/8" [77.8 cm] maximum
H	14-13/16" [37.62 cm] to bottom of Anti-Tip block
I	1-1/16" [2.7 cm]
J	23-1/2" [59.7 cm] minimum depth
K	28-7/16" [72.2 cm]
L	1-29/32" [4.84 cm]
M	16-7/8" [42.9 cm] opening
N	Floor must support 100 lb [45.4 kg]

## CLEARANCES AND DIMENSIONS (CONT.)

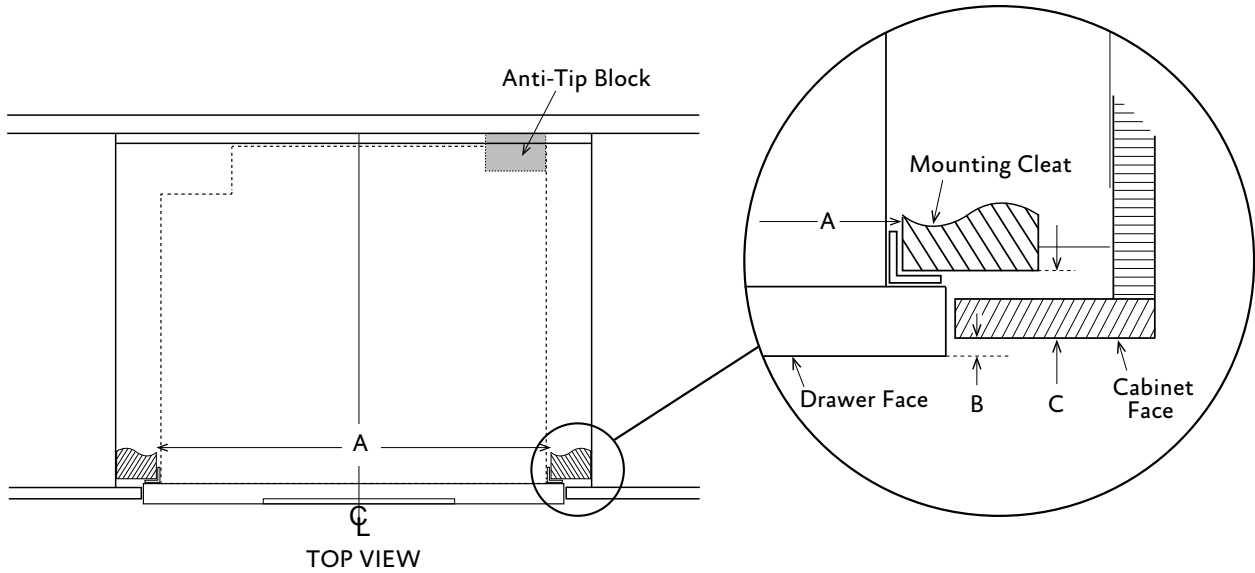


Figure 5. Flush mount, top view

Note: The mounting surface of the finished cleat must sit  $1\frac{15}{64}$ " [3.14 cm] back from the face of the cabinet (pushing the face of the drawer out  $\frac{1}{4}$ " [0.64 cm].)

Key	Dimension
A	28-7/16 - 28-1/2" [72.2 - 72.4 cm] mounting cleat opening width
B	1/4" [0.64 cm]
C	1-15/64" [3.14 cm]

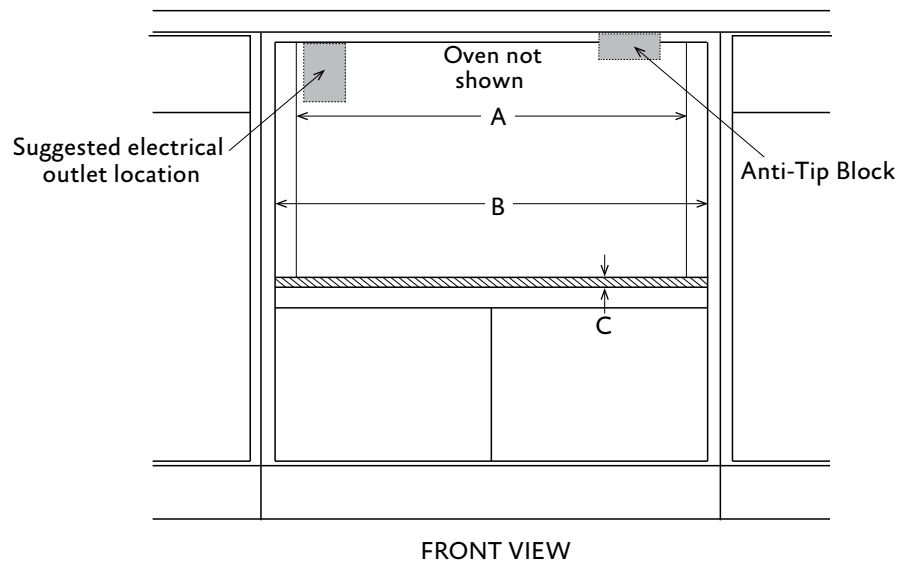


Figure 6. Flush mount, front view

Key	Dimension
A	28-7/16 to 28-1/2" [72.2 - 72.4 cm] mounting cleat opening width
B	30-5/16" [77 cm] minimum, 30-5/8" [77.8 cm] maximum flush opening width
C	3/4" [1.9 cm] shelf

## CLEARANCES AND DIMENSIONS (CONT.)

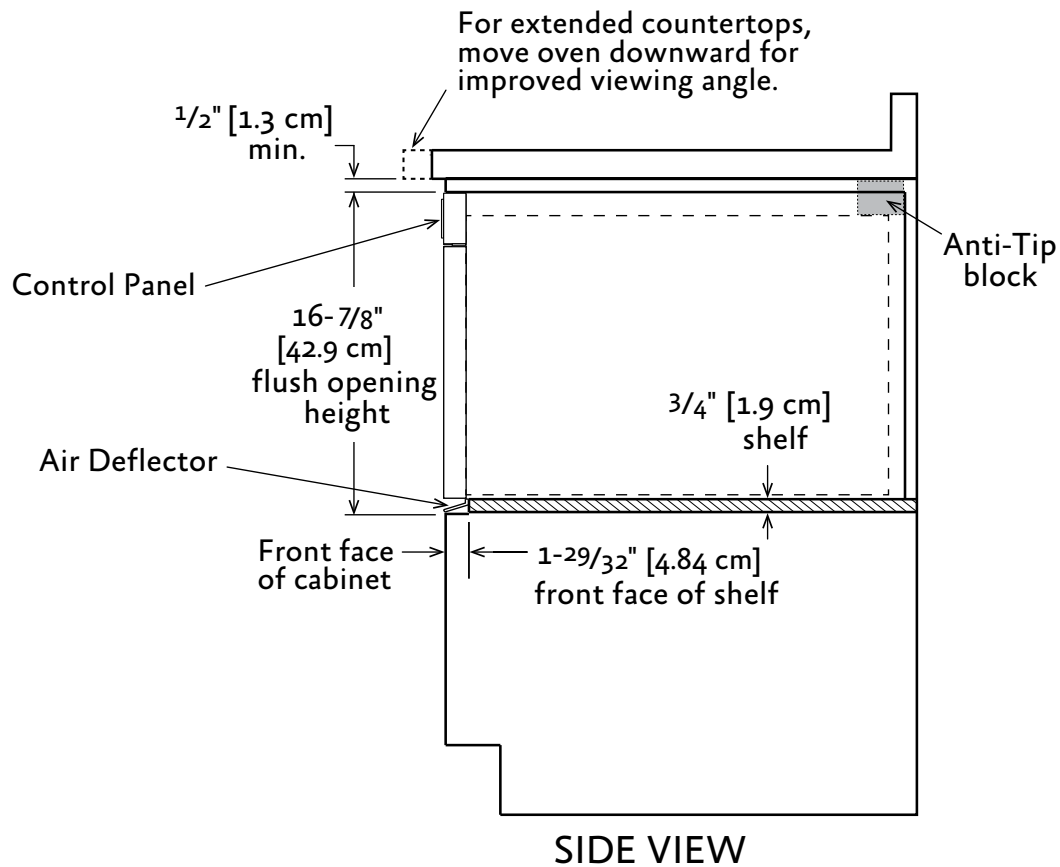


Figure 7. Flush mount, side view

### MOUNTING AIR DEFLECTOR

Shelf detail showing the deflector vent during installation.

- 1) Position air deflector and mark holes.

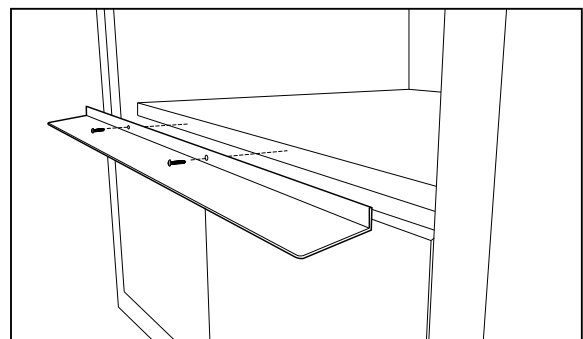


Figure 8

- 2) Pre-drill using a  $\frac{1}{16}$ " [0.16 cm] bit before mounting.

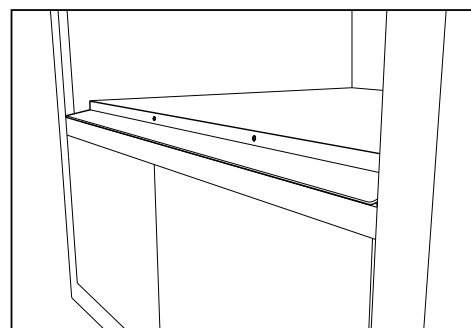


Figure 9

## INSTALLATION STEPS

### ANTI-TIP BLOCK

To reduce the risk of tipping of the drawer, the Anti-Tip block must be properly installed. It must be located 14-13/16 in. [37.6 cm] above the floor on which the Drawer Microwave will sit. The 6 in. [15.2 cm] Anti-Tip block must be provided by the installer. See the figures for necessary dimensions. The Anti-Tip block prevents serious injury that might result from spilled hot liquids.

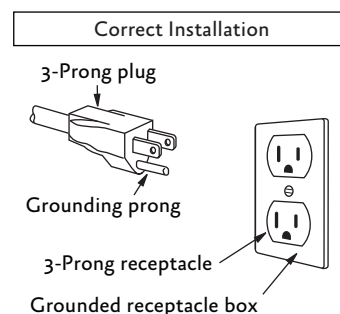
If the Drawer Microwave is ever moved to a different location, the Anti-Tip block must also be moved and installed. When installed to the wall, make sure that the screws completely penetrate the dry wall and are secured in wood or metal so that the block is totally stable. When fastening, be sure that the screws do not penetrate electrical wiring or plumbing.

### ELECTRICAL CONNECTION

The appliance requires a 120 volt, 60 Hz, AC only, 15 amp or more protected electrical supply. It is recommended that a separate circuit serving only this appliance be provided.

The appliance is equipped with a 3-prong grounding plug. It must be plugged into a wall receptacle that is properly installed and grounded. Should you only have a 2-prong outlet, have a qualified electrician install a correct wall receptacle. Do not cut or remove the grounding prong from this plug.

Note: If you have any questions about the grounding or electrical instructions, consult a qualified electrician or service person.



### GROUNDING INSTRUCTIONS

This appliance must be grounded. The Drawer Microwave is equipped with a cord having a grounding wire with a grounding plug. It must be plugged into a wall receptacle that is properly installed and grounded in accordance with the National Electrical Code and local codes and ordinances. In the event of an electrical short circuit, grounding reduces risk of electric shock by providing an escape wire for the electric current.

### **⚠️WARNING**

Improper use of the grounding plug can result in a risk of electric shock. **DO NOT USE AN EXTENSION CORD. IF THE POWER SUPPLY CORD IS TOO SHORT, HAVE A QUALIFIED ELECTRICIAN OR SERVICEMAN INSTALL AN OUTLET NEAR THE APPLIANCE.**

### FLUSH MOUNTING

For flush mount installation, mount and secure the deflector vent. See instructions on previous pages.

### PLACING DRAWER

1. Place the drawer adjacent to the wall or cabinet opening. Plug the power supply cord into the electrical outlet.
2. Carefully guide the drawer into the prepared opening. Avoid pinching the cord between the oven and the wall.
3. Slide the drawer all the way until the mounting flange is flush with the face of the cabinet. See Figure 10.
4. Open the drawer. Using the 4 holes on the drawer as a template, pre-drill the cabinet using a 1/16" [1.60 mm] bit.
5. Secure the drawer with the 4 screws supplied.

## INSTALLATION STEPS (CONT.)

EN

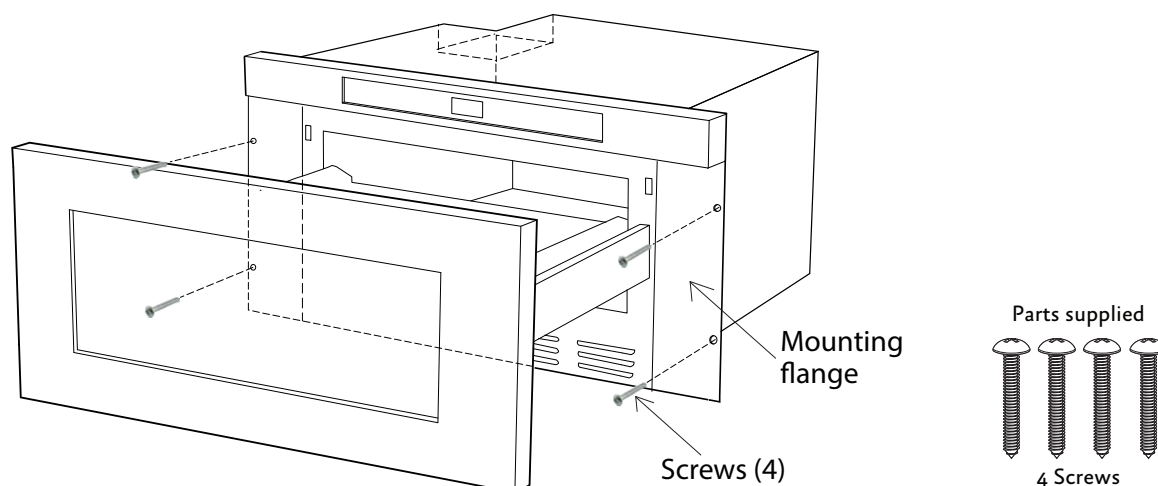


Figure 10. Screws and mounting flange

### TESTING OPERATION

1. Turn power ON to the Drawer Microwave.
2. Set the clock according to the instructions in the Use and Care Manual.
3. Place a microwave-safe container with a cup of water in the unit and close the drawer.
4. Touch START/ADD MINUTE.
5. The microwave's fan should run and its light should come on.
6. When it shuts off, the water should be warm or hot.

Refer to the Use and Care Manual for full operating procedures.

### CLEANING AND MAINTENANCE

Refer to the Use and Care Manual for cleaning instructions.

### BEFORE YOU CALL FOR SERVICE

Read the BEFORE YOU CALL and operating instruction sections in your Use and Care Manual. It may save you time and expense. The list includes common occurrences that are not the result of defective workmanship or materials in this microwave product.

Refer to the warranty in your Use and Care Manual for Hestan's service number and address. Please call or write if you have inquiries about your microwave product and/or need to order parts.