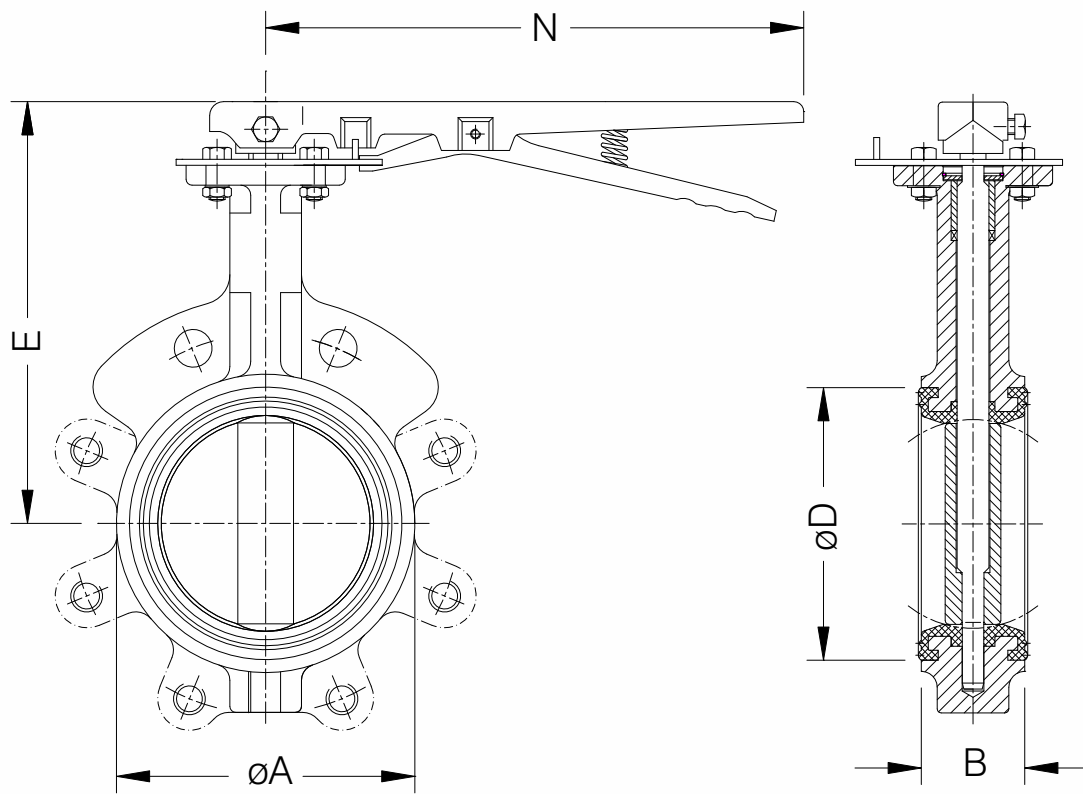
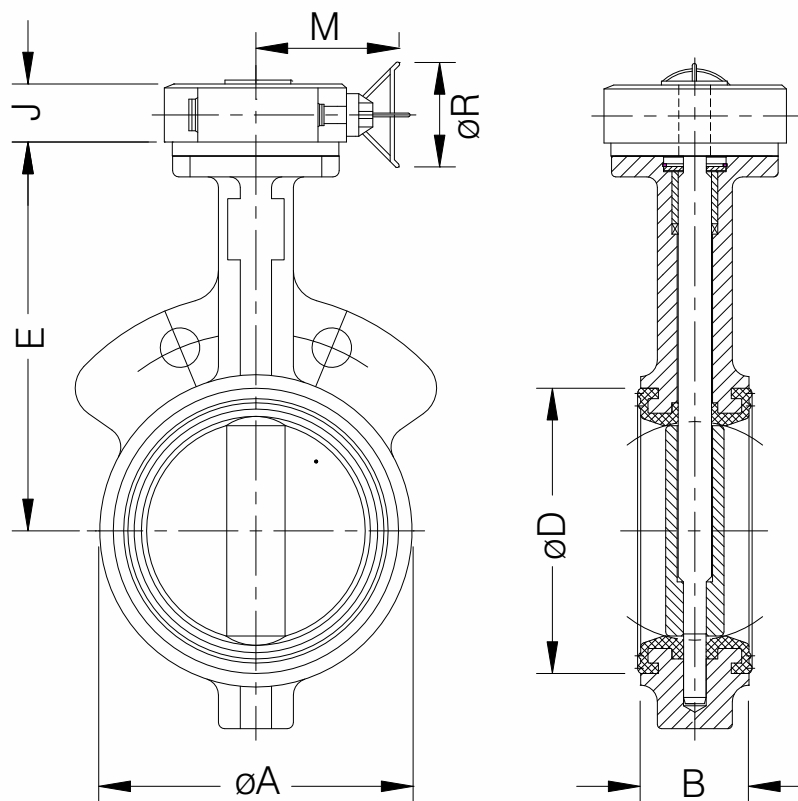


General Outline Drawings :



Lever Operated (LO)



Gear Box Operated (GBO)

General Outline Dimensions :

Valve Size	øA	*B	øD	E	J (Approx.)		N	M (Approx.)	R (Approx.)
					LO	GBO			
#40 / 1.6"	91	43	72	140	35	63	180	240	250
50 / 2"	91	43	72	140	35	63	180	240	250
65 / 2.5"	105	46	88	152	35	63	180	240	250
80 / 3"	120	46	104	160	35	63	180	240	250
100 / 4"	150	52	130	180	35	63	260	240	250
125 / 5"	175	56	158	192	35	63	260	240	250
150 / 6"	205	56	185	205	35	63	400	240	250
200 / 8"	259	60	240	241	51	63	-	240	250
250 / 10"	310	68	292	273	-	63	-	240	250
300 / 12"	364	78	342	311	-	73	-	290	350
350 / 14"	415	78	388	346	-	86	-	300	350
400 / 16"	472	102	442	375	-	82	-	306	500
450 / 18"	525	114	495	406	-	82	-	306	500
500 / 20"	580	127	548	438	-	86	-	322	500
600 / 24"	692	154	654	495	-	113	-	350	600

Note :#For 40mm size the basic valve will be of 50mm NB but with mounting dimensions suitable to mount between flanges of 40mm NB size
 1. Face to face dimensions "B" generally conforming to BSEN 558 Series 20
 2. All dimensions are in mm
 3. For higher size requirement please contact Design Office.

End Connection :

Scope	Flange Drilling Standard
Standard Supply	ANSI B 16.5 150 #
Optional	IS : 1538 Table 4 and 6
	BS : 10 - Table D/E/F
	BS EN 1092.2 (BS : 4505) 6, 10, 16 Bar
	IS : 1538 Table 5
	ANSI B 16.5 150
	DIN 2532
	IS : 6392

Note: For higher size requirement please contact Design Office.