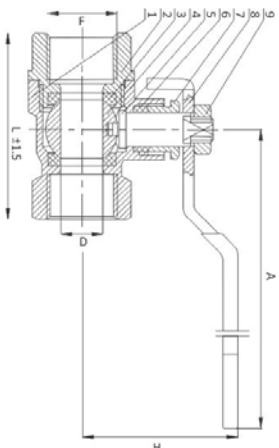


Forged Brass Chrome Plated Brass Ball Valves Article No. - 4913



Legris Series - 4913



Dimensions - Lever Handle

| Code | Spec (inches) | Spec (mm) | F | D | A | H | L |
|------------|---------------|-----------|-------|------|-----|-------|-------|
| 4913 08 13 | 1/4 | 8 | 1/4 | 08 | 97 | 43 | 40 |
| 4913 10 17 | 3/8 | 10 | 3/8 | 10 | 97 | 44.3 | 43.8 |
| 4913 15 21 | 1/2 | 15 | 1/2 | 14 | 101 | 38.5 | 47 |
| 4913 20 27 | 3/4 | 20 | 3/4 | 18.5 | 101 | 42.5 | 53.3 |
| 4913 25 34 | 1 | 25 | 1 | 23 | 112 | 56 | 65 |
| 4913 32 42 | 1 1/4 | 32 | 1 1/4 | 29 | 132 | 62.3 | 73.1 |
| 4913 40 49 | 1 1/2 | 40 | 1 1/2 | 37 | 132 | 67 | 80.9 |
| 4913 50 48 | 2 | 50 | 2 | 47 | 161 | 91 | 98 |
| 4913 65 47 | 2 1/2 | 65 | 2 1/2 | 64 | 225 | 118.5 | 135 |
| 4913 80 46 | 3 | 80 | 3 | 75 | 225 | 129 | 150 |
| 4913 01 45 | 4 | 100 | 4 | 97 | 225 | 144.5 | 178.5 |

Material - Lever Handle

| No. | Part Name | Material |
|-----|-----------|----------|
| 1 | BODY | BRASS |
| 2 | BONNET | BRASS |
| 3 | SEAT | PTFE |
| 4 | BALL | BRASS |
| 5 | STEM | BRASS |
| 6 | PACKING | PTFE |
| 7 | GLAND NUT | BRASS |
| 8 | HANDLE | IRON |
| 9 | LOCK NUT | BRASS |



LEGRIS INDIA PRIVATE LIMITED

Legris House, 99, Pace City-1, Sector 37 Gurgaon - 122001 Haryana, INDIA
Tel. : +91 124 4590600 Fax : +91 11 66173900

E-mail : legris.india@parker.com

www.transair.legris.com | www.parkerlegris.com

Introducing: Parker Legris Make 4913 Series Brass Ball Valve

Ball valves are by definition shut-off valves that open and close. The flow rate is varied by the rotation of an open ball. Our 4913 series Chrome Plated brass ball valve is a unique designed valve which can be used in water application for Plumbing, Oil, Air, Fire Fighting & water circulation systems.

Many choices in sizes, optimum sealing, excellent resistance to scaling, smooth operation due to low friction coefficient of chemically chrome-plated brass, excellent resistance to pressure and temperature constraints.

Theoretically, volumetric flows could be controlled with a ball valve instead of a globe valve. Using a ball valve would even be cheaper.

Material

| | |
|-----------------|---|
| Body | Chromed Plated brass. |
| Handle | RED plastic coated iron with powder coated |
| Stem | Chrome-plated brass |
| Ball | Chrome-plated or Chromium plated shot blasted brass |
| Ball seals/PTFE | PTFE |
| Stem seals | PTFE |

| | |
|---------------------|--|
| Compatible Fluids | Hot & Cold Water, Plumbing, Oil, Air & Fire Fighting |
| Working temperature | Up to 90°C |
| Working pressure | Max. PN 25 |

1. This range of valves are compact in size available with PTFE seals and chrome plated brass ball which is most suitable for hard water and also suitable for plumbing and water applications.
2. We offer a self-washer nut in order to prevent a zero leakage. You will not find in other brand.
3. Body is chrome plated finish with upto 10% malleability due to 58% copper & 38% Zinc content thus prevent breakage even after over-tightening. The wall thickness and the orifice of the body is maximum compared with other existing brands thus having a longer life.
4. According to international standard the lead content should be less than 3%. Other brands following more than 5-6% which is harmful for human consumption.
5. Handle is powder coated with maximum thickness thus prevents rusting and breakage at longer stage.

Technical & Product Advantages

| |
|---|
| Superior ease of operation |
| Maintains and regulates high volume, high pressure and high temp flow |
| Rugged construction and long service life |
| Low purchase and maintenance cost |
| Able to function without side loads |
| Permits inspection and repair of seats and seals without removing the valves body from the line |
| Does not require lubrication |



LEGRIS INDIA PRIVATE LIMITED

Legris House, 99, Pace City-1, Sector 37 Gurgaon - 122001 Haryana, INDIA
Tel. : +91 124 4590600 Fax : +91 11 66173900

E-mail : legris.india@parker.com

www.transair.legris.com | www.parkerlegris.com



Legris Series - 4913

Some of features of 4913 series:

The body of the valve is chrome plated which is relatively a good method for increasing the surface hardness which brings special properties of corrosion and wear resistance without compromising the characteristics of the substrate or base metal due to which it attains the ultimate hard, wear resistant, low friction and anti-corrosion surface.

Why we are doing the Chrome Plating:

It is ultra hard-850-1000HV (Vickers hardness) (65-70RC). It gives superb substrate adhesion-before plating, substrates are subjected to rigorous cleaning, so that the surface to be coated is completely free from contaminants. The deposition temperature is low. It has a bright, attractive finish. It produces very low friction. A good surface finish.

The Body Part

The Body Metal Mainly Contains are ZINC (38%) & COPPER (50%) Why we are using 38% Zinc- To protect the corrosion mainly. It has less zinc than less mechanical strength. That's why we are using 38%. Why we are using 58% Copper - Because of strength, Hardness, ductility, resistance to corrosion. Copper is resistant to corrosion, that is, it will not get rust. Body is chrome plated finish with upto 10% malleability due to 58% copper & 38% Zinc content thus prevent breakage even after over tightening.

We are using virgin Teflon (PTFE - Poly(tetrafluoroethylene) as seal code (PFLBVS/1)

Outstanding performance at extreme temperatures. In fact, it can temporarily withstand temperatures of 260°C and easy to clean up thru hydrophobic & oleophobic.

Handle

The base material is iron with Powder coated which reduces the corrosion even at a longer stage.