

# NATIONAL-SPENCER, INC.

## ZEE LINE LUBRICATION EQUIPMENT

Phone 800-231-1525

Fax 800-637-9511

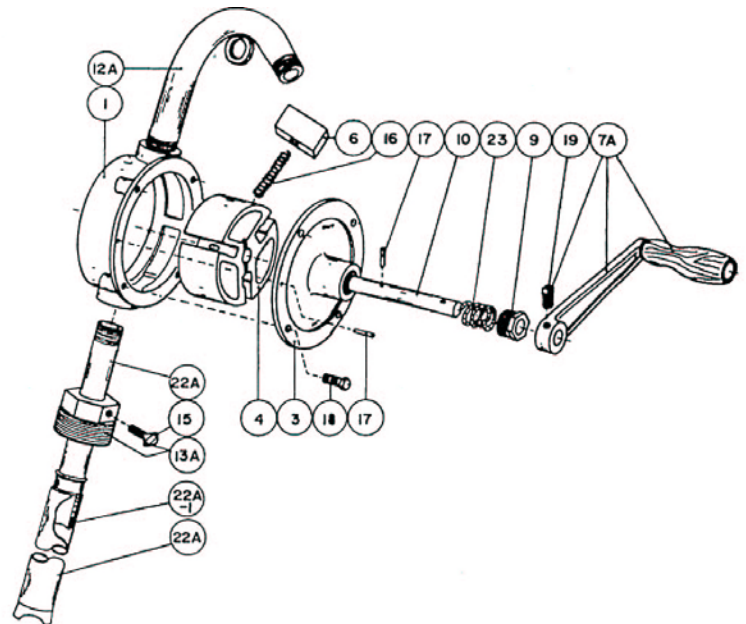
Web Address [www.zeeline.com](http://www.zeeline.com)



### Part #1007

#### Multi- Directional Rotary Vane Hand Pump

For dispensing gasoline, diesel  
fuel and light oil



#### Features

- ❖ 2" bung adapter included
- ❖ Cast iron pump construction
- ❖ Fits 15-55 gallon drums
- ❖ 3/4" NPT (M) discharge spout
- ❖ Bi-directional
- ❖ Self adjusting vanes
- ❖ Extra heavy duty
- ❖ Dispenses 12 oz. per revolution
- ❖ Smooth operation

#### Recommended for

- ✓ Gasoline
- ✓ Diesel fuel
- ✓ Oil

#### Application

- Automotive
- Agriculture
- Industrial
- For pumping gasoline, diesel fuel or light oil directly from 15-55 gallon drum

#### Number of boxes and contents

- 1 box (19 1/2" x 9" x 6 1/2") (23 lb.)
- UPC Code 0 1595401007 4

Ref. No.	Part No.	Description/Qty.
1	466471	Casing (1)
3	466472	Front Cover (1)
4	410200	Rotor (1)
6	410210	Vane(3)
7A	431720	Handle Assembly (1)
9	410080	Packing Nut (1)
10	465760	Pump Shaft (1)
12A	435501	Spout Assembly (1)
13A	435500	Barrel Nut Assembly (1)
15	163270	Thumb Screw (1) 1/4 UNC x 3/4
16	199710	Spring, Cadmium Plated (3)
17	137610	Taper Pin #3, 3/4 long (3)

Ref No.	Part No.	Description/Qty.
18	119760	Hex HD Bolt (4) 5/16 UNC x 3/4
19	158180	Sq. Bolt (1) 5/16 UNC x 3/4
22A	435502	Suction Pipe Assembly (includes o-ring) (1)
22A-1	198561	O-Ring, Graphite Impregnated (1)
23	432250	Twisted Packing (1) #814, 1/4 dia. x 21 long
N/S	2178	3/2" x 8' Rubber Hose
N/S	497144	Repair Parts Kit (1) (Items 6, 16, 17 & 23)
	(N/S - not shown)	