

Non-pasted Wallpaper hanging guide



Before

The usual procedures for non-woven wallpapers are valid. As a general rule, the surface must be dry, stable, evenly absorbent, clean, plain, and smooth. Old wallcoverings should be removed completely. Our non-woven wallpaper is not fully opaque, so please take care of any dark areas on the wall before you apply it. Otherwise, they might show through the wallpaper.

To make the wallpaper look great, check that the wall is free of any dark spots. Wallpaper primer such as PRO-977 Ultra Prime® is recommended for best results and easier removal. Once you have unpacked your wallpaper, we suggest unrolling the panels and letting them stretch overnight to ease the installation process—that is, if you have a floor space that allows it.

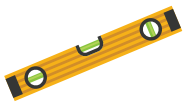


For the wallpaper to stick properly, be sure to cure freshly painted walls for at least 30 days before hanging wallpaper to ensure that the surface is completely dry.



Our wallpaper is non-pasted; thus, hang using the “paste the wall” technique with paste for non-woven wallpapers or heavy-duty PVA-based wallpaper glue. Multiple panels are hung edge-to-edge.

Tools



Level



Wallpaper paste or
Wallpaper glue



Roller or
Brush



Flexible smoothing tool
with round corners



Sponge



Utility knife

Hanging

Lay out the panels before you start in order to verify the positioning of the wallpaper panels.

Now it's time to start the wallpaper install. Using a pencil and a level, draw a light line down the wall **A** (plumb line). This line will be the starting point for hanging. Mark a perpendicular line so that the first length can be hung at 1" (3 cm) through the corner. Be sure not to make the mark too dark, otherwise, it may show through lighter colored papers.

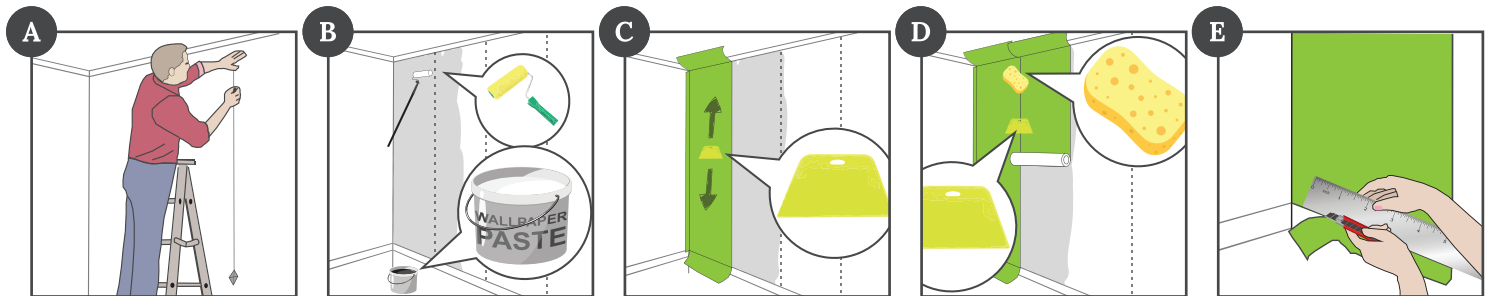
Using a brush or a roller, apply an even layer of adhesive **B** where the first two panels will go. We recommend Roman PRO-880 Ultra Clear® (for US customers), Henkel Metylan Direct® (for EU customers), or similar adhesive. Be sure not to paste the whole wall as adhesives applied too far in advance may dry out before wallpaper can be hung. Be careful not to get glue on the design. If that happens, clean it off with a damp cloth/sponge immediately!

Maneuver the first panel to the correct location **C**, beginning at the top and ensuring that the wallpaper is straight. It is best to leave about half an inch at both the top and bottom in order to better trim the paper afterwards. After you've properly hung your first piece, you should start to flatten out any air bubbles with the smoothing tool. This will also ensure that the wallpaper will adhere correctly. Begin at the top of the wall, continually moving down to smooth and adhere your paper, carefully working to make sure that any extra adhesive does not seep out. It is best to refrain from using rough tools such as hard plastic squeegees that can mar or rip your wallcoverings. Always take care to wipe up any extra adhesive with a damp cloth or sponge before it dries. It is much more difficult to remove paste once it has dried.

Once you have properly installed the first panel, continue placing the next pieces one at a time, aligning each seam against the other **D**, being sure not to overlap. Again, ensure that you quickly use a damp cloth or sponge to wipe up any extra paste from the seams or paper. In order to achieve the best results, we recommend using a seam roller to ensure proper adherence and a smooth look.

When all the panels are in place, trim any excess wallpaper at the ceiling and skirting board with a ruler and utility knife **E**; always move the ruler while keeping the knife in the cut. When cutting the wallpaper, make sure to use a sharp paper knife to avoid tearing the paper.

After the wall is complete, avoid any drafts and temperature/humidity changes for 24 hours to ensure that the wallpaper adheres properly.



Removal

When installed using a strippable adhesive (for example, Roman PRO-880 Ultra Clear®), non-woven wallpaper can easily be removed without damaging walls. On installs that may have used a more aggressive wallpaper adhesive, non-woven wallpaper can be removed using Roman's wallpaper and paste removal tools and concentrate.

Remove wallpaper by peeling the wallpaper off—slowly up or down at a 90-degree angle from the wall.

Tip: Wall damage can be minimized or eliminated by using a quality wallpaper primer such as PRO-977 Ultra Prime® and a strippable adhesive such as PRO-880 Ultra Clear® during installation.

Material: Coated non-woven paper fleece, free of PVC,
free of glass fibres

Opacity: > 91 % - ISO 2471

Thickness: 290 µm

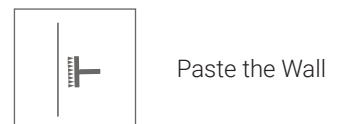
Whiteness: > 70 % - CIELAB

Application temperature: 59°F - 86°F / 15°C - 30°C

Fire behaviour: Flame retardant - C-s1, d0 according to EN 13501, when applied to plasterboard, A1 or A2 substrates



Straight match



Paste the Wall