



Ranger-1

**Wifi Video Doorbell with Smart Motion Security System**  
HD • Night Vision • Advanced 2-Way Audio Support • Plug & Play



**User Guide**

## Introduction

Get advanced security at your doorstep with Ranger-1, a smart WiFi doorbell with HD video support. Get instant realtime alerts when visitors press your doorbell or trigger the smart motion detectors. The 2-way audio system lets you hear and speak to any visitor at your doorstep from a smartphone or tablet. The sleek design and finish with perfectly fit in with your home decor and does not require any complicated installation. Ranger-1 works in any home and includes a replaceable rechargeable battery pack, so you can remove the battery with ease or you may hardwire it to your existing doorbell setup.

## Packaging Contents:

- 18650 Battery\*2pcs
- Screw Bags\*2
- User Guide

## Specification:

- Power Input: 18650 Battery 3350mAh or AC8-24V
- Camera: 1280\*720
- Resolution: 6 LED, 5m Night Vision
- IR Distance: 166°
- Lens Angle View: Wi-Fi 2.4GHz, IEEE 802.11b/g/n
- Network: Max Support 32GB
- Micro SD Card storage:

## Features:

- **Smart motion detection:** Receive an alert and a recorded video clip whenever motion is detected
- **On demand access:** Access live video at any time from your smartphone or tablet
- **Night Vision:** IR Night Vision-Equipped with infrared lights and IR cut, the camera can automatically switch to black and white night vision view when in the dark to ensure you a crystal view.
- **2-Way Audio:** Two-way audio, one-way HD video gives you a great view of your visitors from your smartphone while still ensuring your privacy.
- **HD Video Recording:** Whether you missed a visitor or want to replay a conversation, Ranger-1 records each interaction at your door.
- **Easy Setup:** the plug and play set up works with any existing door frame and doorbell electric point
- **Low Power Consumption:** The low energy consumption ensures the doorbell runs for 6-8months on a single battery, before you need to recharge the same.

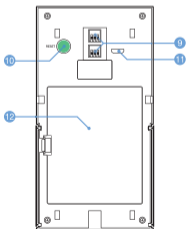
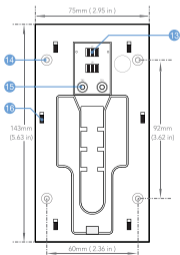
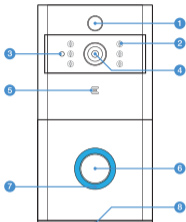
## Precautions

Please read all safety instructions and warnings thoroughly before using this product. Improper use of this product may result in damage to this or attached products.

1. Do not disassemble the back-up battery or attempt to fix it.
2. Kindly use an original charging cable provided to charge the product.
3. Do not attempt to replace any part of this Back-up battery or battery inside.
4. Do not crush, puncture, dispose of in fire, short the contacts or expose the battery to water or other liquids.
5. Do not connect input and output in reverse.
6. Do not store or use the battery in a high temperature environment, including intense sunlight or heat.
7. Avoid drops, bumps, abrasions and impacts.
8. If there is any reason to believe that there is damage to the battery, discontinue use immediately.
9. If you find that the battery is too hot, or is emitting an odor, or is deformed, punctured or exhibits any suspicious or abnormal behavior, discontinue use immediately and contact our customer service.
10. Always charge this product before extended storage.

## Appearance & Interface Description

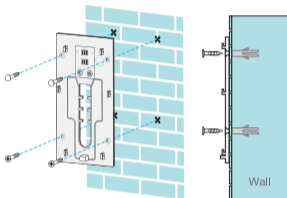
1. Motion Sensor
2. Infrared LED
3. Light Sensor
4. 166° HD Camera
5. Microphone
6. Multifunction Button
7. LED Indicator
8. Speaker
9. AC 8V ~ 24V Power Input
10. Reset Button
11. Micro-USB Charging Input
12. Battery Compartment
13. Power Contacts
14. Screw Holes
15. Wire Terminals
16. Mounting Hook



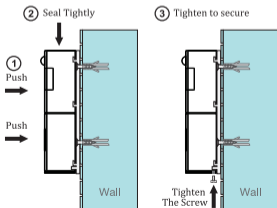
## Operation Instructions

### 1. Bracket Installation

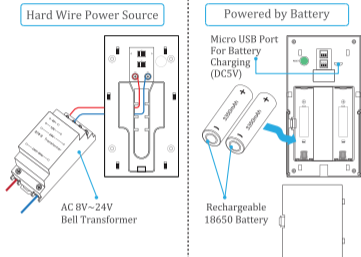
- Screw the Mounting Plate on the wall as shown below



- Mount Ranger-1 onto the Mounting Plate as below



## 2. Power Supply Installation



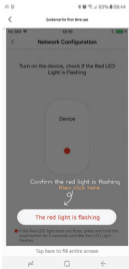
## 3. Promate Ranger-1 Application Usage

- Download the application for your Android or iOS device by scanning the QR code below using a QR code reader application

- Open the app and click the “+” → Add Device



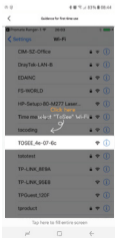
- Click the “The Red Light Is Flashing” when you see the LED indicator flashing in Red



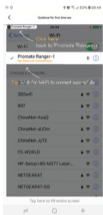
- Click the “Go to setup to connect device”



- Choose the Wifi hotspot name that looks like “TOSEE\_4e-07-6c”



- Wait for the Wifi hotspot to connect successfully and then click the back button to go back to the app

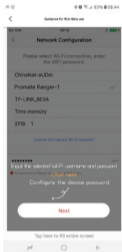


- Click the “Next ” button





- Input the Wifi password



- Configure the device management password and click “Next”



- Name the device (Eg. Front Door, Living Room etc.) and click the “Complete” button to finish setup

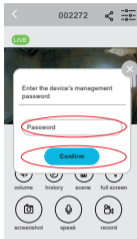


#### 4. Sharing The App with Other Users

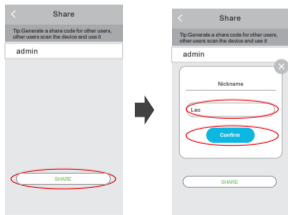
- Enter the app and click on the share button



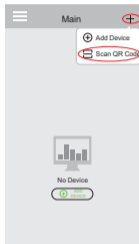
- Input the device management password and click “Continue”



- Click Share , name the new user and click “Confirm”



- The application generates a QR share code
- The new user needs to download the app from the Apple Store or Google PlayStore → Click the “+” button and click “Scan QR Code”



Correct disposal of this Product  
(Waste Electrical & Electronic Equipment (WEEE))

Your product is designed and manufactured with high quality materials and components which can be recycled and reused. This symbol means that electrical and electronic equipment, at their end-of-life should be disposed of separately from your household waste. Please dispose of this equipment at your local community waste collection/recycling center.



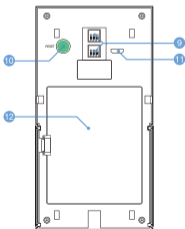
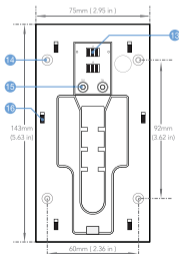
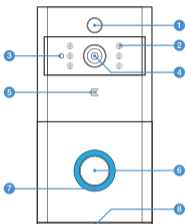
This product complies with European safety and electrical interference directives

## RoHS

This product does not contain environmentally hazardous materials (lead, mercury, cadmium, hexavalent chromium and brominated flammable agents: PBB and PBDE).

## Descripción del Aspecto y la Interfaz

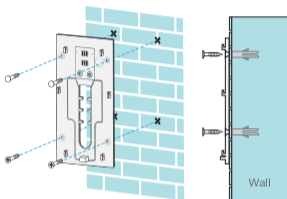
1. Sensor de Movimiento
2. LED Infrarrojo
3. Sensor de Luz
4. Cámara HD de 166°
5. Micrófono
6. Botón Multifunción
7. Indicador de LED
8. Altavoz
9. Potencia de Entrada AC 8V ~ 24V
10. Botón de Reinicio
11. Entrada de Carga Micro-USB
12. Compartimiento de las Pilas
13. Contactos de Potencia
14. Agujeros de los Tornillos
15. Terminales de Cable
16. Gancho de Montaje



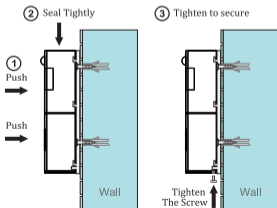
## Instrucciones de Operación:

### 1.Instalación del Soporte:

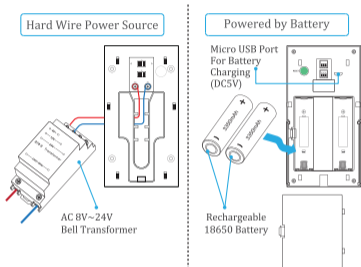
- Atornille la Placa de Montaje en la pared como se muestra a continuación:



- Monte a Ranger-1 en la Placa de Montaje como se muestra a continuación



## 2. Instalación del Suministro Eléctrico:



## 3. Uso de la Aplicación Promate Ranger-1

- Descargue la aplicación para su dispositivo Android o iOS escaneando el código QR a continuación usando una aplicación lectora de códigos QR

- Abra la aplicación y oprima el “+” → Agregar Dispositivo



- Pulse en “La Luz Roja está Parpadeando” cuando vea el indicador LED parpadeando en Rojo

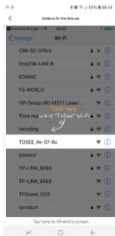




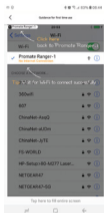
- Pulse en “Ir a configuración para conectar dispositivo”



- Elija el nombre del punto de acceso Wifi que se parece a “TOSEE\_4e-07-6c”



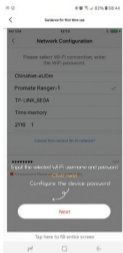
- Espere que el punto de acceso Wifi se conecte exitosamente y después pulse el bo-tón de regreso para regresar a la aplicación



- Pulse en el botón “Siguiente”



- Ingrese la contraseña Wifi



- Configure la contraseña de gestión de dispositivos y pulse “Siguiente”



- Nombre el dispositivo (P.ej. Puerta Frontal, Sala, etc.) y pulse el botón "Completar" para terminar la configuración

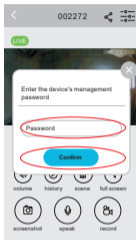


#### 4. Cómo compartir la aplicación con otros usuarios:

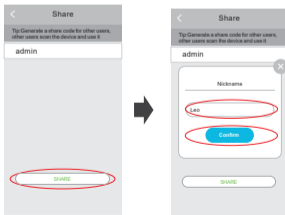
- Ingrese a la aplicación y pulse el botón para compartir



- Ingrese la contraseña de gestión de dispositivos y pulse “Continuar”



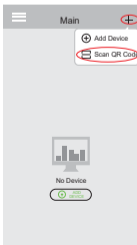
- Pulse Compartir, nombre el usuario nuevo y pulse “Confirmar”



- La aplicación genera un código QR para compartir

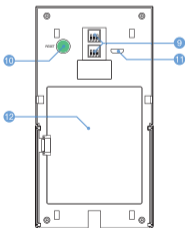
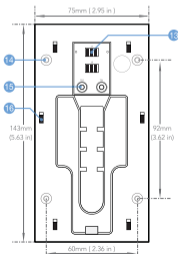
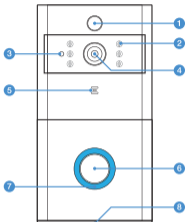


- El usuario nuevo tiene que descargar la aplicación de la Tienda Apple o Google PlayStore → Pulse el botón "+" y pulse en "Escanear Código QR"



## Aspect & Description Interface

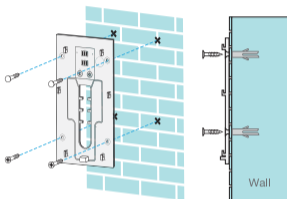
1. Capteur de Mouvement
2. LED Infrarouge
3. Capteur de Lumière
4. Caméra HD 166°
5. Microphone
6. Bouton Multifonction
7. Voyant Indicateur LED
8. Haut-Parleur
9. Alimentation Électrique AC 8V ~ 24V
10. Bouton de Réinitialisation
11. Chargement Micro-USB
12. Compartiment des Piles
13. Contacts d'Alimentation
14. Trous de Vis
15. Terminaux Fils
16. Crochets de Fixation



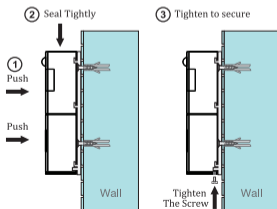
## Mode d'Emploi :

### 1. Installation du support :

- Vissez la plaque de montage sur le mur comme indiqué ci-dessous :

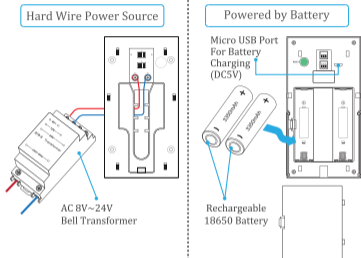


- Montez le Ranger-1 sur la Plaque de Montage comme indiqué ci-dessous :





## 2. Installation de l'alimentation :



## 3. Utilisation de l'application Promate Ranger-1

- Téléchargez l'application pour votre appareil Android ou iOS en scannant le code QR ci-dessous en utilisant une application de lecteur de code QR

- Ouvrez l'application et cliquez sur "+" → Ajouter Appareil



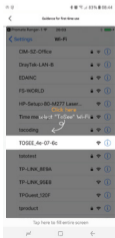
- Cliquez sur "Le voyant rouge clignote" lorsque l'indicateur LED clignotera en Rouge.



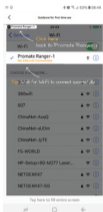
- Cliquez sur "Accédez au programme d'installation pour connecter l'appareil".



- Choisissez le WiFi qui ressemble à "TOSEE\_4e-07-6c"



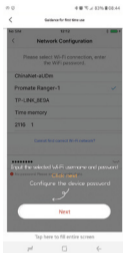
- Attendez que le WiFi se connecte avec succès, puis cliquez sur le bouton de retour pour revenir à l'application.



- Cliquez sur le bouton “Suivant”



- Entrez le mot de passe Wifi



- Configurez le mot de passe de gestion du périphérique et cliquez sur «Suivant»



- Donnez un nom à l'appareil (Ex. Porte d'Entrée, Salon, etc.) et cliquez sur le bouton "Complétez" pour terminer l'installation.

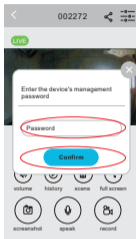


#### 4. Partage de l'Application avec d'autres Utilisateurs :

- Entrez l'application et cliquez sur le bouton de partage



- Saisissez le mot de passe de gestion des périphériques et cliquez sur «Continuer».



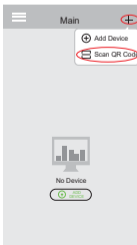
- Cliquez sur Partager, donnez un nom au nouveau utilisateur et cliquez sur “Confirmer”.



- L'application génère un code de partage QR.



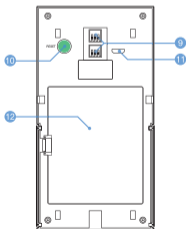
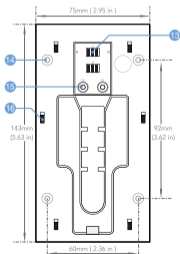
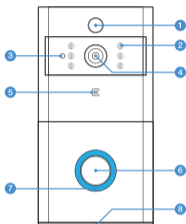
- Le nouvel utilisateur doit télécharger l'application à partir de l'Apple Store ou du Google PlayStore → Cliquez sur le bouton "+" et cliquez sur "Scan QR Code".





## Aussehen & Schnittstellenbeschreibung

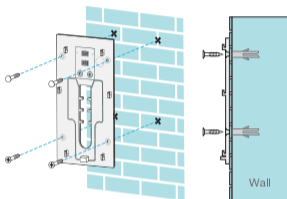
1. Bewegungssensor
2. Infrarot-LED
3. Lichtsensor
4. 166° HD-Kamera
5. Mikrofon
6. Multifunktionstaste
7. LED-Anzeige
8. Lautsprecher
9. AC 8V ~ 24V-Eingang
10. Rücksetztaste
11. Micro-USB-Ladeeingang
12. Batteriefach
13. Stromkontakte
14. Schraubenlöcher
15. Drahtklemmen
16. Montagehaken



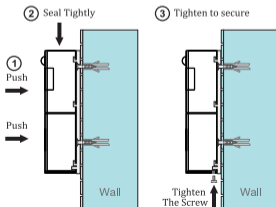
## Bedienungsanleitung:

### 1. Haltermontage:

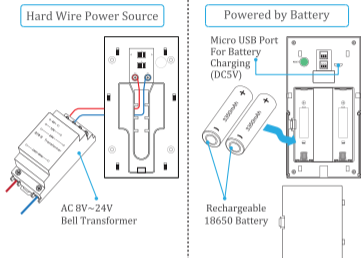
- Schrauben Sie die Befestigungsplatte an die Wand wie nachfolgend dargestellt:



- Befestigen Sie Ranger-1 auf der Befestigungsplatte wie nachstehend



## 2. Installation der Stromversorgung:



## 3. Promate-Ranger-1 Anwendungsnutzung

- Laden Sie die Anwendung für Ihr Android- oder iOS-Gerät herunter indem Sie den nachfolgenden QR-Code scannen mittels einer QR-Code-Reader-App

- Öffnen Sie die App und klicken auf „+“ → Gerät hinzufügen



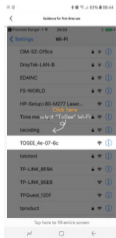
- Klicken Sie auf „Das rote Licht blinkt“ sobald die LED-Anzeige rot blinkt



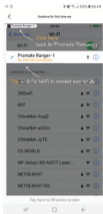
- Klicken Sie auf „Gehen Sie zu Einrichten, um das Gerät zu verbinden“



- Wählen Sie den Wifi-Hotspot-Namen, der aussieht wie "TOSEE\_4e-07-6c"



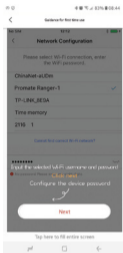
- Warten Sie auf die erfolgreiche Verbindung des Wifi-Hotspots und klicken Sie dann auf die Zurück-Taste, um wieder auf die App zu gelangen



- Klicken Sie die Schaltfläche „Weiter“



- Geben Sie das Wifi-Passwort ein



- Konfigurieren Sie das Gerätemanagement-Passwort und klicken auf „Weiter“



- Benennen Sie das Gerät (z.B. Eingangstür, Wohnzimmer usw.) und klicken auf die „Fertigstellen“-Taste zum Beenden der Einstellung



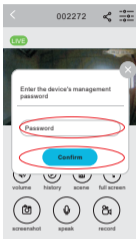
#### 4. Die App mit anderen Benutzern teilen:

- Öffnen Sie die App und klicken auf die Schaltfläche „Teilen“

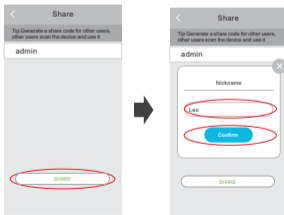




- Geben Sie das Gerätemanagement-Passwort ein und klicken auf „Weiter“



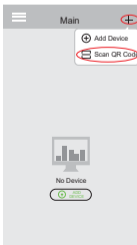
- Klicken Sie auf „Teilen“, benennen den neuen Benutzer und klicken auf „Bestätigen“



- Die Anwendung erzeugt einen QR-Code zum Teilen

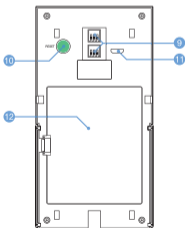
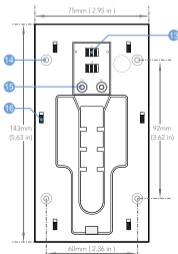
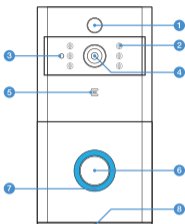


- Der neue Benutzer muss die App aus dem Apple Store oder Google PlayStore herunterladen → die Schaltfläche „+“ und „QR Code scannen“ drücken



## Aparência e descrição do Interface

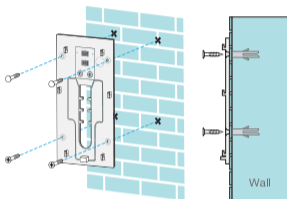
1. Sensor de movimento
2. LED de infravermelhos
3. Light Sensor de luz
4. Câmera HD de 166°
5. Microfone
6. Botão multifunções
7. Indicador LED
8. Altifalante
9. Entrada de alimentação CA 8V ~ 24V
10. Botão de restauro
11. Entrada de carregamento micro USB
12. Compartimento da bateria
13. Contactos de energia
14. Furos de parafusos
15. Terminais de fio
16. Gancho de montagem



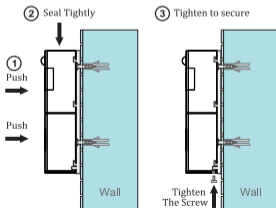
**Instruções de utilização:**

**1. Instalação do suporte:**

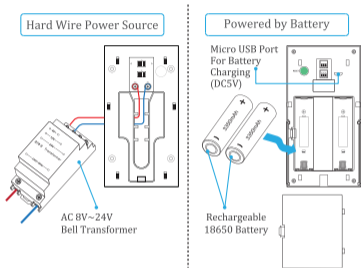
- Aparafuse a Placa de Montagem na parede como mostrado abaixo:



- Coloque a Ranger-1 na Placa de Montagem como mostrado abaixo:



## 2. Instalação do fornecimento de energia:



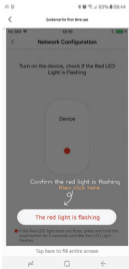
## 3. Utilização da aplicação Promate Ranger-1

- Instale a aplicação no seu dispositivo Android ou iOS lendo o código QR com uma aplicação de leitura de códigos QR

- Abra a aplicação e clique no “+” → Adicionar dispositivo



- Clique em “A luz vermelha está a piscar” quando vir o indicador LED a piscar em vermelho.



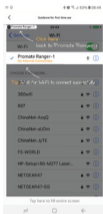
- Clique em “Configurar o dispositivo conectado”



- Escolha o nome de ponto de acesso Wi-Fi que será semelhante a “TOSEE\_4e-07-6c”



- Aguarde que a conexão ao ponto de acesso de Wi-Fi fique concluída com êxito e, depois, clique no botão retroceder para regressar à aplicação

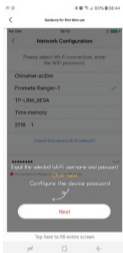


- Clique no botão “Seguinte”





- Introduza a palavra-passe da rede Wi-Fi



- Defina a palavra-passe de gestão do dispositivo e clique em “Seguinte”

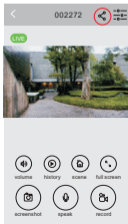


- Atribua um nome ao dispositivo (por exemplo: Porta de entrada, Sala de estar, etc.) e clique no botão “Concluída” para terminar a configuração

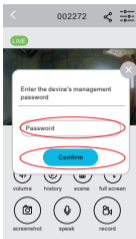


#### 4. Partilhar a aplicação com outros utilizadores:

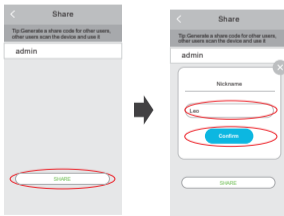
- Aceda à aplicação e clique no botão de partilha



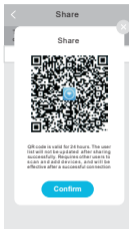
- Introduza a palavra-passe de gestão do dispositivo e clique em “Prosseguir”



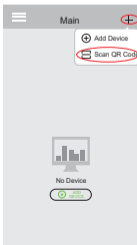
- Clique em Partilhar, atribua um nome ao novo utilizador e clique em “Confirmar”



- A aplicação gera um código QR de partilha

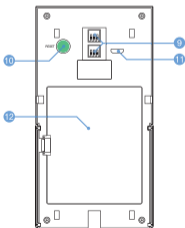
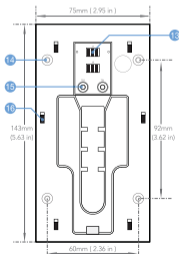
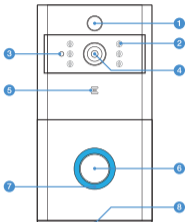


- O novo utilizador tem de descarregar a aplicação na Apple Store ou na Google PlayStore → Clicar no botão the “+” e clicar em “Ler código QR”



## Descrierea aspectului și interfeței

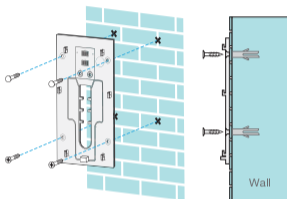
1. Senzor de mișcare
2. LED infraroșu
3. Senzor lumină
4. Cameră HD 166°
5. Microfon
6. Buton multifuncțional
7. Indicator LED
8. Difuzor
9. Intraie alimentare AC 8V ~ 24V
10. Buton de resetare
11. Port de încărcare micro-USB
12. Compartiment pentru baterie
13. Contacte pentru alimentare
14. Găuri pentru șuruburi
15. Bornele firului
16. Cârlig de fixare



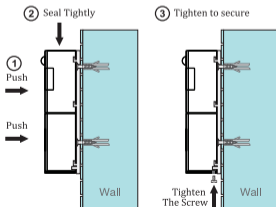
## Instrucțiuni de utilizare: Instrucțiuni de utilizare:

### 1. Instalarea consolei:

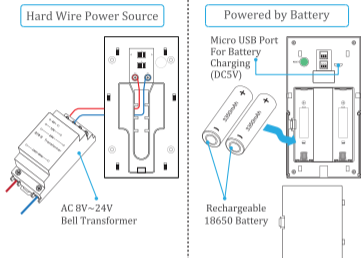
- Înșurubați plăcuța de fixare pe perete, așa cum este indicat mai jos:



- Fixați Ranger-1 pe plăcuța de fixare așa cum este indicat mai jos



## 2. Instalarea alimentării



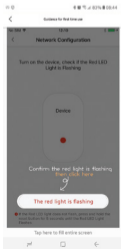
## 3. Utilizarea aplicației Promate Ranger-1

- Descărcati aplicația pentru dispozitivul dvs. Android sau iOS scanând codul QR de mai jos, folosind o aplicație de citire coduri QR.

- Deschideți aplicația și faceți click pe „+” → Add Device (Adăugați dispozitiv)



- Faceți clic pe „The Red Light Is Flashing” (Lumina roșie luminează intermitent) când vedeți indicatorul LED luminând intermitent roșu.

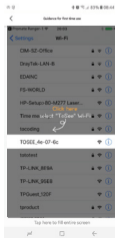




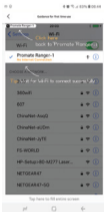
- Faceți clic pe „Go to setup to connect device”  
(Mergeți la configurare pentru a conecta dispozitivul)



- Alegeți numele hotspotului WiFi care arată ca  
“TOSEE\_4e-07-6c”



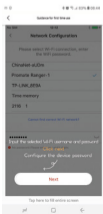
- Așteptați ca hotspotul WiFi să se conecteze cu succes și apoi faceți clic pe butonul din spate pentru a vă întoarce la aplicație



- Faceți clic pe butonul „Next” (Continuare)



- Introduceți parola WiFi



- Configurați parola pentru gestionarea dispozitivului și faceți clic pe „Next” (Continuare)



- Numiți dispozitivul (De ex. ușa din față, sufragerie etc.) și faceți clic pe butonul „Complete” (Finalizare) pentru a finaliza configurarea.

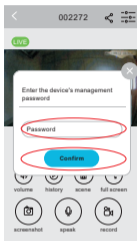


#### 4. Distribuirea aplicației cu alți utilizatori:

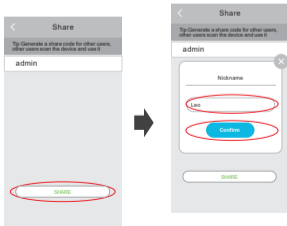
- Intrați în aplicație și faceți clic pe butonul de distribuire



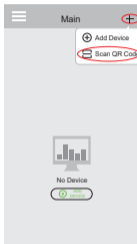
- Introduceți parola pentru gestionarea dispozitivului și faceți clic pe „Continue” (Continuare)



- Faceți clic pe Share (Distribuire), dați un nume noului utilizator și faceți clic pe „Confirm” (Confirmare)



- Aplicația generează un cod QR de distribuire
- Noul utilizator trebuie să descarce aplicația din Apple Store sau Google PlayStore → Faceți clic pe butonul „+” și faceți clic pe „Scan QR Code” (Scațați codul QR)



## RECICLAREA ECHIPAMENTELOR ELECTRICE SI ELECTRONICE UZATE

Acest simbol prezent pe produs sau pe ambalaj semnifică faptul că produsul respectiv nu trebuie tratat ca un deșeu menajer obișnuit. Nu aruncați aparatul la gunoierul menajer la sfârșitul duratei de funcționare, ci duceți-l la un centru de colectare autorizat pentru reciclare. În acest fel veți ajuta la protejarea mediului înconjurător și veți putea împiedica eventualele consecințe negative pe care le-ar avea asupra mediului și sănătății umane. Pentru a afla adresa celui mai apropiat centru de colectare: Contactați autoritățile locale; Accesați pagina de internet: [www.mmediu.ro](http://www.mmediu.ro) Solicitați informații suplimentare la magazinul de unde ați achiziționat produsul



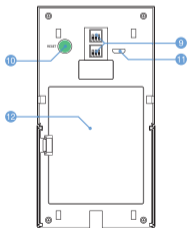
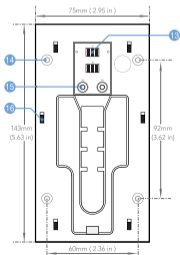
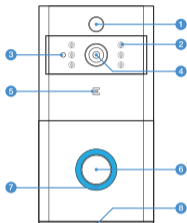
Acest aparat este conform cu standardele Europene de securitate și conformitate electromagnetică

## RoHS

Acest produs nu conține materiale periculoase pentru mediul înconjurător (plumb, mercur, cadmiu, crom hexavalent și agenți inflamabili bromurați: PBB și PBDE).

## Внешний вид и описание интерфейса

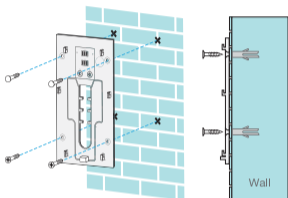
1. Датчик движения
2. Инфракрасный светодиод
3. Световой датчик
4. Камера с высоким разрешением 166°
5. Микрофон
6. Многофункциональная кнопка
7. Светодиодный индикатор
8. Динамик
9. Вход питания переменного тока 8В ~ 24В
10. Кнопка сброса
11. Входной порт для зарядки микро-USB
12. Батарейный отсек
13. Контакты питания
14. Отверстия для винтов
15. Клеммы проводов
16. Монтажная скоба



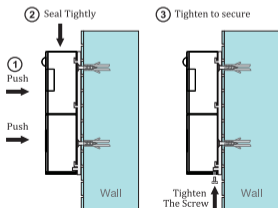
## Инструкция по эксплуатации

### 1. Установка консоли

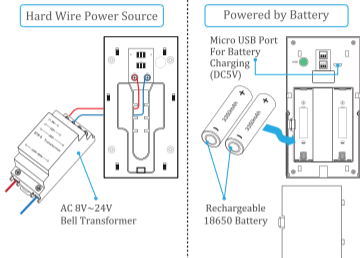
- Привинтите монтажную плату к стене, как показано ниже:



- Смонтируйте устройство Ranger-1 на монтажной плате, как показано ниже:



## 2. Подводка электропитания:



## 3. Практическое применение Ranger-1 от Promate

- Загрузите приложение для своего устройства Android или iOS, просканировав приведенный ниже двумерный штрихкод (QR-код) при помощи приложения для чтения QR-кода.



- Откройте приложение и нажмите на кнопку «+» → Добавить устройство.



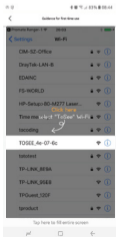
- Нажмите на надпись «Вспыхивает красный свет», когда увидите, что светодиодный индикатор загорелся красным светом.



- Нажмите на надпись «Перейти к настройке для подключения устройства».



- Выберите имя точки доступа Wi-Fi, которое выглядит как "TOSEE\_4e-07-6c"



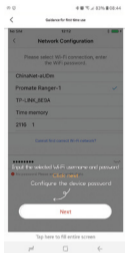
- Подождите, пока точка доступа Wi-Fi будет успешно подключена, а затем нажмите на кнопку «Назад», чтобы вернуться в приложение.



- Нажмите на кнопку «Далее».



- Введите пароль Wifi.



- Настройте пароль управления устройством и нажмите «Далее».



- Назовите устройство (например, «Входная дверь», «Гостиная» и т. д.) и нажмите на кнопку «Завершить», чтобы завершить настройку.

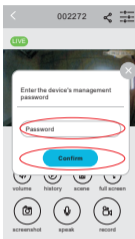


#### 4. Совместное использование приложения с другими пользователями:

- Войдите в приложение и нажмите на кнопку совместного доступа.



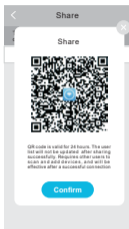
- Введите пароль управления устройством и нажмите «Далее».



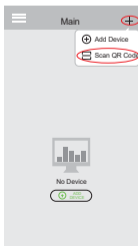
- Нажмите «Поделиться», назовите нового пользователя и нажмите «Подтвердить».



- Приложение генерирует код обмена QR.

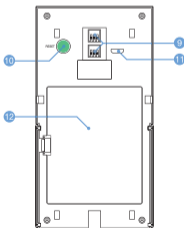
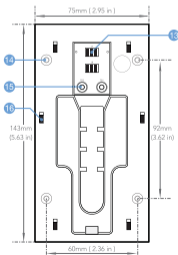
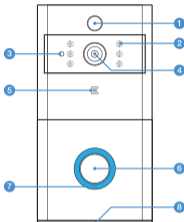


- Новый пользователь должен загрузить приложение из Apple Store или Google PlayStore. → Нажмите на кнопку «+», а затем – «Сканировать QR-код».



## Görünüm ve Arayüz Açıklaması

1. Hareket Sensörü
2. Kızılötesi LED
3. Işık Sensörü
4. 166° HD Kamera
5. Mikrofon
6. Çok İşlevli Düğme
7. LED Göstergesi
8. Hoparlör
9. AC 8V ~ 24V Güç Girişi
10. Reset Düğmesi
11. Mikro-USB Şarj Girişi
12. Pil Yuvası
13. Güç Kontakları
14. Vida Delikleri
15. Kablo Terminalleri
16. Montaj Boşluğu

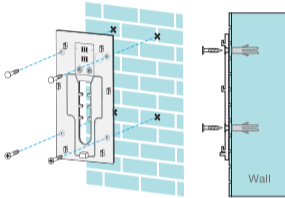




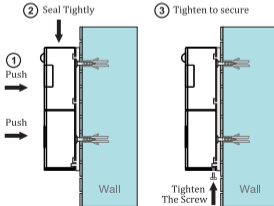
## İşletim Talimatları:

### 1. Askı Kurulumu:

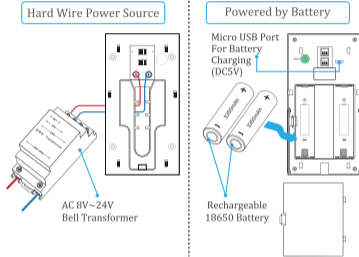
- Montaj Plakasını aşağıda gösterilen şekilde duvara vidalayın:



- Ranger-1'i aşağıdaki şekilde Montaj Plakasına monte edin



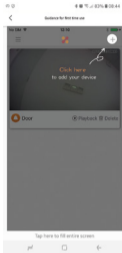
## 2. Güç Kaynağı Kurulumu:



## 3. Promate Ranger-1 Uygulamanın Kullanımı

- QR kodu okuyucu uygulamasını kullanarak aşağıdaki QR kodunu tarayarak Android veya iOS cihazınız için uygulamayı indirin

- Uygulamayı açın ve “+” → Cihaz Ekle düğmesine tıklayın



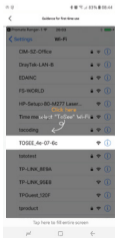
- LED göstergesinin Kırmızı yanıp söndüğünü gördüğünüzde “Kırmızı Işık Yanıp Sönüyor” ögesine tıklayın



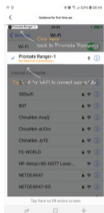
- “Cihaz bağlantısını kur” ögesine tıklayın



- “TOSEE\_4e-07-6c” gibi görünen Wifi bağlantı noktası adını girin



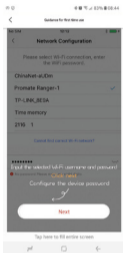
- Wifi bağlantı noktasının başarılı bir şekilde bağlanmasını bekleyin ve sonra uygulamaya geri dönmek için geri düğmesine tıklayın



- “Sonraki ” düğmesine tıklayın



- Wifi şifresini girin



- Cihaz yönetim şifresini yapılandırın ve “Sonraki” düğmesine tıklayın

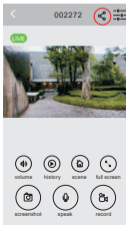


- Cihaza isim verin (Ör. Ön Kapı, Oturma Odası, vs.) ve kurulumu bitirmek için “Tamamla” düğmesine tıklayın

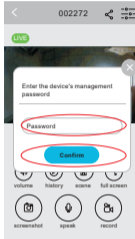


#### 4.Uygulamayı Başka Kullanıcılarla Paylaşma:

- Uygulamaya girin ve paylaş düğmesine tıklayın



- Cihaz yönetim şifresini girin ve “Devam” düğmesine tıklayın



- Paylaş düğmesine tıklayın, yeni kullanıcıya isim verin ve “Onayla” düğmesine tıklayın

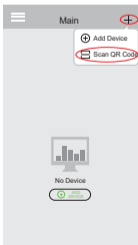




- Uygulama bir QR paylaşım kodu oluşturur

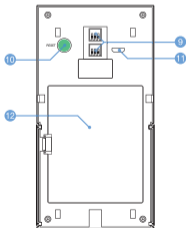
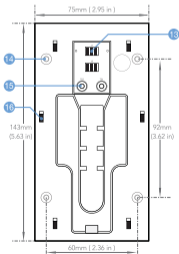
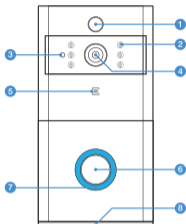


- Yeni kullanıcının uygulamayı Apple Store veya Google PlayStore'dan indirmesi gerekir → "+" düğmesine tıklayın ve "QR Kodunu Tara" düğmesine tıklayın



## 外观和接口说明

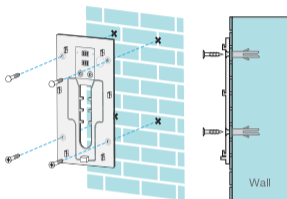
1. 运动传感器
2. 红外LED
3. 光传感器
4. 166° 高清摄像头
5. 麦克风
6. 多功能按钮
7. LED指示灯
8. 扬声器
9. 交流电8伏~24伏电源输入
10. 重置按钮
11. Micro-USB 充电输入
12. 电池盒
13. 电源触点
14. 螺丝孔
15. 导线端子
16. 安装钩



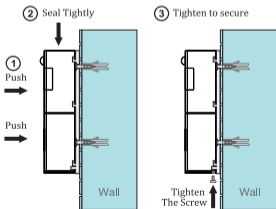
### 操作说明:

#### 1. 支架安装:

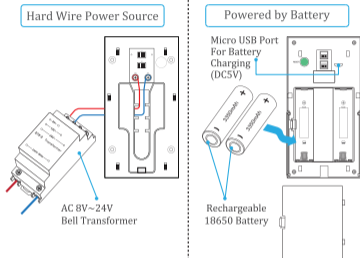
- 如下所示将安装板拧到墙上:



- 如下所示将Ranger-1安装到安装板上



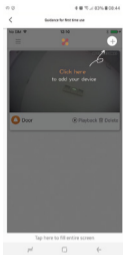
## 2. 电源安装:



## 3. Promate Ranger-1应用程序的使用

- 通过使用QR码阅读器应用程序扫描下面的QR码，  
下载Android或iOS设备的应用程序

- 打开应用程序并点击 “+” → 添加设备



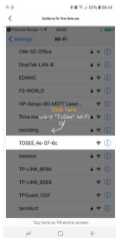
- 当看到LED指示灯闪红色时，单击“红灯正在闪烁”



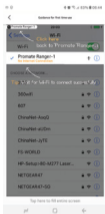
- 点击“转至设置以连接设备”



- 选择类似“TOSEE\_4e-07-6c”的Wifi热点名称



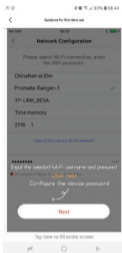
- 等待Wifi热点连接成功，然后单击返回按钮回到应用程序



- 单击“下一步”按钮



- 输入Wifi密码



- 配置设备管理密码，然后单击“下一步”





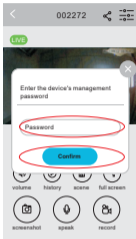
- 为设备起名字（例如前门，客厅等）并点击“完成”按钮完成设置



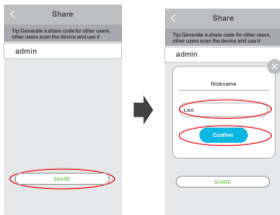
4. 与其他用户共享应用程序：
- 进入应用程序并点击共享按钮



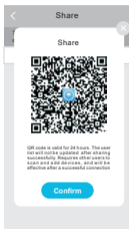
- 输入设备管理密码并点击“继续”



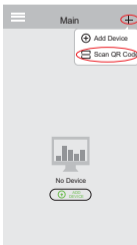
- 点击共享，为新用户起名字并点击“确认”



- 应用程序会生成QR共享码



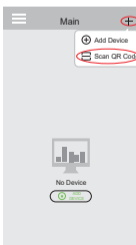
- 新用户需要从Apple Store或Google PlayStore下载应用程序  
→ 点击“+”按钮并点击“扫描QR码”



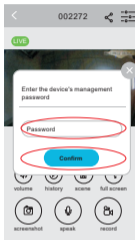
- برنامه یک کد اشتراک‌گذاری QR ایجاد می‌کند



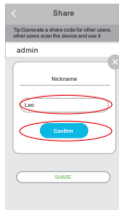
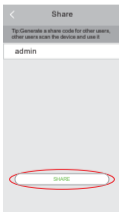
- کاربر جدید باید برنامه را از Google PlayStore یا Apple Store دانلود کند → روی دکمه + و روی Scan QR Code (اسکن بارکد) کلیک کنید



- رمز مدیریت دستگاه را وارد کنید و روی «Continue» (ادامه) کلیک کنید



- روی Share (اشتراک‌گذاری) کلیک کنید و کاربر جدید را نامگذاری کنید و روی Confirm (تأیید) کلیک کنید



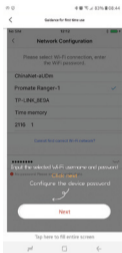
- دستگاه را نامگذاری کنید (مثلاً درب جلو، اتاق نشیمن، و غیره) و روی دکمه Complete (تکمیل) برای پایان نصب کلیک کنید



4. اشتراک‌گذاری برنامه با سایر کاربران:  
• وارد برنامه شوید و روی دکمه اشتراک‌گذاری کلیک کنید



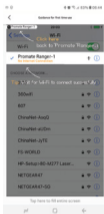
• رمز وای فای را وارد کنید



• رمز مدیریت دستگاه را پیکربندی کنید و روی «بعدی» کلیک کنید



- منتظر بمانید نقطه اتصال وای فای با موفقیت وصل شود و سپس روی دکمه بازگشت کلیک کنید تا به برنامه برگردید



- روی دکمه "Next" (بعدی) کلیک کنید

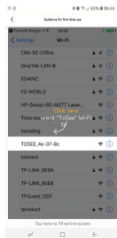




- روی «رفتن به تنظیمات برای اتصال دستگاه» کلیک کنید



- نام نقطه اتصال وای فای را که شبیه «TOSEE\_4e-07-6c» است انتخاب کنید



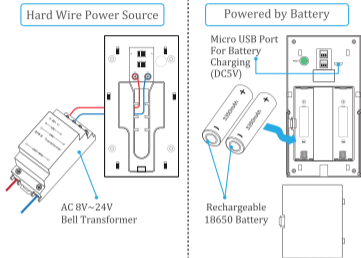
- برنامه را باز کنید و روی + افزودن دستگاه کلیک کنید



- وقتی دیدید نشانگر LED به رنگ قرمز چشمک می‌زند روی «چراغ قرمز چشمک‌زن» کلیک کنید



2. نصب منبع تغذیه:



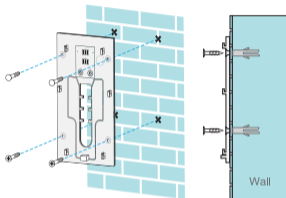
3. استفاده از برنامه Promate Ranger-1

- با اسکن کردن کد QR زیر توسط یک برنامه بارکدخوان برنامه را برای دستگا ه Android یا iOS خود دانلود کنید.

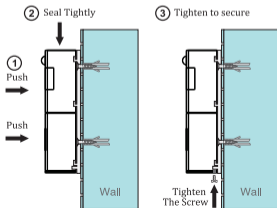
دستورالعمل های عملیات:

1. نصب پایه:

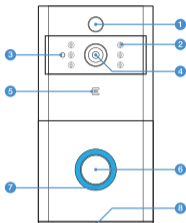
• صفحه نصب را روی دیوار طبق شکل زیر پیچ کنید:



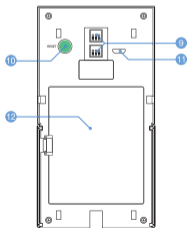
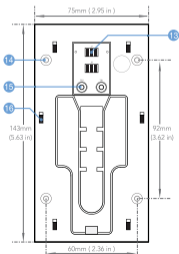
• Ranger-1 را مانند شکل زیر روی صفحه نصب سوار کنید



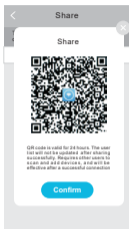
ظاهر و شرح رابط



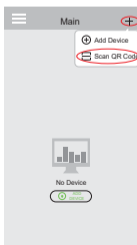
1. حسگر جاذبه
2. LED مادون قرمز
3. سنسور نور
4. دوربین 166° درجه HD
5. میکروفن
6. دکمه چندکاره
7. نشانگر ال ای دی
8. اسپیکر
9. ورودی برق متناوب 8 ولت تا 24 ولت
10. دکمه بازنشانی
11. درگاه شارژ Micro USB
12. محفظه باتری
13. اتصالات برق
14. روزنه های پیچ
15. پایانه های سیم
16. حلقه نصب



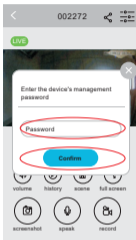
- يقوم التطبيق بإنشاء رمز QR لمشاركته مع المستخدم الجديد



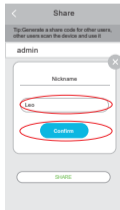
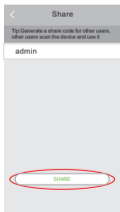
- على المستخدم الجديد تنزيل التطبيق من Apple Store أو Google PlayStore → الضغط على زر "+" ثم على "Scan QR Code"



• أدخل كلمة مرور إدارة الجهاز واضغط على "Continue"



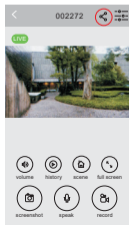
• اضغط على Share واختار اسماً للمستخدم الجديد ثم اضغط على "Confirm"



- اختر اسماً للجهاز (على سبيل المثال: الباب الأمامي، غرفة المعيشة...الخ)  
واضغط على زر "Complete" لإتمام الإعداد

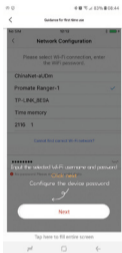


4. مشاركة التطبيق مع مستخدمين آخرين:  
• ادخل إلى التطبيق واضغط على زر المشاركة





## • أدخل كلمة مرور Wifi



## • قم بتهيئة كلمة مرور إدارة الجهاز واضغط "Next"



- انتظر حتى يتم الاتصال بنقطة اتصال Wifi بنجاح، ثم اضغط على زر الرجوع للرجوع إلى التطبيق



- اضغط على زر "Next"



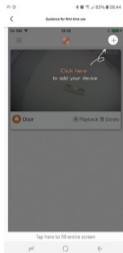
• اضغط على "Go to setup to connect device"



• اختر اسم نقطة اتصال Wifi التي يشبه اسمها "TOSEE\_4e-07-6c"



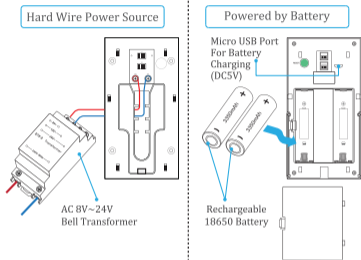
• افتح التطبيق واضغط على "+" → Add Device



• اضغط على على "The Red Light Is Flashing" عندما يبدأ المؤشر الضوئي بالوميض باللون الأحمر



## 2. تركيب وحدة مصدر الطاقة:

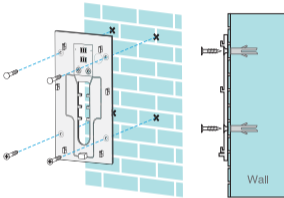


## 3. استخدام تطبيق Promate Ranger-1

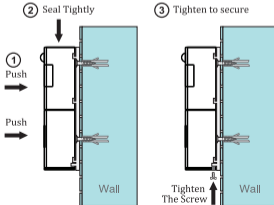
- امسح أحد رمزي الاستجابة السريعة أدناه الموافق لنوع جهازك باستخدام تطبيق قراءة رموز QR لتنزيل تطبيق Android أو iOS

تعليمات التشغيل:  
1. تركيب الدعامة:

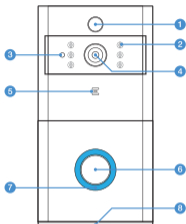
• ثبت دعامة الحامل على الحائط بالبراغي كما هو موضح أدناه:



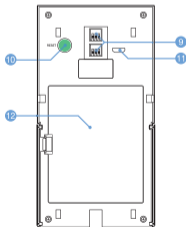
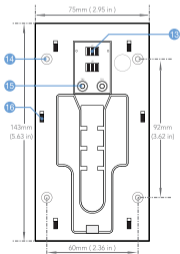
• ركب Ranger-1 على الحامل على النحو التالي



## وصف الشكل والواجهة



1. مستشعر الحركة
2. مؤشر الأشعة تحت الحمراء
3. مستشعر الضوء
4. كاميرا 166° HD
5. ميكروفون
6. الزر متعدد الوظائف
7. المؤشر الضوئي
8. مكبر الصوت
9. مدخل طاقة AC 8V ~ 24V
10. زر إعادة الضبط
11. مدخل شحن مايكرو USB
12. موضع البطارية
13. موصلات الطاقة
14. فتحات البراغي
15. مستقبلات أسلاك
16. خطاف تثبيت





[www.promate.net](http://www.promate.net)