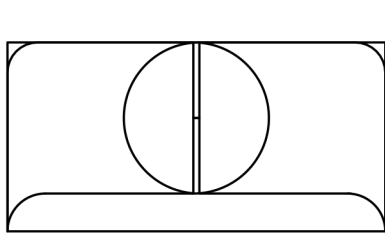




Oh Josephine  
knits & knots

# Large basket insert



The outside of your basket inserts should look like this when folded.

When printed correctly this square should measure 10cm x 10cm. Please check before cutting.

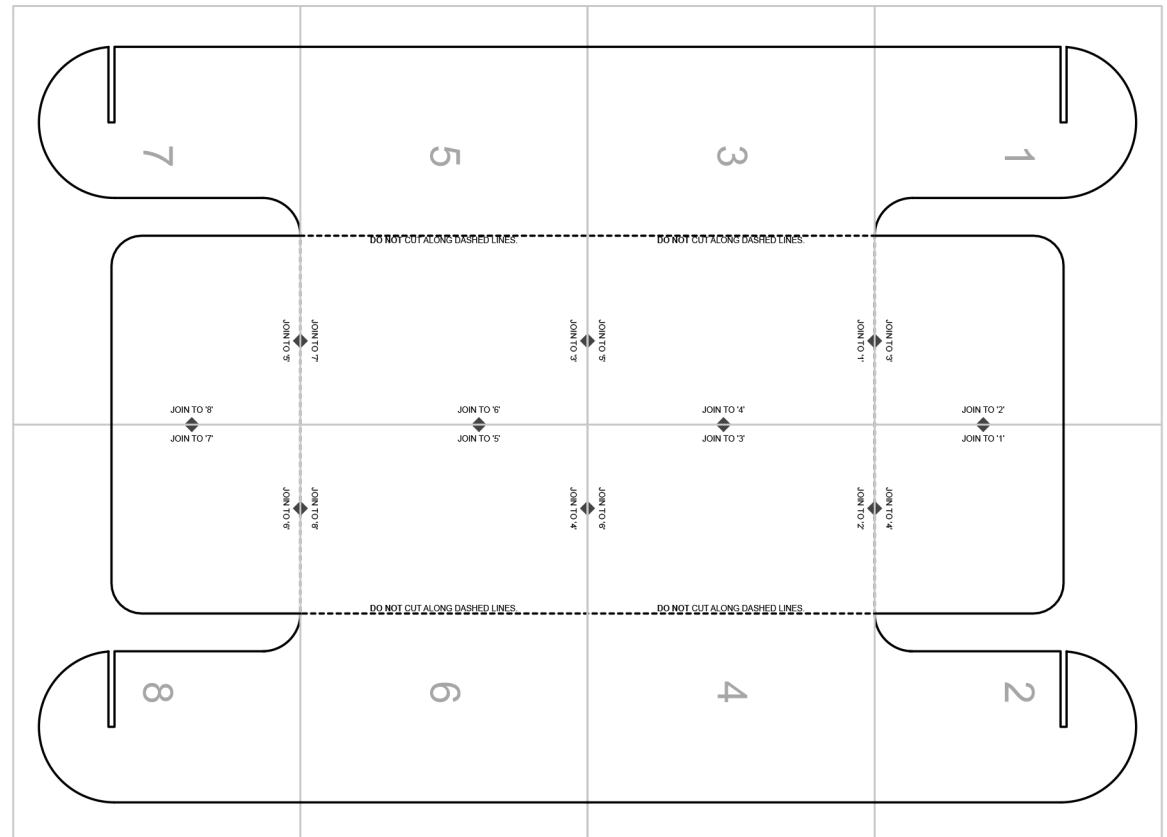
When printed correctly this square should measure 3" x 3". Please check before cutting.

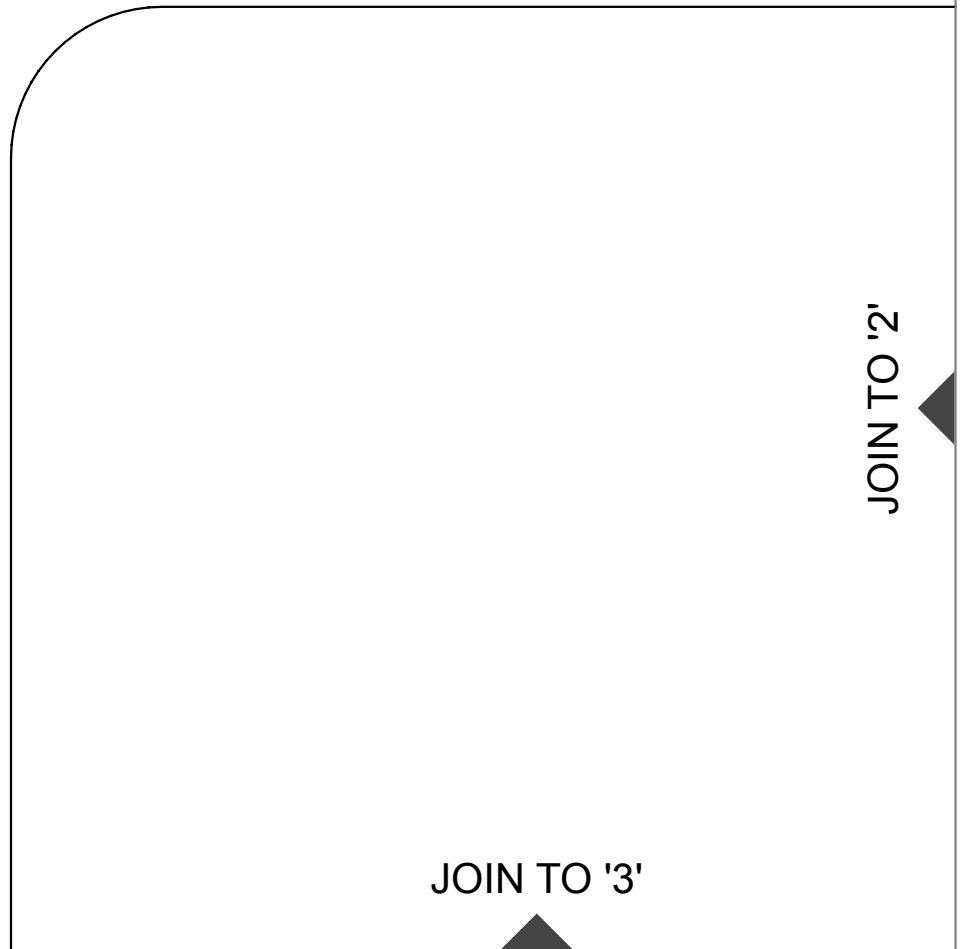
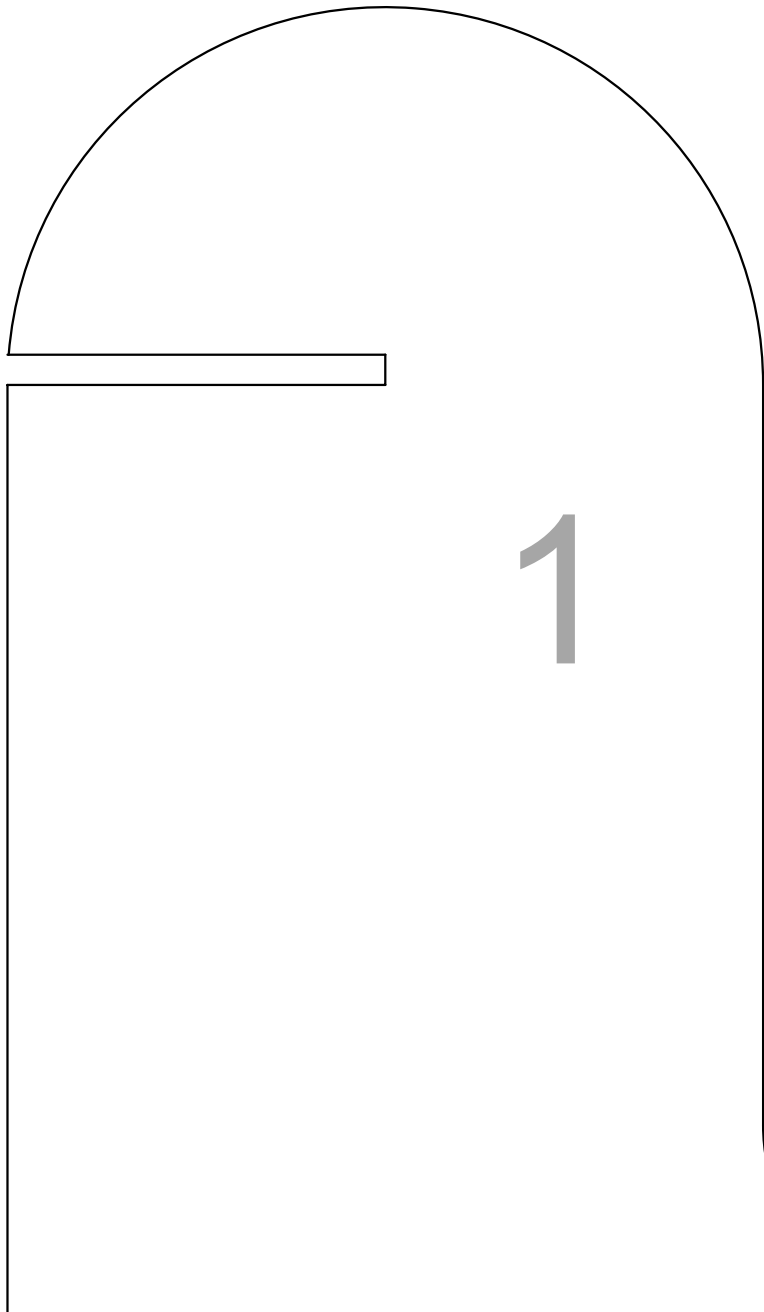
## Instructions

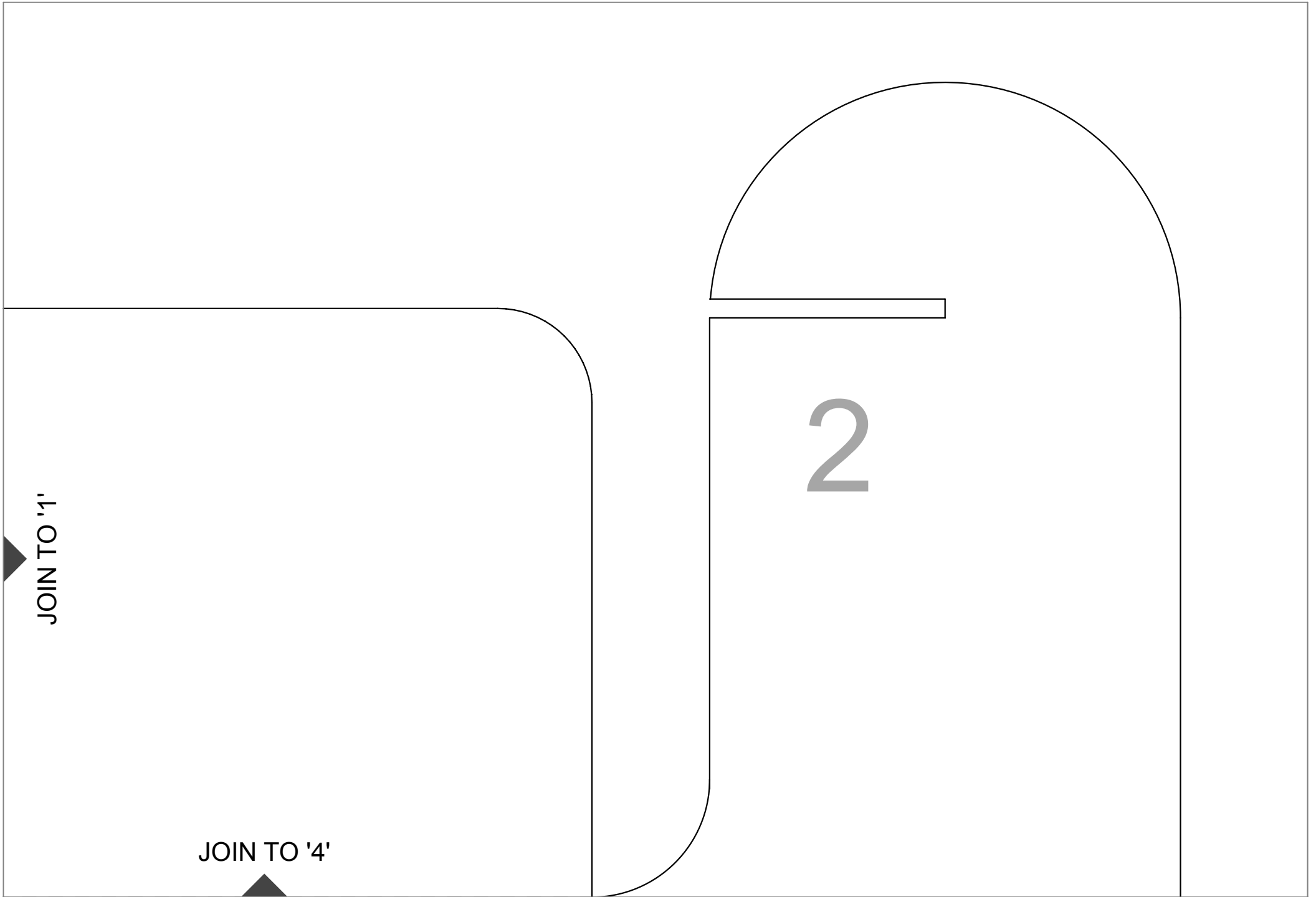
1. Print pattern pieces on A4 paper and check size.
2. Tape pages together as noted on black arrows.
3. Lay out and trace pattern onto a large sheet of washable paper (50cm x 72.6cm)
4. Cut out along outline.
5. Fold panels along dashed lines.
6. Slots of piece 1 & 2 fit together, slots of piece 7 & 8 together to form a circle. Note: Panels 3 & 4 line the inside. Circles are on the outside.

**Washable paper** looks and feels like leather but sews, cuts and washes like fabric. It can be purchased from many Etsy sellers. In Australia, we have sourced washable paper from **makeMonsterCo** on Etsy.

**Pattern overall dimensions:**  
Main piece: 50cm x 72.6cm







JOIN TO '1'

2

JOIN TO '4'

3

DO NOT CUT ALONG DASHED LINES.

JOIN TO '1'

JOIN TO '5'

JOIN TO '4'

JOIN TO '2'

JOIN TO '3'

JOIN TO '6'

DO NOT CUT ALONG DASHED LINES.

4

5

DO NOT CUT ALONG DASHED LINES.

JOIN TO '3'

JOIN TO '7'

JOIN TO '6'

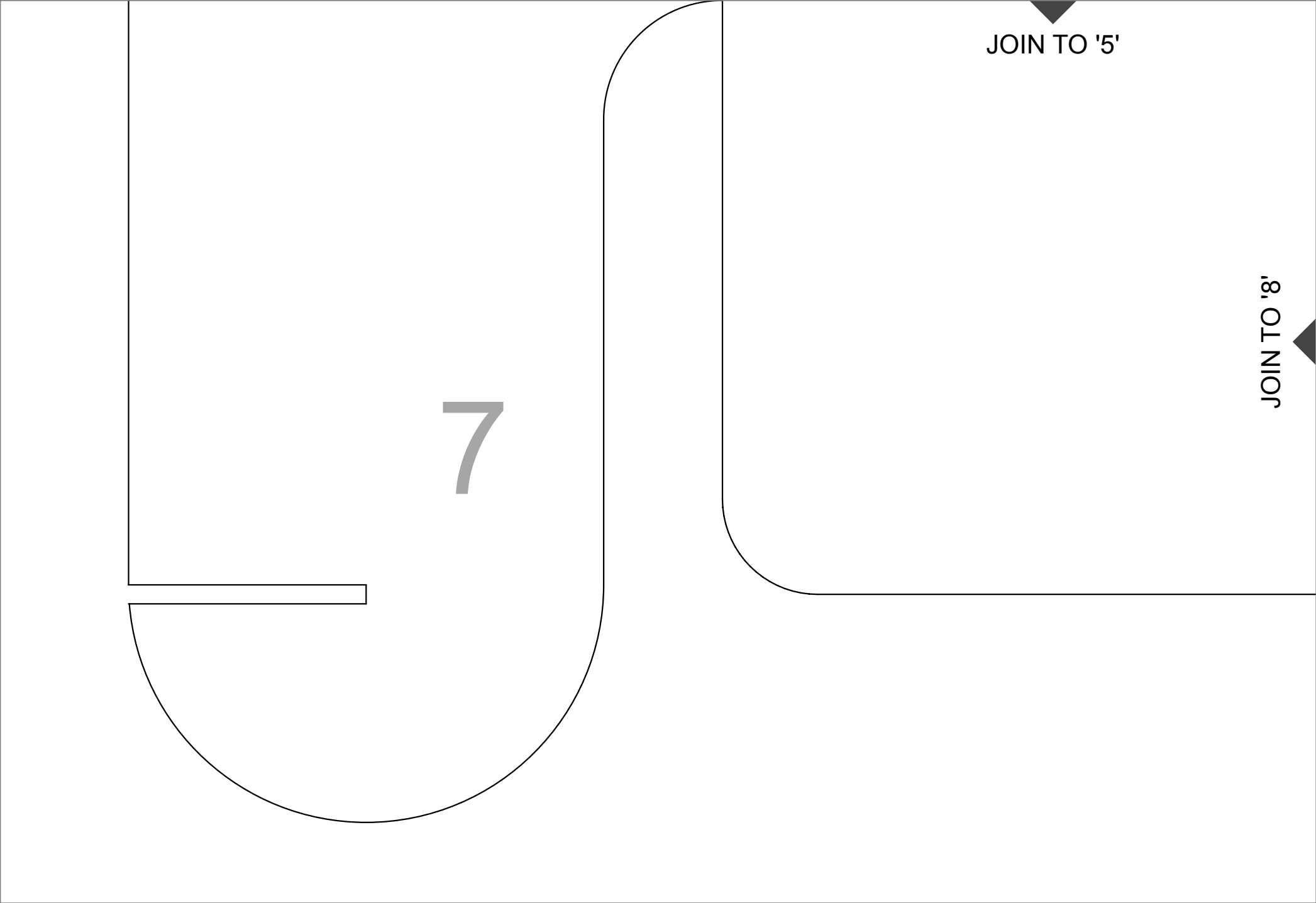
JOIN TO '4'

JOIN TO '5'

DO NOT CUT ALONG DASHED LINES.

6

JOIN TO '8'



JOIN TO '5'

JOIN TO '8'



JOIN TO '6'

JOIN TO '7'

8