

# 102C32/103C32

## Product Specification

### Specification

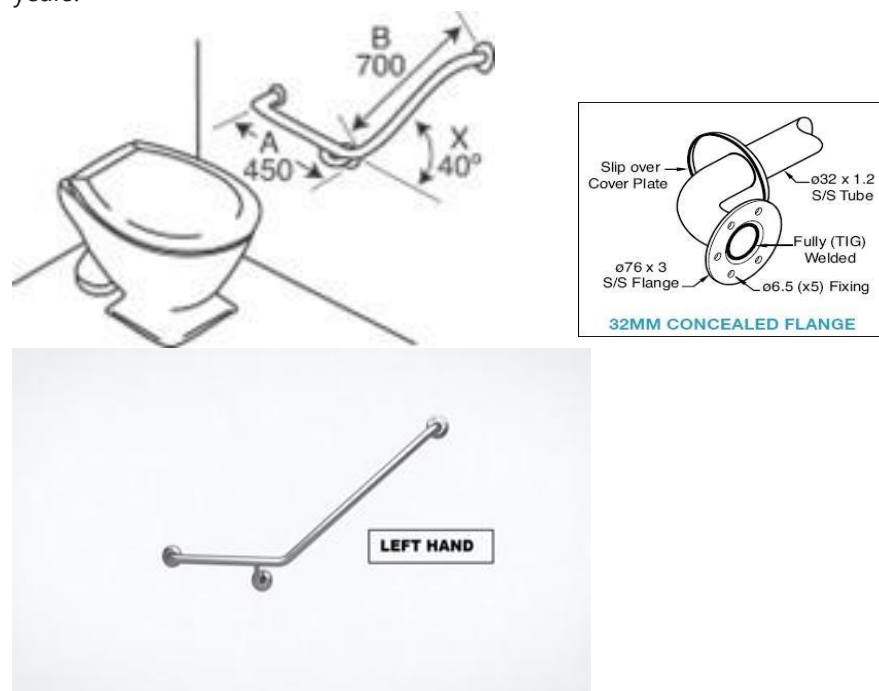
Fully welded construction in grade 304 stainless steel tube, 32mm diameter. Slip resistant Satin Stainless Steel with flange covers. Easy to install on most building surfaces designed for maximum strength and user confidence. Length 450mm x 700mm, 40 degree angled one piece WC Ambulant Grab Rail. Hand Rail Industries™ products are made to the highest standards and currently the only TGA registered Grab Rail manufacturer in Australia.

### Options

Polished stainless steel, powder coated, knurled finish. Also available in CleanSeal flange system and Exposed Fix.

### Guarantee

Hand Rail Industries™ products are fully guaranteed against faulty workmanship and material defects subject to normal wear and tear of the product for a period of 5 years.



**Left Hand Image Shown**  
103C32 Right Hand Opposite to Shown



## **HAND RAIL INDUSTRIES**

90B Northgate Drive, Thomastown. Vic. 3074  
Phone: (03) 9466 3211 | Fax: (03) 9466 3200  
Email: [sales@handrailindustries.com.au](mailto:sales@handrailindustries.com.au)  
Web: [www.handrailindustries.com.au](http://www.handrailindustries.com.au)