

Installation guide

V1(n)/V2(n) kitchen

Mercedes Marco Polo Activity/Horizon

VanEssa
mobilcamping

1. Preparation (figures with high kitchen, but technically no difference)

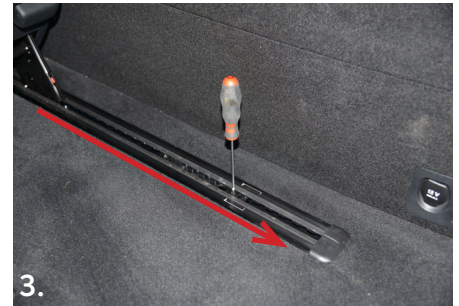
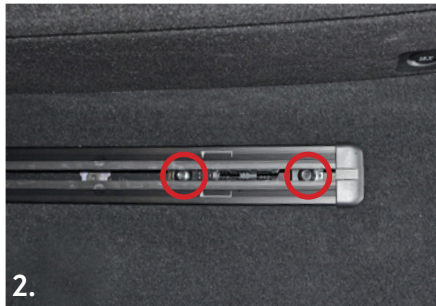
- The drawers can be taken out in order to reduce the kitchen's weight.

Note: Push the orange clips at the bottom of the drawers simultaneously and take it out (pic. 6).

- If installed, take the original bed extension board out of the vehicle (pic. 1). Flap it upwards, press the levers and take it out using two persons.

- Loosen the screws inside the exposed rails and move the slide towards the tailgate. Tighten the screws in the new position (pic. 2+3).

- Remove the right bracket of the original bed extension (pic. 4).



2. Installation & Fastening

- Put a slot nut into the outer rails 60cm from the tailgate or about 29cm from the end of the rail. Make sure they lie horizontally (pic. 7).

- Lift the kitchen into the car and push it into the booth until its front edge levels the left bracket (pic. 8).

- Fasten the screws through the holes at the backside of the kitchen into the slot nuts (pic. 9).

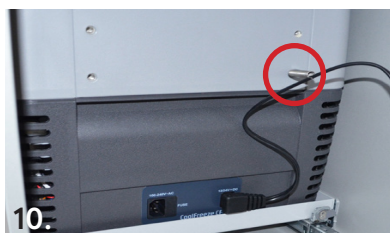


3. Electrics & Water tank

- Plug the cable from the kitchen into a 12 Volt socket. Draw the included spring with the screw in one of the threads at the back of the coolbox. The spring holds the cable up and thereby avoids the cable to be clamped (pic. 10+11).

- The opening lid must be adjacent to the fridge/freezer. The water hose has to be placed like a loop (pic. 12).

- Empty water tank and hose completely after touring to avoid frost damage, calcification, bacteria etc..



If you have any further questions please do not hesitate to contact us:
+49 (0) 8063 / 20 760 - 0 or info@vanessa-mobilcamping.de

VanEssa mobilcamping | Lauser Strasse 27 | 83620 Grosshöhenrain | Germany
Tel. +49 (0) 8063/20 760-0 | info@vanessa-mobilcamping.de