



TOP-O-MATIC®

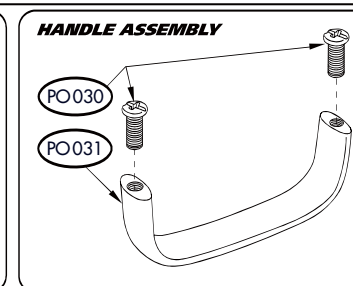
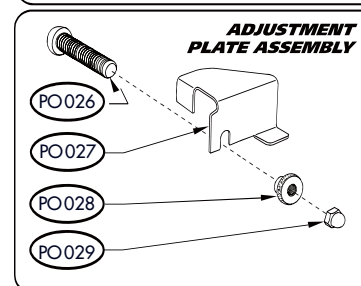
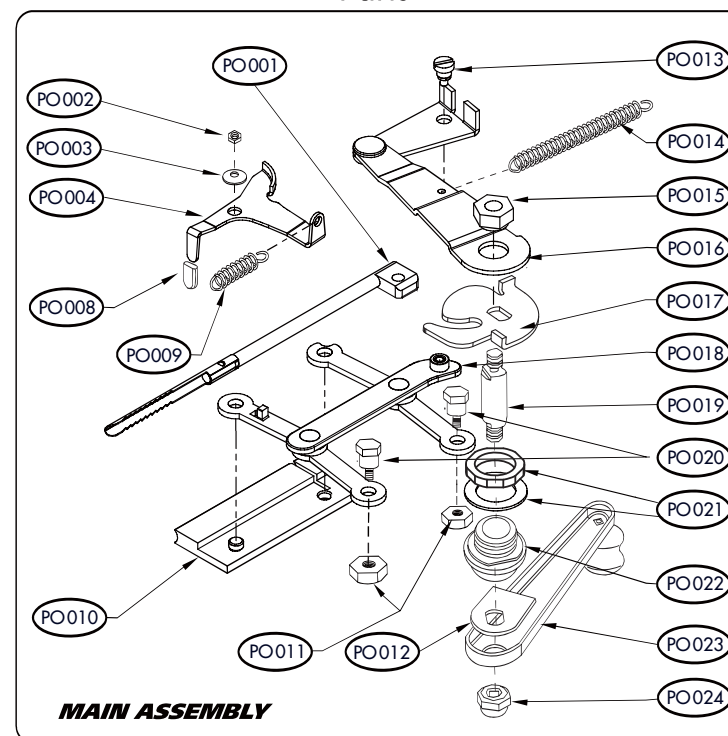
CIGARETTE MACHINE

PRICE LIST FOR PARTS ORDER FORM

TOP® TOP-O - MATIC® PARTS LIST

Qty	Part Description	Part No.	Price	Amount
	injector	PO001	US\$ 3.00	
	insert nut	PO002	US\$.30	
	small washer	PO003	US\$.20	
	tube clamp release	PO004	US\$ 1.00	
	rubber cover	PO008	US\$.20	
	short spring	PO009	US\$.40	
	tamper	PO010	US\$ 8.20	
	brass nut (2)	PO011	US\$.30	
	stud lock	PO012	US\$.40	
	flathead screw	PO013	US\$.35	
	long spring	PO014	US\$.60	
	1/4" nut	PO015	US\$.60	
	injector lever assembly	PO016	US\$ 3.00	
	cam	PO017	US\$ 1.80	
	link assembly	PO018	US\$ 2.40	
	stud	PO019	US\$ 2.50	
	hex screw (2)	PO020	US\$.40	
	lock nut and large washer	PO021	US\$.60	
	shaft bushing	PO022	US\$.95	
	crank handle assembly	PO023	US\$ 2.40	
	acorn cap nut	PO024	US\$.60	
	slip-resistant mat (not pictured)	PO025	US\$ 3.50	
	adjustment plate screw	PO026	US\$.30	
	adjustment plate	PO027	US\$ 3.00	
	tightening screw	PO028	US\$.20	
	small acorn cap nut	PO029	US\$.20	
	1/8" screw (2)	PO030	US\$.20	
	grip handle	PO031	US\$ 2.50	
subtotal				

Parts



Replacement parts for the Top-O-Matic® may become unavailable if Republic Tobacco chooses, in its sole discretion, to discontinue its inventory of such parts. Republic Tobacco is under no obligation to keep and maintain an inventory of replacement parts available for the Top-O-Matic® Product must be registered for repair and service agreement to be valid.



**YOU
MUST INCLUDE
PROOF OF AGE**
(COPY OF VALID DRIVER'S
LICENSE/LEGAL ID)
**WITH THIS
FORM!**

NOTE - WE CANNOT SHIP TO A P.O. BOX - PLEASE, NO P.O.'S

First Name

Last Name

Address

Address (cont.)

Apt./Unit#CityStateZipPhone NumberEmail

Please include **US\$7.50** for **Shipping and Handling**.

Please send your parts order and payment, along with a copy of a valid driver's license/legal id **(must show proof of age of 21 years or older)**, to the following:

TOP-O-MAT[®] REPAIR SERVICE CENTER

Republic Tobacco L.P.

2301 Ravine Way, Glenview, IL 60025

T: (855) RYO-HELP (796-4357) **F:** (847) 832-0246

E-mail: topomatic@ryoservice.com **Web:** www.ryoservice.com

Order Date: / /
month day year

Subtotal (from reverse side)**Applicable Sales Tax** (for IL residents only)

Shipping and Handling

US \$7.50

TOTAL

We accept the following payment types:

Check/Money Order



Please make check/money order payable to **Republic Tobacco L.P.**

Name

(as it appears on card)

Card Number #:

Exp. Date:

 /

Security Code:

Billing Address: ☐ same as shipping address

Address

Apt./Unit#

City

State

Zip

Signature:

month / day / year

SIGN HERE

SEE REVERSE SIDE FOR PARTS LIST