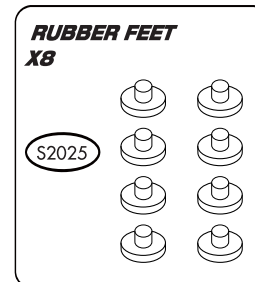
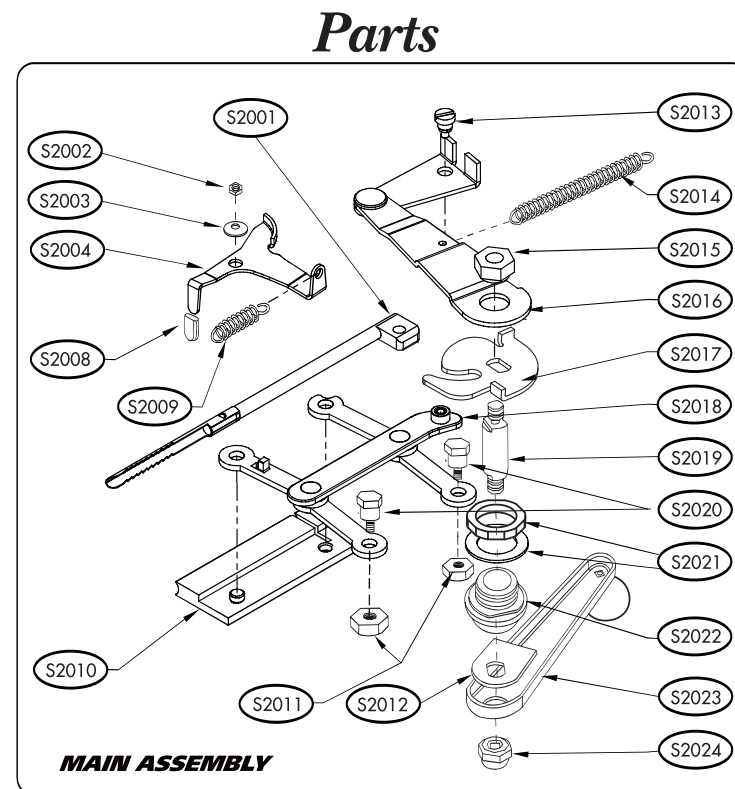




PARTS PRICE LIST

Order Form

PREMIER® SUPERMATIC® II PARTS LIST				
Qty	Part Description	Part No.	Price	Amount
	injector	S2001	US\$ 3.00	
	insert nut	S2002	US\$.30	
	small washer	S2003	US\$.20	
	tube clamp release	S2004	US\$ 1.00	
	rubber cover	S2008	US\$.20	
	short spring	S2009	US\$.40	
	tamper	S2010	US\$ 8.20	
	brass nut (2)	S2011	US\$.30	
	stud lock	S2012	US\$.40	
	flathead screw	S2013	US\$.35	
	long spring	S2014	US\$.60	
	1/4" nut	S2015	US\$.60	
	injector lever assembly	S2016	US\$ 3.00	
	cam	S2017	US\$ 1.80	
	link assembly	S2018	US\$ 2.40	
	stud	S2019	US\$ 2.50	
	hex screw (2)	S2020	US\$.40	
	lock nut and large washer	S2021	US\$.60	
	shaft bushing	S2022	US\$.95	
	crank handle assembly	S2023	US\$ 2.40	
	acorn cap nut	S2024	US\$.60	
	rubber feet (8)	S2025	US\$ 2.00	
subtotal				



Replacement parts for the Supermatic® II may become unavailable if Republic Tobacco chooses, in its sole discretion, to discontinue its inventory of such parts. Republic Tobacco is under no obligation to keep and maintain an inventory of replacement parts available for the Supermatic® II. Product must be registered for repair and service agreement to be valid.

See Reverse Side for Payment Details



PARTS PRICE LIST

Order Form

month / day / year

See Reverse Side for Parts List