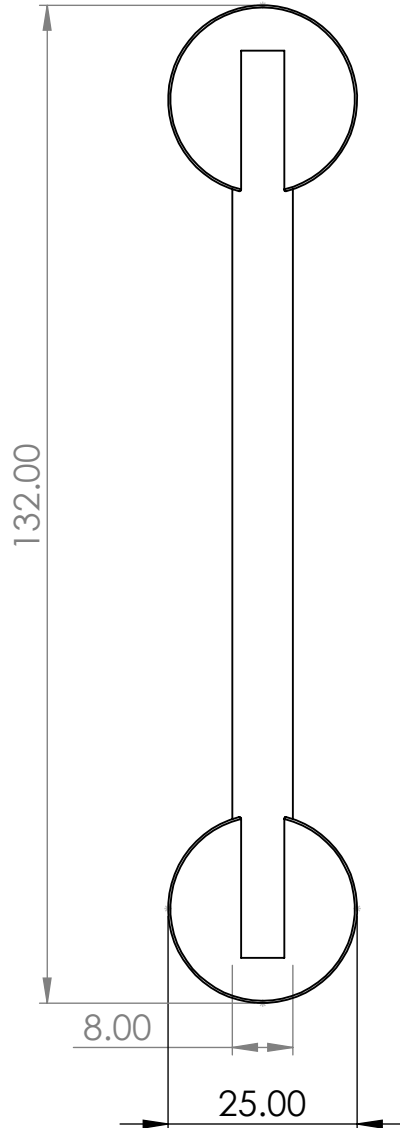


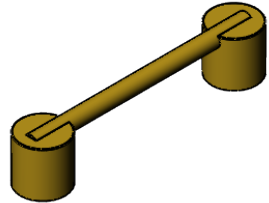
2

1

B

B



HANDLE NAME:	MYFORD - Large	SWARF
FINISH OPTIONS	<ul style="list-style-type: none"> - Naval Brass grade CZ112 untreated Fine brushed finish (with protective clear coating by request) - Polyester Powdercoated colours by special order 	 <p>Made in the UK Finishind by hand</p>
FIXINGS	<p>5mm mounting hole required.</p> <p>M5 pan head socket screw supplied with allen key.</p> <p>25mm long fixings suitable for 15-20mm thick doors</p> <p>Countersunk or longer fixings supplied by request.</p>	
CARE	<p>When left untreated, brass will develop a patination as you touch and use it. It can be restored to a bright finish again with many standard metal cleaners.</p> <p>For our coated handles, it's best to avoid using strong or undiluted cleaners. Use warm soapy water for general cleaning.</p>	



A

A

THE INFORMATION CONTAINED IN THIS DRAWING IS THE SOLE PROPERTY OF SWARF HARDWARE.

ANY REPRODUCTION IN PART OR AS A WHOLE WITHOUT THE WRITTEN PERMISSION OF SWARF HARDWARE IS PROHIBITED.

2

1