

# JS Dash 2K

USER MANUAL



## 1. Introduction to the Buttons



1. Power/Confirm
2. Page down
3. Page up
4. Interface for rear camera
5. USB port
6. MicroSD Card slot
7. Reset button
8. Indicator light
9. LCD screen
10. Lens

## 2. Button's function

### 2.1 Power Button

#### Function 1: Power on/off

When the unit is power off, press the power button to turn it on, and press it again for 3 ~ 5seconds to turn off the unit.

#### Function 2: Confirm/ Take photo

After entering the menu setting, or under replay mode, press the power button to

confirm. Under the photo mode, press the power button to take the photo.

### **Function 3: Start/Stop recording**

When the unit is recording (you will see the red flash dot), press the power button to stop recording, and press again to start recording again.

## **2.2 Page up**

### **Function 1: Entering the menu**

When the unit is on but not recording, pressing “page up” button to enter the menu.

### **Function 2: Page up**

Under the menu mode or replay mode, pressing “page up” button to page up.

### **Function 3: Lock current recorded video**

While recording, press and hold the “page up” button for 3 seconds to lock the present video and prevent it from being overwritten.

## **2.3 Page down**

### **Function 1: Turning on/off LCD screen light**

When the unit is on, press the “page down” button to turn on/off the light of the LCD screen.

### **Function 2: Page down**

Under the menu mode or replay mode, press the “page down” button to page down.

### **Function 3: Resetting wifi password to factory preset password**

When the machine is on but not recording, press the “page down” button for more than 5 seconds to reset the wifi password to the factory preset password.

**Tips: when resetting the wifi password, the LED light will flashes fast, if the password is set successfully, the wifi name and password will show on the screen for 10 seconds.**

## 2.4 Reset button


When the unit is displaying issues, please use a pin to press the reset button, and the unit will restart automatically.

### 3. Onscreen Icon and Meaning



Icon 1: Recording mode icon, means the machine is under recording mode.

Icon 2: Recording Icon, the red Icon flashes when it is recording

Icon 3: Sound recording icon, the music symbol at the side of Microphone icon means the sound recording is on, if it is off, the icon will show as: .

Icon 4: Wifi on icon, if wifi is off, the icon will show as .

Icon 5: Recording time icon.

Icon 6: Resolution of recorded video

Icon 7: Speed icon, when the GPS locate the position of the car, it shows the driving speed (Display only with units with GPS and GPS is turned on).

Icon 8: GPS Signal strength (Display only with units with GPS).

Icon 9: Loop recording time, the number “1” means the loop recording time is 1 minute.

Icon 10: EV value

Icon 11: MicroSD card detection icon, when the card is inserted, it shows as .

Icon 12: Power supply icon, when it is powered by car charger, it shows charging. When it is powered by battery, it shows the battery level.

Icon 13: Time set

Icon 14: Date set

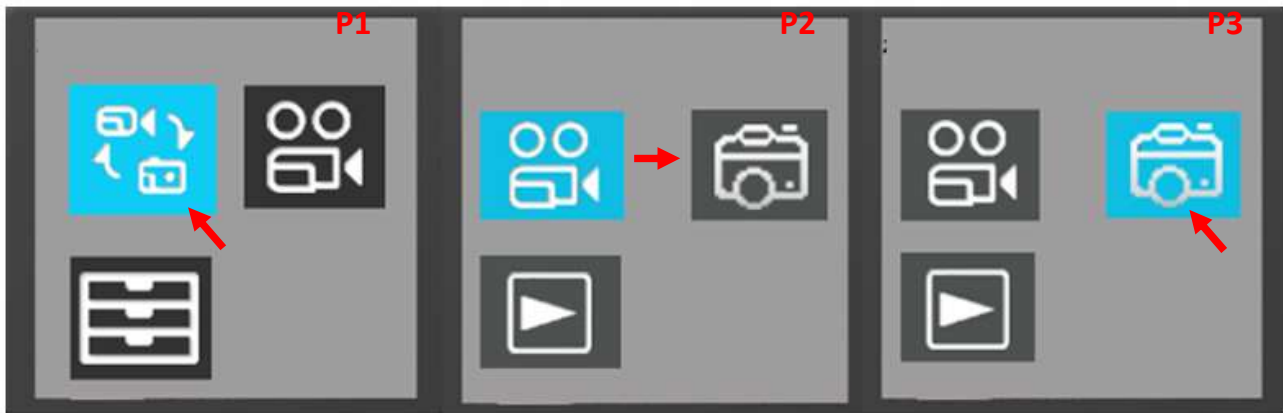
## 4. Main Functions and Features

### 4.1 Recording

Recording start automatically when the engine turns on, and the video will be saved on the memory card automatically.

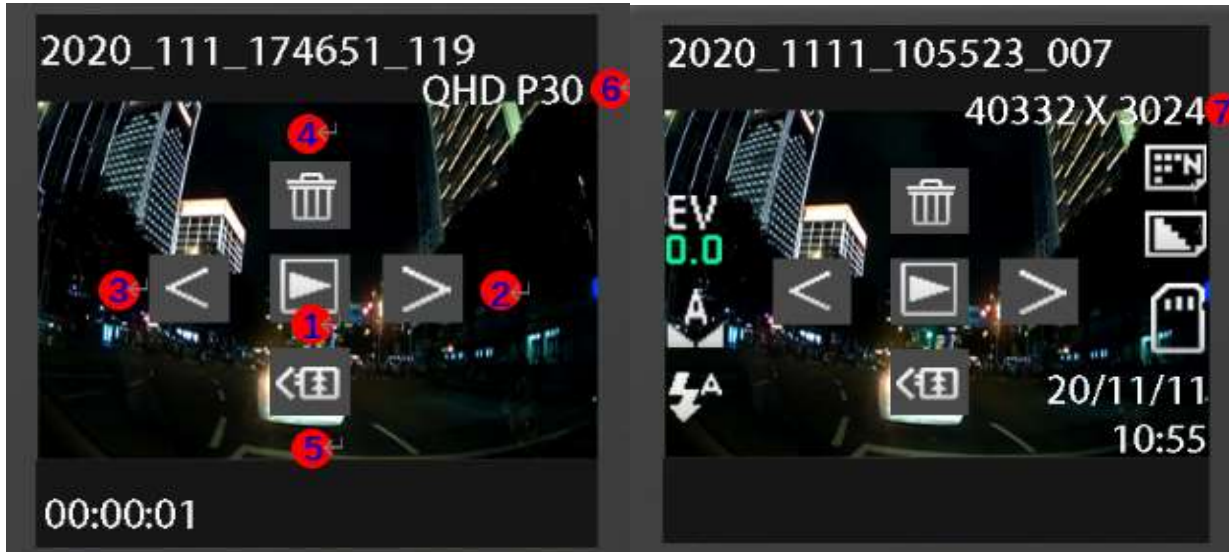
### 4.2 Photograph

When not in recording mode (no red dot on screen), press “page up” button to enter the menu, (Show as pic 1), press “power” button to confirm entering the video menu (show as pic2), press “page down” button to move to Camera Icon (show as pic 3), then press “power” button again to enter the photograph mode. Under photograph mode, just press “power” button to take the photos.



### 4.3 Replay

To replay the recorded video or check the photos, stop the recording, and press the “page up” button to enter menu (show as pic 1), press power button to enter the video menu (show as pic2), and move to replay icon (show as pic 3), press power button again to replay the video or check the photos.



### ICONS On the Replay Screen

- Icon 1: Play
- Icon 2: Page down to select the video
- Icon 3: Page up to select the video
- Icon 4: Delete the video
- Icon 5: Return to upper menu
- Icon 6: Resolution of the video
- Icon 7: Resolution of the photo

### 4.4 Time/Date Setting

Stop recording, and press “page up” button to enter the menu. press “page down” button and move to setting icon (show as Pic 1), press “power” button to confirm and come to “date/time” Icon (show as pic 2), press “power” button to enter the setting window, (show as pic 3). Press “page up” or “page down” button to return to upper menu after setting date and time.



#### 4.5 Wifi

Stop recording, and press “page up” button to enter the menu. Press “page down” button and move to setting Icon, press “power” button to confirm and come to wifi Icon to turn on/off wifi.



#### Tips:

1. When the unit is powered on, the wifi name and password will show on the screen for 10 seconds automatically.
2. If you forget the wifi password, stop recording, and press “page down” button for more than 5 seconds, the unit will reset wifi password to the factory preset password. (Preset PW is 12345678).

#### 4.6 Time laps recording (supported only with ACC cable accessories)

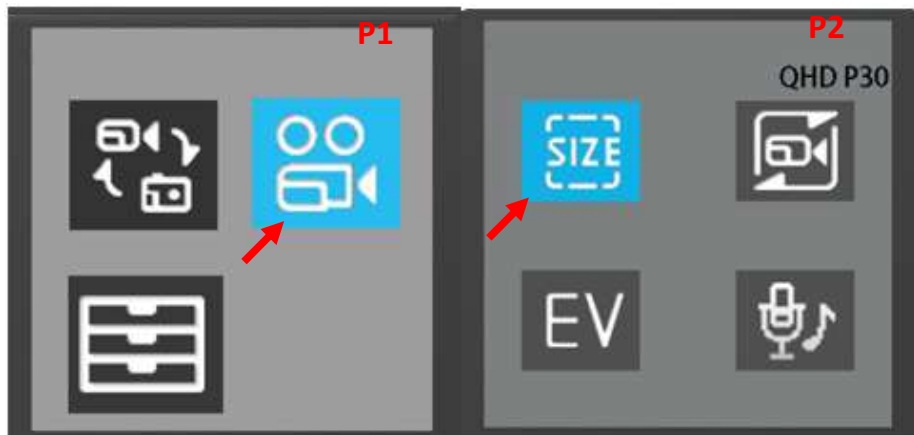
Stop recording, and press “page up” button to enter the menu. press “page down” button and move to Recording Icon (show as Pic 1), press “power” button to confirm enter (show as pic2), move to time-laps recording Icon (show as pic3), to set time laps recording. When the engine is turned off, the machine will start time laps recording automatically.

1second/5seconds/10seconds/30seconds/1minute/5minutes/10minutes/30minutes/60 minutes/off” 10 options are available.



#### 4.7. Resolution setting

Stop recording, and press “page up” button to enter the menu. press “page down” button and move to Recording Icon (show as Pic 1), press “power” button and come to resolution Icon (show as pic2) to set. 1080P 30FPS/1080P 60FPS/1440P 30FPS are the 3 resolutions available for selection. The front camera only, supports resolution up to:1440P 30FPS. If you have the rear camera connected, the max system resolution will be 1080P 30FPS.



#### 4.8 Mute function

If you do not want to record the sound, press the button “page up” to turn off the sound recording function.

#### 4.9 Parking Monitor

When parking Monitor function is on, a vibration icon will show on the screen. After



parking the car, if the car receives impact, the unit will start automatically to record, and lock the video in the memory card.



Parking Monitor setting:

Stop recording, and press “page up” button to enter the menu. press “page down” button and move to Recording Icon (show as Pic 1), press “power” button to confirm enter (show as pic2), move to Parking Monitor Icon (show as pic3), to turn on/off the function.

## 5.0 Loop recording

The loop recording mode is preset in the camera, and the oldest video will be overwritten by the latest video when the memory card is full.

### TIPS

- 1、 If loop recording is turned off, the recording will stop if the memory card is full.
- 2、 For loop recording, “1 minute/3 minute/5 minutes/off” four options are available.



Loop recording setting:

Stop recording, and press “page up” button to enter the menu. press “page down” button and move to Recording Icon (show as Pic 1), press “power” button to confirm enter (show as pic2), move to loop recording Icon (show as pic3), then press “ power button” to set the loop recording time. Press “page up” button to return to upper menu.

## 5.1 G-SENSOR

The unit comes equipped with G-SENSOR. When turned on, when the car sustain impact, the unit will lock the current video automatically.



G-sensor setting:

Stop recording, and press “page up” button to enter the menu. Press “page down” button and move to Recording Icon (show as Pic 1), press “power” button to confirm enter (show as pic2), move to G-sensor Icon (show as pic3), then press “ power button” to set the sensitivity the of G-sensor. Press “page up” button to return to upper menu after setting successfully.

## 5.2 Turning off the screen

When the unit is on, press the “page down” button to turn off the light of the screen, and press it again to turn on the screen.

## 5.3 Date stamp

To put the time and date stamp in the video, the date stamp function needs to be turned on.



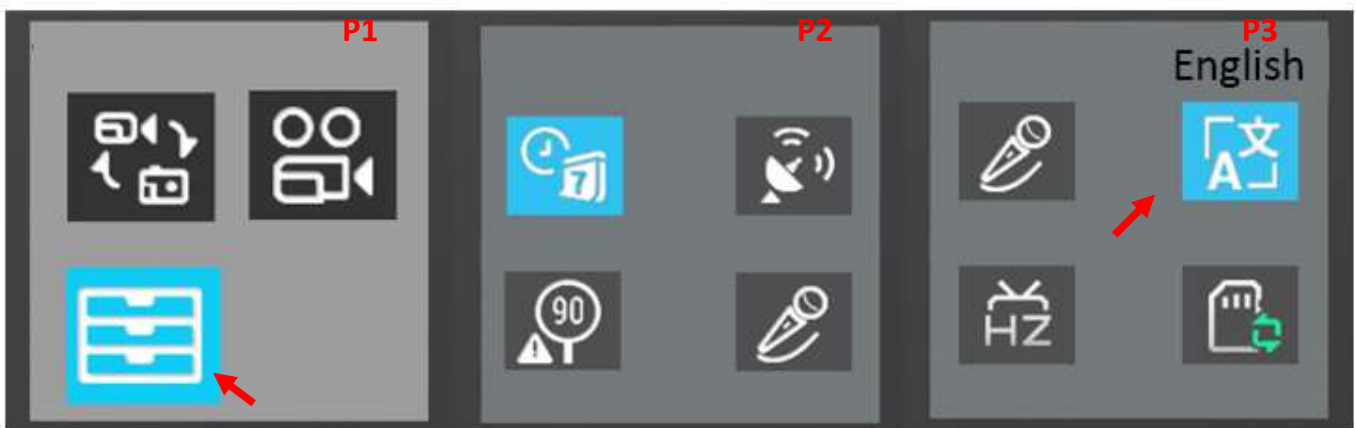
**Tips: if date stamp is off, there will be no time and date in the video**

Date stamp setting:

Stop recording, and press “page up” button to enter the menu. Press “page down” button and move to Recording Icon (show as Pic 1), press “power” button to confirm enter (show as pic2), move to Date stamp Icon (show as pic3), then press “ power button” to turn if on or off. Press “page up” button to return to upper menu after setting successfully.

#### 5.4 Language

Multi language is available.



Language setting:

Stop recording, and press “page up” button to enter the menu. Press “page down” button and move to Setting Icon (show as Pic 1), press “power” button to confirm enter (show as pic2), move to Language Icon (show as pic3), then press “ power button” to select the language accordingly. Press “page up” button to return to upper menu after setting successfully.

#### 5.5 Pic in Pic (available only with rear camera connected)

The machine support dual camera recording. If only one camera is recording, the

resolution is 1440P, and only one recording is in the screen. When the rear camera is connected, there will be two recording showing in the screen.



Pic 1: Single recordings

Pic 2: Dual recordings

## 6. HQBKING APP

### 6.1 HQBKING APP

The name of the app is HQBKING for both Android and IOS user !

### 6.2 Connecting to the App

6.2.1 With the Wifi turned on in the camera, go to the wifi selection menu in your mobile device. The camera Wifi should show up as CarDV-####, select the camera wifi and enter the default password "12345678"

6.2.2 After your mobile device is paired, it will prompt you with a similar message as such "The wifi network has no internet connection, connect anyways?" Select yes and exit the wifi menu in your mobile device.

**6.2.3 Open the APP “ HQBKING” , and click dash camera ICON, APP will Sync the time of the mobile device with the camera, and it will show what the camera is seeing and recording.**



## 7.Specification:



Solution	NTK96663
Lens	OV4689
Resolution of video	1080P FPS30/1080P FPS60/1440P FPS30
Resolutin of photo	VGA/3M/5M/8M/10M/12M
LCD screen	1.54” IPS screen
Viewing angle	6G/170 degree
Video format	MP4
Video compress	H. 264
Photo format	JPG
G-sensor	Support
Time laps recording	Support
Recycle recording	Support
Motion detection	Support
Rear Lens	support/Optional
GPS	support/Optional
GPS Tracking	support/Optional
Pic in Pic	support/Optional
WDR	Support
Wifi	Support
APP	Support
Language	Support multi language
Voltage/Current	USB 5V/2A
Memory card	Max support 128GB