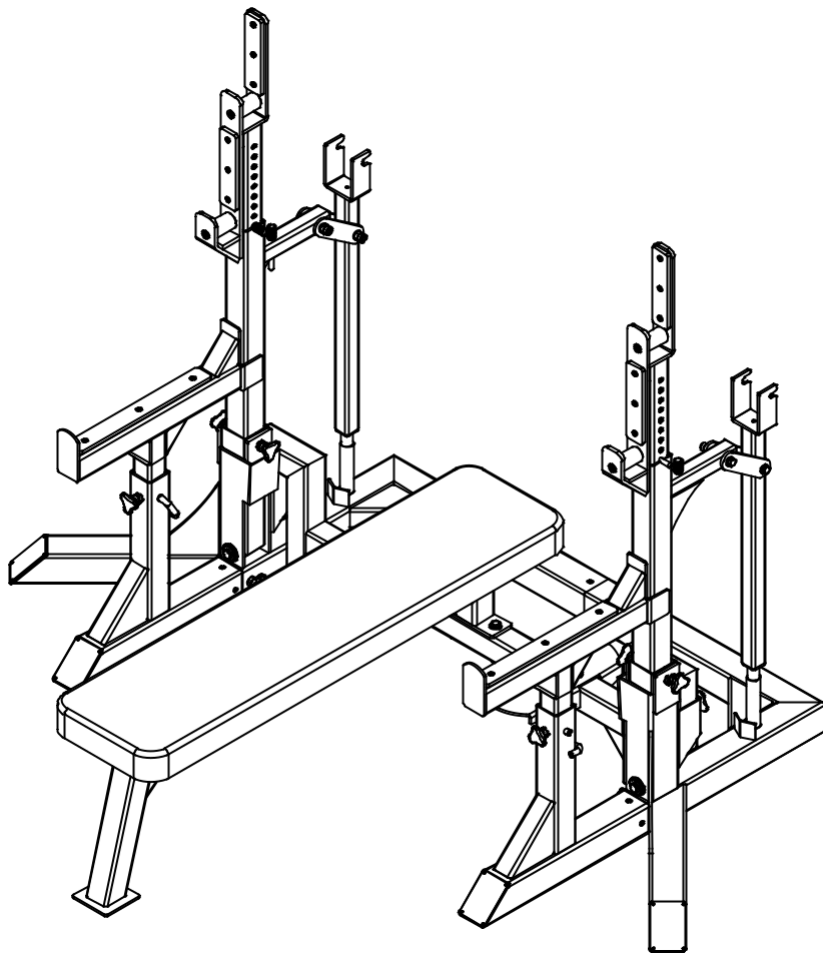


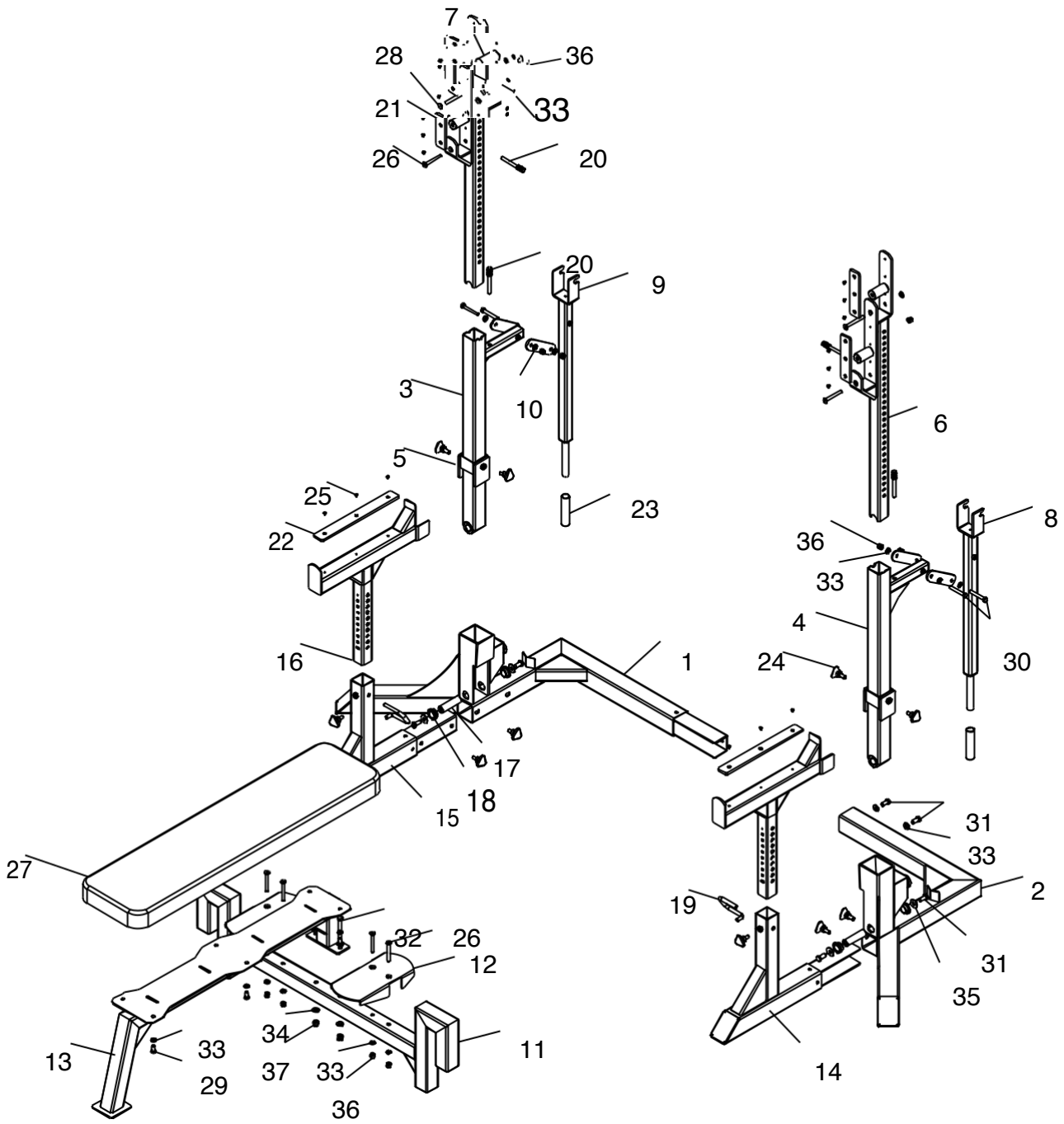
VERVE®

VERVE IPF COMBO RACK – COMPETITION



ASSEMBLY INSTRUCTIONS

HARDWARE ILLUSTRATION



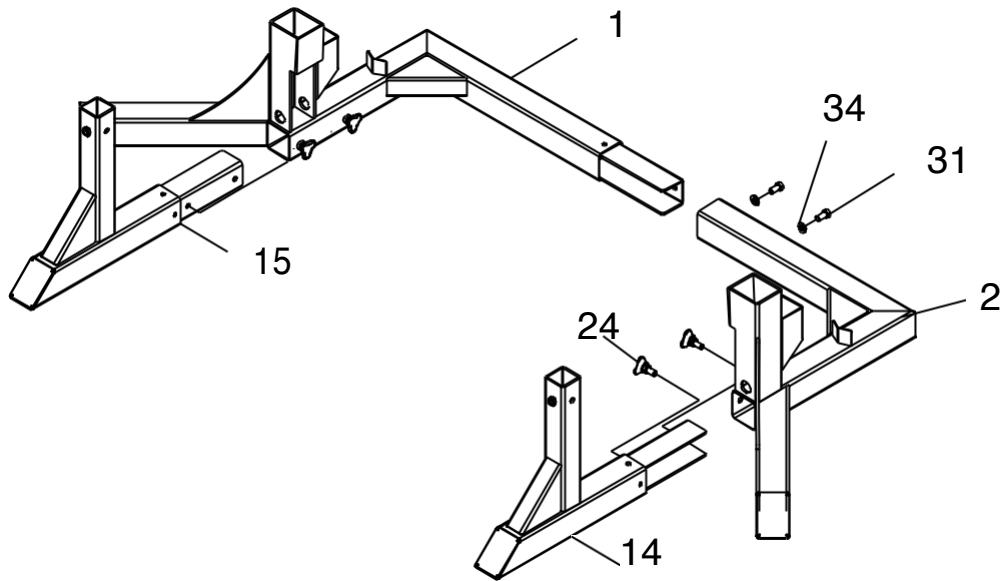
PART LIST

| NO. | DESCRIPTION | QTY |
|-----|--------------------|-----|
| 1 | LEFT FRAME | 1 |
| 2 | RIGHT FRAME | 1 |
| 3 | LEFT MIDDLE FRAME | 1 |
| 4 | RIGHT MIDDLE FRAME | 1 |
| 5 | ADJUSTING BLOCK | 2 |
| 6 | PLUGGED ROD | 2 |
| 7 | SHAFT ϕ 35*62 | 4 |
| 8 | RIGHT HANDLE | 1 |
| 9 | LEFT HANDLE | 1 |
| 10 | SPLINT | 4 |
| 11 | CONNECTION FRAME | 1 |
| 12 | PEDAL | 2 |
| 13 | BOARD FRAME | 1 |
| 14 | RIGHT BASE | 1 |
| 15 | LEFT BASE | 1 |
| 16 | SAFETY BAR | 2 |
| 17 | SHAFT ϕ 25*92 | 2 |
| 18 | BUSHING | 4 |
| 19 | HOOK | 2 |

| NO. | DESCRIPTION | QTY |
|-----|------------------------|-----|
| 20 | ROUND STEEL | 4 |
| 21 | PLASTIC PLATE 8*190*45 | 4 |
| 22 | PLASTIC PLATE 8*380*45 | 2 |
| 23 | HANDLE ϕ 25*125 | 2 |
| 24 | PLUM SCREW | 12 |
| 25 | SCREW M5*10 | 18 |
| 26 | SCREW M10*80 | 6 |
| 27 | CUSHION | 1 |
| 28 | SCREW M10*95 | 2 |
| 29 | BOLT M10*25 | 6 |
| 30 | BOLT M10*70 | 4 |
| 31 | BOLT M12*25 | 6 |
| 32 | BOLT M12*85 | 2 |
| 33 | WASHER 10 | 20 |
| 34 | WASHER 12 | 6 |
| 35 | BIG WASHER 12 | 4 |
| 36 | LOCK NUT M10 | 10 |
| 37 | LOCK NUT M12 | 2 |
| | | |

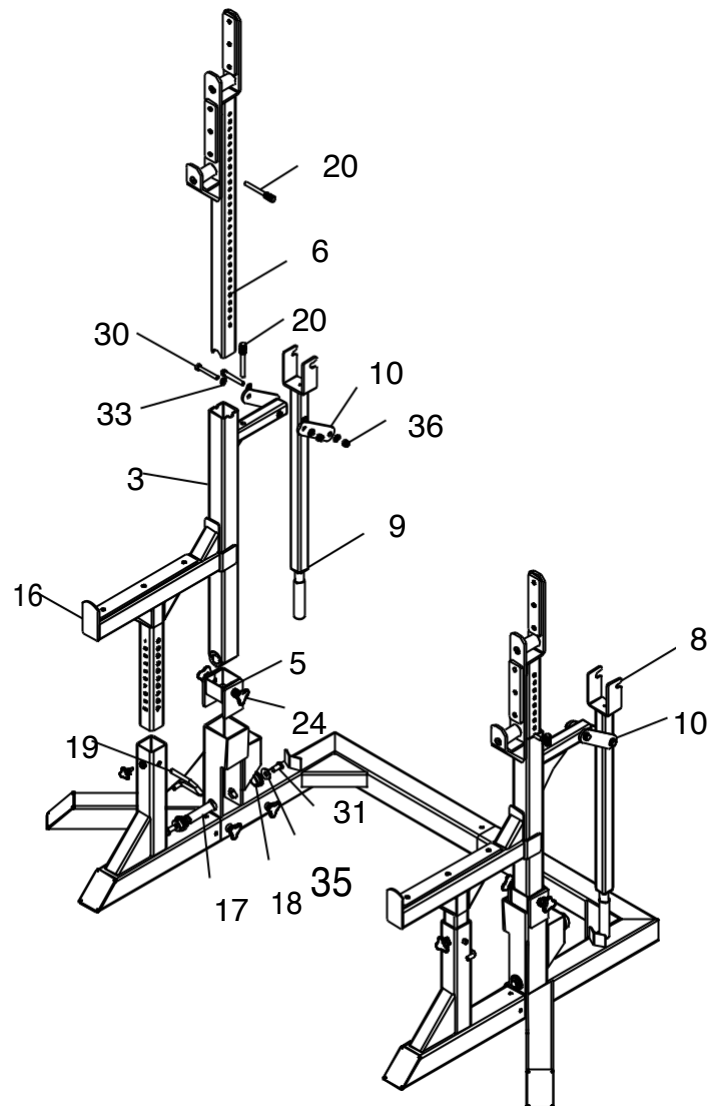
ASSEMBLY STEPS

STEP 01



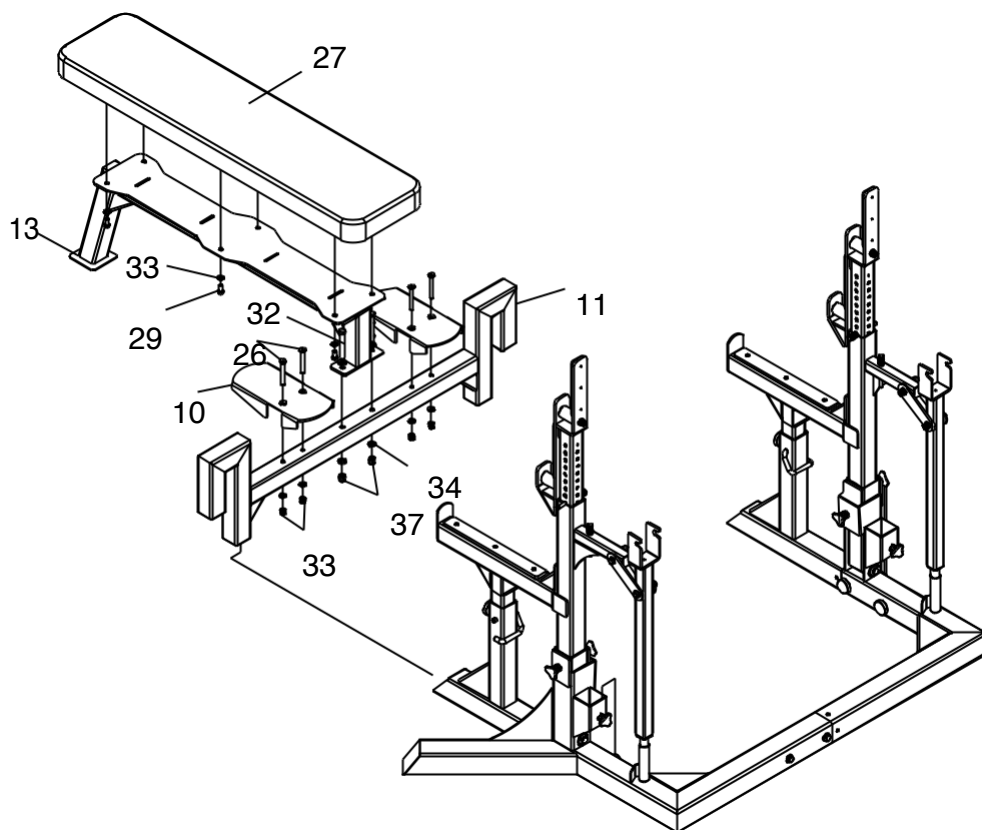
1. Attach left frame (1#) to right frame (2#) with two bolts M12*25 (31#) and two $\varnothing 12$ Washers (34#).
2. Attach left base (#15) and right base (14#) to left frame (1#) and right frame (2#) with four plum bolt (24).

STEP 02



1. Attach the safety bar (16#) to left base (1#) with plum screw (24#) and hook (19#).
2. Attach middle frame (3#) to left frame (1#) with shaft (17#), bushing (18#), bolt M12*25 (31#), two $\varnothing 12$ big washers (35#) and M12 lock nut (18#).
3. Insert the plugged rod (6#) into middle frame (3#) with round steel (20#).
4. Attach handle (9#) to middle frame (3#) with two bolts M10*70 (30#), four $\varnothing 10$ washers (33#), two M10 lock nuts (36#), two splint (10#).
5. The other side installs the same step on the left.

STEP 03



1. Attach connection frame (11#) to left & right frame (1#&2#) with two plum screws (24#).
2. Attach pedal (10#) to connection frame (11#) with four bolts M10*80 (26#), four $\varnothing 10$ washers (33#) and two lock nuts M10 (36#).
3. Attach board frame (13#) to connection frame (11#) with two bolts M12*85 (32#), four $\varnothing 12$ washers (34#) and M12 lock nut (37#).
4. Attach cushion (27#) to board frame (13#) with six bolts M10*25 (29#), six $\varnothing 10$ washers (33#).