

Safety & Instruction Manual

**WORLD'S
BEST**

**GRAFFITI
Removal System**



- *Professionally remove graffiti from all building surfaces.*
- *100% biodegradable, environmentally sustainable.*
- *Trusted by cities & leading contractors worldwide.*



For Expert Advice on Graffiti Removal, Paint Removal, Specialty Cleaning and Surface Protection, visit:
www.GraffitiRemovalinc.com/training



Thank you for choosing the World's Best Graffiti Removal System. We know that you will be delighted with our removal products, protective coatings and equipment which have been designed for maximizing speed and efficiency as well as ease of use.

Having trained hundreds of fellow contractors and cities throughout the USA, Canada, Europe and Australia, we can proudly say that those who use our removal system of 3 main products, have genuinely achieved unparalleled success with their graffiti removal initiatives. This is, of course, in direct contrast to those using just 'products', with no thought to a 'system'.

The three products in our system are purpose built to remove the most common markers used in graffiti vandalism, ie: spray paints, magic markers, wax crayons as well as other inks and dyes such as boot polish.

Whilst it's fun to re-invent the wheel, we ask that you follow the Product Use Instructions, read the TDS's and SDS's prior to using the products, and watch the Introductory Training Video found on our website. Also check out our Expert Advice Page and Case Studies found on our website.

We can promise you that on any given day, one of our World's Best Graffiti Removal Products will become your best friend – especially if you use them as intended. Sure, there will always be the odd job to cause you minor grief, but we are always available to you online or by phone, and are quick to offer detailed advice.

Please remember, these 3 main products in this training manual are NOT primarily designed to remove household type paints, paint spillages or graffiti applied by brush or commercial spraying equipment. However, they will often provide great assistance in these circumstances. For example, they are often ideal for overspray made from latex paint, and thinner stains left behind from thicker paint removal jobs and clean-ups. We offer other specialized products for these applications.

Any 'chemical' system will struggle on surfaces that have been previously sandblasted or 'etched' by uncaring or untrained tradespeople using too high pressure waterblasters or inappropriate equipment.

Historic or important building surfaces require slightly different techniques and obviously much more patience and skill.

The following recommendations outlined in this manual reference techniques and products that we use ourselves as professional contractors. However, the exact suitability of these products and techniques to your project must be determined by you. The use of graffiti removal products on man-made substrates, vinyl and soft furnishings may have unpredictable or damaging effects, so please ensure you always test small areas first before attempting large scale removals.



John Rose, Founder & Developer
World's Best Graffiti Removers



Vanessa & Adam Kopcho,
Director U.S. Operations

CONTENTS

1	Introduction	
	Advantages of Working with World’s Best Graffiti Removers.....	4
	The Easy-Peasy Crash Course in Graffiti Removal.....	5
	Safety Precautions.....	8
2	Product Use Instructions	
	Bare Brick, Stone and Masonry Graffiti Remover.....	9
	Sensitive Surface Graffiti Remover.....	11
	Feltpen Fadeout.....	13
3	Tips and Tricks for the Pro’s	15 - 19
4	Protective Coatings	
	Graffiti Coatings - Permanent vs Sacrificial.....	20
	World’s Best Graffiti Coating.....	21
	MuralShield.....	22
	4G Surface Guard.....	23



Safety Data Sheets & Technical Data Sheets:
www.graffitiremovalinc.com/pages/sdsandtds

ADVANTAGES OF WORKING WITH WORLD'S BEST GRAFFITI REMOVERS

- The user is able to work on any surface without fear of damage to the surface, the environment or him/herself. Complaints of poor workmanship or damage are extremely rare.
- The **system** is easily taught, and is consequently three times faster in removing graffiti than by just using products. Your municipality will be 'graffiti-free' in no time.
- Because the system/products work first time, every time, you will use a 'quarter of the water' for an even better result.
- Worker satisfaction is increased through results. Workers enjoy being able to get on top of the problem much more quickly.

The people using this system have the advantage of receiving knowledge from our 40 years of experience. The products have been 'developed by technicians for technicians' (not like a chemical company add-on to their floor cleaning chemical range).

The Product Use Instructions cover the essential techniques, and can be further enhanced by reviewing our Training Video online, TDS's and the Tips & Tricks For The Pro's (Pg. 15-19 in this manual). These methods are commonly used by us in everyday graffiti removal and will enhance your results and speed up the process significantly. Remember, you should only consider using these techniques once you are comfortable using the products and are familiar with the safety instructions in this manual, SDS's and TDS's.



We are responsible for hands-on training to hundreds of cities and professional contracting teams throughout the USA. Our training sessions are great fun and highly informative, so please contact us to schedule a session with your team.

THE EASY-PEASY CRASH COURSE IN GRAFFITI REMOVAL

Removing graffiti is as easy as “1, 2, 3”...

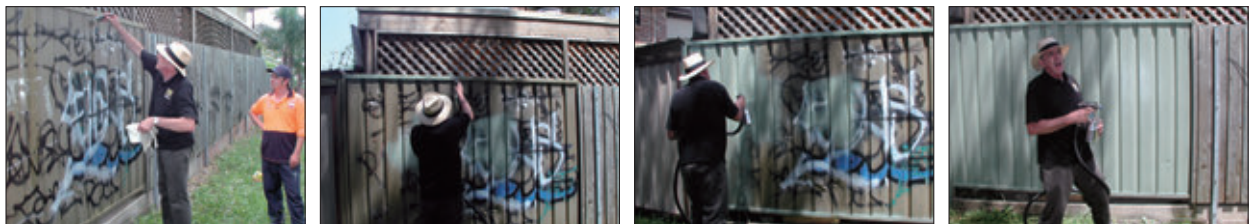
STEP ONE

If it's larger graffiti on painted surfaces like walls and fences, although it may be possible to remove the graffiti using our products, it is usually far quicker and easier to match the color and paint it over.

In fact, out there in 'vandal land', graffiti paint overs represent about 60% of all removal jobs.

The trick to doing this well is having the ability to color match, and use tools which can be easily cleaned out on the job, such as High Volume Low Pressure Spray Guns (HVLP), mini rollers and paint pads.

Exact color matching is not always needed once you commit to painting over whole sections of fences and walls, like in the pictures below. Professional graffiti crews will need to decide on a selection of approximately 8-12 standard colors in any given area and build on it from there.



You only need to color match any given wall once, and from then on you can keep that color for future paint overs. Very often, building owners or managers have the exact color you need to spray their wall (stored under a kitchen sink or in their garage) so don't be shy to ask given the opportunity.

The average graffiti paint over is less than 50 square feet so conventional and airless spraying equipment is usually the wrong choice for typical graffiti paint overs. The time factor involved with changing colors (flushing out hoses at your depot) and the lack of accuracy spraying in urban locations (due to overspray) will add up to a costly waste of time and paint.



HVLP paint sprayers are ideally suited for graffiti paint overs due to their high transfer rate (accurate spraying) and ability to change colors quickly without having to flush out a hose.

Tools such as these mini rollers, paint pads and nylon brushes are cheap enough to dispose of after use, and are ideal for painting over most graffiti on utility boxes, street furniture and doors.



Mini rollers



Paint pads



Nylon brushes



Razor blade scraper

Try to carry a long handled razor blade scraper with you so that you can easily scrape off a small paint sample from an inconspicuous area (such as the rear side of a drain pipe). Take that sample to your local paint store and have them run it through their spectrometer for an exact color match.

Okay, since 60% of graffiti is easily fixed with a color match and a paint over, lets tackle the rest ...

STEP TWO

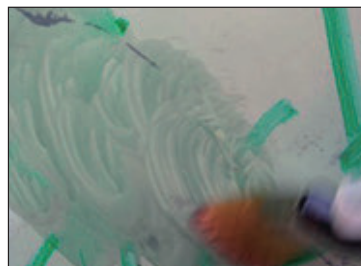
If it's smaller graffiti (perhaps on a painted surface) or if it's on things that you can't paint out, like 'For Sale' signs, road signs, glass, playground equipment, cars, caravans, equipment, powder coat etc., then use these two products:

Sensitive Surface Graffiti Remover (or Graffiti Safewipes) and Feltpen Fadeout.

Example 1:



Using Sensitive Surface Graffiti Remover



Brush on and agitate, as if writing with a pen



Wipe off with a damp towelling cloth

Example 2:



After removing as much as possible with Sensitive Surface Graffiti Remover



Brush on Feltpen Fadeout to fade away remaining ink stain



When you are happy with the results, wipe off with a damp towelling cloth

STEP THREE

Most of the remaining graffiti is on concrete, bricks, block walls and stone. This is just as easily removed. Simply flood coat three times (at roughly 3 minute intervals) with **Bare Brick, Stone and Masonry Graffiti Remover**, wait another few minutes then rinse with a small pressure washer.



Using Bare Brick, Stone & Masonry Graffiti Remover



Brush, broom or spray on; 3 coats at 3 minute intervals



Rinse off product with a small pressure washer or a stiff-bristled brush



Easy-peasy!

Always remember these 3 Golden Rules of graffiti removal:

1 IF GRAFFITI IS NOT COMING OFF EASILY, YOU'RE DOING IT WRONG.

You may require a change of tact or use of another product. We recommend that you call for technical advice and/or see the World's Best Graffiti Removal Catalog and Product Data Sheets for more information.

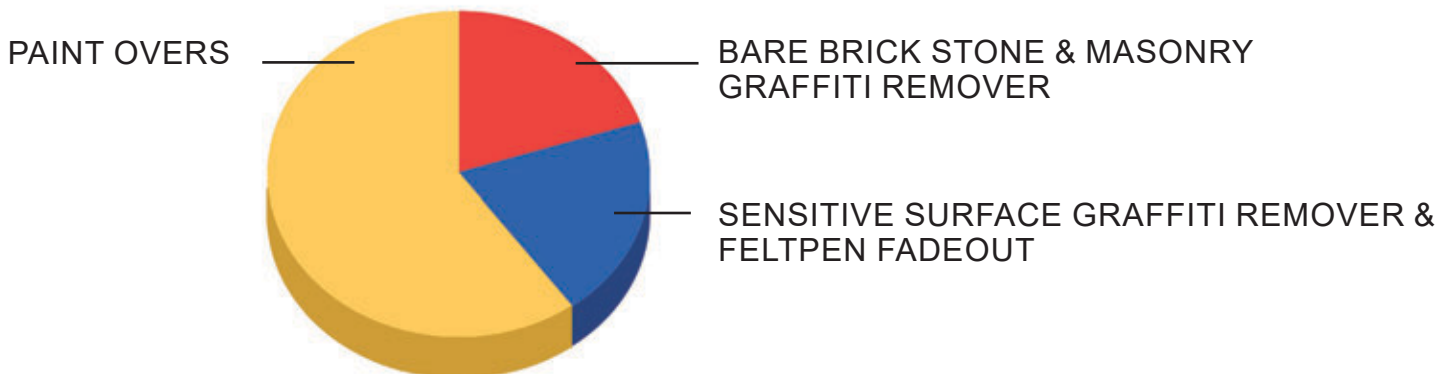
2 IF YOU CAN'T REMOVE A LITTLE BIT OF GRAFFITI, THEN YOU'RE NOT GOING TO REMOVE A LOT.

So this basically means you have to TEST TEST TEST before applying product to an entire job. This way you can determine if you're on the right track first.

3 IF YOU'RE WORKING HARD, YOU'RE DOING IT WRONG.

Forget the scrubbing, blasting and any other abrasive measures. Put simply, either your products are working or they're not. Any problems can be taken care of with the right technique. Consult the Tips and Tricks for the Pro's in this manual, or contact us for more detailed advice.

World's Best Graffiti Removal System



100% ENVIRONMENTALLY SUSTAINABLE

SAFETY PRECAUTIONS WHEN USING GRAFFITI REMOVAL PRODUCTS

Removing graffiti means stripping paint and dissolving waxes, oils, and marker stains. We ask that you familiarize yourself fully with the directions and safety instructions before commencing this type of work. Always remember the following safety precautions:



- Keep out of reach of children.
- Avoid contact with skin by wearing safety gloves at all times.
- Avoid contact with eyes by wearing safety goggles.
- Avoid any vapors or mists by ensuring adequate ventilation.
- Do not smoke while using product.
- Store in a safe dry place away from heat or flame.

Refer to Product Use Instructions, TDS's and SDS's for more details.

Please follow these additional precautionary measures before commencing any graffiti removal jobs:

- Always have a small bottle of water with you for emergency rinsing. Always know where water is located.
- Be aware of your colleagues around you. Keep each other safe.
- Always arrange your truck to work from the sidewalk side as much as possible.
- Always set out safety signs and traffic cones. If cleaning street poles, take a traffic cone with you.
- Carry a spare set of disposable overalls. Clothing **MUST** be removed if chemical spillage on clothing occurs.
- Always be comfortable on your feet when applying graffiti removal products. Avoid slippery slopes, heights and applying graffiti out of arm's reach above your head. If anything looks slightly risky then don't attempt it.
- Beware of leaving little buckets around to be spilt by dragging hoses.
- Report any safety issues with equipment and supplies. Don't leave 'traps' for the next team. Take it out of the trailer or mark it unsafe immediately.
- Beware of power cords near water runoff. **WATER AND ELECTRICITY DO NOT MIX.**
- Allow at least five minutes for machinery to cool down before refuelling. Wipe off any spills carefully before re-starting.
- Be sun smart and apply sunscreen, wear long sleeves, use a wide hat and protect your neck and ears.

PRODUCT USE INSTRUCTIONS

Bare Brick, Stone and Masonry Graffiti Remover (BBSM)

This product is designed as a single purpose only product, for the removal of spray paint from unpainted brick, stone and masonry.

It removes approximately 200 square feet per gallon (of typical graffiti) on concrete, brick, block or masonry. Approximately 80 square feet per gallon on sandstone, limestone, or similar, and approximately 1000 square feet on smoother painted surfaces.



Instructions for use

Bare Brick, Stone and Masonry Graffiti Remover is applied to the wall with a **nylon brush, broom or pump-up sprayer, 3 times at 3 minute intervals**, liberally flooding the graffiti with the product.



Brush on

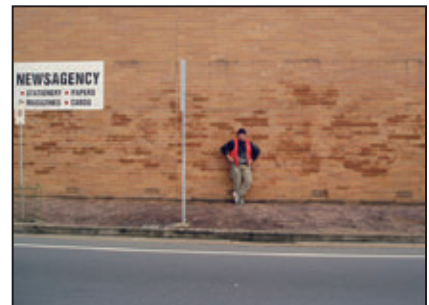
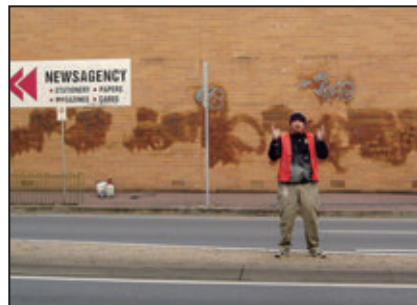
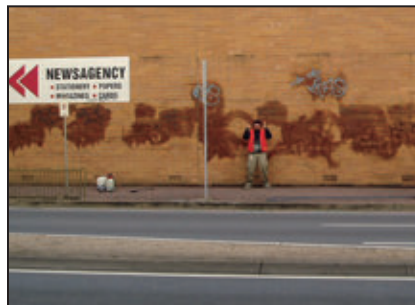


Broom on



Spray on

Agitation, as you apply this product, can be of great assistance. Continued experience with the product will enable the user to judge how many applications are necessary for varying surfaces and particular spray paints. Keep the graffiti wet with the product, because if the remover is allowed to dry, it is no longer working. The 'dwell' time is most important - **the longer, the wetter, the better.**



Three minutes after the final application, the graffiti is best removed by using a hot or cold pressure cleaner (hot is best) at very low pressures. Do not blast too close, in order to remove the graffiti, as it may cause damage and will possibly only remove a small percentage more.


Remember, a pressure cleaner in this instance is really only a quick release cleaner of the dissolved graffiti, and not a remover.

Try to use approximately 1500 - 2000 psi with a 15 or 25 degree fan jet at about 6 inches from the surface.

Failures are usually a result of poor application technique and cannot be resolved by blasting too close or at higher pressures. It is better to repeat the application again from the start.

Alternatively, the dissolved graffiti can be removed using a stiff nylon scrubbing brush in conjunction with a copious supply of running water, as seen in the photos below:



 As a general rule, avoid trying to remove spray paint type graffiti from unpainted surfaces, whilst the walls are facing the hot summer sun. Wherever possible, try to work in the shade or during a cooler time of day.

On days when there is a likelihood of the graffiti remover drying out within minutes or less, the wall can be thoroughly wet with water and towel patted dry **BEFORE** applying the graffiti remover. Working on a **DAMP** wall (not dripping wet) will visibly help speed up the removal process, and slow a hot thirsty wall from slurping up and drying out the remover before it has had a chance to penetrate and encapsulate the graffiti from behind.

PRODUCT USE INSTRUCTIONS

Sensitive Surface Graffiti Remover (SSGR)

This amazing cleaner has been designed as a 'brush on-wipe off' type product for the removal of graffiti from painted and other sensitive surfaces without damage*. It is designed to remove spray paint paints, felt pen and wax crayon markers as well as water and oil-based staining pens from surfaces such as painted walls, fences, signage, posts, clear acrylic and plastic windows and playground equipment. It will normally not damage the underlying surface.

*always test the product in a small inconspicuous place before proceeding further.



Instructions for use

Experience has shown that the best technique in using this product, is as follows:

Step 1: Pour a small quantity of the remover into a small plastic bucket.

Step 2: Choosing a small area of graffiti, apply the remover to the graffiti using a nylon brush.

Step 3: Agitate the graffiti with the brush as if you were writing with it. You can use a white soft scourer if suitable or if there is no risk of abrasion.

Step 4: Wipe the dissolved graffiti away by using a damp towelling cloth.



Keep your cloths clean by rinsing often and turning the cloth over as you wipe the dissolved graffiti away. Hold your cloth under the brush as you agitate the graffiti, to avoid the remover running down the surface.

Felt pens will almost certainly dissolve immediately, but wax crayons may take a little longer. Spray paints will require even further agitation and longer dwell times.

If the area you are cleaning is becoming very dirty with the dissolved graffiti, and by wiping it is not leaving the area clean, then your remover has become too contaminated with ink/dyes. Pour out the dirty remover into another container (for less important use later) and quickly repeat the above method using fresh remover with a clean damp cloth. For this very reason it is best to work with small amounts of remover at any one time.

Do not worry if every marker stain is not removed. Any remaining 'shadows' will be easily removed with Feltpen Fadeout.

GRAFFITI 'SAFEWIPES'



Graffiti 'Safewipes', which are saturated with our Sensitive Surface Graffiti Remover, can be used as an alternative to the methods described above.



- Wipe away unwanted graffiti as easy as 1,2,3.
- Totally non-hazardous and pleasant smelling. Perfect for volunteers.
- Wetter, better wipes that never dry out.
- Ready to go anytime...keep them handy in your glove compartment!



Now available in individually sealed pouches, Graffiti 'Safewipes' are perfect for wiping away smaller graffiti on any smooth or sensitive surface. They are ideal for nuisance smaller graffiti such as these:



PRODUCT USE INSTRUCTIONS

Feltpen Fadeout (FPFO)

This product is designed as a single purpose only product for the final removal of shadows and traces of graffiti markers from all surfaces; particularly painted and plastic surfaces, concrete, terrazzo, stone, marble and granite, without damage

Feltpen Fadeout will also remove some spray paint stains/'ghosts' (particularly reds) from delicate and porous surfaces, and is designed to work in conjunction with World's Best Graffiti Removers.



Instructions for use

After removing as much of any graffiti marker as possible, pour a small quantity of Feltpen Fadeout into a small bucket and then apply as thickly as possible to the remaining shadows with a nylon brush. When shadows have disappeared wipe clean with a damp towelling cloth.



Remove with SSGR



Brush on FPFO

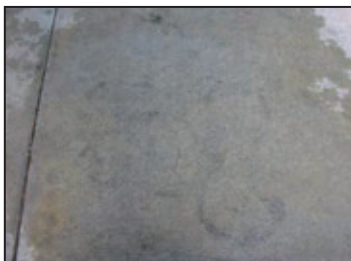


Wipe away with damp cloth

On all smooth or porous surfaces including signage, plastics, stone, concrete, granite or marble, you must attempt to remove as much of the graffiti as possible by first applying Sensitive Surface Graffiti Remover, in the case of marking pens, or Bare Brick, Stone and Masonry Graffiti Remover in the case of spray paint paints.



First, dissolve what you can using Bare Brick, Stone and Masonry Graffiti Remover



Then brush on Feltpen Fadeout and leave on while the remaining stain fades away. Rinse away once complete



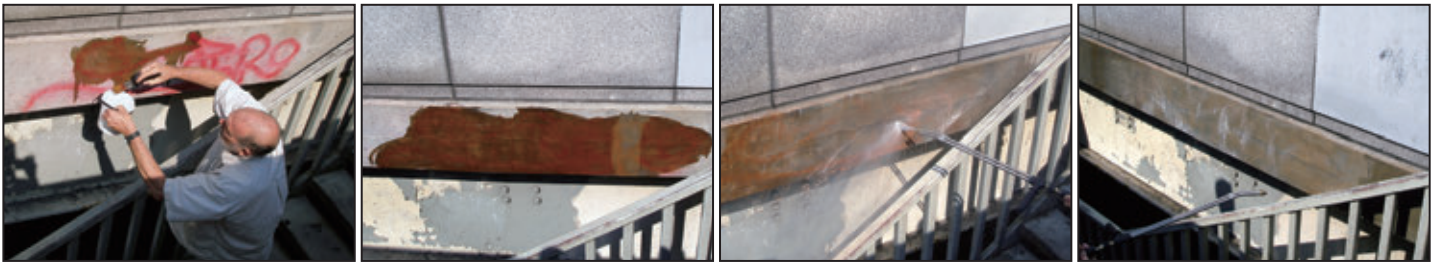
The time taken to work completely will vary from instantly, to several minutes, to even overnight in some cases.

On inks or dyes splashed or thrown onto concrete, brick or porous surfaces etc., it may be necessary to leave FPFO on overnight. When doing this, we suggest applying FPFO as thickly as possible and covering with black plastic. You can gaffer tape the plastic to the wall along the three bottom sides first, and then brush on as much FPFO as possible before sealing the top of the bag onto the wall. This will keep the product wetter for longer, as well as prevent anyone from rubbing up against the wall on the affected area.



Occasionally, some markers or spray paint shadows may not appear to have been affected by Feltpen Fadeout. However, wiping off with a damp cloth in the case of smooth surfaces or pressure cleaning in the case of brick, stone or masonry surfaces can achieve quite surprising results. Do not be concerned if you need to apply this product more than once.

Feltpen Fadeout is also extremely beneficial in removing certain spray paint stains on porous masonry and concrete. After dissolving as much graffiti as possible with Bare Brick, Stone and Masonry Graffiti Remover, an application of Feltpen Fadeout during or after the final rinse will eliminate any remaining pigment or stain in the surface. This method (which is illustrated in the sequence below) can be used on a variety of spray paint colors, however it is especially useful on red spray paint and ANY color containing red. ie: oranges, pinks, purples and browns. These colors all contain red oxide pigments and are the most likely to leave a residual stain, which can be easily fixed with a generous application of Feltpen Fadeout (see 'Tips and Tricks' number 5, pg. 17).



Always be conscious of any products entering our waterways, by disposing of dirty rinsing water and materials correctly. Feltpen Fadeout can possibly ruin clothing and may affect some metal surfaces (eg. zinc and aluminum) if left on, without rinsing off, for extended periods.

TIPS AND TRICKS FOR THE PRO'S

The top 10 of our most commonly used techniques and shortcuts designed for experienced users.



The techniques described in this chapter are based upon our own experience in using the World's Best Graffiti Removal System everyday in the field. They are commonly used by us and will help give you far greater SPEED and ACCURACY (ie: no leaving shadows, nor doing jobs twice, nor causing damage to things) when engaged in professional graffiti removal.



Anyone deciding to make use of these tips must evaluate their own particular situation with regards to the suitability of the substrate/surface being cleaned, and take into account all relevant safety precautions prior to proceeding.

- 1 Sensitive Surface Graffiti Remover may not appear to work immediately on some spray paint paints, suggesting a threatened failure. Sometimes several minutes are required before the paint 'crinkles', so be patient. We find the use of a white soft Scotch-Brite scourer agitated on the graffiti as the product is applied breaks through the glossy hard paint more easily. Only use light agitation, as the purpose is to just break the film of the paint rather than scour the paint off, risking a 'scratched' finish on the surface.



A soft white scourer can be helpful to agitate older, dried out graffiti. In the pictures above, removal was FIRST attempted using another graffiti remover which had dried out the spray paint. SSGR was then applied, resulting in the clean area in the right hand side photo.

- 2 A small amount of Bare Brick, Stone and Masonry Graffiti Remover can be added to Sensitive Surface Graffiti Remover to increase the effectiveness and speed of the removal of some stubborn spray paint paints on painted surfaces. This can be especially helpful in cold weather if SSGR appears to be a little slow. Work quickly, and on small areas at a time, to avoid any damage to the underlying surface. The use of a Scotch-Brite scourer is definitely of help in this instance to increase the removal speed.

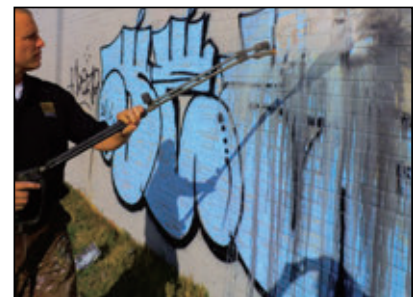


3 Some larger wall areas of 'sound' acrylic paint, which can possibly be damaged by any graffiti removers, can sometimes have quite large tags, or areas, removed without damage. Of course the best alternative is to color match and repaint, but in an emergency the following method can achieve surprisingly good results:

- i. Start up your pressure cleaner, making sure that it is running low pressure on warm to cold temperature, and thoroughly saturate the graffiti area.
- ii. Using a soft nylon broom and a rectangular bucket containing Bare Brick, Stone and Masonry Remover, quickly apply and agitate about 10 square feet of the graffiti until approximately half disappears (the graffiti is dissolving and running).
- iii. Using low pressure, quickly rinse this treated area, and thoroughly wet down ahead to repeat the same on the next section. Approximately 95% of the spray paint graffiti should be gone. If you find that it is affecting the underlying paint, you will have to shorten your initial application time. The reason you stop at approximately half dissolved is because the rinsing tends to remove another 50% more than you have.
- iv. Carefully spot clean any uncleaned areas using SSGR. If the dissolved graffiti has stained the wall, a dilute application of Feltpen Fadeout will return it to its former glory. With this technique never ever use hot water! (It will blister the underlying paint).



After applying BBSM, graffiti will start to run down the wall



Rinse clean with a cold pressure washer



On a damp wall, brush on BBSM then rinse away



Touch up any remaining areas of undissolved graffiti using SSGR

4 Feltpen Fadeout can be applied first to thick felt pen markers without agitating with the brush. Immediately after this, apply Sensitive Surface Graffiti Remover in the normal manner. The Feltpen Fadeout will absorb the dissolved staining inks thus avoiding ghosting.



5 Any spray paint graffiti that changes color when Bare Brick, Stone and Masonry Graffiti Remover is applied, will also be affected by Feltpen Fadeout. Many shadows will disappear if Feltpen Fadeout is applied during and after Bare Brick, Stone and Masonry Graffiti Remover application.

In fact, If the spray paint you are trying to remove is RED, or any color with red in it (ie: orange, pink, brown, purple etc), then a generous application of FPFO will remove any remaining pigment. The fading process in these circumstances normally takes only a few minutes to less than half an hour, but longer dwell times may be necessary. The good news is, if you begin to see the stain disappear (even 5%) you will fade the rest, so be patient and reapply FPFO if needed.

Remember to look out for subtle changes in colors such as greens turning greyish yellow and reds turning crimson. The effect of this technique can be magic, leaving onlookers totally gobsmacked.



Red spray paint dissolving with BBSM



One application of FPFO



Final rinse



Red spray paint bubble writing



Brushing on 3 coats of BBSM



FPFO brushed on - does the trick!

6 Sometimes on masonry surfaces (in particular cement, brick, or cinderblock walls) spray paint graffiti will stop responding to any normal removers, resulting in a slight shadow. For instance, a stubborn blue or black shadow on concrete, masonry, or cinderblock that is showing resistance to BBSM, even after flood coating and leaving for longer periods. That is, it appears that BBSM has virtually stopped working and you have a remaining 5 -10% shadow to deal with.

Try applying a solution of exactly 1 part muriatic acid (hydrochloric aka HCL) to 8 parts or less of water. Brush on this solution and agitate with the brush. You will see it fizz up a bit, as the solution neutralizes. Then rinse shortly after with your pressure washer. This method can be very quick and satisfying, particularly on stubborn blue or black shadows like the ones in the photos below.



This particular blue spray paint on cinder block is a prime candidate for muriatic solution.



Slight shadow remains



After applying muriatic solution



Good as new!

When using this technique, it is a good idea to test out your muriatic solution first in an inconspicuous area. Stronger solutions may possibly have the effect of slightly darkening an area. If this should happen, a complete section may have to be cleaned (with the solution). Remember, your gun technique must be very even and gentle when rinsing the muriatic solution to avoid 'tiger striping' the area.

Typically, shadows are the result of not leaving Bare Brick, Stone and Masonry Graffiti Remover on long enough to do its work. As a rule of thumb, if any given application of BBSM appears to have faded the graffiti MORE than the last, then it just needs a longer dwell time. Always remember the motto;

THE LONGER, THE WETTER, THE BETTER.



HOT TIP: In hot weather environments, try thoroughly wetting the wall down first, prior to applying BBSM. Working on a DAMP wall (not dripping wet) will visibly help speed up the removal process, and slow a hot thirsty wall from slurping up and drying out the remover before it has had a chance to penetrate and encapsulate the graffiti from behind.

7 Tilt-up or precast concrete panels hit with spray paint graffiti can sometimes be a nightmare, mainly because they want to slurp up and dry out the graffiti remover before it has penetrated and done its work. For this very reason, we use a coarse type Scotch-Brite scourer to push in and agitate the Bare Brick, Stone and Masonry Graffiti Remover into the graffiti as we apply it. The results of this exercise are well worth this extra effort.



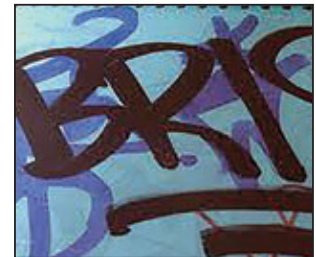
Tilt-up concrete

8 Boot polish markers (which are really just a plastic bottle with a foam applicator and are easily recognized by thin drips running down vertically from the 'tag') are best removed with Feltpen Fadeout. Wet the tag first with water, leave for a minute or two, then apply Feltpen Fadeout. Either wipe or pressure wash off depending on the surface type.



Boot polish

9 Some markers such as Posca Pens, which are an easily identified as flat chalky-style water-based marking pens (usually in light blues, greens, watermelon pinks and other pastel colors) respond better in the first instance to neat Feltpen Fadeout, than they do to Sensitive Surface Graffiti Remover.



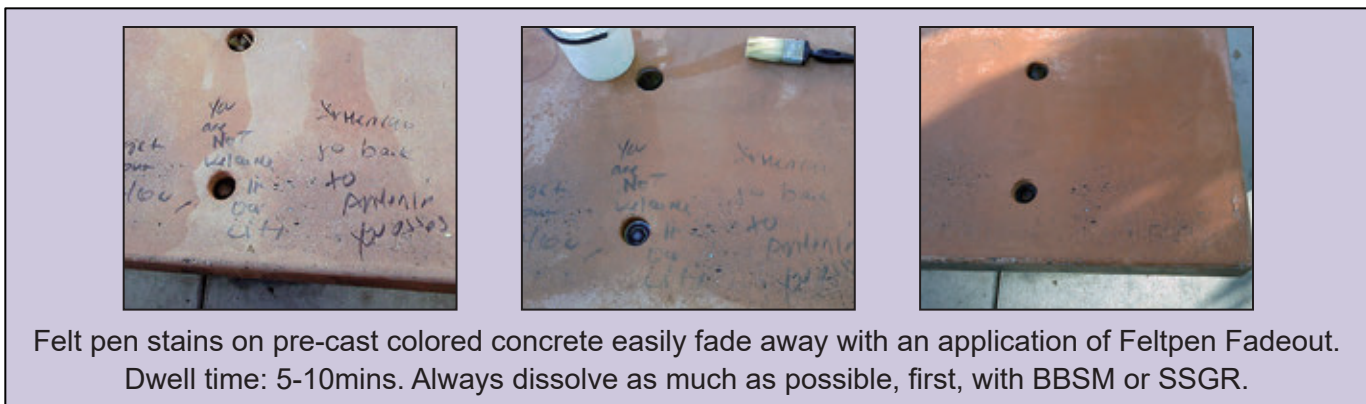
Posca pen and marker

This can also be true of some leather dyes and boot polish, which appear as broad strokes with lots of drips. These sorts of markers on concrete can show some resistance to Bare Brick, Stone and Masonry Graffiti Remover, so it is well worth testing Feltpen Fadeout first before flooding with BBSM.



Appears to be leather dye or boot polish

10 Some felt pen markers on concrete, bricks etc. which have not been affected by Sensitive Surface Graffiti Remover will not appear to fade out after application of Feltpen Fadeout. These are best removed with a hot water pressure cleaner.



Felt pen stains on pre-cast colored concrete easily fade away with an application of Feltpen Fadeout. Dwell time: 5-10mins. Always dissolve as much as possible, first, with BBSM or SSGR.

Graffiti Coatings – Permanent vs Sacrificial

Over the past 30 years we have seen many anti-graffiti coatings come onto the scene very often touting the latest and greatest technology in permanent anti-graffiti coatings. They invariably promise to make cleaning graffiti easy in the future, and often come at great cost to building owners, having to be applied under the exact right circumstances, by contractors who have been trained or licensed to use the product.

These sorts of permanent coatings are usually an unnecessary expense, and in many cases are specified in totally inappropriate situations. They often change the appearance of natural building surfaces with a gloss or semi-gloss finish.

They all work to some degree at least in the initial stages, but after repetitive cleaning, continued exposure to UV sunlight, and other environmental factors such as efflorescence on buildings, they often turn cloudy, peel or delaminate in some areas.

When these sorts of coatings degrade, it can actually make it more difficult to clean graffiti in the long term. If for any reason in the future you want to remove the coating you can have a monster on your hands trying to get them off. Painting over them can be difficult, if not impossible.

With our system of products, we can remove 100% of graffiti without any difficulty on virtually all building surfaces, so in most cases we would rather see no coating applied on a wall, rather than the wrong one.

Problems are most likely going to occur in 2-3 years after applying a coating. This is why you need to carry a big stick and tread very carefully when considering applying any so-called permanent coating to a building surface.



So-called 'permanent' coating turned cloudy



'Anti-graffiti' coating peeling/delaminating



This 'anti-graffiti' coating actually made removal even more difficult in the long-term

We have 3 golden rules for graffiti protection on buildings:

- 1** The best coating for paint is paint. Although it's possible to remove larger graffiti from a painted surface, it is often far quicker and easier to simply color match and paint over. Smaller graffiti can be easily removed with our Sensitive Surface Graffiti Remover or Graffiti 'Safewipes', without the need for specialized protective coatings.
- 2** Any coating you are thinking of specifying must be proven to work as intended, and have stood the test of time without behaving badly (which ultimately would disappoint your customer).
- 3** Unlike permanent coatings, if for any reason in the future you need to remove this coating from a building, you must be able to do this quickly and inexpensively without the risk of damage to the building surface.

Still, there is a genuine need for low-cost graffiti protection on certain surfaces, to ease the burden on maintenance by speeding up removals. This means protecting important building surfaces that were never intended to be painted over. These include historic or delicate buildings and sculptures, porous/decorative feature walls and structures made from raw timber, split face rock, cinderblock, limestone and brick. For these situations we offer World's Best Graffiti Coating.



Historic Buildings



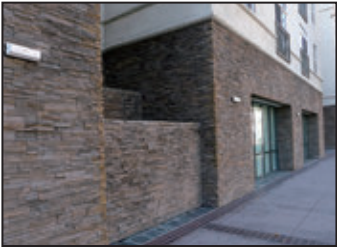
Statues



Decorative Sound Walls



Natural Stone



Feature Walls



Split Face/Cinder Block



Brick



Wooden Fences

World's Best Graffiti Coating

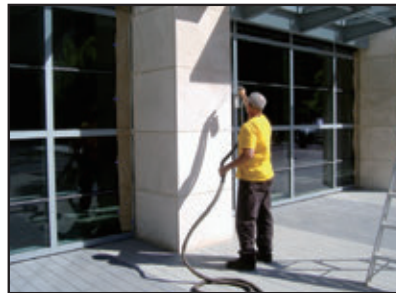
Specifically designed for the protection of natural building surfaces against graffiti, pollution and grime. This amazing product is a virtually invisible and long lasting anti-graffiti coating guaranteed to work perfectly in conjunction with the World's Best Graffiti Removers. The coating has been tested on buildings around the world for over 20 years. It is a pleasure to apply and makes removing graffiti quick and easy every time.



Application methods include:



Handheld Pump-up Sprayer



High Volume Low Pressure Sprayer (HVLP)



Airless Sprayer

Unlike permanent coatings, if you ever have to remove our coating for any reason you can remove it with boiling hot water at pressure (ie: a hot water pressure washer) or 'chemically' using our Bare Brick, Stone & Masonry Graffiti Remover and a cold water pressure washer.

World's Best Graffiti Coating (WBGC) is totally matte in finish and always leaves building surfaces looking perfectly natural, the way they were intended to look.

In the event of graffiti occurring after you have applied WBGC, you can easily remove the graffiti either with hot water or using our removers. WBGC can then be quickly and seamlessly reapplied for future protection, even if the wall is still damp.



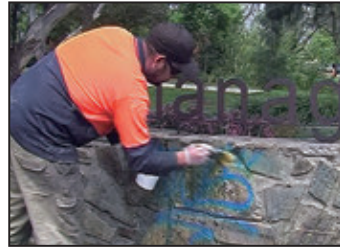
Filled-in bubble writing on previously coated masonry wall



Graffiti is removed using just hot water at 2000psi / 2-3gal per minute



Blue spray paint on pre-coated random wall



Brush on BBSM



Rinse with cold water

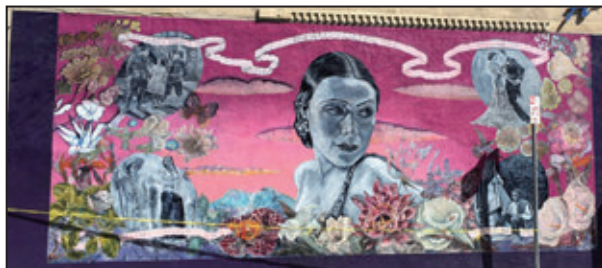


Once clean, re-apply WBGC

Specialty Coatings

Muralshield

Developed in partnership with the Social Public Art Resource Center (SPARC) for the long-term sustainable protection and conservation of fine art acrylic murals. Muralshield offers UV protection, consolidation, and weatherproofing. For unbeatable graffiti protection on public art murals, World's Best Graffiti Coating is always applied over the top of Muralshield as a sacrificial layer of protection, enabling quick removal of all types of graffiti vandalism without damage to the underlying surface.



Muralshield restores color to sun-damaged uncoated murals, as well as flexibility and vibrancy to weakened paint binders. Importantly, Muralshield can be painted over indefinitely, so the artist never loses access to the original artwork, or risks ruining it with a clear coat that turns cloudy, cracks, peels, or delaminates from repeated cleaning, exposure to UV, pollution and weather.



Once Muralshield and World's Best Graffiti Coating are applied to a mural, removing graffiti is quick and easy using our products. See TDS for detailed instructions.

4G Surface Guard

When looking for long-term, sustainable protection on mineral surfaces such as brick stone and masonry, there are situations where 'film forming' coatings are not ideally suited for the job.

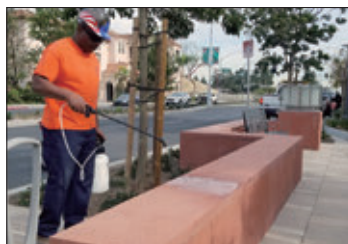
For example, on horizontal surfaces, coatings can change the friction coefficient, making the surface slippery, and a sacrificial coating will wear away too quickly with ordinary foot and wheel traffic.

This is why we offer 4G Surface Guard, an impregnating sealer for porous, brick, stone, and masonry surfaces that provides permanent protection against GRAFFITI, GREASE, GUM and GRIME, including water and oil-based contaminants, mold, mildew, and pollution.

4G Surface Guard is formulated specifically for FLOORS and WALLS with maximum stain and abrasion resistance. Ideal applications are on high-value and high-traffic locations where minimizing maintenance costs, and maximizing presentation is a priority.



Ideal for natural stone that appears wet with water



Used in high value, high traffic locations



Makes cleaning gum easy, and prevents gum ghosts



Can be used to protect horizontal surfaces, such as skate parks

All of our coating solutions have been designed and tested to provide long term sustainable protection to all building surfaces. There are many opportunities to use them for new and existing buildings and public artworks. In fact, once these coatings are applied, removing graffiti is so quick easy, that you can usually offer subsequent removals for 6 months to a year free of charge.

For detailed product use and coverage instructions, always refer to our Technical Data Sheets.

Contact us for further advice on the most suitable protective coating for your next project.



“Our graffiti crews count on World’s Best Graffiti Removal System to WORK, every time. I really believe World’s Best Products are second to none. Their exceptional staff support matched our passion and drive, helping us become one of the best graffiti abatement teams in the country.”

Mr Jet Lim, CSD Manager
City of Fresno Police Department, California USA



Photo courtesy of GRS Sacramento



*Manufactured by:
Urban Restoration Group US Inc.
5439 San Fernando Rd W., Los Angeles CA 90039 USA
Phone: 818-247-2555 Fax: 818-247-2515
www.graffitiremovalinc.com
sales@graffitiremovalinc.com*

 / @WorldsBestGraffitiRemovers

 / @WorldsBestGraffitiRemovers

 / @graffitiremovers

 / @graffitiremovers

TM and copyright © 2024 Urban Restoration Group US Inc.
All Rights Reserved.