



ORA·C

2021 Linesheet (CAD)

caro@ora-c.com | 1 (514) 431-4046 | www.ora-c.com
7080 rue Alexandra #309, Montreal, Qc, H2S 3J5, Canada

Wholesale Terms

- All prices in this linesheet are in Canadian dollars.
- Every wholesale orders require purchasing a minimum of at least 6 pieces adding to 800\$ or more (based on CAD wholesale prices before taxes, shipping or other fees).
- All wholesale purchases are made to order, please allow proper time frame for your pieces to be made and shipped. (about 4-8 weeks for wholesale orders depending on the order size and current season work-load). All orders are made on a first come first serve basis, so ordering late in a busy season can contribute to a longer wait. Please email me for a more precise time estimate once you have made your selection.
- All orders must be secured with a 50% deposit payment before production can begin. The remaining payment is to be made within one week (NO LATER) from receiving your order. I can accept Interac transfers (free), or credit card payments (3% fee).
- Buyers are responsible for shipping and payment related fees (if applicable).
- No exchanges or refunds will be accepted. Except in the unlikely even where the wrong pieces were sent over or if pieces were somehow damaged during the initial shipment to your store. In which case you should let me know immediately.
- Please be advised that due to the current COVID-19 restrictions, delays on production or shipment timing may occur unexpectedly. I will however do my best to be as transparent as possible. Thanks for your understanding.

About the Jewelry

- All pieces are designed and handmade locally in our Montreal studio in Canada.
- Details may vary between each individual piece due to the use of natural stones and handmade techniques, hence making each piece unique.
- Brass and silver are metals that naturally develop patina over time. One can find beauty in this evolving process, the same way imperfections in the handmade object can be cherished. But to prevent it while displayed in your store, please regularly use a polishing cloth to keep the jewelry work clean and shiny.
- Our "gold-plating" option is made of a brass base with a layer of quality light colored 10kt yellow gold. Though gold plating uses real gold and delays the development of patina, please note that it is a layer that can naturally fade over time and wear.
- All ear posts and backings are made of 925 sterling silver.
- For any maintenance tips please don't hesitate to ask or visit the "Care Tips" page on my website.
- Repair services are offered for ORA-C pieces at all time. Please direct all issues back to me.

THIS IS KNOT A BOW YOU - COLLECTION



REIGN BOW (earrings)

Brass & Carnelian	\$ 150 ws \$ 300 retail
Silver & Zing Jiang Jade	\$ 280 ws \$ 560 retail

Large hand sculpted textured bow, set with a Carnelian (red) or Zing Jiang Jade (green) stones. Note that these earrings might be on the heavier side for some people, but with the large backings provided, they are very comfortable.

83mm long x 50mm wide and 16 g each
Sold as a pair.



OPEN ARMS

Choose -----
● Light green jade
● Nephrite jade

Brass	\$ 136 ws \$ 272 retail
Silver	\$ 180 ws \$ 360 retail

Cross like two-part hand sculpted earrings, set with either Light green jade or Nephrite cabochons, with two large fresh water baroque pearls and matching jade beads.

48mm long x 26mm wide and 7g each
Sold as a pair.



MADELEINE

Brass	\$ 128 ws \$ 256 retail
Silver	\$ 165 ws \$ 330 retail

Pinched leaves two-part hand sculpted earrings set with a large Carnelian cabochon and a fresh water baroque pearl.

50mm long x 22mm wide and 6.4g each.
Sold as a pair.

THIS IS KNOT A BOW YOU - COLLECTION



MANCINO

Brass	\$ 42.50 ws \$ 85 retail
Silver	\$ 55 ws \$ 110 retail

This two part dangle ear cuff sits just above your ear bump hugging the side of the LEFT ear. No need to have pierced ears to wear it.

About 30mm high and 2.8g each.
Sold as a single cuff.



BLOOM

Brass	\$ 44.50 ws \$ 89 retail
Silver	\$ 60 ws \$ 120 retail

Hand sculpted mini hoops with a small floral bow detail. These are very light and perfect for a daily wear, or a fun piece to layer with your bolder jewels.

About 20mm long and 2 g each.
Sold as a pair.



TRIFOLI (hoops)

Brass	\$ 52.50 ws \$ 105 retail
Silver	\$ 74 ws \$ 148 retail

Two-part hand sculpted hoops with a dangling trifolium detail. These are very light and perfect for a daily wear, or a fun piece to layer with your bolder jewels.

About 30mm long and 2g each.
Sold as a pair.

THIS IS KNOT A BOW YOU - COLLECTION



SOLARI

Choose ----- ● Light green jade
● Nephrite jade
● Carnelian

Brass \$ 90 ws | \$ 180 retail
Silver \$ 127 ws | \$ 254 retail

Hand sculpted ring set with a large natural stone. You can choose from three stones: Light green jade, Nephrite jade (dark green) or Carnelian (red).

Comes in half sizes from 5 - 11



KNOTTI

Brass \$ 50 ws | \$ 100 retail
Silver \$ 70 ws | \$ 140 retail

Hand sculpted ring with three knot-like details. A great stacking piece to fit with other rings.

Comes in half sizes from 5 - 11



BOW WEE

Brass \$ 55 ws | \$ 110 retail
Silver \$ 75 ws | \$ 150 retail

Hand sculpted sterling silver ring shaped like a ribbon gift wrapping your finger or like floral petals mimicking a bow. This pieces is meant to make you smile.

Comes in half sizes from 5 - 11

THIS IS KNOT A BOW YOU - COLLECTION



REIGN BOW (necklace)

Brass & Carnelian	\$ 132.50 ws \$ 265 retail
Silver & Zing Jiang Jade	\$ 275 ws \$ 550 retail

A large hand sculpted textured bow pendant on a chunky chain of ajustable length. Set with a Carnelian or Zing Jiang Jade stone. To be worn with or without the pendant, this piece is as versatile as it is a stunner.

Chain length 55.5 cm, pendant length 70 mm and width 50mm. Total weight 44g.



TRIFOLI (chain)

Brass	\$ 57.50 ws \$ 115 retail
Silver	\$ 130 ws \$ 260 retail

A chunky chain of ajustable length, with a hand made hook and a dangling trifolium pendant. A very versatile piece to be worn frontwards of backwards.

Chain length 55.5 cm



NEWEST COLLECTION

CLASSICS FROM PAST COLLECTIONS



FOLK L'ORE - COLLECTION



GINETTE

Brass	\$ 85 ws \$ 170 retail
Silver	\$ 105 ws \$ 210 retail
Gold-Plated Brass	\$ 105 ws \$ 210 retail

Hand sculpted petal-like earrings with dangling rings.
Looks like two earrings in one!

36 mm long x 18 mm wide, 5.5g each.
Sold as a pair.

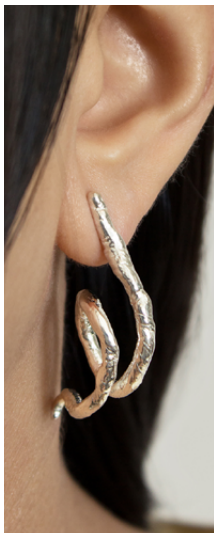


PASCALINE

Brass	\$ 75 ws \$ 150 retail
Gold-Plated Brass	\$ 99 ws \$ 198 retail

Hand pinched voluminous 4 leaves earrings.

40 mm long x 30 mm wide, 5.5g each.
Sold as a pair.



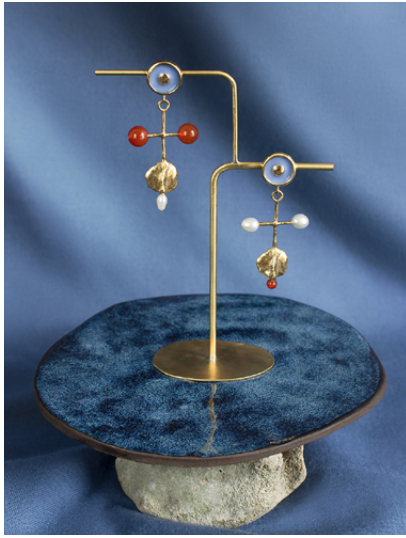
YVONNE

Brass	\$ 70 ws \$ 140 retail
Silver	\$ 95 ws \$ 190 retail
Gold-Plated Brass	\$ 95 ws \$ 190 retail

Asymmetrical hand sculpted vine-like earrings. Wear one alone or two on the same ear!

65 mm long, 7.5g each.
Sold as an asymmetrical pair.

FOLK L'ORE - COLLECTION



ROBERTE

Brass \$ 113 ws | \$ 226 retail
Gold-Plated Brass \$ 149 ws | \$ 298 retail

Asymmetrical two-parts hand sculpted solid brass or gold-plated brass earrings, with denim resin enamel, natural Carnelian beads and baroque fresh water pearls.

60 mm long, 6g each.
Sold as an asymmetrical pair.



BLANCHE

Brass \$ 113 ws | \$ 226 retail
Gold-Plated Brass \$ 137 ws | \$ 274 retail

Two-parts hand sculpted solid brass or gold-plated brass earrings, holding long natural mother-pearl shells I brought back from Mexico. Each shell is a little different going from white to pink-ish purple tones. Inquire color availability as they are limited.

90 mm long, 8.5g each.
Sold as a pair.



LOUISETTE

Gold-Plated Brass \$ 180 ws | \$ 360 retail

Four-parts hand sculpted gold-plated brass earrings, set with gorgeous natural Carnelian stones and baroque fresh water pearls. Note that each pieces may vary due to the use of natural stones and pearls. * Only a limited amount left.

65 mm long, 7.5g each.
Sold as a pair.

FOLK L'ORE - COLLECTION



MURIELE

Brass	\$ 99 ws \$ 198 retail
Gold-Plated Brass	\$ 126 ws \$ 252 retail

Asymmetrical beaded earrings made of four different hand sculpted brass casts, assembled with natural and dyed fresh water pearls, carnelian stones and shells from Hawaii.

Floral top: 60mm and 2.6g
Crescent top: 68mm and 3.6g
Sold as an asymmetrical pair.



CELESTINE

Choose ----- ● Carnelian
● Olive jade

Brass	\$ 90 ws \$ 180 retail
Silver	\$ 115 ws \$ 230 retail
Gold-Plated Brass	\$ 115 ws \$ 230 retail

Hand sculpted coil hoops, balanced with natural red carnelian or olive jade stones.

55 mm long x 60 mm wide, 8.5g each.
Sold as a pair.



RAYMONDE

Choose ----- ● Carnelian
● Blue-Lace Agate

Brass	\$ 90 ws \$ 180 retail
Silver	\$ 115 ws \$ 230 retail
Gold-Plated Brass	\$ 115 ws \$ 230 retail

Hand sculpted hoops with abstract finger pinched petals, attached with berry-like natural Carnelian or Blue-lace Agate stone beads.

44mm long x 60 mm wide, 5.5g each.
Sold as a pair.

FOLK L'ORE - COLLECTION



ELVIRE

Brass	\$ 130 ws \$ 260 retail
Silver	\$ 195 ws \$ 390 retail

Hand sculpted necklace made of solid brass or sterling silver bead-like chain links. Fits as a choker.

Small	15" long, 30 g
Medium	16" long, 39 g
Large	17" long, 50 g



SIMONNE

Choose ----- ● Blue-Lace Agate
● Olive jade
● Carnelian

Brass	\$ 65 ws \$ 130 retail
Silver	\$ 77 ws \$ 154 retail

Hand sculpted pendant in solid brass (with 14kt vermeil chain), or sterling silver (with sterling silver chain), set with the choice of 3 natural stones: Carnelian, Olive Jade or Blue-lace Agate.

Chain is 18" long, 39 g



GILBERTE

Brass	\$ 90 ws \$ 180 retail
Silver	\$ 130 ws \$ 260 retail

Hand sculpted solid brass or sterling silver bracelet with dangling rings. Makes soft tinkling sounds on your every move. Can be delectately opened to fit the wrist.

69 mm x 55 mm, 26 g
One size (though can be made larger on request)

FOLK L'ORE - COLLECTION



CÉCILE

Brass \$ 80 ws | \$ 160 retail
Silver \$ 99 ws | \$ 198 retail

Hand sculpted brass or sterling silver cast ring with a drip-like dangle.

Comes in half sizes from 5 - 11



ESTELLE

Choose ----- ● Blue-Lace Agate
● Olive jade
● Carnelian

Brass \$ 75 ws | \$ 150 retail
Silver \$ 87 ws | \$ 174 retail

Hand sculpted ring cast in raw brass or sterling silver. Comes with three choices of natural stones: Carnelian, Olive Jade or Blue-lace Agate.

Comes in half sizes from 5 - 11



SYLVAINE

Choose ----- ● Carnelian
● Pearls

Brass \$ 80 ws | \$ 160 retail
Silver \$ 99 ws | \$ 198 retail

Hand sculpted stackable rings in either brass or sterling silver. Comes with round Carnelian stones or baroque Keshi fresh water pearls. (For the pearls version, each piece will be different and therefore unique due to the irregular nature of the pearls).

Comes in half sizes from 5 - 11

CLASSICS - COLLECTION



JULES

Choose	-----	● Carnelian
		● Pineapple Jasper
		● Light Green Jade
		● Blue-Lace Agate
		● Dalmatian Jasper
		● Nephrite Jade

Brass	\$ 95 ws \$ 190 retail
Silver	\$ 113 ws \$ 226 retail

Comes in half sizes from 5 - 11



JORDAN

Brass & Silver	\$ 99 ws \$ 198 retail
----------------	--------------------------

Hand sculpted dangle earrings in both solid sterling silver and solid brass assembled assymmetrically.

44 mm long, 5.5g each
Sold as an asymmetrical pair.



WREN

Brass	\$ 80 ws \$ 160 retail
Silver	\$ 110 ws \$ 220 retail

Hand sculpted bracelet to be worn tightly between the hand and the wrist bone. Can be delectately opend to fit the wrist.

Small about 50mm x 60mm
Medium about 57mm x 64mm