

ORA-C

Linesheet

caro@ora-c.com | 1 (514) 431-4046 | www.ora-c.com
7080 rue Alexandra #309, Montreal, Qc, H2S 3J5, Canada



WHOLESALE TERMS

All prices in this linesheet are in Canadian dollars.

All wholesale orders require purchasing a minimum of 800\$ (based on CAD wholesale prices)

All pieces are handmade locally and made to order, please allow proper time frame for your order to be made and shipped. (about 6-8 weeks for wholesale orders depending on the order size and current season work-load). All orders are made on a first come first serve basis, so ordering late in a busy season can contribute to a longer wait. Thanks for inquiring for a more precise time estimate.

All orders must be secured with a 50% deposit before production can begin. The remaining payment is to be made within one week (NO LATER) from the delivery date of your order.

Buyers are responsible for shipping and custom fees.

OUR PRODUCTS

All pieces are designed and handmade locally in our Montreal studio.

Details may vary between each individual piece due to the use of natural stones and hand made techniques, hence making each piece unique.

Brass, bronze and silver are metals that naturally develop patina over time. One can find beauty in this evolving process, the same way imperfections in the handmade object can be cherished.

Our gold plating process is made with a layer of quality 14kt yellow gold. Though gold plating uses real gold and delays the development of patina, please note that it is a layer that can naturally fade over time and wear.

All ear posts on brass, bronze and silver pieces are made of 925 sterling silver.

For any maintenance tips please don't hesitate to ask or visit the "Care Tips" page on our website.

CUSTOM COLORS OPTIONS

Since everything is made to order, you can easily customize a few of the pieces offered. You can request custom color combos from this chart for tassel and enamel pieces at no additional cost with your order. (Please note, the actual colors of the threads or enamel may slightly vary from what one can view on this page.)

Cold Enamel Colors



Tassel Colors



All tassel threads are made of a polyblend manufactured locally in Montreal and free of toxic chemicals.



MEXICAN AMBER BILLIE DROP

Brass

90\$ ws / 180\$ retail

Hand sculpted solid brass casts matched with these uniquely beautiful yellow Amber beads I have brought back from my last trip to Mexico in February. The Amber beads come in various sizes and shapes. Please inquire to choose your own beads. Otherwise I will choose the best amber stone I have available for you.

Sold as a pair.

**There is a limited amount of this style available !*



PEBBLE DROPS WITH OPAL & AMBER

Silver

85\$ ws / 170\$ retail

Hand sculpted sterling silver casted rings matched with little rice-shaped Baltic amber, Mexican yellow opal beads I have brought back from my last trip to Mexico in February, and mini baroque fresh water pearls. Note that due to the nature of the stones each pair will be slightly different in color and shape.

Sold as a pair.

**There is a limited amount of this style available !*



PEBBLE DROPS WITH OPAL & CHRYSOPRASE

Silver

85\$ ws / 170\$ retail

Hand sculpted sterling silver casted rings matched with green chrysoprase and yellow opal beads I have brought back from my last trip to Mexico in February, and fresh water pearls (blue and baroque white). Note that due to the nature of the stones each pair will be slightly different in color and shape.

Sold as a pair.

**There is a limited amount of this style available !*



ROBERTE

Brass **113\$ ws** / 226\$ retail
Gold plated brass **149\$ ws** / 298\$ retail

60 mm long, 6g each.

Asymmetrical two-parts hand sculpted solid brass casts, with resin enamel, natural carnelian beads and baroque fresh water pearls. With sterling silver posts and backings. You may choose your own enamel color (see options on page 2).

Sold as a pair.



BLANCHE *

Brass **113\$ ws** / 226\$ retail
Gold plated brass **137\$ ws** / 274\$ retail

90 mm long, 8.5g each.

Two-parts hand sculpted solid brass cast, holding long natural mother-pearl shells I brought back from Mexico with sterling silver posts and backings. Note that each shell is a little different going from white to pink-ish tones. Inquire color availability if you have preferences.

Sold as a pair.

**There is a limited amount of this style available !*



LOUISETTE *

Gold plated brass **180\$ ws** / 360\$ retail

65 mm long, 7.5g each.

Four-parts hand sculpted solid brass casts, set with gorgeous natural carnelian stones and baroque fresh water pearls. Note that each pieces may vary due to the use of natural stones and pearls.

Sold as a pair.

**There is a limited amount of this style available !*



MURIELE

Brass **99\$ ws** / 198\$ retail
 Gold plated brass **126\$ ws** / 252\$ retail

One is 68 mm long and 3.6g
 the other is 60 mm and 2.6g

Assymetrical beaded earrings made of four different hand sculpted brass casts, assembled with natural and dyed fresh water pearls, carnelian stones and shells from Hawaii. With sterling silver posts and backings.

Price shown is for a pair, but can be sold as singles, or symmetrical pairs.



CÉLESTINE

Brass **90\$ ws** / 180\$ retail
 Sterling silver **115\$ ws** / 230\$ retail
 Gold plated brass **115\$ ws** / 230\$ retail

55 mm long x 60 mm wide, 8.5g each.

Hand sculpted coil hoops, balanced with colorful natural stone beads. With sterling silver posts and backings. Choose between natural canelian or olivine jade beads.

Sold as a pair.



● Carnelian stones
 ● Olivine jade



YVONNE

Brass	70\$ ws / 140\$ retail
Sterling silver	95\$ ws / 190\$ retail
Gold plated brass	95\$ ws / 190\$ retail

One is 40mm long x 32mm wide, 6g
the other is 46mm long x 10 mm wide, 3g

Assymetrical hand sculpted solid brass or sterling silver casts, with sterling silver posts and backings.

Price shown is for a pair, but can be sold as singles or symmetrical pairs..



RAYMONDE

Brass	90\$ ws / 180\$ retail
Sterling silver	115\$ ws / 230\$ retail
Gold plated brass	115\$ ws / 230\$ retail

44mm long x 60 mm wide, 5.5g each.

Hand sculpted brass or sterling silver cast hoops, attached with natural beads. With sterling silver posts and backings. Choose between natural canelian or blue-lace agate beads.

Sold as a pair.



- Carnelian stones
- Blue-lace agate



PASCALINE

Brass	75\$ ws / 150\$ retail
Sterling silver	99\$ ws / 198\$ retail
Gold plated brass	99\$ ws / 198\$ retail

40 mm long x 30 mm wide, 5.5g each.

Hand pinched leaves cast in solid brass or sterling silver, with sterling silver posts and backings.

Sold as a pair.



GINETTE

Brass	85\$ ws / 170\$ retail
Sterling silver	105\$ ws / 210\$ retail
Gold plated brass	105\$ ws / 210\$ retail

36 mm long x 18 mm wide, 5.5g each.

Hand sculpted solid brass or sterling silver casts with dangling rings. With sterling silver posts and backings. Looks like two earrings in one.

Sold as a pair.





LUCE

Brass	34\$ ws / 68\$ retail
Sterling silver	40\$ ws / 80\$ retail
Gold plated brass	40\$ ws / 80\$ retail

11 mm long (beads part), 1.4 g

Hand sculpted solid brass or sterling silver mini cast, with a long sterling silver post. Is worn as a single stud climbing up the lobe of the ear.

Sold as a single stud.



ELVIRE

Brass	130\$ ws / 260\$ retail
Sterling silver	195\$ ws / 390\$ retail
Gold plated brass	195\$ ws / 390\$ retail

Small	15" long, 30 g
Medium	16" long, 39 g
Large	17" long, 50 g

Hand sculpted chain necklace made of solid brass or sterling silver casts. Fits as a choker.

Price is for one necklace.



SIMONNE

Brass	63\$ ws / 126\$ retail
Sterling silver	77\$ ws / 154\$ retail
Gold plated brass	77\$ ws / 154\$ retail

Small	16" chain	
Medium	18" chain	pendant is 25 mm 5 g

Hand sculpted pendant in solid brass (with vermeil chain) or sterling silver (with sterling silver chain), set with the choice of 3 natural stones.

- Carnelian
- Blue-lace agate
- Olive jade



GILBERTE

Brass **90\$ ws** / 180\$ retail
Sterling silver **130\$ ws** / 260\$ retail

69 mm x 55 mm, 26 g
One size (though can be made larger on request)

Hand sculpted solid brass or sterling silver bracelet with dangling rings. Makes soft tinkling sounds on your every move. Can be delectately opened to fit the wrist.

Price is for one bangle.

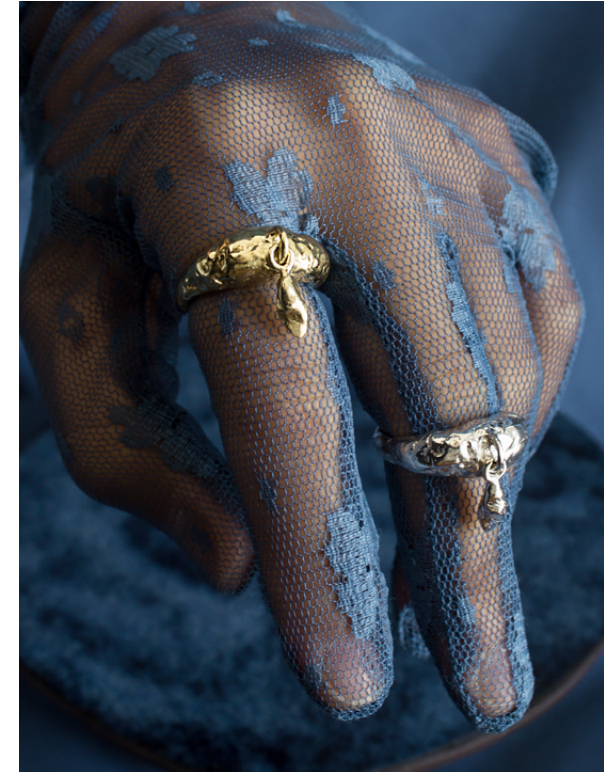


HORTENSE

Brass **49\$ ws** / 98\$ retail

Dangle piece is 98 mm long with the tassel
Key ring is 35 mm diameter.
Total of 27g

Hand sculpted solid brass key chain with a large tassel. Key ring is made of solid natural brass. You may choose your own tassel color (see options on page 2).



CÉCILE

Brass **80\$ ws** / 160\$ retail
Sterling silver **99\$ ws** / 198\$ retail

Size from 5 - 10

Hand sculpted brass or sterling silver cast ring with a metal dangle.

Price is for one ring.



ESTELLE

Brass **70\$ ws** / 140\$ retail
Sterling silver **82\$ ws** / 164\$ retail

Size from 5 - 10

Hand sculpted ring cast in brass or sterling silver.
Comes with three choices of natural stones setting.

Price is for one ring.

- Carnelian
- Blue-lace agate
- Olive jade



SYLVAIN

Brass **80\$ ws** / 160\$ retail
Sterling silver **99\$ ws** / 198\$ retail

Size from 5 - 10

Hand sculpted stackable rings in either brass or sterling silver. Comes with round Carnelian stones or baroque irregular fresh water pearls.

Price is for one ring.



- Carnelian stones
- baroque pearls



JULES

Brass
Sterling silver

95\$ ws / 190\$ retail
113\$ ws / 226\$ retail

Size from 5 - 10

Hand sculpted solid brass or sterling silver cast ring set with a natural stone cabochon. Note that since natural stones are used, variations in color or shades may occur from piece to piece.

Price is for one ring.



Carnelian

Pineapple jasper

light green jade

Blue-lace agate

Dalmatian jasper

WREN

Brass

70\$ ws / 140\$ retail

Small about 2" x 2 3/8"

Medium about 2 1/4" x 2 1/2"

Hand sculpted solid brass cast bracelet. Is to be worn tightly between the hand and the wrist bone. Can be delectately open to fit the wrist.



WREN

Sterling silver **100\$ ws / 200\$ retail**

Small about 2" x 2 3/8"

Medium about 2 1/4" x 2 1/2"

Hand sculpted solid sterling silver cast bracelet. Is to be worn tightly between the hand and the wrist bone. Can be delectately open to fit the wrist.



SELBY

Brass **99\$ ws / 198\$ retail**
Sterling silver **113\$ ws / 226\$ retail**

Comes on a 28" chain. Pendant is 2.5" long, 9g.

Hand sculpted solid brass (with vermail chain) or sterling silver (with a sterling silver chain) cast pendant necklace with a brush like tassel.

You may choose your own tassel color (see options on page 2).





JORDAN

Brass & silver **110\$ ws / 220\$ retail**

1 3/4" long, 5.5g each

Hand sculpted dangle earrings in both solid sterling silver and solid brass assembled assymmetrically, with sterling silver posts and earring backs.

Sold as a pair.



CLEOPATRA

Brass **82\$ ws / 164\$ retail**
Sterling silver **124\$ ws / 248\$ retail**

2" long ,1 3/4" wide, 10-12g each.

Large hand sculpted solid brass or sterling silver cast earrings with sterling silver posts and earring backs. Note that these are on the heavy side, but a large backing helps to support their weight.

Sold as a pair.

