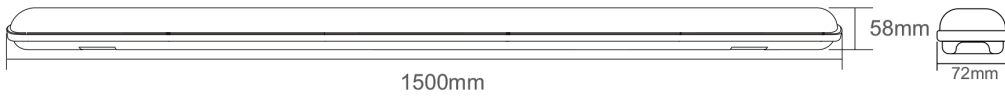
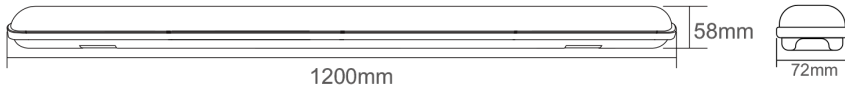
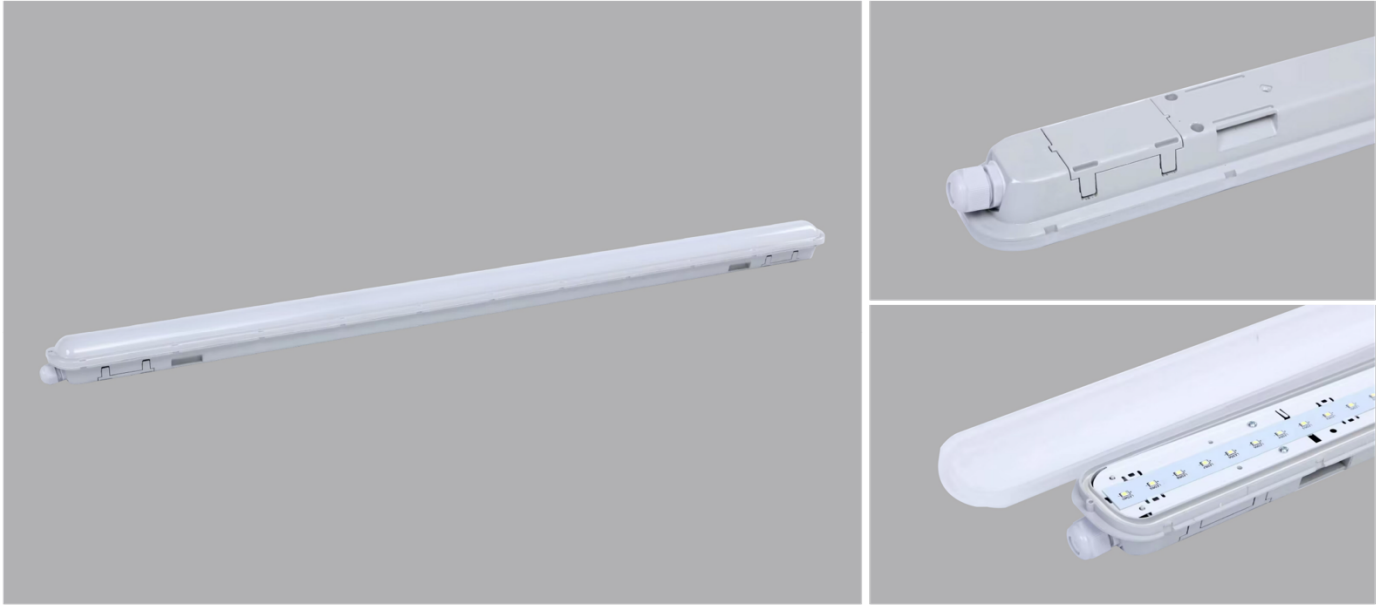




# LED Tri-Proof Light



## Applications

- Warehouses
- Supermarkets
- Shopping Malls
- Office Buildings
- Workshops
- Car Parks

# Specifications

Model No.	TRI-AU07-4FT-SD	TRI-AU07-5FT-SD
Dimension(mm)	1200*72*58	1500*72*58
Wattage(w)	40W	50W
Input Voltage(v)	AC220~240V	
Light Source	SMD2835	
SDCM	<6	
CCT(K)	3000K-4000K-6500K	
Lumen (Lms/W) ± 5%	110Lms/W	
CRI	>80	
Beam Angle (°)	120°	
Dimming	Non-Dimmable	
Protection Class	Class I	
Degree of Protection (IP)	IP65	
Impact Resistance (IK)	IK08	
Material	Heatsink	ABS
	Diffuser	PC
L70	>54000Hrs	
Glow Wire Test (°C)	650°C	
Operation Temp. (°C)	-20~ 45°C	
Installation	Surface Mounted / Suspended	
Certifications	UKCA, CE, RoHS	
Warranty	5 Years	