

12VDC

12VDC Microwave Sensor In IC Solution

HN084-03V



- 12VDC Input, PWM Dimmable
- Original IC Solution
- DIP Switches & Remote Control
- Small Size, One For All

- On/Off Control
- Detection Area
- Daylight Sensor
- Hold Time
- Stand-by period
- Stand-by dimming level
- Remote Control

Technical Data

| | | |
|------------------------------|--|-------------------------------------|
| Operating Voltage 7.5-12V | Detection Angle Side Wall < 150° Ceiling Mounted 360° | Microwave Frequency 5.8GHz±75MHz |
|------------------------------|--|-------------------------------------|

| | | |
|-------------------------------|--|---------------------------|
| Connection Quick Connector | Brightness Adjust -/+ buttons on remote | Microwave Power <0.3mW |
|-------------------------------|--|---------------------------|

| | | |
|----------------------------|---|-------------------|
| Operating Current <30mA | Detection Area DIP Switch: 50%/100% Remote: 50%/100% | IP Rating IP20 |
|----------------------------|---|-------------------|

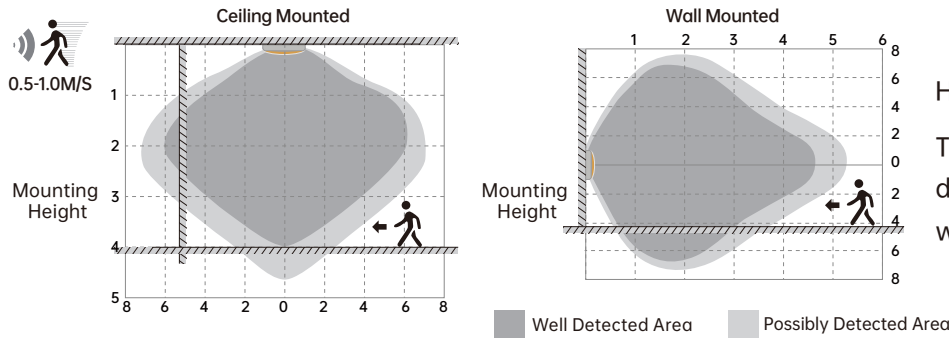
| | |
|-----------------------|---|
| Control Method PWM | Stand-by dimming level DIP Switch: 0%/20% Remote: 0%/10%/20%/30% |
|-----------------------|---|

| | |
|--|---|
| Mounting Height 2-4m/6.56-13.12ft Ceiling Mounted | Stand-by period DIP Switch: 15min/+∞ Remote: 5min/15min/30min/+∞ |
|--|---|

| | |
|---|---|
| Detection Range Max.∅12m/39.37ft Ceiling Mounted | Hold Time DIP Switch: 5S/1min/3min/10min Remote: 30S/1min/3min/10min |
|---|---|

| | |
|--------------------------------------|---|
| Operating Temperature -20°C~+60°C | Daylight Threshold DIP Switch: 30Lux/Disable Remote: 10LUX/30LUX/50LUX/Disable |
|--------------------------------------|---|

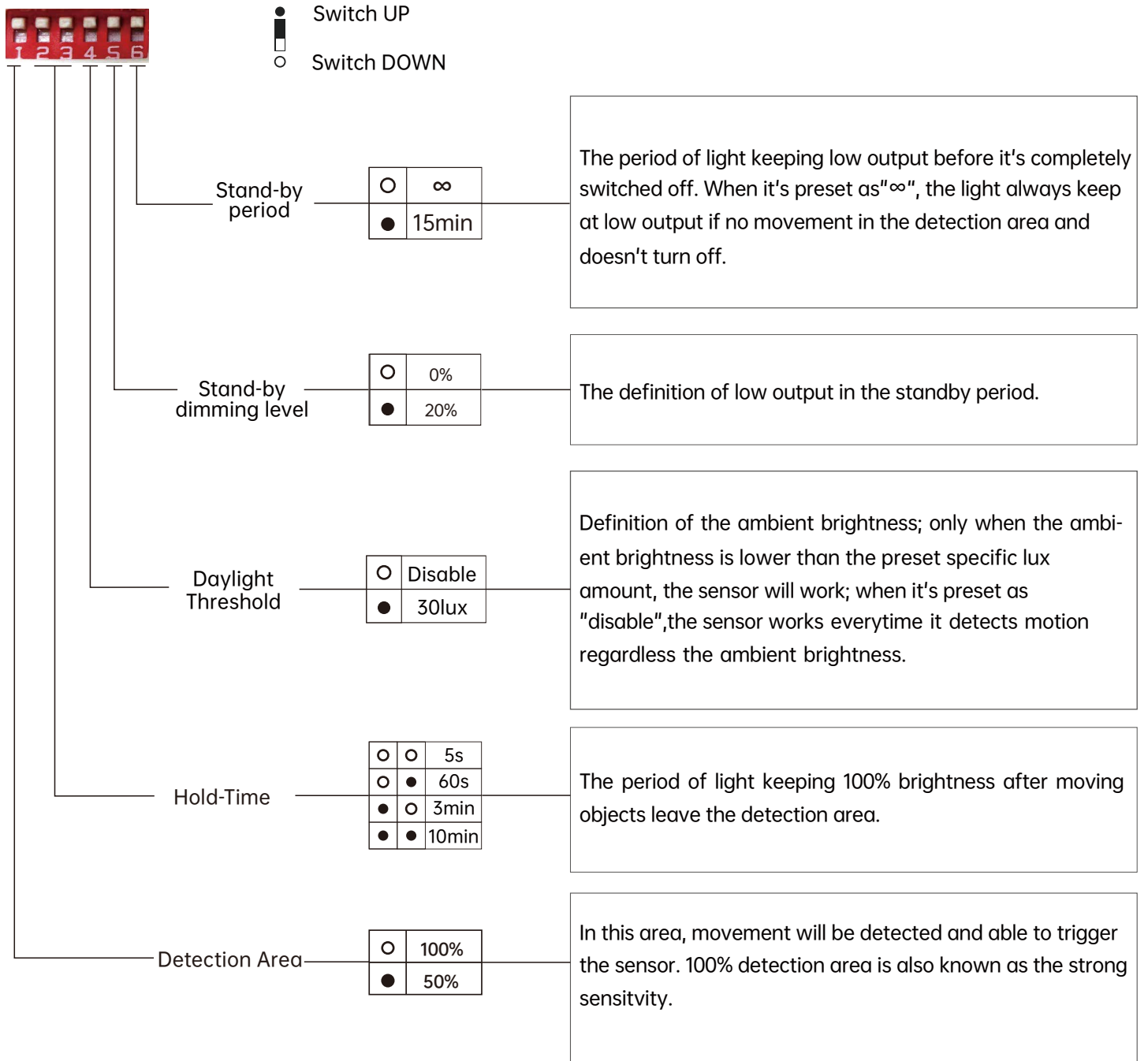
Detection Patterns



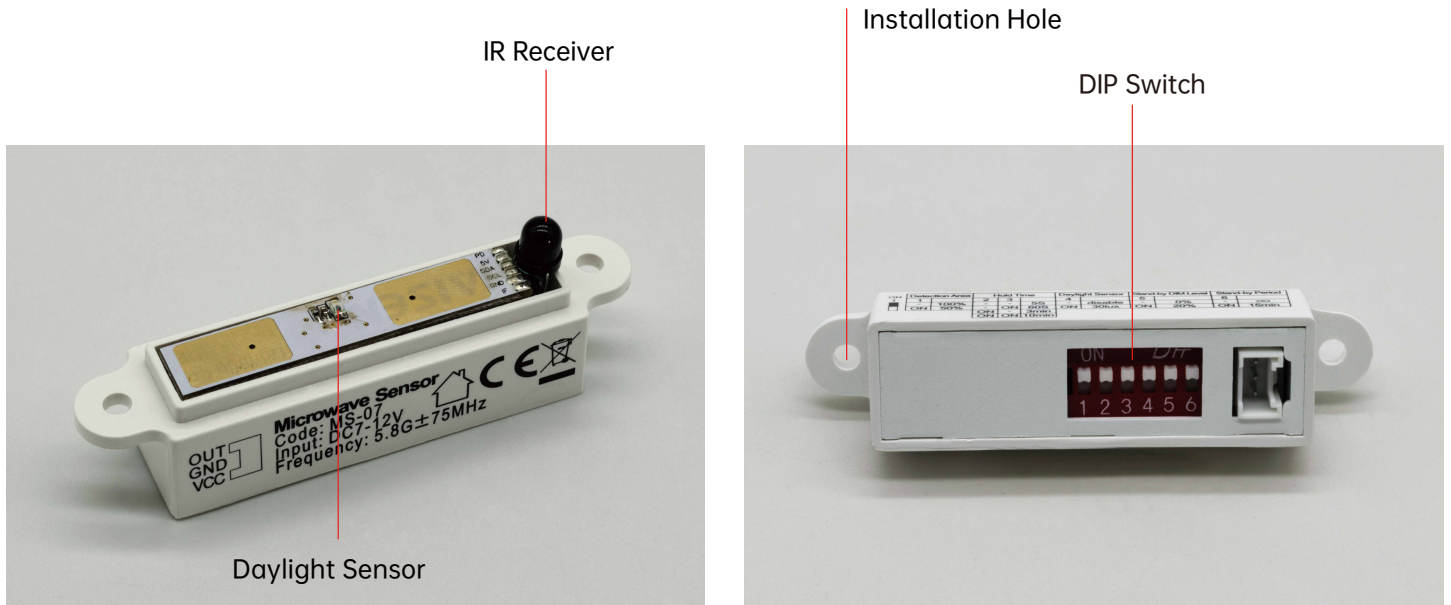
Highest mounting height is 4m

This figure indicates the maximum distance at the highest mounting height with 100% sensitivity.

DIP Switch Setting

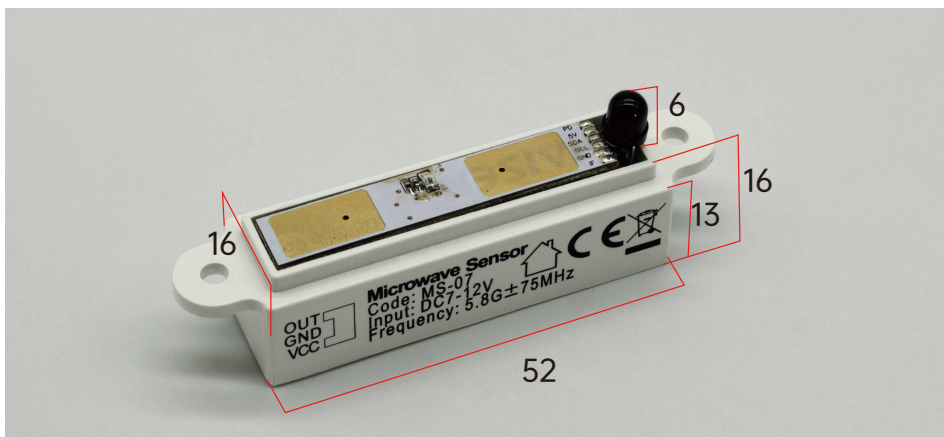


Mechanical structure

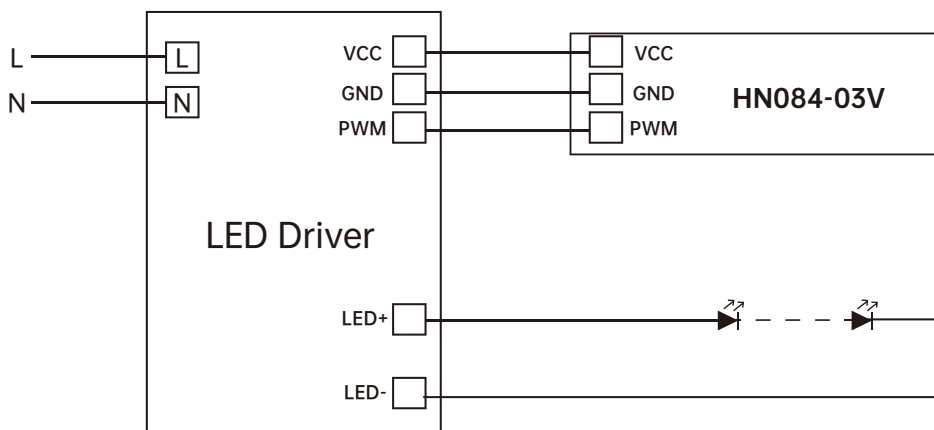


Dimensions

Unit:mm

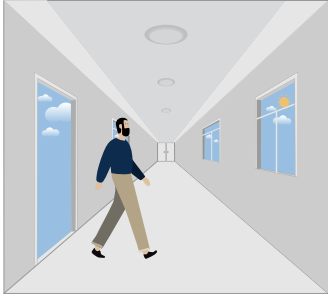


Wiring Diagram

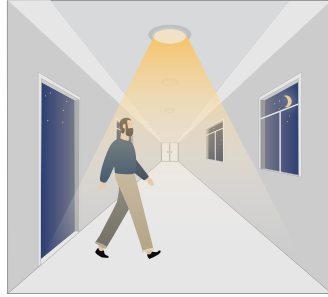


Performance

1. Automatically ON/OFF function



With sufficient daylight, even when motion detected, light remains OFF.



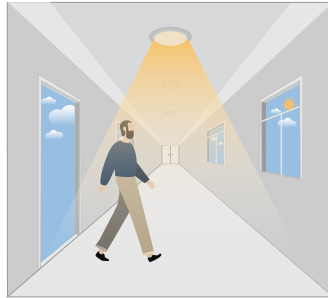
With insufficient daylight, the sensor turns light ON when motion gets detected.



The sensor turns OFF light automatically after the holdtime when there's no motion detected.

2. Daylight Disable

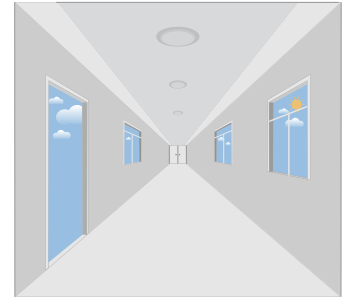
When daylight threshold is preset as "disable", the sensor turns light ON when motion gets detected, and OFF after hold-time.



The sensor turns light ON when motion gets detected.

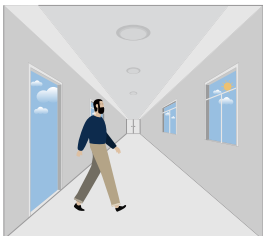


The sensor keeps light ON for holdtime period after motion leaves.

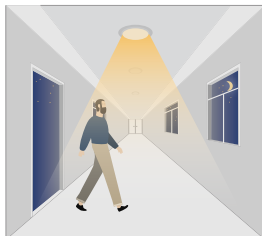


The sensor turns OFF light automatically after the holdtime.

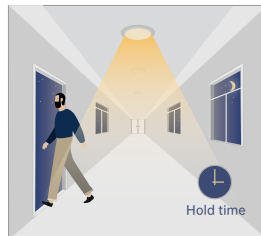
3. Corridor Function, Bi-level Dimmable



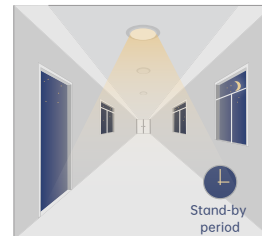
With sufficient daylight, the sensor keeps light OFF even motion gets detected.



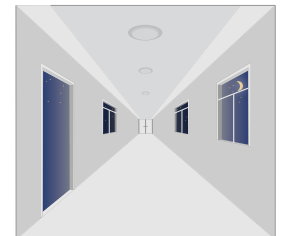
With insufficient daylight, the sensor turns light ON when motion gets detected.



After there's no motion detected, the sensor keeps light ON 100% for holdtime.



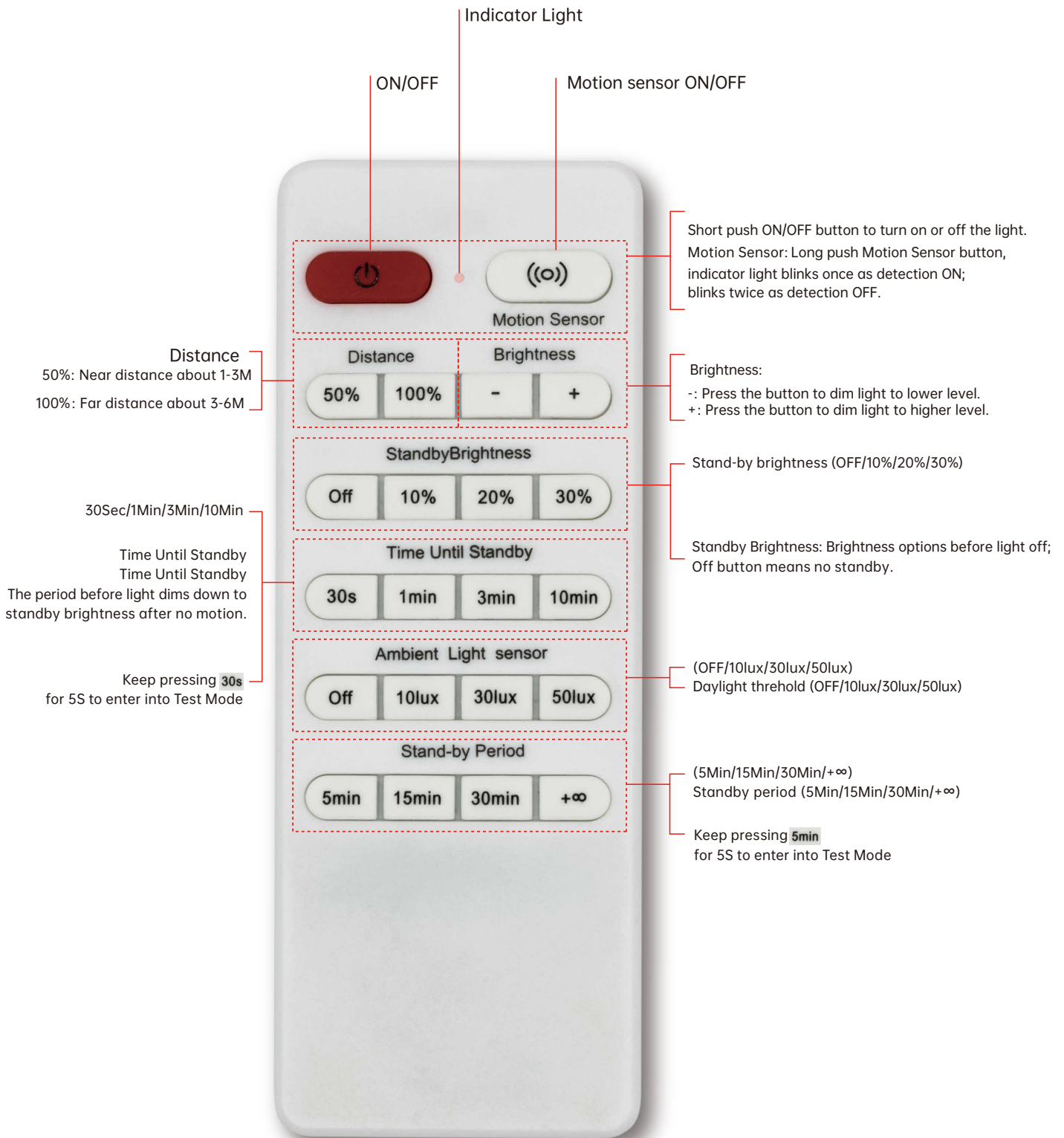
After holdtime, sensor dims light to standby dimming level for standby period.



The sensor turns OFF light automatically after the standby period when there's no motion detected.

Instruction of Remote Control

Model: HD20R



Remark:

Indicator light on the remote will blink once every time it successfully delivers command.