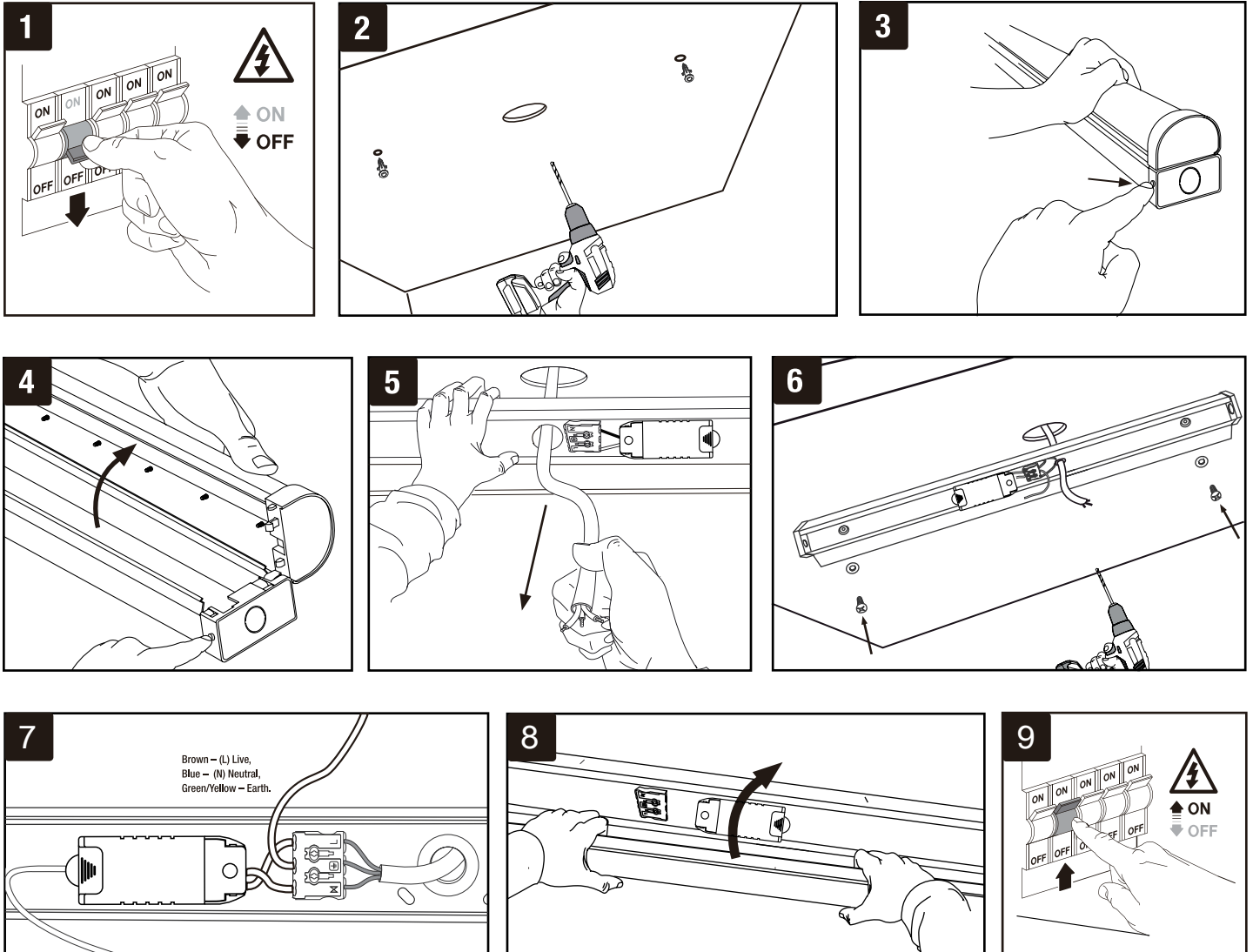




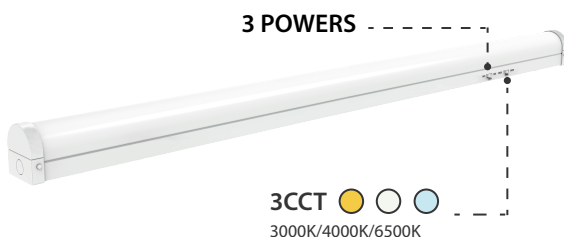
LED Nova Batten Light Installation Instructions



Please Note:

- * Turn off and isolate the electrical supply before connecting this fitting to the building wires.
- * Must be installed or connected by a licenced electrician.
- * The Luminaires are intended for indoor use only.

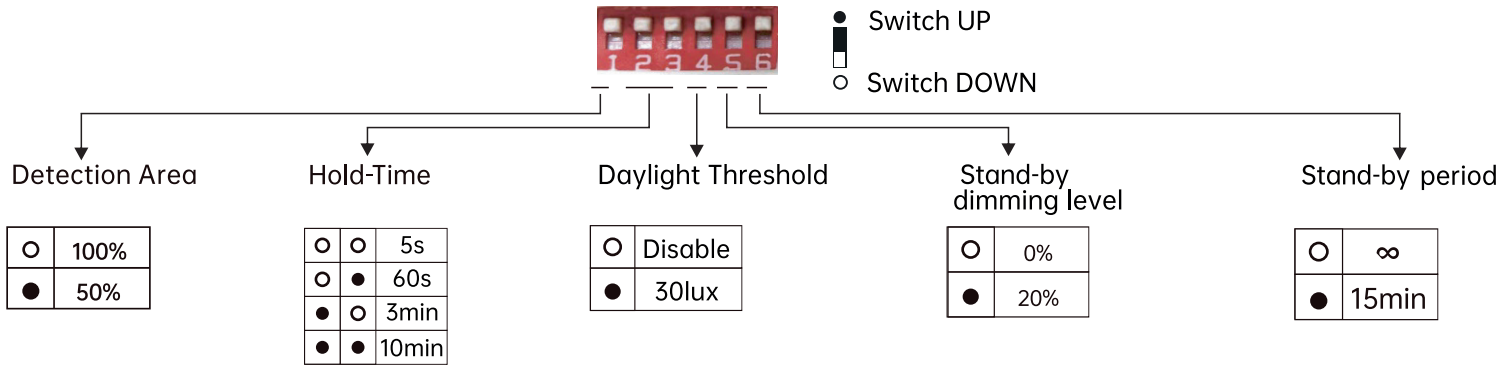
3 Powers & 3CCT:



Applications:

- Warehouses
- Supermarkets
- Shopping Malls
- Office Buildings
- Workshops
- Car Parks

SENSOR SETTING (FOR SENSOR VERSION)



Detection area – The area in which movement is detected, triggering the sensor. 100% detection is also known as the maximum distance or area covered by the sensor.

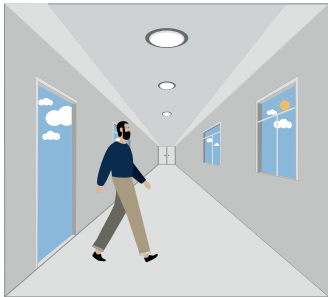
Hold time -The period when the light is at 100% brightness after moving object leave the detection area.

Daylight Threshold – The ambient brightness surrounding the light, the light will only triggers if the ambient brightness is lower than the preset level. If set on ‘disable’, the light will trigger regardless of the surrounding ambient brightness.

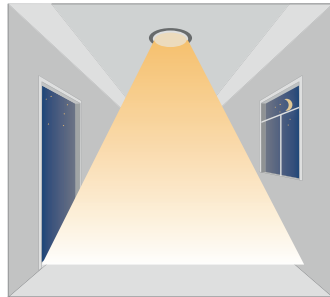
Standby Dimming level – A low output when on Standby.

Standby Period – A low output period before it’s completely switched off. When preset as “∞”, the light will maintain a constant low output if no movement is detected and will not turn off.

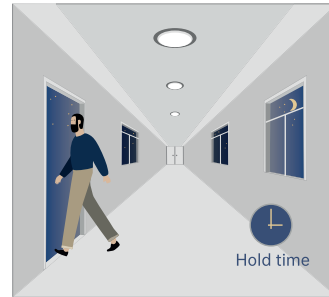
1. Automatically ON/OFF Function



With sufficient daylight, even when motion is detected, the light remains off.

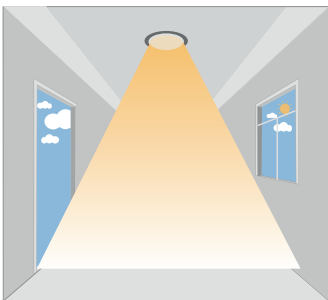


With insufficient daylight, the sensor turns the light on when motion is detected.



The sensor turns the light off automatically after the hold time when there’s no motion detected.

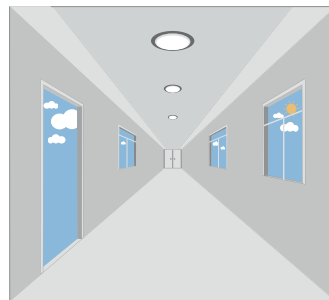
2. Daylight Disable



The sensor turns the light on when motion is detected.



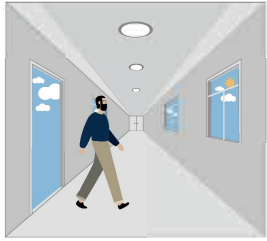
The sensor keeps the light on for the hold time after moving object leaves the detection area.



The sensor turns the light off automatically after the hold time.

When the daylight threshold is preset as ‘disable’, the sensor turns the light on when motion is detected, and off after the hold time.

3. Corridor Function, Bi-level Dimmable



With sufficient daylight, even when motion is detected, the light remains off.



With insufficient daylight, the sensor turns the light on when motion is detected.



When there's no motion detected, the sensor keeps the light on at 100% for the duration of the hold time.



After the hold time, the sensor dims the light to standby dimming level for the duration of the standby period.



The sensor turns the light off automatically after the standby period, when there's no motion detected.

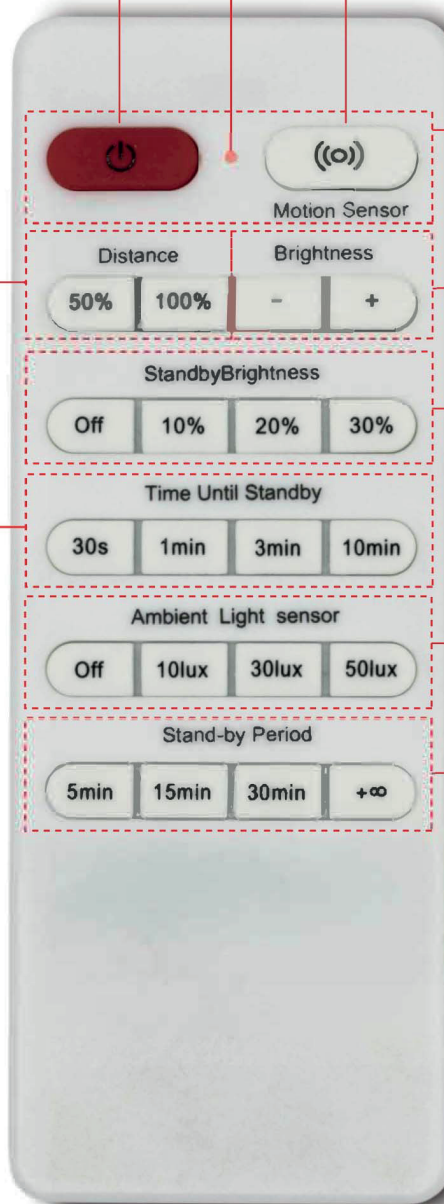
Instruction of Remote Control

Model: HD20R

Indicator Light

ON/OFF

Motion Sensor ON/OFF



Short press ON/OFF button to turn on or off the light

Motion Sensor:
Long press Motion Sensor button
Indicator light blinks once for detection on
Blinks twice for detection off

Brightness:
-: To lower the level of brightness of the light
+: To increase the level of brightness of the light

Standby Brightness
(OFF/10%/20%/30%)

Standby Brightness: Brightness options before light off; Off button means no standby

Daylight threshold
(OFF/10lux/30lux/50lux)

Standby period
(5Min/15Min/30Min/+∞)

Press and Hold **5min** for 5 seconds to enter Test Mode

Distance

50%: For detection distance of about 1-3M
100%: For detection distance of about 3-6M

Time till standby
30Sec/1Min/3Min/10Min

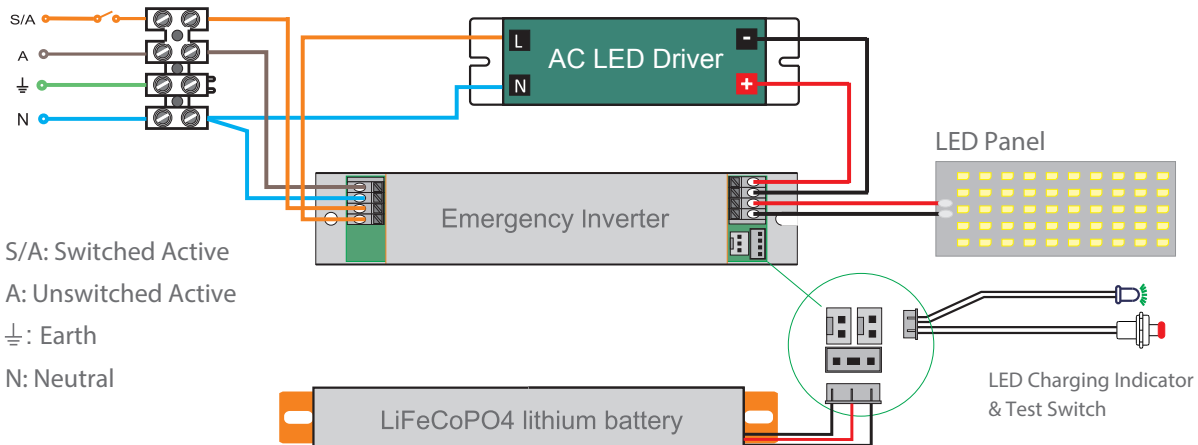
Time Until Standby
The period before light dims down to standby brightness after no motion

Press and Hold **30s** for 5 seconds to enter Test Mode

Note:
The indicator light on the remote will blink once every time it successfully delivers the command.

Before installation, please read the instructions completely and carefully.

Wiring Diagram (For Emergency Version)



Testing

When luminaire is permanently connected to mains supply, allow the luminaire to fully charge for 24 hours. Conduct following tests once the battery has fully charged:

Test 1:

A commissioning discharge test must be carried out once the luminaire is connected to mains supply. The emergency luminaire must remain illuminated for at least 2 hours after disconnection from the mains power. NOTE: The luminaire works on standard power when connected to mains supply and switches to 3.5W power during emergency mode operation.

Test 2:

Subsequent tests, performed every 6 months, require the luminaire to successfully operate in emergency mode for 90 mins. NOTE: A record shall be maintained of all the discharge tests performed on site at all times.

Test Switch and LED Indicator:

The Test Switch and LED indicator on the luminaire provide an indication of the status of the luminaire during testing and normal operation.

Test Switch & LED indicator	ON	OFF
	<ul style="list-style-type: none"> Depress the test switch-luminaire will operate in Emergency mode LED indicator will be off during Emergency mode 	<ul style="list-style-type: none"> On releasing the Test switch the luminaire will automatically connect to mains supply LED indicator will illuminate
	<ul style="list-style-type: none"> Luminaire is working on mains supply 	<ul style="list-style-type: none"> Luminaire is working in Emergency mode Luminaire has malfunctioned