

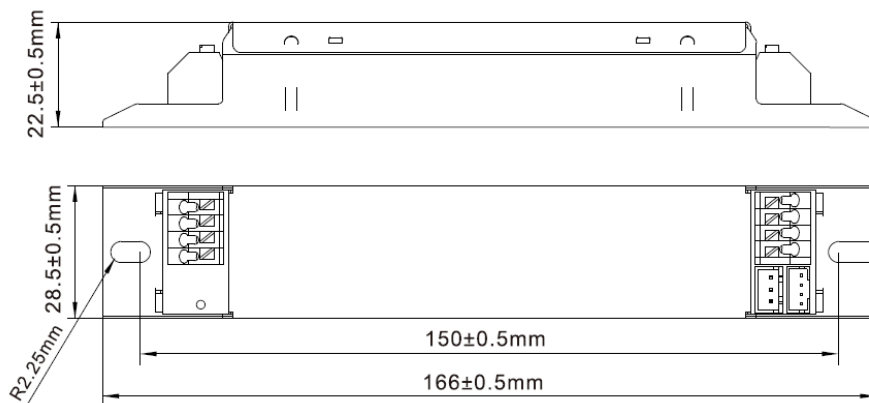


## Features

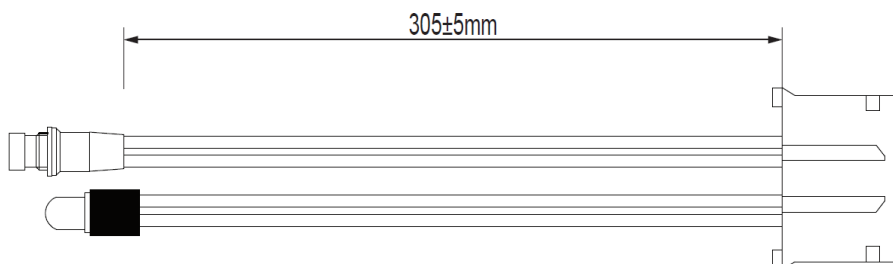
- For LED modules with a forward voltage of 60-300Vdc
- For maintained or non-maintained emergency lighting systems
- Conforms to EN 61347-1 and EN 61347-2-7
- Wired between driver and LED module via internal terminals
- Suitable for use in luminaires for high-risk task area lighting
- Voltage change-over threshold according to EN 60598-2-22
- 3 hours rated duration
- LiFePO4 battery pack
- Over-charge, over-current, short-circuit and deep discharge protection for battery
- Green charging status LED
- Test Button for a quick functional test
- For built-in

## Dimensions

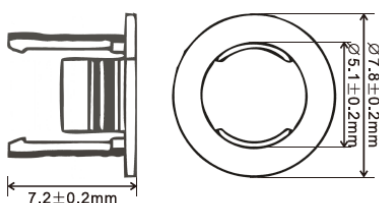
### Emergency Module



### Indicator & Test Button Cable

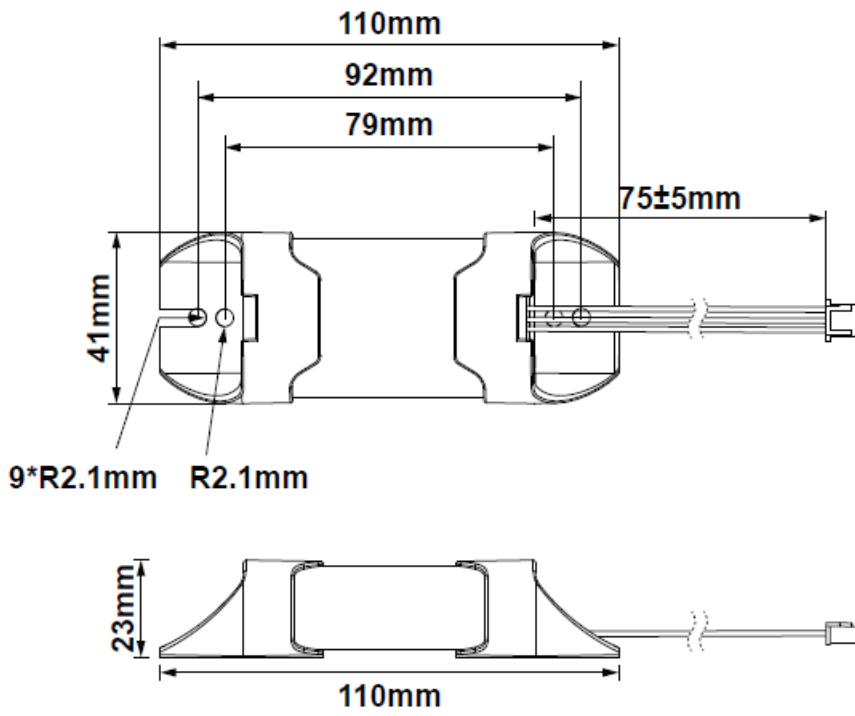


### Indicator Holder



# Battery Pack

LFP6502-S18



## Specifications

Output Wattage	<b>3.5W</b>
Input Voltage	220-240Vac 50/60Hz
Input Current (max)	15mA
Output Voltage	60-300Vdc
Output Current	8-40 mA
Open Circuit Voltage	310Vdc
Maximum Working Voltage	310Vdc
Protection	IP20, For built-in installation
Input to Output Protection	Double Insulation
Emergency Operation Time	>3 h
Emergency Onversion Time	<1s
Test Function	Manual
Length x Width x Depth	168 x 32x 23mm
Input Connection	Push-fit terminals 0.5-1.5mm <sup>2</sup>
Output Connection	Push-fit terminals 0.5-1.5mm <sup>2</sup>
Maximum Case Temperature	75°C
Ambient Temperature Range	0 to 50°C

Notes: Not suitable for use on a battery supply with a trickle or intermittent re-charging circuit. The emergency module is not protected against supply voltage polarity reversal.

## Battery Pack

Battery Code	<b>LFP6502-S18</b>
Battery Type	LiFePO4 18650
Battery Capacity	<b>3600mAh</b>
Battery Voltage	3.2V
Battery Charge Voltage	3.6 Vdc
Battery Charge Current	250mA
Battery Discharge Voltage	2.5-3.6 Vdc
Battery Discharge Current	850-950mA
Charging Time	>24h
Battery Life	5 Years

## Order Codes

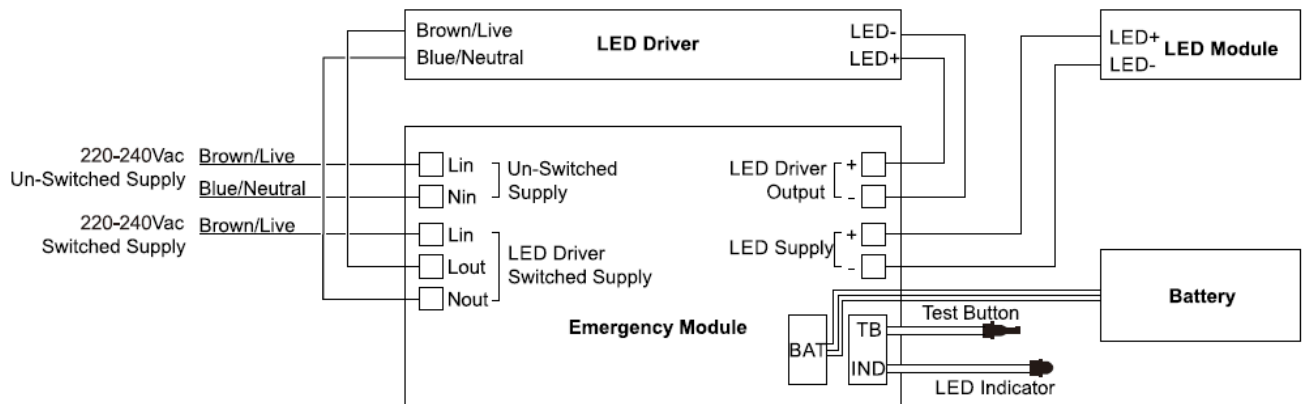
Order Code	Description
<b>ANI03-30/MC</b>	<b>α-ni Standard, 3.5W</b> output wattage, <b>3.0hours</b> emergency operation time, <b>LFP6502-S18, Built-in</b>

## Customizable Accessories

Type	Description
<b>LED indicator &amp; Test button cable</b>	<b>green status LED indicator and Test button cable with 4-pole plug</b>
<b>Extension cable batteries</b>	<b>Extension cable batteries with 3-pole plug, available in 75mm or 130mm</b>

## Wiring Diagram

Driver output current  $\leq 0.8A$



Drive output current  $> 0.8A$

