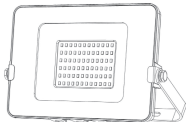


INFINITY LED FLOODLIGHT



USER MANUAL



Infinity Series LED Floodlights User Manual

Important Information:

These instructions contain safety information, read and follow them carefully. We will not accept any responsibility for injury, damage or loss which may occur due to incorrect installation, operation or maintenance.

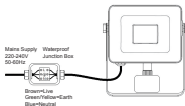
Warning:

To avoid the risk of fire, explosion, or electric shock, this product should be installed, inspected, and maintained by a qualified electrician only, in accordance with all applicable electrical codes.

Safety Instructions:

- Be certain electrical power is OFF before and during installation and maintenance.
- Make sure the supply voltage is the same as the rated luminaires voltage.
- Changes of the design and modifications to the LED luminaire are not permitted.
- Observe the national electrical safety rules and regulations during installation.

Installation Diagram:



Dimensions:

Model	Size (L*W*H)
10W	110x90x20mm
20W	110x90x20mm
30W	140x110x25mm
50W	200x145x27mm
70W	215x157x25mm
100W	275x205x30mm
150W	313x233x30mm
200W	380x282x40mm

* Dimensions given are for the main body of the light without bracket or sensor attached.

INF-S SERIES

- Ultra slim design and super bright light output.
- Anti-glare: corrugated cut glass to prevent glare, while also protects the eyes.
- Available in single light output 6000K and tri-colour (3000K+4000K+6000K).

Tri-colour Function:

1. Default when first turned on would be Daylight (6000K).
2. Turn off unit and switch unit back on within 3 seconds to give Warm White (3000K).
3. Turn off unit and switch unit back on again within 3 seconds to give Neutral White (4000K).



INF-C SERIES

Variation of colours (Amber, Blue, Green, Red, Purple, RGB), ideal for mood lighting.

RGB IR Remote Control:

- The floodlight is controlled by the IR remote control (included). Please ensure the remote control aims at the lamp when changing colours or modes.
- Control distance: 3-5 metres.
- The model comes with Memory Function allowing the unit to come back onto the last setting before unit was switched off.

ON/OFF Button - Switch the unit on/off.

Brightness - Increase/Decrease the brightness.

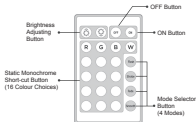
Static Monochrome - Use the buttons to directly select the desired colour (16 choices).

Flash - Automatic change of colours (fast).

Stroke - Automatic jumping change of colours (slow).

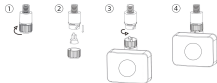
Fade - Fast automatic change of colours with blending effect.

Smooth - Slow automatic change of colours with blending effect.



INF-P SERIES

Advanced Push-FR PIR Motion Sensor



- Before fitting a sensor, turn off and isolate the floodlight to be worked on by removing the fuse or switching the circuit breaker off at the distribution board.
- Rotate the cap on sensor mounting anticlockwise a ¼ turn and remove (1).
- Pull out the blanking plug (2).
- Align the pins on the sensor with the holes, taking care that the bump on the inside of the collar also lines up with the slot on the mounting, then push to fit and rotate the collar clockwise a ¼ turn to seal (3).

PIR Setting

- The **Time** the light is on can be set between approximately 7 seconds (±3sec) to 7minutes(±2min). Any time movement is sensed the time delay is reset.
- The **Sensitivity** can be set to detect movement (8m±2m) within a 120° angle.
- The **Lux** level sets the daylight threshold for the light to work and can be set between dark and daylight (<10-2000lux).

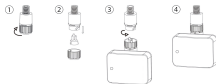
The **Time**, **Sensitivity** and the **Lux** level are adjusted with the dials on the PIR sensor:

- Turn the **TIME** dial anticlockwise to decrease the hold time (7 seconds – 7 minutes).
- Turn the **SENS** dial anticlockwise to decrease the detection range (8m±2m).
- Turn the **LUX** dial anticlockwise to restrict activation to lower light conditions (<10-2000lux).

Note: When first switched on, the light will come on for approx. 20 seconds before entering sensor mode.

Advanced Push-Fit Dusk Till Dawn Sensor

The Dusk Till Dawn sensor will automatically switch the floodlight on when the ambient light level drops below 10Lux and turn off when it rises above 40Lux. To fit the sensor, refer to PIR installation (Page 2).



Specifications:

- Power Source: 220-240VAC
- Power Frequency: 50-60Hz
- Ambient Light: <10LUX (ON) >40LUX (OFF)
- Working Temperature: -20~+40 Degrees
- Working Humidity: <93%RH

Note:

- Ensure there are no obstructions affecting natural light reaching the unit.
- There should be no swaying object in front of the sensor.

Installation Recommendation:

We would advise, before permanently installing the light, is to turn the unit on and pre-select the desired colour output (Page 1). Especially, if you have multiple units on a single switch, in an event that one unit may have a different sequence preset. For example, if you have 3 units installed onto a single switch, if colours on each are not pre-selected, they may differ from one another, you would not be able to synchronise the 3 units as they all have memory function.