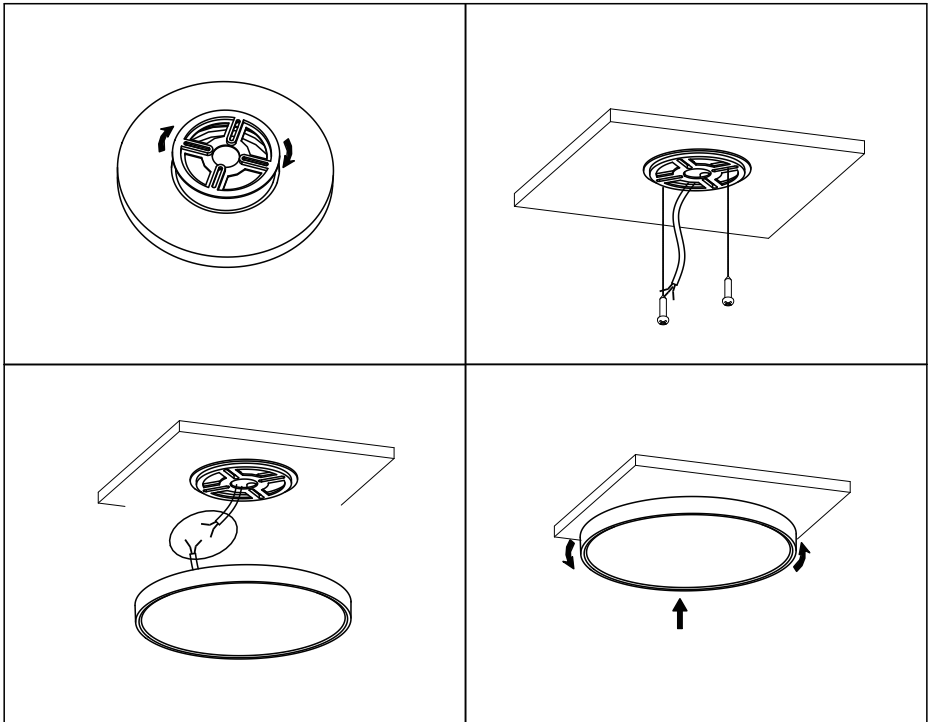


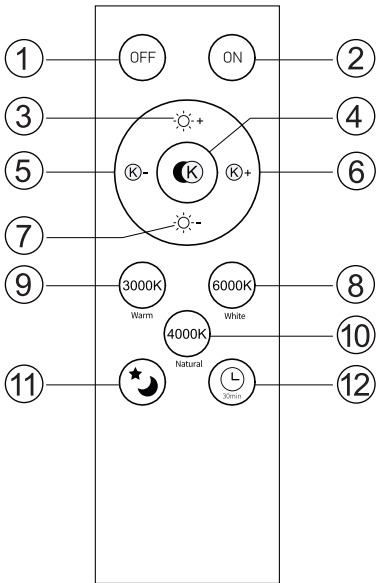
## Attention:

01. This lamp must be installed/dismantled by a qualified electrician.
02. The input voltage to the driver inside of the lamp is AC220-240V 50Hz.
03. Ensure the power is switched off before installation/dismantling/maintenance.
04. Check power cable is properly connected before switching the lamp on.
05. Always follow the fire code (NFC/UFC) and allow at least 7.5cm space for ventilation.
06. Do not install the lamp on combustible, plaster board, sloping, or damaged surface.
07. Under no circumstances should the lamp be covered with insulation blankets or any other similar materials.
08. Do not wipe lamp with damp or wet cloth.

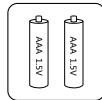
## Installation Instruction:

01. Unscrew the installation plate from the lamp.
02. Fix installation plate to ceiling/wall with screws.
03. Connect the utility supply (L for Live wire, N for null wire).
04. Fix the lamp to the installation plate.





**Wall Switch**  
Without the remote control, the color temperature can also be changed by the wall switch.



**NOTICE:**

2 X 1.5V(AAA) Batteries are needed but not included in the remote control.

1		Turn off
2		Turn on
3		Brightness +
4		Color Temperature Switch Mode(3000K/4000K/6000K)
5		Color Temperature -
6		Color Temperature +
7		Brightness -
8		Cold White
9		Warm White
10		Natural White
11		Night Light Mode
12		Auto turn off after 30 Mins