

Project Kahn®
Brochure System

Lamborghini Urus
programme



Lamborghini Urus 19—Present

Exterior

Arches
Bumpers
Winglets

Accessories

Wheels

Project Kahn® Tailored Conversion Programme
Sant'Agata - (Utilising the worlds finest substrates).





URUS
THE SANT'AGATA
CONVERSION

TAILORED CONVERSIONS | P.4



THE SANT'AGATA CONVERSION





Introducing The Lamborghini
Urus Sant'Agata System.

Showcasing the painstaking
craftsmanship that goes into
creating this collection of
exceptional parts to make your
Urus truly yours.









URUS: THE SANT'AGATA

CONSISTS OF:

- 1 23" RS-FORGED TYPE 53 WHEELS
- 2 VENT WINGLETS IN ABS
- 3 FRONT WIDE WHEEL ARCHES IN ABS
- 4 REAR WIDE WHEEL ARCHES IN ABS
- 5 FRONT BUMPER LOWER VALANCE IN ABS

SEE GALLERY PAGES 4-15

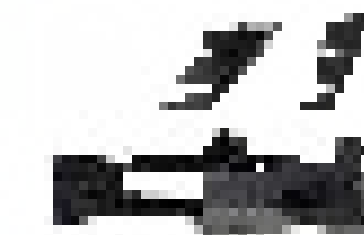
4 REAR WIDE WHEEL ARCHES IN ABS



3 FRONT WIDE WHEEL ARCHES IN ABS

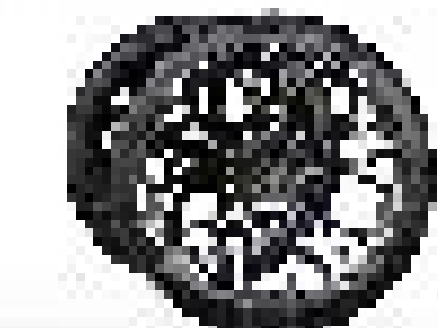


2 VENT WINGLETS IN ABS



5 FRONT BUMPER LOWER VALANCE IN ABS

1 23" RS-FORGED TYPE 53 WHEELS



Exterior package system

01



EXTERIOR PACKAGE SYSTEM



The next level

Exterior package system

Project Kahn®
Brochure System

Exterior package system



FRONT VENT WINGLETS
MATERIAL: ABS COMPOSITE
PART NUMBER: BKBLU2AB

Lamborghini Urus programme
18-Present



Wheel programme
RS-Forged

02



WHEEL PROGRAMME

Wheel programme



TYPE 53 RS-FORGED
SIZE FRONT WHEEL: 10" X 23"
SIZE REAR WHEEL: 11.5" X 23"
COLOUR: SATIN BLACK
PART NUMBER: WAKTF1267S1R/WAKTR1157S1R



Wheel programme



TYPE 53 RS-FORGED

SIZE FRONT WHEEL: 10" X 23"
SIZE REAR WHEEL: 11.5" X 23"
COLOUR: DIAMOND CUT | GLOSS BLACK
PART NUMBER: T631035B01D/T631135B01D



Wheel programme



TYPE 53 RS-FORGED
SIZE FRONT WHEEL: 10" X 23"
SIZE REAR WHEEL: 11.5" X 23"
COLOUR: SATIN BLACK/DIAMOND CUT TINT
PART NUMBER: T53103SB01D17/T53113SB01DT



Project Kahn®
Brochure System

Lamborghini Urus
programme

