

CHELSEA TRUCK COMPANY
LAND ROVER DEFENDER (2020 ONWARDS)
REAR ROOF WING FITTING INSTRUCTIONS

It is important to read all instructions before fitting
We recommend you use a professional
body shop for the fitting and painting of this product, in
order to achieve the best results.



STEP 1 - PREPARING THE VEHICLE

Part A shown below in Fig 1, is designed to fit a Land Rover Defender (2020 onwards).

Before fitment of your new Chelsea Truck Company Roof Wing, make sure all contact surfaces on the vehicle body are completely clean. They must be cleaned free of any dust, waxes or grease with Isopropyl alcohol (Propan-2-ol) to allow proper adhesion of the parts.



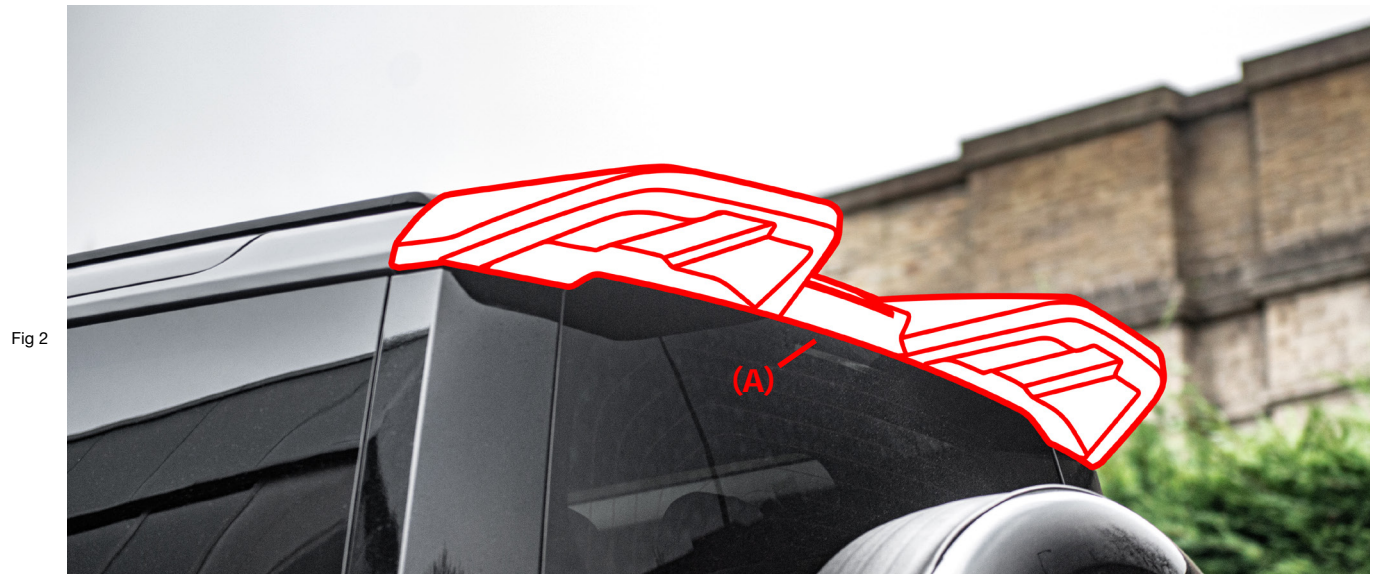
Fig 1

CHELSEA TRUCK COMPANY
LAND ROVER DEFENDER (2020 ONWARDS)
REAR ROOF WING FITTING INSTRUCTIONS

It is important to read all instructions before fitting
We recommend you use a professional body shop for the fitting and painting of this product, in order to achieve the best results.

STEP 2 - TESTING THE PARTS

Before proceeding with the preparation of the part, it requires test fitting - As shown below in Fig 2.



The part should slot into place perfectly; however, some slight movement is available to adjust position where necessary.

STEP 3 - PAINTING THE PART

Painting of this part is optional and it can be fitted without any preparation to the visible surface. However, if the part is to be painted, please follow these instructions.

We advise that your body shop use filler primer first, to seal the part before final primer and painting. We also strongly advise that paint is not oven-cured.

If any parts on the vehicle itself are to be painted (such as the roof), this should be done before fitting the kit to ensure all areas are covered.

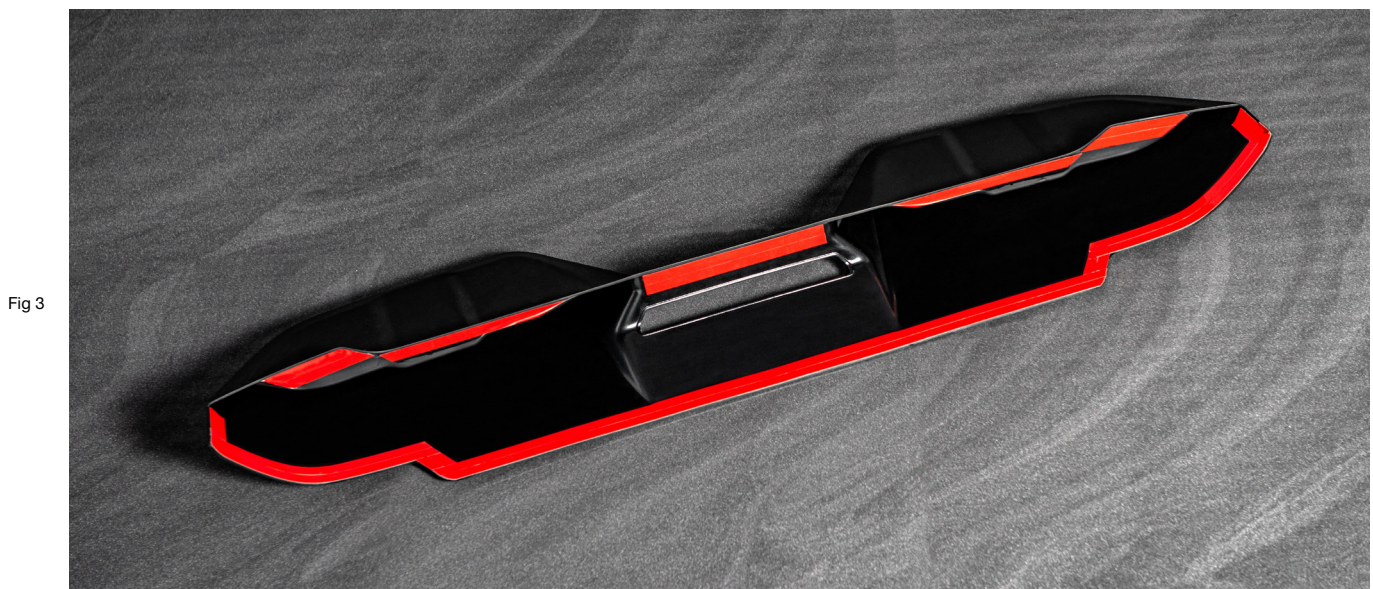
Please consult your professional body shop or A Kahn Design Limited for further advice, if required.

STEP 4 - FITTING THE PART

After painting (if applicable), test the part once more to check the fit (as per Step 2). Bear in mind that paint may have added thickness in places, which may necessitate slight positional adjustment of the parts.

The part is lightweight, which offers many benefits including the ability to fix in place without the need for additional bracing or screwing into the body of the car.

Each component includes automotive grade 3M fixing tape covered with red tape seals - see Fig 3 below.



CHELSEA TRUCK COMPANY
LAND ROVER DEFENDER (2020 ONWARDS)
REAR ROOF WING FITTING INSTRUCTIONS

It is important to read all instructions before fitting
We recommend you use a professional
body shop for the fitting and painting of this product, in
order to achieve the best results.

STEP 4 - FITTING THE PARTS (CONTINUED)

Ensuring that all contact surfaces on the car body have been cleaned as per Step 1, apply 3M tape primer to each contact surface, paying particular attention to areas X and Y in Fig 4, below.

If you intend to use the 3M Primer 94 Ampule supplied with this product, rather than 3M tape primer obtained elsewhere, shake the ampule well before use, then squeeze hard in the middle of the ampule until you hear a popping noise which indicates that the inner vessel has been broken and that the tape primer has begun to dispense itself to the applicator tip.

Fig 4



After the tape primer has set, remove the red tape seals and fit the part, ensuring that at least 5KG of force is applied fully along each length of tape that is in contact with the car body.

The Chelsea Truck Company Roof Wing has now been fully installed.

Fig 5



CHELSEA TRUCK COMPANY
LAND ROVER DEFENDER (2020 ONWARDS)
REAR ROOF WING FITTING INSTRUCTIONS

It is important to read all instructions before fitting
We recommend you use a professional
body shop for the fitting and painting of this product, in
order to achieve the best results.

STEP 5 - MAINTENANCE

We hope that you enjoy your new Chelsea Truck Company product. You should try to keep exposure to extreme temperatures to a minimum. If the part have been painted, look after your paintwork in accordance with the vehicle manufacturer's recommendations. Take particular care with matt paint, avoiding polishes and any abrasive compounds. For further information, please contact A Kahn Design Limited.

STEP 6 - EXTRA NOTES

This product is designed to fit the Land Rover Defender (2020-onwards). For confirmation on which models or model variants our products fit, please contact us directly or speak to your Kahn dealer.