

PAX 3 QUICK START GUIDE

LOAD MATERIAL

LOOSE LEAF

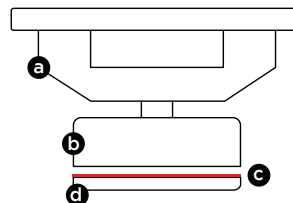
Remove oven lid located on the bottom of device. Use multi-tool to firmly pack ground material inside of oven until at least halfway full. Replace oven lid back on device. For a more efficient session with less material, use the half pack oven lid.

LOAD MATERIAL

CONCENTRATE INSERT

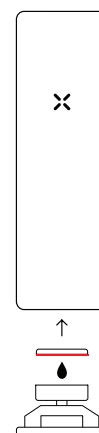
Oven lid replacement to use PAX with concentrate.

- a. End piece
- b. Chamber
- c. O-ring (underside of chamber lid)
- d. Chamber lid



USING THE CONCENTRATE INSERT

1. Ensure PAX oven is material-free before using insert.
2. Place small amount of concentrate into chamber. Avoid allowing concentrates into the two chamber tubes.
3. Replace chamber lid. Insert end piece into PAX oven.
4. Turn PAX on and let heat for at least 30 seconds before vaporizing.
5. When finished, turn off PAX and allow to cool for 2-3 minutes before removing insert.



POWER ON

Turn on PAX 3 with a quick press down in the middle of mouthpiece, located at top of device. The LED lights will begin to pulse purple, indicating oven is heating. Once LED lights turn green, PAX 3 is ready for use.



HEATING UP



READY

Inhale with a gentle, cigar-like draw.

POWER OFF

To turn off PAX 3, quickly press down again in the center of mouthpiece. The LED lights will turn off. PAX will also automatically turn off after 3 consecutive minutes of non-use.

BATTERY AND CHARGING

To see battery level, gently shake device. White LED light petals will light up to indicate how much battery is available. The more petals lit, the more charge PAX 3 has.

To charge PAX 3, plug one side of USB cable into charging dock and plug the other side into a computer. Place device on dock. PAX 3 is charging when the LED light petals begin pulsing white.



0-25%



25-50%



50-75%



75-100%

PAX 3 is fully charged when all four petals stop pulsing and turn solid.

TEMPERATURE CONTROL

Enhance flavor profile of material and adjust vapor production by changing the temperature setting.

While device is powered on and showing purple or green lights, enter temp set mode by pressing down in center of mouthpiece for two seconds.

The LED light indicator will show the color of your current setting.



LOW



MEDIUM LOW



MEDIUM HIGH



HIGH

To select a temperature or change your current setting, cycle through the four different temperatures by quickly pressing in the center of the mouthpiece.

When desired temperature is reached and indicated on the LED, exit temperature set mode by again pressing down in the middle of the mouthpiece or by shaking the device.

CLEANING AND MAINTENANCE

PAX 3 works most optimally when the vapor path and oven screen are residue-free. Use the Maintenance Kit included to clean PAX 3. Use the wire brush for heavier cleaning or the pipe cleaners for lighter cleaning. Remove mouthpiece and insert brush or pipe cleaner into the vapor path, scrubbing back and forth. Ensure oven lid is also removed during cleaning.

Remember to replace screens every so often. More information on cleaning can be found at PAX.com

FOR A MORE COMPREHENSIVE MANUAL, VISIT PAX.COM

NOT FOR SALE TO MINORS

© 2016 PAX Labs, Inc. All rights reserved. PAX Labs, Inc. the PAX Labs logo, PAX and PAX logo are trademarks of PAX Labs, Inc. US and International Patents Pending.

Patent: www.pax.com/intellectual-property-list/

IMPORTER OF RECORD

PAX Labs, Inc

660 Alabama St. `Second Floor

San Francisco, CA 94110

PHONE NUMBER

US/CA: +1-844-334-4729

PAX 3 SAFETY GUIDELINES & LIMITED WARRANTY

PRODUCT LIABILITY STATEMENT

WARNINGS

- Keep your PAX and its components out of the reach of children and pets.
- Use your PAX only with legal plant and concentrate materials.
- Do not disassemble or tamper with your PAX. Any inappropriate, incorrect, or irresponsible use will void any warranty and can result in serious injury.
- Do not operate your PAX with the oven lid open or ajar as the oven is extremely hot when in use.
- Do not attempt to remove any contents from the oven or clean your PAX until the oven has completely cooled.
- Do not use your PAX without the mouthpiece on the device.
- Do not use your PAX if it appears to be damaged, broken or is operating in an unusual or erratic manner.
- Do not use your PAX if it is unusually hot to the touch.
- Do not expose your PAX to extremely high or low temperatures.
- Do not store your PAX or any of its components in or near heat sources.
- Do not use your PAX if it becomes immersed in any liquid.
- Do not place your PAX in a dishwasher, washing machine or dryer.
- Charge your PAX using a computer, powered hub or power supply that is certified by a recognized testing laboratory to avoid potential battery malfunction, explosion, or fire.
- Your PAX contains a Lithium-ion battery and should be recycled or disposed of in accordance with local requirements to avoid potential injury and/or environmental harm.
- Do not dispose of the battery or any component of your PAX in a fire as it could cause an explosion or other serious injury.

This device complies with part 15 of the FCC Rules. Operation is subject to the following two conditions: (1) This device may not cause harmful interference, and (2) this device must accept any interference received, including interference that may cause underside operation.

IMPORTANT: This equipment has been tested and found to comply with the limits for a Class B digital device, pursuant to part 15 of the FCC Rules. These limits are designed to provide reasonable protection against harmful interference in a residential installation. This equipment generates, uses and can radiate radio frequency energy and, if not installed and used in accordance with the instructions, may cause harmful interference to radio communication. However, there is no guarantee that interference will not occur in a particular installation. If this equipment does cause harmful interference to radio or television reception, which can be determined by turning the equipment off and on, the user is encouraged to try to correct the interference by one or more of the following measures:

Reorient or relocate the receiving antenna.

Increase the separation between the equipment and receiver.

Connect the equipment into an outlet on a circuit different from that to which the receiver is connected.

Consult the dealer or an experienced radio/TV technician for help.