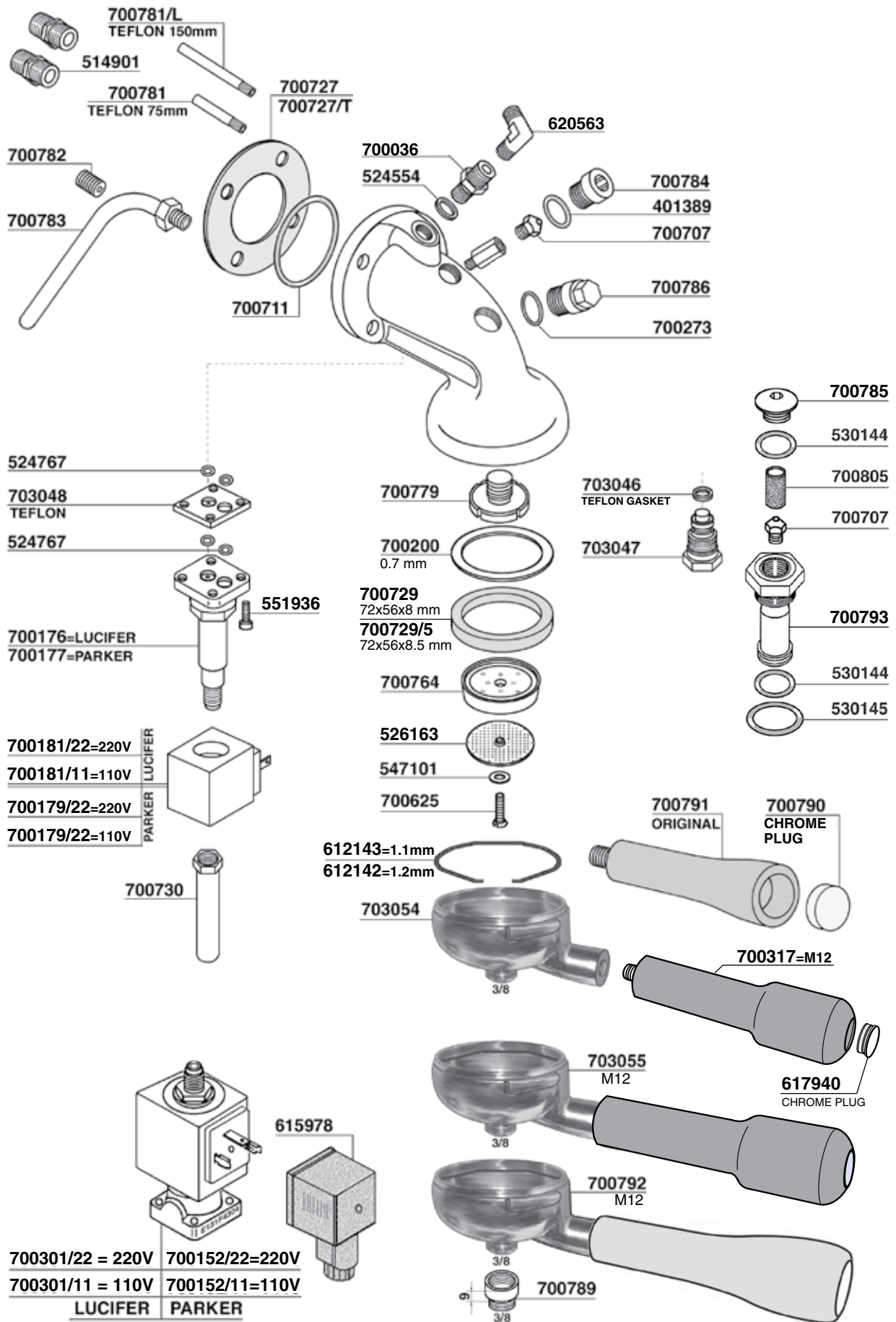


# ASTORIA

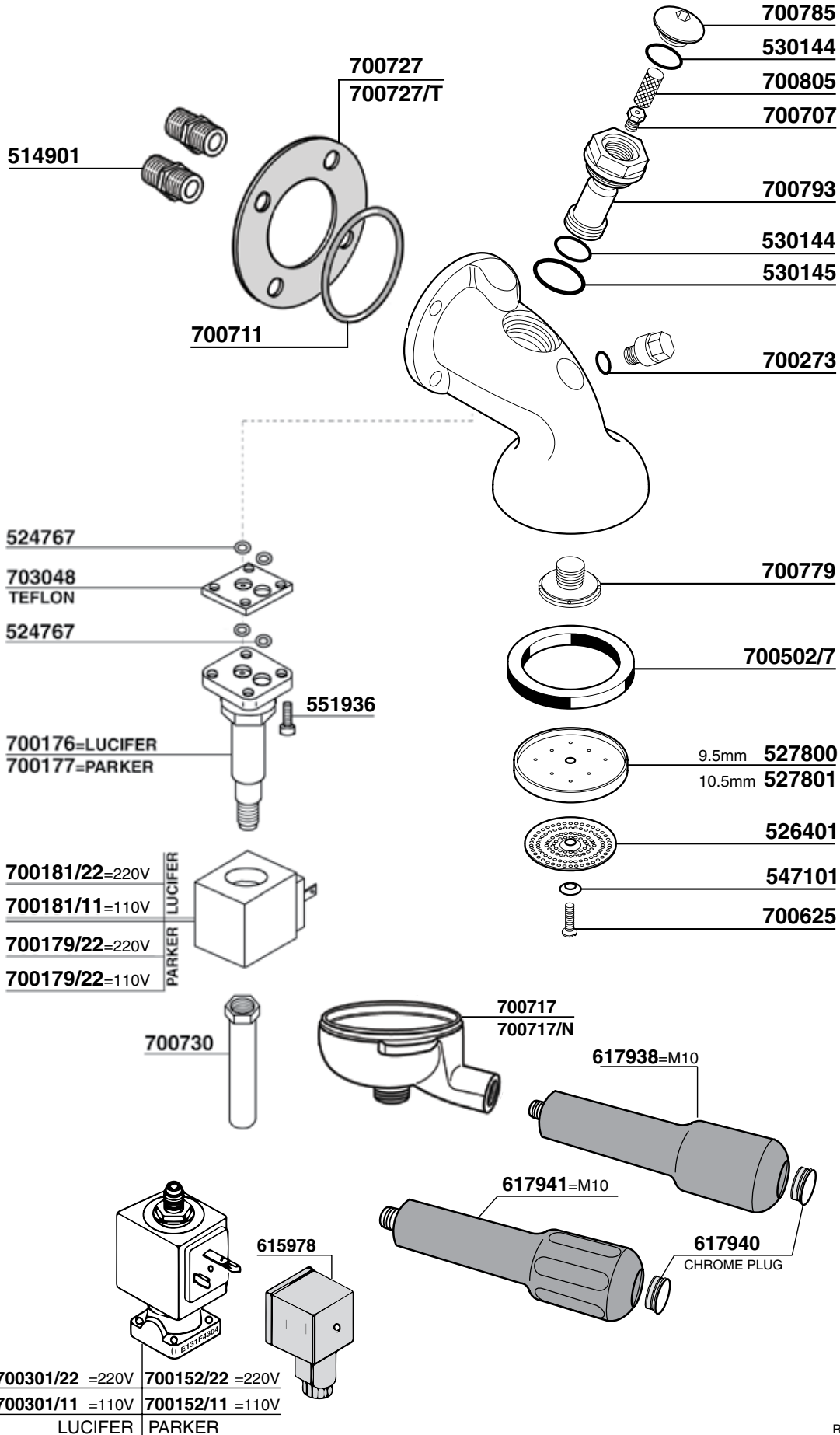


ASTORIA



© 2021 Progressive Marketing, Inc.

### PLUS 4 YOU



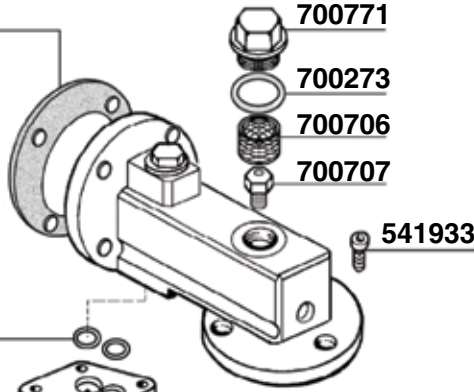
© 2021 Progressive Marketing, Inc.

ASTORIA

# ASTORIA



700727  
700727/T



524767

551934

700176 =LUCIFER  
700177 =PARKER

700181/22=220V

700181/11=110V

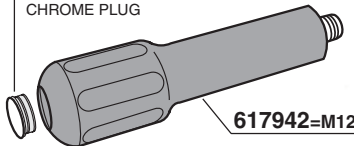
700179/22 =220V

700179/11 =110V

PARKER|LUCIFER

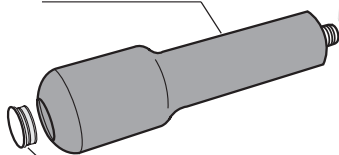
700730

617940  
CHROME PLUG



617942=M12

700317= M12



617940  
CHROME PLUG

700771

700273

700706

700707

541933

700711

700758

700200

700729

72x56x8 mm

700729/5

72x56x8,5 mm

700764

526163

547101

552349

526418 6gr

521835 7gr

521832 8gr

521833 7gr  
MICROHOLES

521997 14gr

521998 12gr

526757 21gr

521902

BLIND FILTER

612143 =1.1mm

612142 =1.2mm

700702  
M12

502003

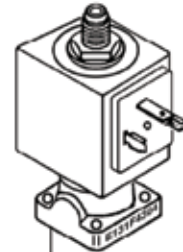
700024

511672

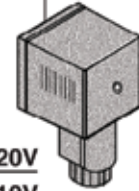
515073

511678

511674



615978



700301/22= 220V

700152/22=220V

700301/11= 110V

700152/11=110V

LUCIFER

PARKER



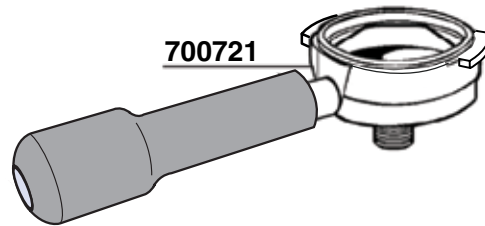
700728

700501 =66x56x6

700704 =CONICAL

621303 =O-RING

700721

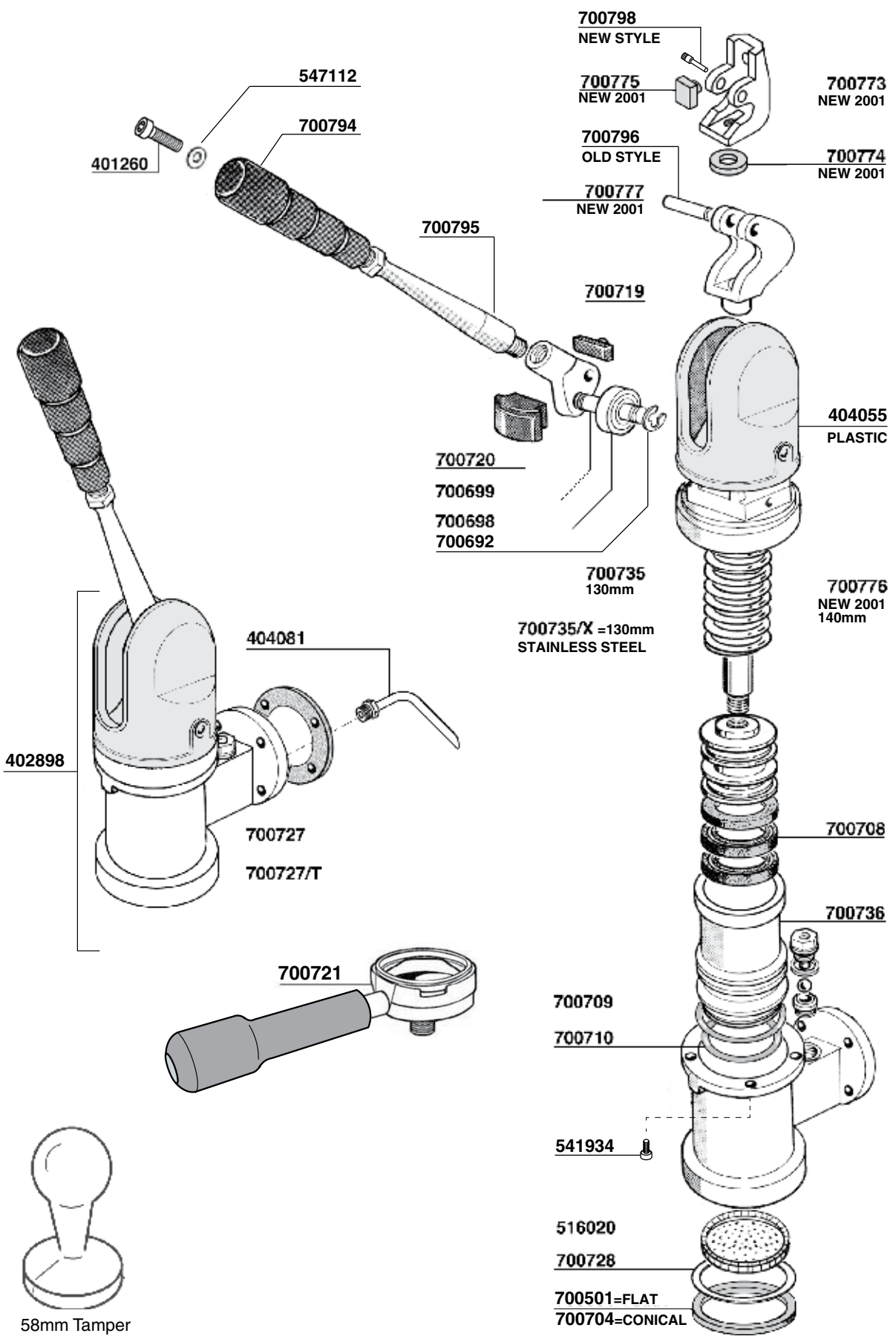


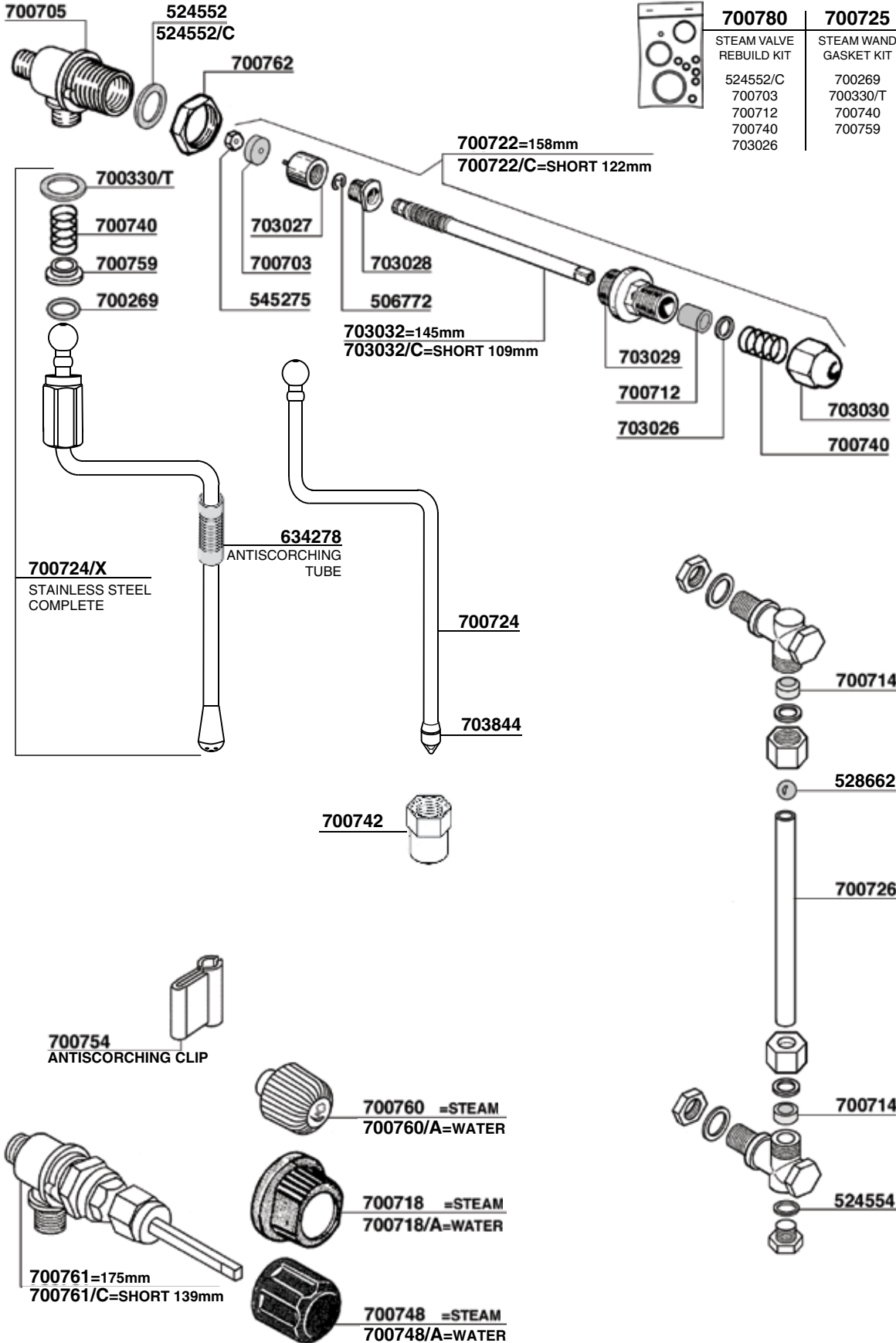
618522

511672/R

© 2021 Progressive Marketing, Inc.

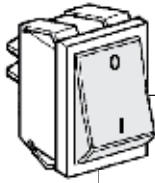
ASTORIA





ASTORIA

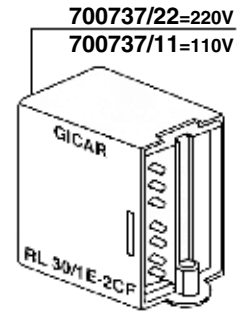
© 2021 Progressive Marketing, Inc.



**700429**



**703025**  
25A 0-1-2



**700737/22=220V**  
**700737/11=110V**

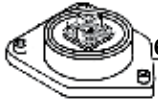


**613656**

**700769**  
32A 0-1



**615978/T**



**620405/C**

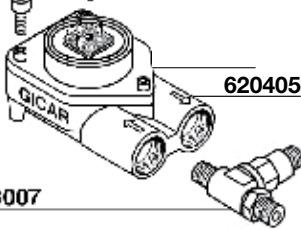
**551934**



**530143**



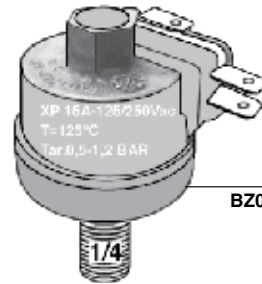
**617903/G**



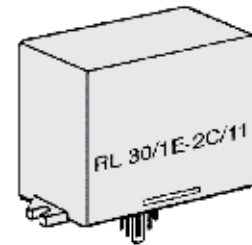
**703007**



**700749**  
20A 0-1



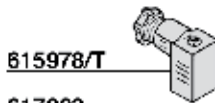
**700662**  
BZ02/35 PRESSURESTAT



**700574/22=220V**  
**700574/11=110V**



**401920**

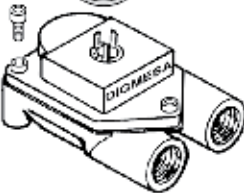


**615978/T**

**617903**

**530143**

**551934**



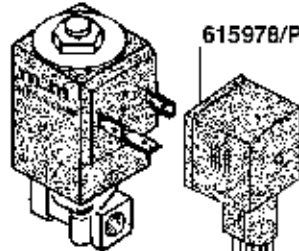
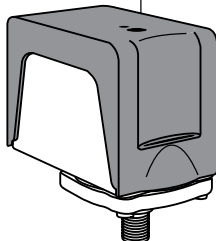
**700621**

**700648/11 =110/60V**  
**700648/22 =220/50/60V**  
**700648/24 =24/50/60V**



**700464**

**616597 CE/UL**



**615978/P**

**700253/22 =220V**  
**700253/11 =110V**



**612601**  
120mm

**524554**

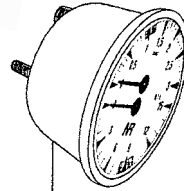
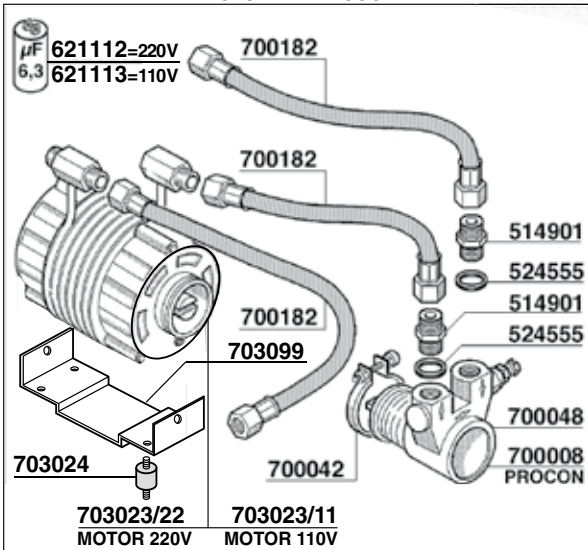


700111/A

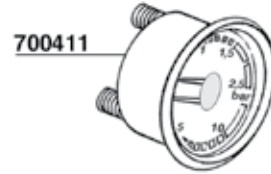


700111/Z

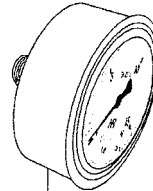
MOTOR WATERCOOL



703083

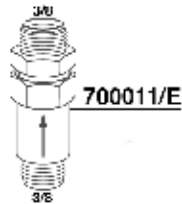
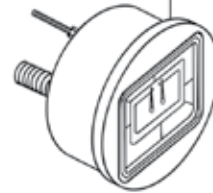


700411

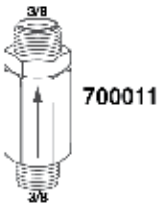


703084

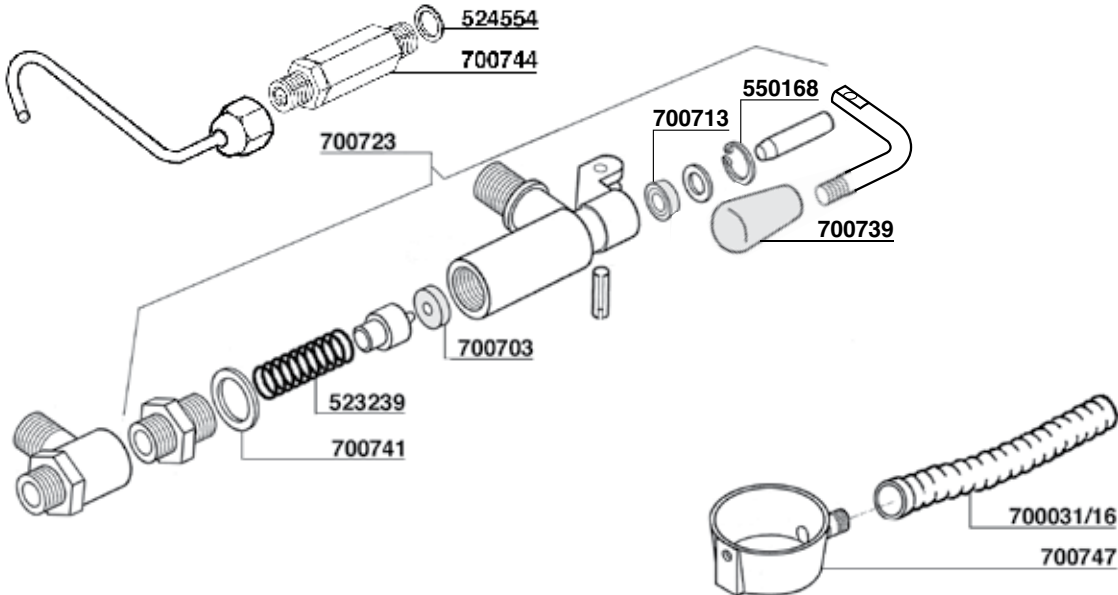
700701=2 SCALE  
700768=1 SCALE



700011/E

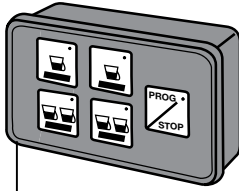


700011

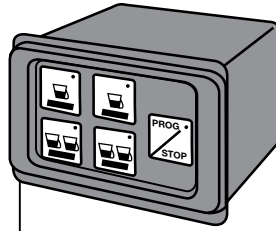


ASTORIA

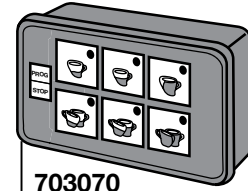
© 2021 Progressive Marketing, Inc.



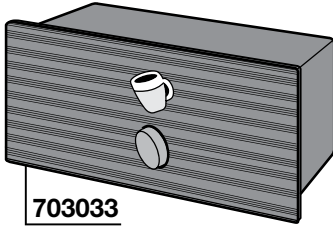
**700752**  
TOUCHPAD 8.5.68.86/A



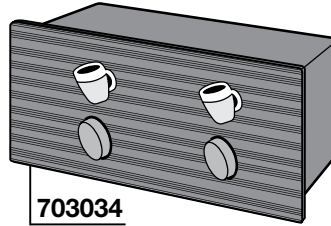
**700753/11** 110V  
**700753/22** 220V  
TOUCHPAD - ELECTRONIC BOX



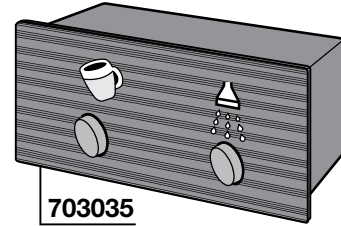
**703070**  
TOUCHPAD - TIMER  
8.5.68.88



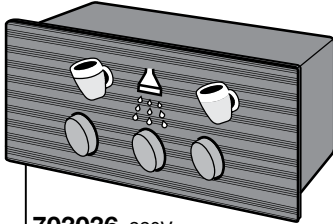
**703033**  
MANUAL TOUCHPAD



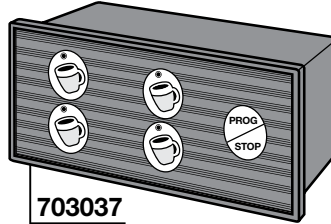
**703034**  
MANUAL TOUCHPAD



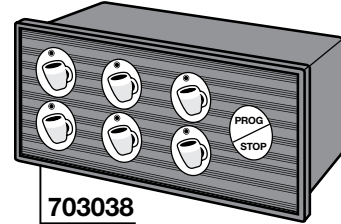
**703035**  
MANUAL TOUCHPAD



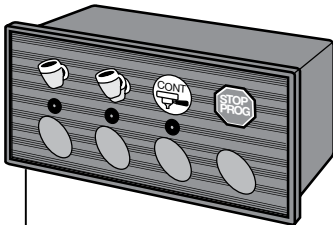
**703036** 220V  
MANUAL TOUCHPAD



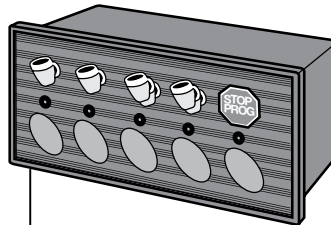
**703037**  
TOUCHPAD



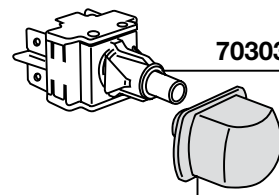
**703038**  
TOUCHPAD



**703039** 220V 50/60 Hz  
TOUCHPAD - TIMER - LEVEL



**703040** 220V 50/60 Hz  
TOUCHPAD - TEA - LEVEL



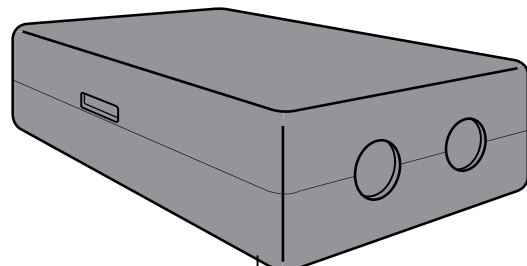
**703031**  
**703059**  
CHROME PLATED



**703073**  
9.5.33.36G00  
PERLA 110V

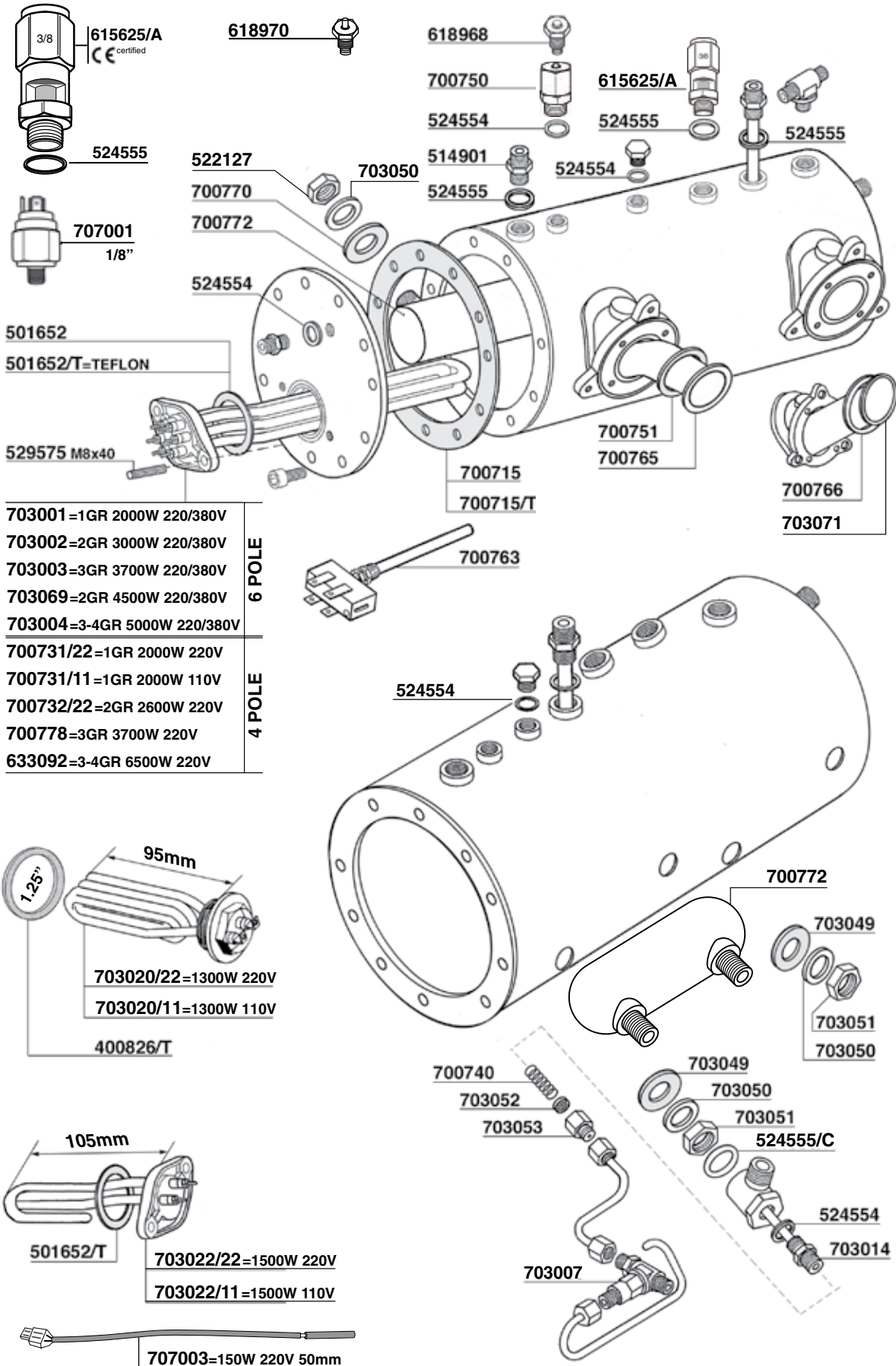


**700799**  
DISPLAY P4Y-09

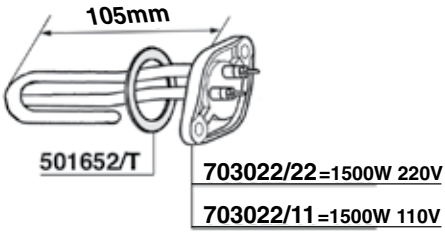
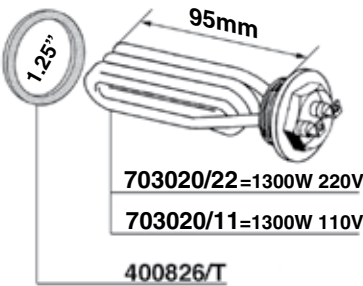


**703041** 220V  
**703042** 110V  
DIVINA ELECTRONIC BOX  
1/2/3 GROU IPS





- |                                    |               |
|------------------------------------|---------------|
| <b>703001=1GR 2000W 220/380V</b>   | <b>6 POLE</b> |
| <b>703002=2GR 3000W 220/380V</b>   |               |
| <b>703003=3GR 3700W 220/380V</b>   |               |
| <b>703069=2GR 4500W 220/380V</b>   |               |
| <b>703004=3-4GR 5000W 220/380V</b> |               |
| <b>700731/22=1GR 2000W 220V</b>    | <b>4 POLE</b> |
| <b>700731/11=1GR 2000W 110V</b>    |               |
| <b>700732/22=2GR 2600W 220V</b>    |               |
| <b>700778=3GR 3700W 220V</b>       |               |
| <b>633092=3-4GR 6500W 220V</b>     |               |



ASTORIA

© 2021 Progressive Marketing, Inc.