

**X
2
00**

OWNER'S MANUAL



*TPM Mount Sold Separately

ATIBALTM
always on target

XP8

PRODUCT OVERVIEW:

The Atibal XP8 is one of the most versatile short to long range optics on the market. At 1x magnification the XP8 reticle serves as a red dot sight for rapid engagement at short to medium distances. At 8x magnification, with the Second Focal Plane reticle and bullet drop compensator, the shooter can rest assured that they can achieve precision accuracy at medium to long distances.

The Atibal XP8 features a removable rapid view lever for quick magnification adjustments from 1x to 8x. The rapid view lever ensures that the user will be able to acquire targets quickly with precision accuracy, no matter the distance.

At Atibal our goal is simple; to provide superior quality products at reasonable prices. We back our quality with a full lifetime warranty on all of our products. Couple this with our exemplary customer service and Atibal is a name you can count on.



Components

1. Fast Focus Eyepiece/ Reticle Focus.
2. Elevation Adjustment Dial.
3. Windage Adjustment Dial.
4. Reticle Illumination Brightness Dial.
5. Magnification Adjustment Ring.
6. Objective Lens, 24mm.

SPECIFICATIONS:

MAGNIFICATION:	1-8X
OBJECTIVE LENS DIAMETER:	24MM
EYE RELIEF:	4 INCHES
FIELD OF VIEW:	105-12.45 FT
BATTERY TYPE:	1x CR2032
TUBE SIZE:	30 MM
TURRET STYLE:	LOW PROFILE CAPPED
ADJUSTMENT PER CLICK:	1/2 MOA
MAX ELEVATION ADJUSTMENT:	120 MOA
MAX WINDAGE ADJUSTMENT:	120 MOA
WEIGHT:	17.4 OZ. W/O MOUNT
LENGTH:	10 INCHES
MADE OF 6061-T6 AIRCRAFT GRADE ALUMINUM	

**LIFETIME WARRANTY • SECOND FOCAL PLANE (SFP) •
EXTRA BATTERY COMPARTMENT IN WINDAGE CAP •
.5 MOA CENTER DOT WITH BDC CALIBRATED FOR 5.56
62GR AMMO • 11 BRIGHTNESS SETTINGS • FULLY
MULTI-COATED LENS PROVIDING NO LESS THAN 85%
LIGHT TRANSMISSION • LOW PROFILE TURRETS FOR
WINDAGE AND ELEVATION ADJUSTMENTS • DEFINED
WINDAGE / ELEVATION ADJUSTMENTS • WATER PROOF
SHOCK PROOF • FOG PROOF**



**PLEASE OBSERVE ALL FIREARMS SAFETY RULES
WHEN HANDLING A FIREARM.**

MOUNTING INSTRUCTIONS:

Atibal recommends using the Atibal TPM mount for optimal performance and reliability. Install the mount as per the manufacturer's instructions. Do not overtighten the scope mount, doing so can cause irreparable damage to your XP8 potentially voiding the warranty.

ESTABLISHING EYE RELIEF

The XP8 has a 4" eye relief. To establish eye relief, first affix your scope mount to the firearm in your desired position. Once the mount is secured adjust your optic to the 8x magnification position. Position yourself behind the optic in your preferred shooting position with an adequate cheek weld. With the optic set as far forward as possible in the mount and a good cheek weld established, slowly start to slide the scope rearward until a full sight picture is achieved, you do not want to see any black around the reticle.

ALIGNING THE RETICLE

The purpose of aligning the reticle is to ensure that the reticle is square to the firearm. To align the XP8 reticle use either the vertical line of the bullet drop compensator, or the lowest horizontal line of the bullet drop compensator as a reference for horizontal orientation.

To align the reticle; first make sure to not disturb the eye relief determined in the previous step. Next you'll want to place your firearm on a stable, level platform with enough space to adequately secure the firearm in a stable level position. With space permitting use either a plumb bob or a clearly visible line that is perfectly perpendicular to the earth, try to set the reference point at a significant distance from the optic. Once the vertical reference has been established, position yourself behind the rifle in your ideal shooting position with a solid cheek weld. While looking through the rifle scope with your shooting eye, slowly rotate the scope in the mount until the vertical line of the reticle is

perfectly parallel with the vertical reference line. Once you have established a perfect reticle alignment tighten down the scope mounts as per the manufacturer's specifications. Aside from the aforementioned method of reticle alignment, there are a variety of other tools and techniques that can be used to establish a perfect reticle alignment. A simple online search will yield a variety of results explaining how to set reticle alignment.

OPERATING INSTRUCTIONS:

BATTERY INSTALLATION

To install the battery twist off the cap of the illumination control dial. Install one (1) CR 2032 battery, positive(+) side facing outward of the optic.

Additional battery storage can be found inside the cap of the windage adjustment dial.

RETICLE ILLUMINATION / BRIGHTNESS DIAL

The Atibal XP8 features an illuminated reticle with 11 different brightness settings.

Brightness settings range from one (1) to eleven (11); one (1) being the dimmest, eleven (11) being the brightest.

Be sure to set the illumination dial to zero(0) to turn the illumination off while the optic is not in use, in order to avoid draining the battery.

RETICLE FOCUS ADJUSTMENT

The Atibal XP8 features a fast focus eyepiece for quick reticle focus adjustments. To adjust the focus, first ensure that the fast focus eyepiece is not set to one extreme end or the other. Rotate the fast focus eyepiece to in between completely closed and completely open.

Find a white or plain light colored background to view through the scope. Quickly look through the scope at the reticle and rotate the fast focus eyepiece one way or the other until the reticle becomes as crisp and clear as possible.

Try to refrain from staring at the reticle for too long while making focus adjustments, as this will result in your eye compensating for an out of focus reticle, potentially causing a false reticle focus.

It should not be necessary to adjust the reticle focus each time the scope is used, though you may need to make some focus corrections from time to time.

WINDAGE & ELEVATION ADJUSTMENTS

The Atibal XP8 features precision windage and elevation adjustment dials that require no tools to manipulate and have an audible click making adjustments quicker and more accurate.

The clicks on the XP8 windage and elevation dials are $\frac{1}{2}$ MOA scale, so each click will move the strike of the round $\frac{1}{2}$ MOA (0.521 inches) at 100 yards distance.

1 MOA SCALE REFERENCE (2 clicks on the XP8)

@100 yards 1 MOA = 1.05 inches

@200 yards 1 MOA = 2.1 inches

@300 yards 1 MOA = 3.15 inches

@400 yards 1 MOA = 4.2 inches

TO MAKE ADJUSTMENTS ON THE WINDAGE & ELEVATION DIALS

Remove the Adjustment Dial Caps. With your fingers, rotate the dials in the appropriate direction, using the arrows on the dial for reference.

When making adjustments rotate the dial in the direction you wish to move the strike of the round.

ZEROING THE ADJUSTMENT DIALS

After sighting in your optic you will want to zero the adjustment dials. With the dial covers removed, use a small standard screwdriver or your fingernail, to insert into the gap in the adjustment dial face. Being cautious to not damage the optic, rotate the dial face until the "0" lines up with the reference dot located at the base of the dial on the scope.

MAGNIFICATION ADJUSTMENT RING / RAPID VIEW LEVER

The magnification adjustment ring of the Atibal XP8 1-8x24 rifle scope has eight (8) different magnification settings from 1x magnification to 8x magnification.

To adjust the magnification level simply rotate the adjustment ring around the scope until the desired level of magnification has been reached.

The Rapid View Lever is a removable handle that can be threaded into the magnification adjustment ring. The rapid view lever assists in quick and concise adjustments in magnification allowing shooters to acquire and engage targets quickly and confidently at any distance.

SIGHTING IN THE OPTIC

Prior to sighting in the optic you will want to boresight the scope, doing so can help speed up the process and potentially save some ammo.

To boresight the scope you can do so by establishing a reference point that is visible through the rifle bore and the optic. To do this, first ensure that the weapon is unloaded. Next, clear the action of the bolt and/or bolt carrier. Position the firearm on a sturdy platform where you are able to see through the rifle bore and the scope. Ensure that your reference object is visible through both the rifle bore and the scope as well as centered in the rifle bore and the scope picture. Start to make windage and elevation adjustments until the reticle is perfectly centered on the reference point. Once the reticle is centered over the reference point you can replace the adjustment dial caps.

Another method of bore sighting the optic is to use a laser bore sighting tool, follow the manufacturer's instructions when using a laser bore sighting tool.

Once Bore sighting has been accomplished you are ready to go to the range and finish sighting in your optic.

Using a rifle sighting target: fire a shot or two at the target, if you are several inches off center, make an appropriate amount of adjustments to move the reticle to the center of the target. Carefully fire a three shot group. Use the center of that group as a reference point for the final adjustments to windage and elevation.

Example: Firing from 100 yards, the center of your three shot group is 3 inches low and 4 inches left. At this distance you should make a 6-MOA adjustment up, and a 8-MOA adjustment right. Your next shot should now be very close to the center of the target.

After you finish zeroing your rifle at the range you will want to zero the adjustment dials.

CLEANING

The Atibal XP8 requires very little maintenance to keep clean and operational.

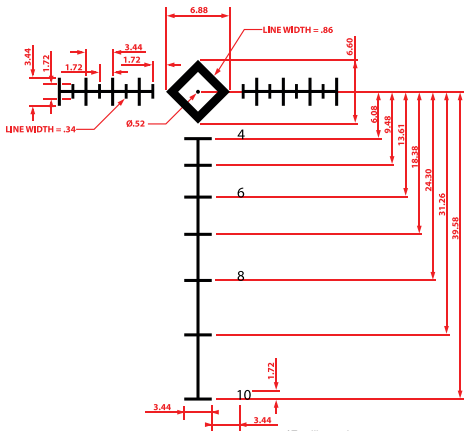
Treat the lenses with the utmost care, the lenses on the Atibal XP8 are fully multi-coated lenses. Use appropriate multi-coated lens cleaning rags, brushes, and solvents when cleaning. Never wipe a lens with a rag when debris is present as this can scratch the lens.

Always keep the adjustment dial covers on when not making windage and elevation adjustments. Do not attempt to disassemble the windage or elevation adjustment dials for any reason, as this can potentially void the warranty.

Keep the fast focus ring clean of any debris, do not attempt to disassemble the fast focus ring for any reason, as this can potentially void the warranty.

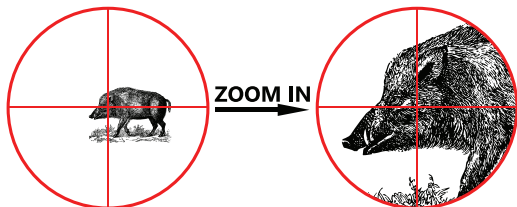
Wipe the scope body clean during normal routine weapons maintenance, use an aluminum safe cleaning solvent to remove build-up or grime.

THE XP8 UTILIZES THE DIAMOND TACTICAL RETICLE (DTR) WITH A .5 MOA CENTER RED DOT WITH A BDC CALIBRATED FOR 5.56 62GR AMMO. THE DTR RETICLE ALLOWS YOU TO QUICKLY OBTAIN YOUR TARGET WITH THE DIAMOND RETICLE IN CQB SCENARIOS AND FOR MORE PRECISE SHOTS AT LONGER DISTANCE WITH IT'S FINE .5 MOA CENTER RED DOT.



SECOND FOCAL PLANE RETICLE

If the reticle is placed at the second focal plane, as you increase the magnification, the target will get larger, but the size of the reticle will stay the same throughout the magnification.



TROUBLESHOOTING

If you are experiencing any of the following issues and none of the proposed solutions solve the problem, do not attempt to disassemble the scope and fix the problem yourself. Contact Atibal for help.

ILLUMINATION WON'T WORK.

- Ensure the brightness dial is on.
- Replace the battery

SCOPE WON'T SIGHT IN.

- Ensure you have a stable shooting platform and rest for your rifle.
- Ensure the scope is mounted properly as per the mount manufacturer's specifications.
- Try using a different ammo.
- Be sure that the firearm is clean and free of any buildup or debris.

DIALS AND RINGS WON'T FUNCTION PROPERLY.

- Ensure the dials and rings are free of any debris. Do not attempt to disassemble.

WARRANTY

No gimmicky names or slogans to make our Lifetime Warranty sound better than what it is. At Atibal we call our Lifetime Warranty a Lifetime Warranty. If your Atibal product becomes defective, broken, or is no longer working we will get it repaired or replaced. It's that simple. The Atibal XP8 has a full lifetime warranty. For full warranty information please visit <https://atibal-optics.com>



XP8

©2018 ATIBAL SIGHTS, LLC. ALL RIGHTS RESERVED. THE ATIBAL NAME AND ATIBAL TRADEMARKS ARE PROPERTY OF ATIBAL SIGHTS, LLC. REGISTERED IN THE U.S., ALL OTHER TRADEMARKS ARE THE PROPERTY OF THE RESPECTIVE OWNERS.

DESIGNED IN MESA, ARIZONA USA

ATIBALSIGHTS.COM

ATIBAL™
always on target