



# PA1 - PA2 - PA3



DIESEL

PA1 70



PA2 80-100



PA3 150

FEATURES	PA1 70	PA2 80	PA2 100	PA3 150
Voltage AC [V, Hz]	230, 50/60	230, 50	230, 50/60	230, 50
Current max [A]	2,9/3,5	4,1	4,5/5	14,5
Power [W]	550/650	750	805/900	3300
Motor protection	IP55	IP55	IP55	IP55
On/Off Switch	Yes	Yes	Yes	Yes
Cable [m]	2	2	2	2
Duty cycle [min]	S1 Continuous	S1 continuous	S1 continuous	S2 30
Nominal Flow Rate [l/min / GPM]	70 / 15,85	80 / 21,13	100 / 26,42	150/ 39,63
Max Pressure [bar / psi]	2	2.5	2.5	2.5
Dry Suction height [m]	2	2	2	2
Internal By-Pass	Yes	Yes	Yes	Yes
Inlet [BSP/G]	1"	1"	1"	1"
Outlet [BSP/G]	1"	1"	1"	1"
Pump body material	Cast Iron	Cast Iron	Cast Iron	Cast Iron
Impeller material	Sintered Steel	Sintered Steel	Sintered Steel	Sintered Steel
Vanes material	POM	POM	POM	POM
Ring material	HNBR	HNBR	HNBR	HNBR
Gasket material	NBR	NBR	NBR	NBR
Internal filter	Yes	Yes	Yes	Yes
Motor support	Yes	Yes	Yes	Yes
Min/Max Temperature [°C]	-20/+50	-20/+50	-20/+50	-20/+50
Max fluid viscosity [cSt] (a 40 °C):	2 ÷ 5	2 ÷ 5	2 ÷ 5	2 ÷ 5
Allowed fluids	diesel	diesel	diesel	diesel
Forbidden fluids	gas, alcohol, water, gasoline, kerosene			
Loudness at less 1 meter [dB]	< 70	85	85	< 90
Net weight [kg]	8	13	13	16
Gross weight [kg]	8,5	13,5	13,5	16,5



category

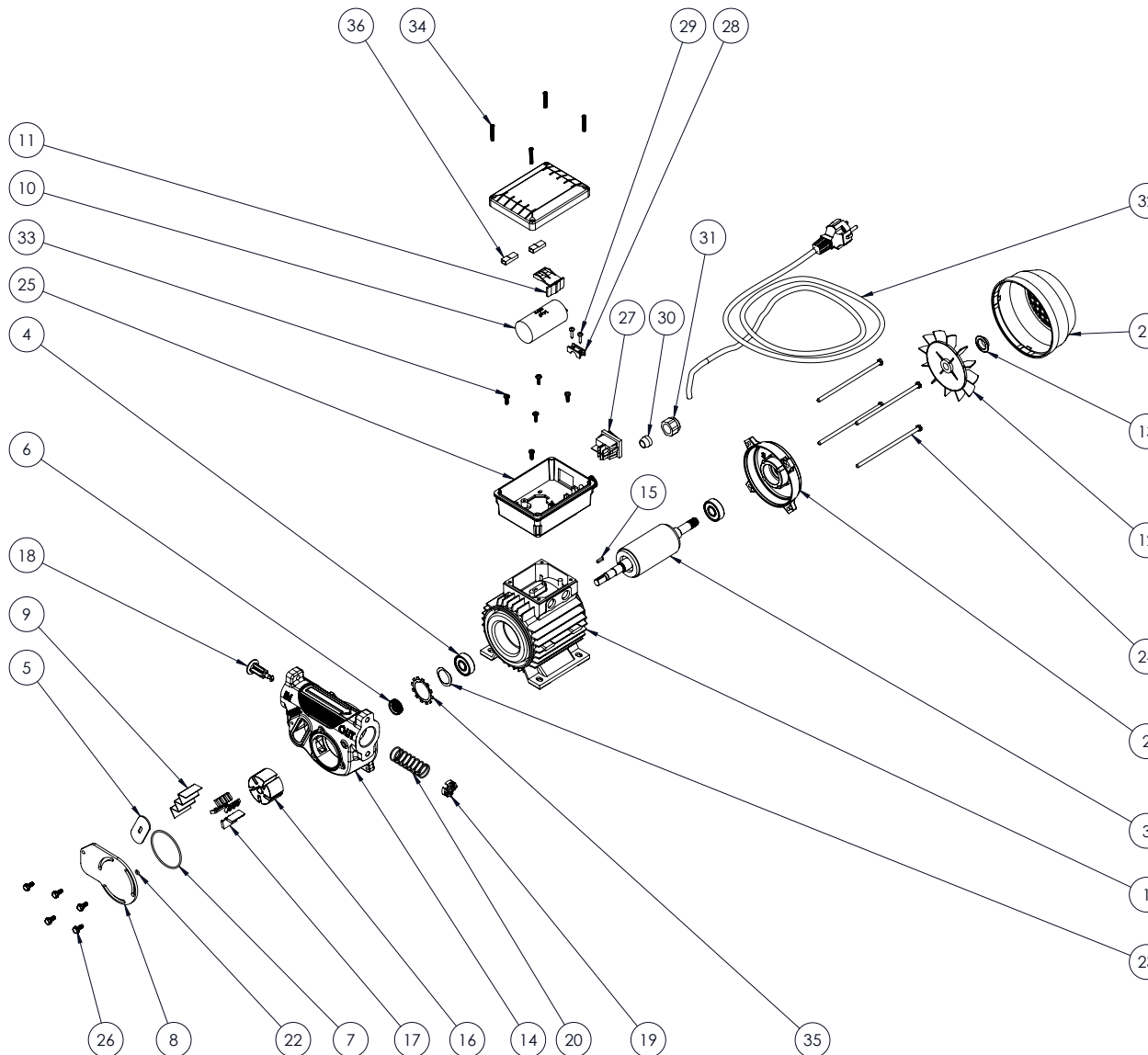
electric pump diesel

model

# PA1 70A 230V

MADE IN ITALY 

CODE	DESCRIPTION	QTY	
1	ME033	wound stator p80	1
2	ME032	machined shield p.80	1
3	ME034	motor shaft p.80	1
4	101001600000	bearing 6201 2rs	2
5	OR037	filter seal	1
6	OR038	motor shaft seal	1
7	OR039	o-ring nbr70 57x2 body pump	1
8	PA018	swivel locking plate	1
9	PA019	inox filter 16x49	1
10	PA020	capacitor 14µf	1
11	PA024	capacitor lock	1
12	PA025	fan fb63 d11 black wo/ring	1
13	PA026	ring d11 for fan fb63 black	1
14	CP009X	pump body pa 70l x-treme	1
15	PA021	pin 3x3x12 uni 6604-a	1
16	61000003	rotor ø45	1
17	71000522	small vane	5
18	71000520	by-pass valve	1
19	PA037	black reinforced bypass cap	1
20	16001005	by-pass spring	1
21	140250500000	mec 63 fan cover	1
22	11010040200	o-ring 2015 nbr	1
23	VT042	compensation ring	1
24	610046000000	tie rod m5 x 125	4
25	PA023	capacitor box	1
26	VT046	screw te m5x12 flanged	5
27	EL013	blue switch 22x30	1
28	140250300000	cable lock	1
29	VT004	screw tc ø3,5x16	2
30	17001011	cable gland rubber	1
31	17001012	cable gland ring nut	1
32	1902000000000	shuko cable 230v	1
33	VT048	screw tc 3,5x12	5
34	VT049	screw tc 4x25	4
35	VT050	security washer	1
36	190110000000 6.3	faston cover	2





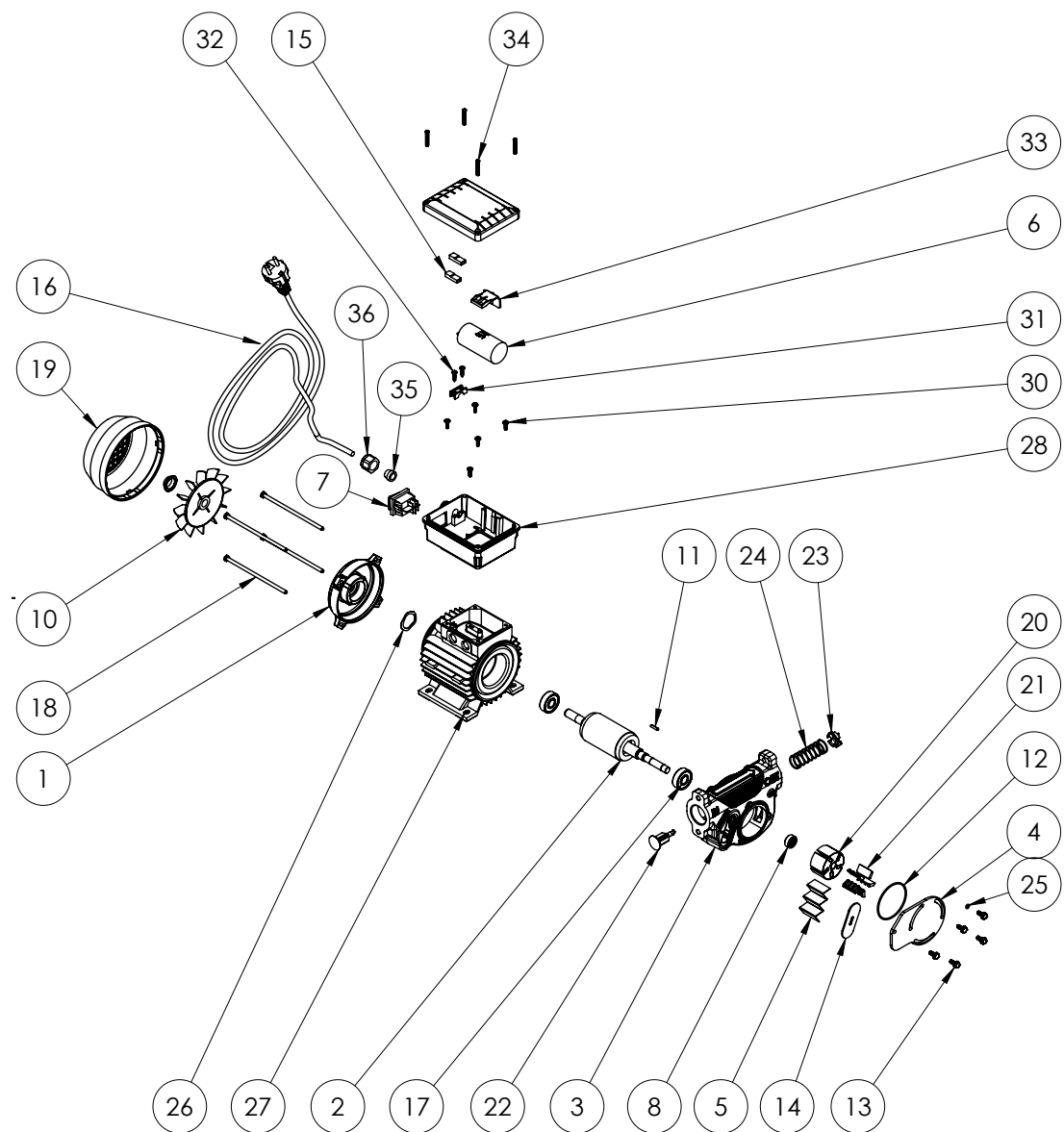
category

electric pump diesel

model

# PA1 70A 115V

	CODE	DESCRIPTION	Q.TY
1	15501600000X	MACHINED SHIELD MEC 63	1
2	6290150000L	ENGINE SHAFT MEC 63	1
3	CP009X	BODY PUMP PA 70L	1
4	PA018	SWIVEL LOCKING PLATE	1
5	PA019	INOX FILTER 16X49	1
6	PA020	CAPACITOR 14µF 450V	1
7	EL013	BLUE SWITCH 22X30	1
8	OR038	SHAFT SEAL Ø19	1
10	140250400000	FUN MEC 63	1
11	PA021	PIN 3x3x12 UNI 6604-A	1
12	OR039	O-RING NBR70 57x2	1
13	VT046	SCREW TE M5X12	5
14	OR037	FILTER SEAL	1
15	190110000000	COPRIFASTON 6.3	2
16	190200000000	SHUKO CABLE 230V	1
17	101001600000	BEARING 6201 2RS	2
18	61004600000	TIE ROD M5 x 125	4
19	140250500000	FUN COVER MEC 63	1
20	610000003	ROTOR Ø45	1
21	71000522	SMALL VANE	5
22	71000520	BY-PASS VALVE	1
23	PA037	BLACK BYPASS CAP	1
24	16001005	BY-PASS SPRING	1
25	11010040200	O-Ring 2015 NBR	1
26	VT042	COMPENSATION RING	1
27	232204000000	WOUND STATOR MEC 63	1
28	PA023	CAPACITOR BOX	1
32	VT004	SCREW TC Ø3,5x16	2
33	140250300000	CABLE LOCK	1
34	VT037	SCREW TC M4x6 UNI 8112	5
35	PA024	CAPACITOR LOCK	1
36	VT049	SCREW TC 4X25	4





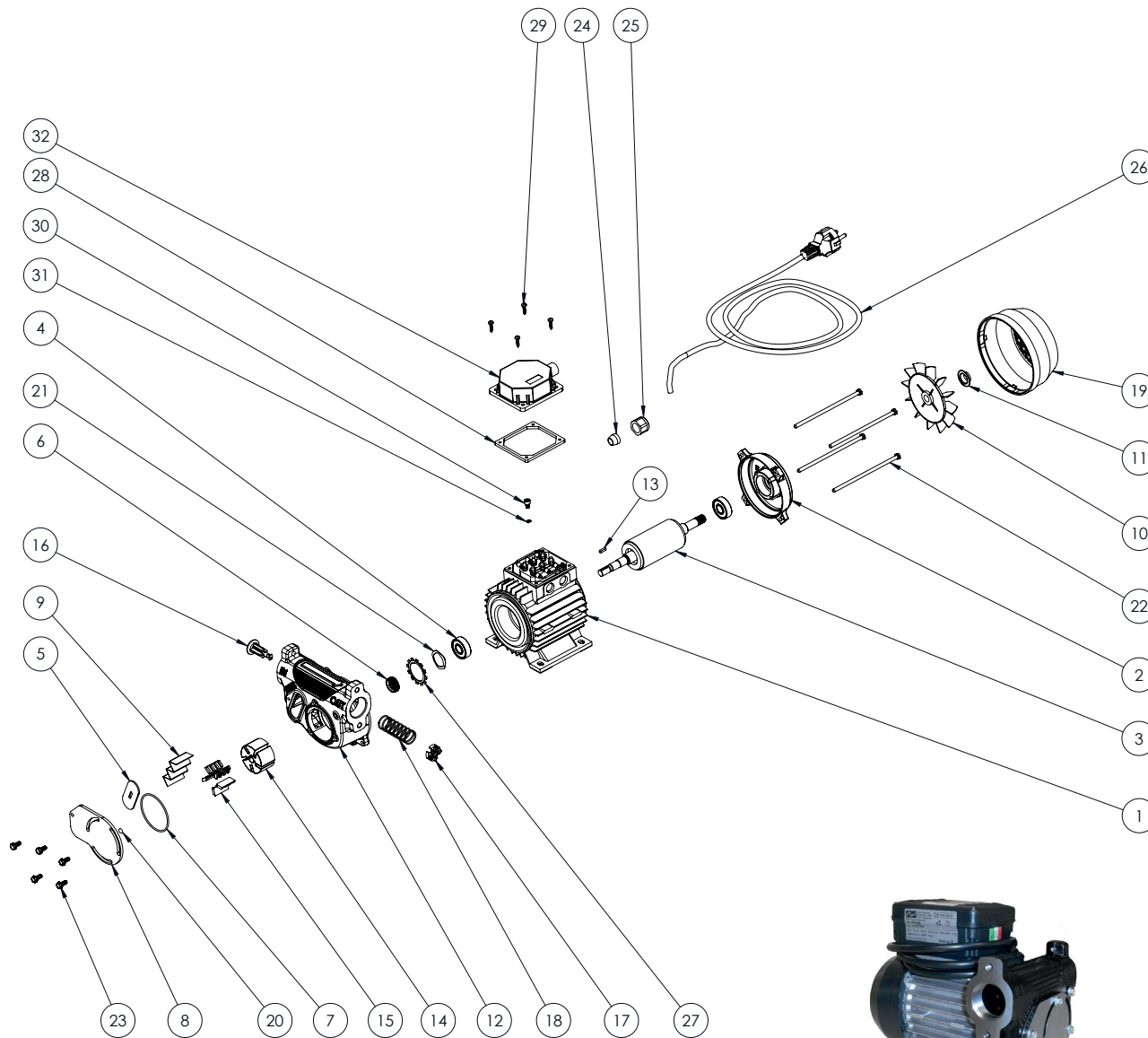
category

electric pump diesel

model

# PA1 70A 380V

	CODE.	DESCRIPTION	QTY
1	ME036	Stator wrapped MEC 63	1
2	ME032	worked shield MEC 63	1
3	ME037	Crankshaft MEC 63	1
4	101001600000	Radial ball bearing 6201 2RS	2
5	OR037	filter seal	1
6	OR038	inox Seal 10197 TCV 10X19X7	1
7	OR039	O-RING NBR70 57x2	1
8	PA018	swivel closing plate	1
9	PA019	inox filter 16x49	1
10	PA025	fan MEC 63	1
11	PA026	fan ring Ø12 MEC 63	1
12	CP009X	body pump	1
13	PA021	Tab 3x3x12 UNI 6604-B	1
14	61000003	rotor Ø45	1
15	71000522	vane	5
16	71000520	by pass valve	1
17	PA037	plate	1
18	16001005	by pass spring 60-80-100	1
19	140250500000	fan cover MEC 63	1
20	11010040200	O-Ring 2015 NBR	1
21	VT042	Compensation ring	1
22	61004600000	Tie M5 x 125	4
23	VT046	screw TE M5X12	5
24	17001011	Grommet cable press	1
25	17001012	Cable ring nut	1
26	190200000000	cabl + schuko plug 230V	1
27	VT050	security washer	1
28	PA032	seal FV 63 / 71 - 2	1
29	VT004	screw TC Cross Ø3,5x16	4
30	VT002	screw TCCE M5x8 DIN 7500 E	1
31	80301400000	washer Grower Ø4	1
32	PA031	board cover MEC63 380V	1
33	PA001	board 380V	1





category

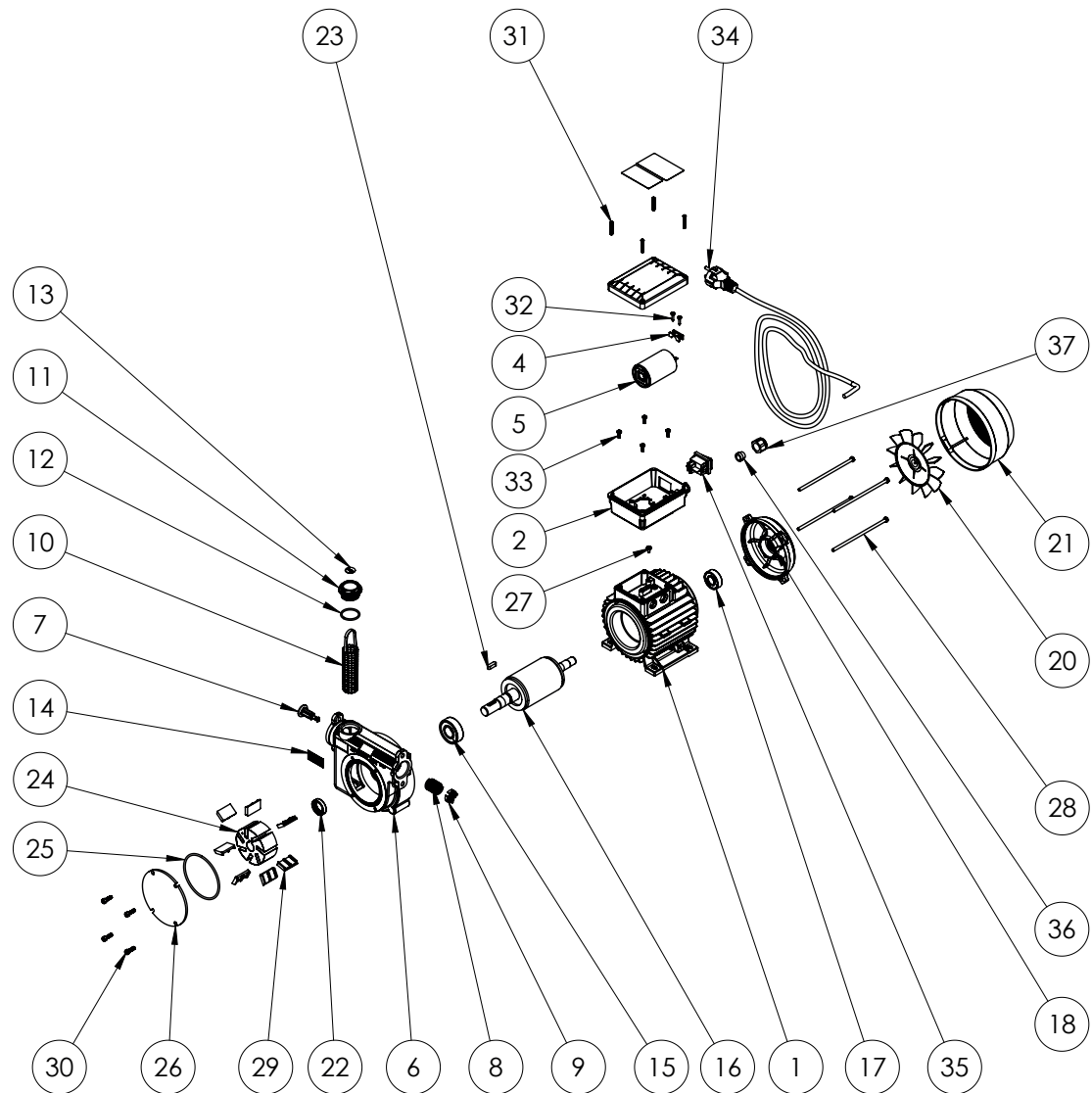
electric pump diesel

model

# PA2 80- 100 230V

CODE.	DESCRIPTION	Q.TY	
1	64100000000	Wrapped stator MEC 71 230V	1
2	PA023	capacitor holder + cap	1
4	140250300000	Cable lock	1
5	190061000000	Capacitor 25 µF	1
6	-	body pump	1
7	71000520	bypass valve	1
8	16001005	by pass spring	1
9	PA037	plate	1
10	41410000	inox filter	1
11	17001094	cap 1"	1
12	18001008	O-Ring 3118 NBR	1
13	71000587	label "FILTER"	1
14	71000546	label "clear filter"	1
15	101001880000	Radial ball bearing	1
16	62901700000	crankshaft MEC71	1
17	101001700000	Radial ball bearing	1
18	15502600000X	worked shield MEC 71	1
19	84505000000	Compensation ring Ø35	1
20	140260400000	fan MEC 71 with ring Ø14	1
21	140260500000	fan holder MEC 71	1
22	12001015020	Sealing ring 20x30x7 SNBR	1
23	90505050000	pin 6X6X20 UNI 6604-A	1
24	61000010	Rotor Ø72	1
25	18001022	O-Ring 85X3 NBR	1
26	71000063	pump holder 80-100 Lt.	1
27	82301410100	screw TC Cross M4 x 8	1
28	6100450000Z	Tie M5X135 ZnB	4
29	71000569	big vane	7
30	13001007	screw TCCE M5x16	4
31	VT049	screw TC 4X25 UNI 9707	4
32	VT004	screw TC cross Ø3,5x16	2
33	VT048	screw TC cross 3.5x12	4
34	190200000000	cable + schuko plug 230V	1
35	EL013	switch 22X30	1
36	17001011	grommet gland	1
37	17001012	Cable gland nut	1

CODE.	DESCRIPTION	
6	71000060	body pump 80 L 1"BSPG
6	71000079	body pump 100 L 1"BSPG





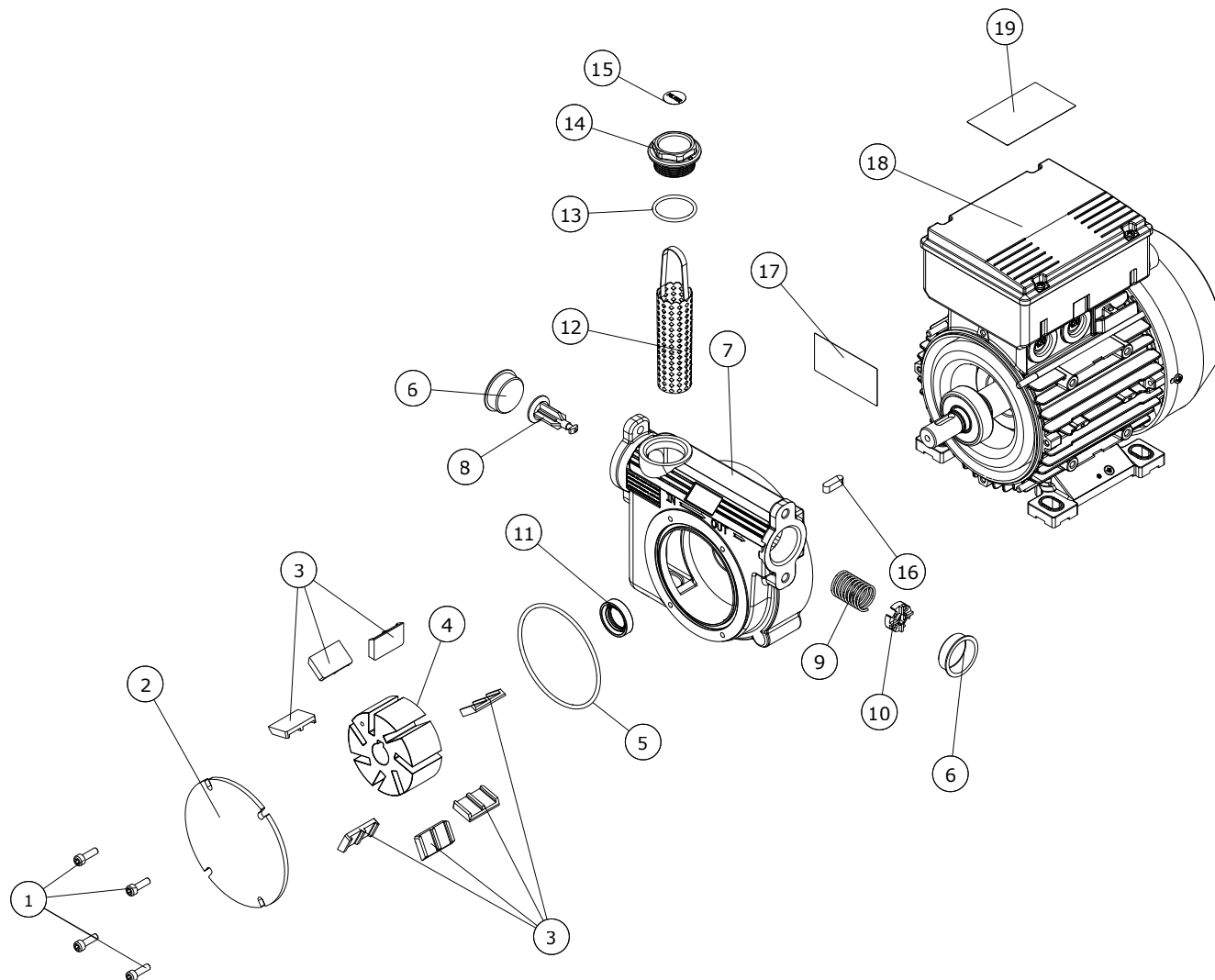
category

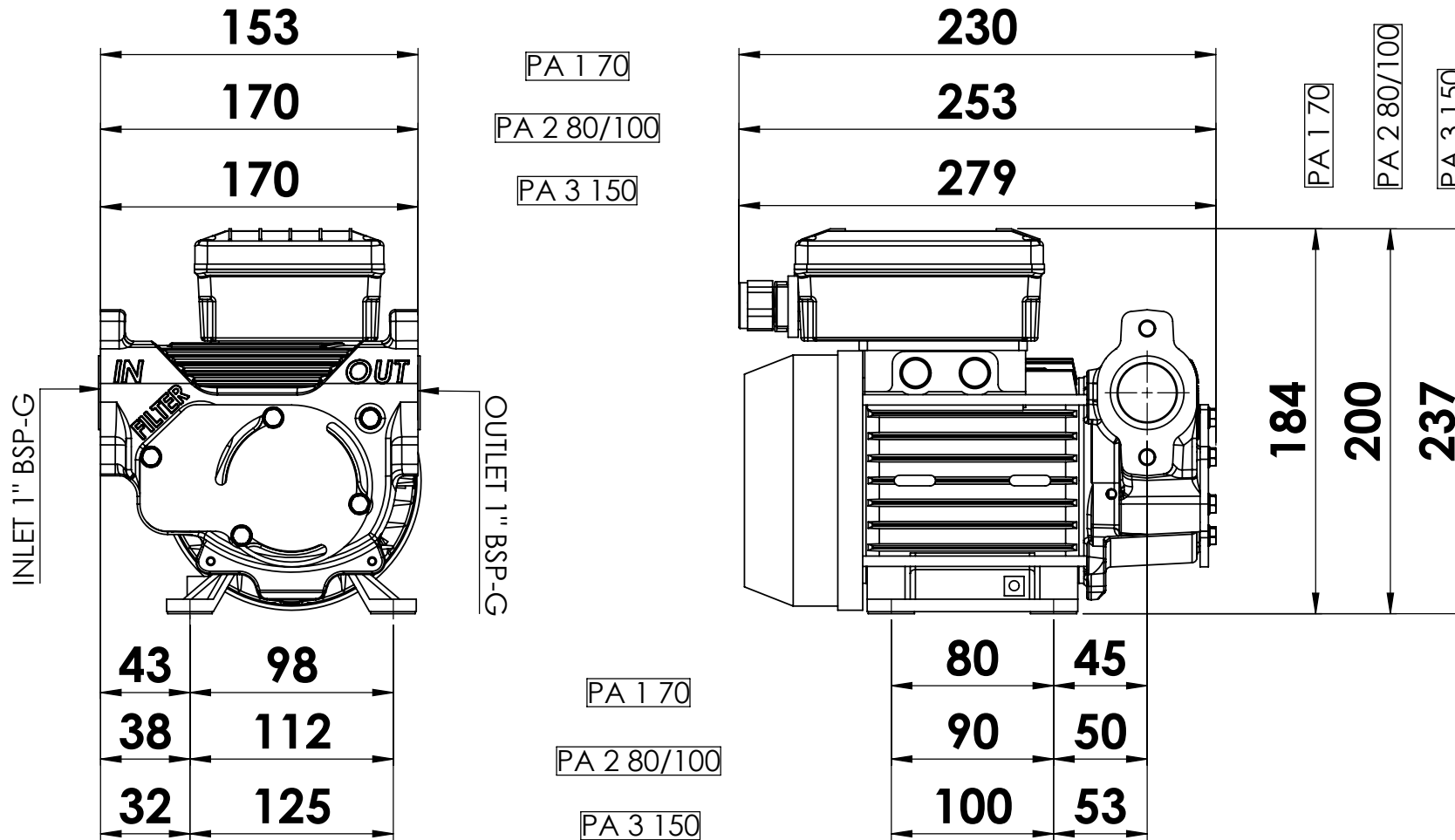
electric pump diesel

model

# PA3 150 230V

	CODE	DESCRIPTION	QTY
1	13001007	screw M5X16	4
2	71000063	pump cover	1
3	71000569	large vane	7
4	61000010	rotor ø72	1
5	18001022	O-Ring 85X3 NBR	1
6	163013500000	protection cap ø31	2
7	CP004	pump body 150l	1
8	71000520	bypass valve	1
9	16001005	bypass spring	1
10	PA037	plate	1
11	12001015020	sealing ring 20x30x7	1
12	41410000	filter	1
13	18001008	O-Ring 3118 NBR	1
14	17001094	cap 1"	1
15	71000587	"filter" label	1
16	90505050000	key 6x6x20	1
17	-	ce label	1
18	ME002	motor 150l	1
19	71000653	"danger" label	1





PA 170



PA 280-100

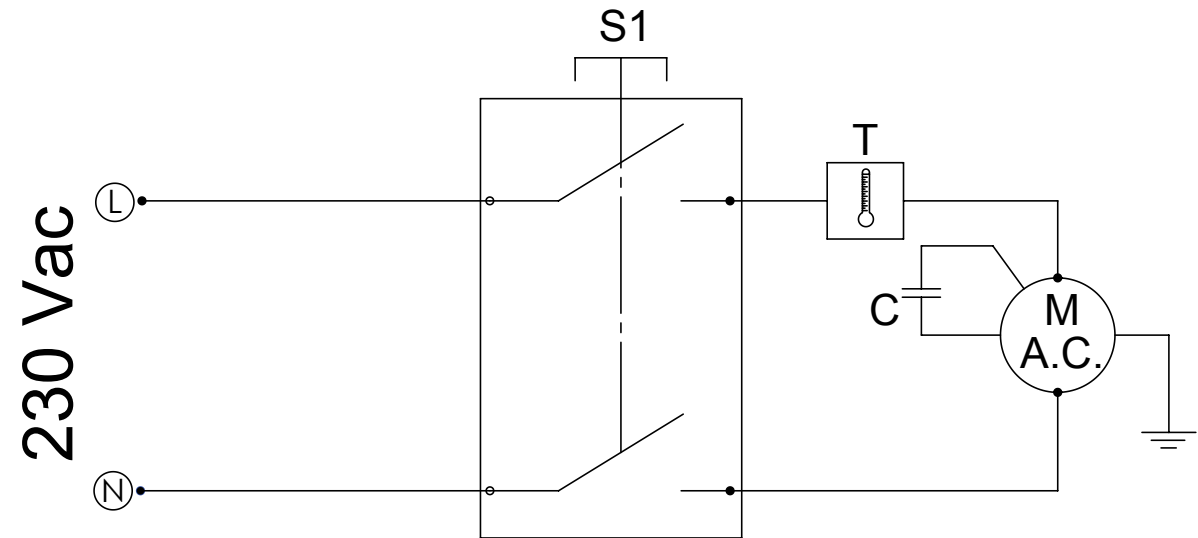


PA 3150

tutte le dimensioni espresse in mm - all dimensions are in mm



# PA1 70



schema elettrico

wiring diagram


schaltpläne


schémas électriques


esquemas eléctricos


esquemas elétricos


электрические схемы


 S:1 interruttore ON-OFF  
M: motore  
T: protezione termica  
C: condensatore


 S1: interruptor ON-OFF  
M: motor  
T: protección térmica  
C: condensador

 S1: ON-OFF switch  
M: Motor  
T: Circuit Breaker  
C: Capacitor

 S1: Interruptor ON-OFF  
M: Motor  
T: Proteção Térmica  
C: condensador

 S1: ON - OFF Schalter  
M: Motor  
T: Temperaturschutz  
C: Kondensator

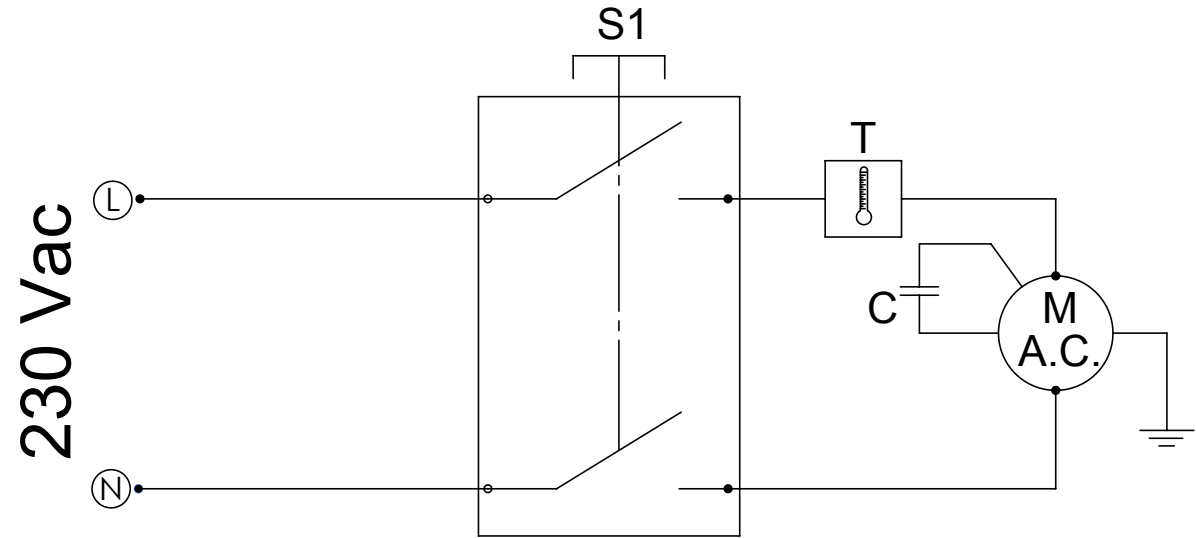
 S1: переключатель ВКЛ-ВЫКЛ  
M: Двигатель  
T: Термореле  
C: Конденсатор

 S1: interrupteur ON-OFF  
M: moteur  
T: protection Thermique  
C: condensateur





# PA2 80



schema elettrico

wiring diagram


schaltpläne


schémas électriques


esquemas eléctricos


esquemas elétricos


электрические схемы


 S:1 interruttore ON-OFF  
M: motore  
T: protezione termica  
C: condensatore


 S1: interruptor ON-OFF  
M: motor  
T: protección térmica  
C: condensador

 S1: ON-OFF switch  
M: Motor  
T: Circuit Breaker  
C: Capacitor

 S1: Interruptor ON-OFF  
M: Motor  
T: Proteção Térmica  
C: condensador

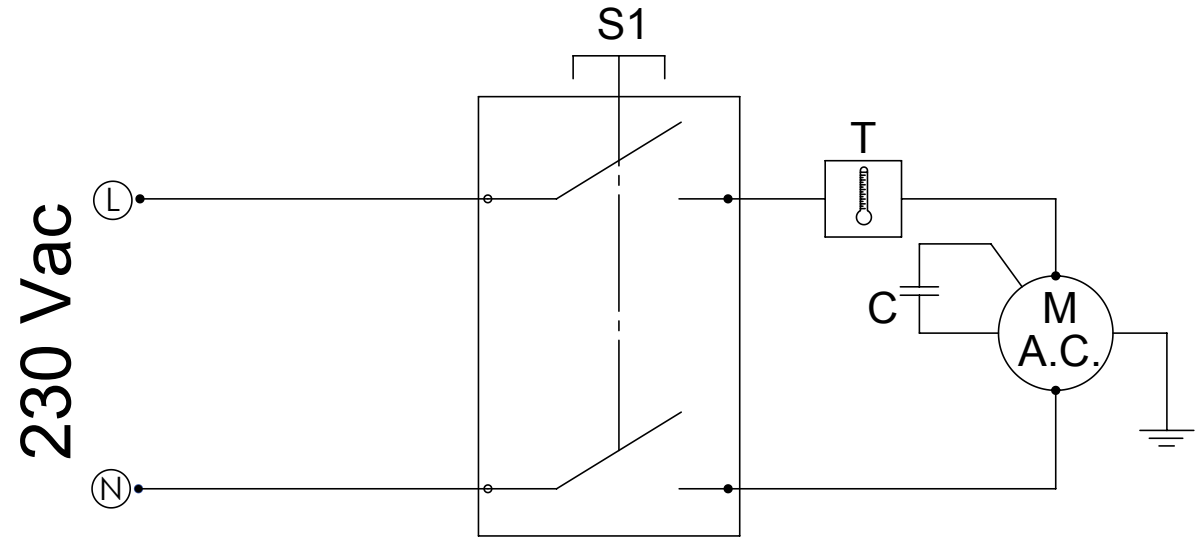
 S1: ON - OFF Schalter  
M: Motor  
T: Temperaturschutz  
C: Kondensator

 S1: переключатель ВКЛ-ВЫКЛ  
M: Двигатель  
T: Термореле  
C: Конденсатор

 S1: interrupteur ON-OFF  
M: moteur  
T: protection Thermique  
C: condensateur



# PA2 100



schema elettrico

wiring diagram


schaltpläne


schémas électriques


esquemas eléctricos


esquemas elétricos


электрические схемы


 S:1 interruttore ON-OFF  
M: motore  
T: protezione termica  
C: condensatore


 S1: interruptor ON-OFF  
M: motor  
T: protección térmica  
C: condensador

 S1: ON-OFF switch  
M: Motor  
T: Circuit Breaker  
C: Capacitor

 S1: Interruptor ON-OFF  
M: Motor  
T: Proteção Térmica  
C: condensador

 S1: ON - OFF Schalter  
M: Motor  
T: Temperaturschutz  
C: Kondensator

 S1: переключатель ВКЛ-ВЫКЛ  
M: Двигатель  
T: Термореле  
C: Конденсатор

 S1: interrupteur ON-OFF  
M: moteur  
T: protection Thermique  
C: condensateur



# PA3 150



schema elettrico

wiring diagram

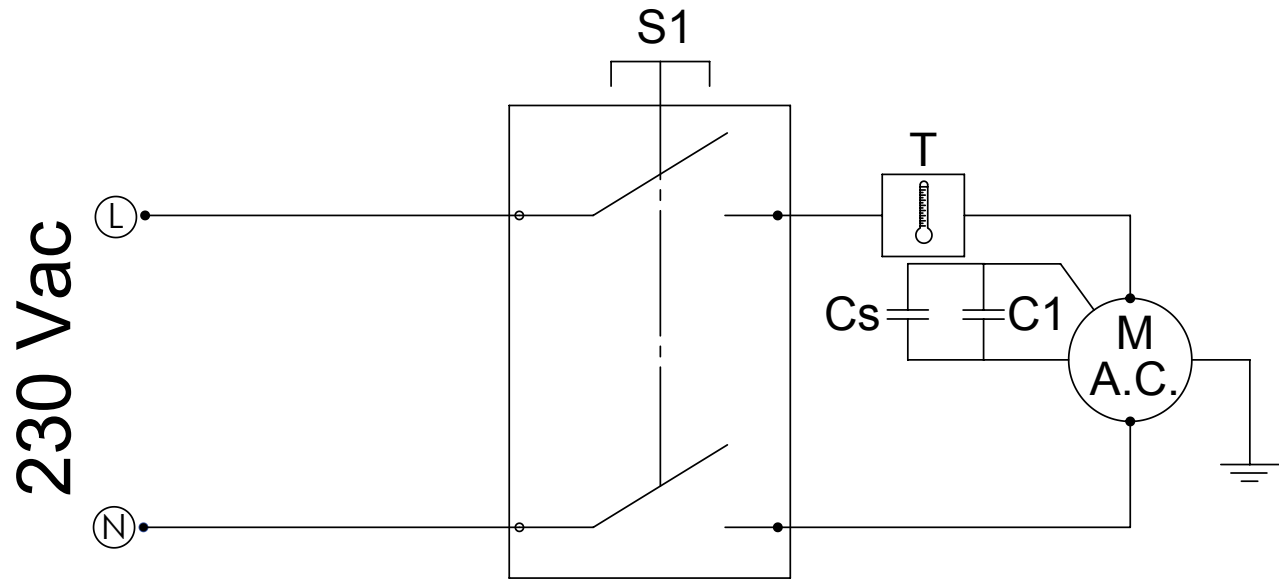
schaltpläne


schémas électriques

esquemas eléctricos


esquemas elétricos


электрические схемы





 S:1 interruttore ON-OFF  
M: motore  
T: protezione termica  
C1: Condensatore di fase  
Cs: Condensatore di start


 S1: ON-OFF switch  
M: Motor  
T: Circuit Breaker  
C1: Phase capacitor  
Cs: Start capacitor

 S1: ON - OFF Schalter  
M: Motor  
T: Temperaturschutz  
C1: Phasencondensator  
Cs: Startkondensator

 S1: interrupteur ON-OFF  
M: moteur  
T: protection Thermique  
C1: Condensateur de phase  
Cs: Condensateur de marche

 S1: interruptor ON-OFF  
M: motor  
T: protección térmica  
C1: Condensador de fase  
Cs: Condensador de start

 S1: Interruptor ON-OFF  
M: Motor  
T: Proteção Térmica  
C1: Condensador de fase  
Cs: Condensador de arranque

 S1: переключатель ВКЛ-ВЫКЛ  
M: Двигатель  
T: Термореле  
C1: Конденсатор фазы  
Cs: Конденсатор запуска



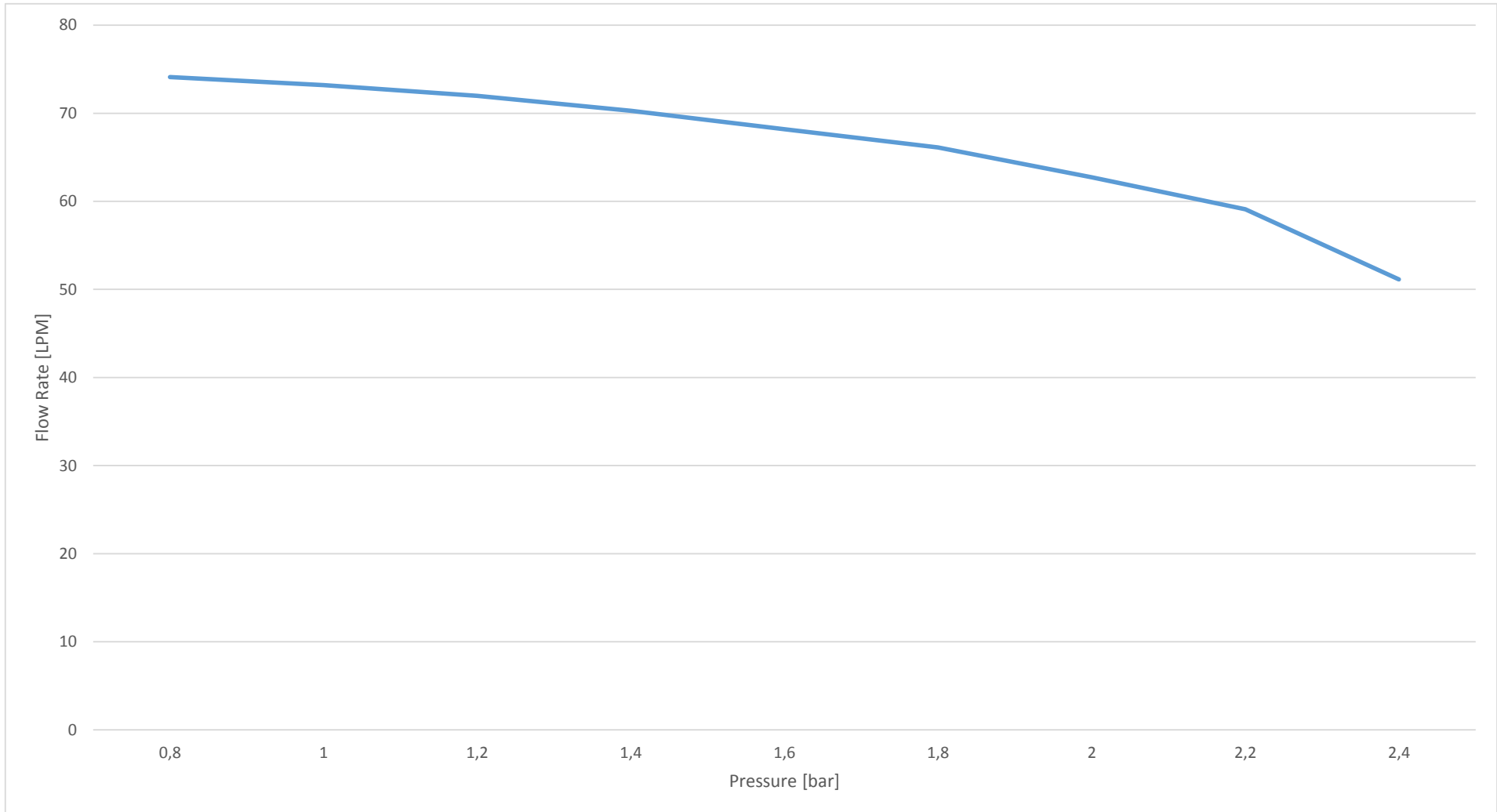
documento / document

prodotto / product

MADE IN ITALY 

curva di portata / flow rate curve

# PA1 70 230V 50Hz





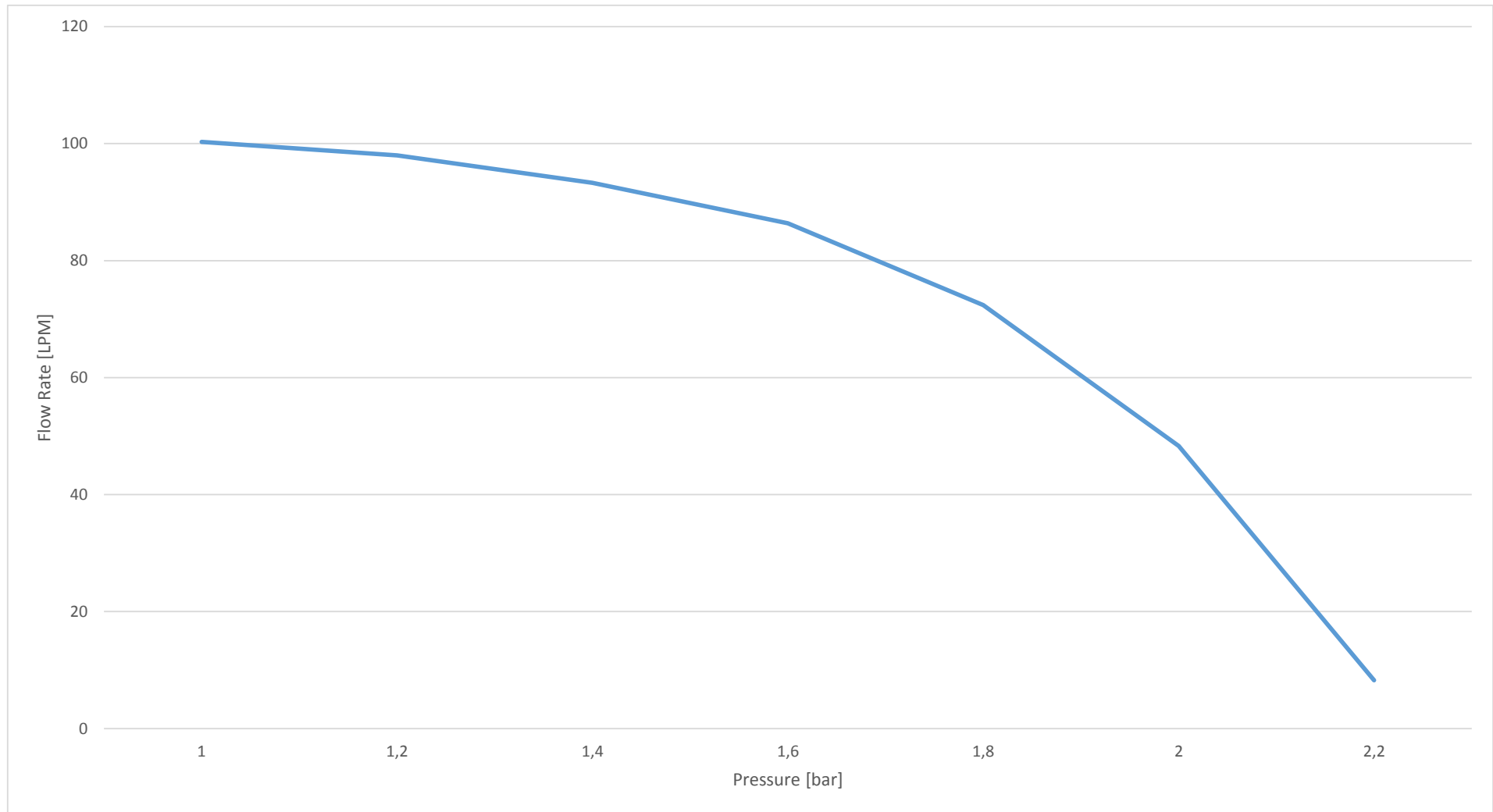
documento / document

prodotto / product

MADE IN ITALY 

curva di portata / flow rate curve

# PA2 100 230V 50Hz





documento / document

prodotto / product

MADE IN ITALY 

curva di portata / flow rate curve

# PA3 150 230V 50Hz

