



# AF 3000



DIESEL



## ACCESSORIES for all versions

- add-on Filter Kit
- Hose length

**NEW**

## Smart Stop Feature

Pump automatically switches off when nozzle is placed in its housing.

FEATURES	60 Litre	70 Litre	80 Litre	100 Litre
Power Supply AC [V, Hz]:	230, 50	230, 50	230, 50	230, 50
Max Current [A]:	2	2	3,9	4,6
Motor Protection:	IP55	IP55	IP55	IP55
On/Off Switch:	Yes	Yes	Yes	Yes
Smart Stop:	Yes	Yes	Yes	Yes
Cable [m]:	2	2	2	2
Duty Cycle [min]:	S2 30	S2 30	S2 30	S2 30
Nominal Flow Rate [l/min / GPM]:	60 / 15,85	70 / 18,49	80 / 21,13	100 / 26,42
Max Pressure [bar / psi]:	2 / 29	2 / 29	2,5 / 36	2,5 / 36
Dry Suction height [m]:	2	2	2	2
Internal By-Pass:	Yes	Yes	Yes	Yes
Internal Filter [µm]:	400	400	400	400
Inlet/Outlet [BSP/G]:	1" F / 1" F	1" F / 1" F	1" F / 1" F	1" F / 1" F
Pump body material:	Cast Iron	Cast Iron	Cast Iron	Cast Iron
Impeller material:	Sintered Steel	Sintered Steel	Sintered Steel	Sintered Steel
Vanes material:	POM - C	POM - C	POM - C	POM - C
Ring material:	HNBR	HNBR	HNBR	HNBR
Gasket material:	NBR	NBR	NBR	NBR
Flow meter digits:	4	4	4	4
Flow meter typology:	oscillating disc	oscillating disc	oscillating disc	oscillating disc
Flow meter precision [%]:	±1	±1	±1	±1
Repeatability [%]:	0,2	0,2	0,2	0,2
Flow meter material:	Alluminum, POM - C	Alluminum, POM - C	Alluminum, POM - C	Alluminum, POM - C
Other materials in contact with fluid:	Steel, PPS, Brass	Steel, PPS, Brass	Steel, PPS, Brass	Steel, PPS, Brass
Wall fixing:	Yes	Yes	Yes	Yes
Pedestal:	optional (2 measures) for all versions			
Color:	Blu/Grey	Blu/Grey	Blu/Grey	Blu/Grey
Chassis Material:	Painted Steel	Painted Steel	Painted Steel	Painted Steel
Delivery Hose [material, ø, m, fittings]:	Rubber, 20, 4, 1" x 1"	Rubber, 20, 4, 1" x 1"	Rubber, 25, 4, 1" x 1"	Rubber, 25, 4, 1" x 1"
Automatic nozzle [L / Gal]:	60 / 15,85	90 / 23,78	90 / 23,78	120 / 31,70
Min/max Temperature [°C]:	-20 / +50	-20 / +50	-20 / +50	-20 / +50
Max fluid viscosity [cSt] (a 40 °C):	2 ÷ 5	2 ÷ 5	2 ÷ 5	2 ÷ 5
Compatible fluids:	Diesel	Diesel	Diesel	Diesel
Not allowed fluids:	Gas, Alcool, Gasoline, Water for all versions			
Loudness at less 1 meter [dB]:	< 80	< 80	80	80
Net Weight [Kg]:	20,5	20,5	28	28
Gross Weight [Kg]:	22	22	29	29



category

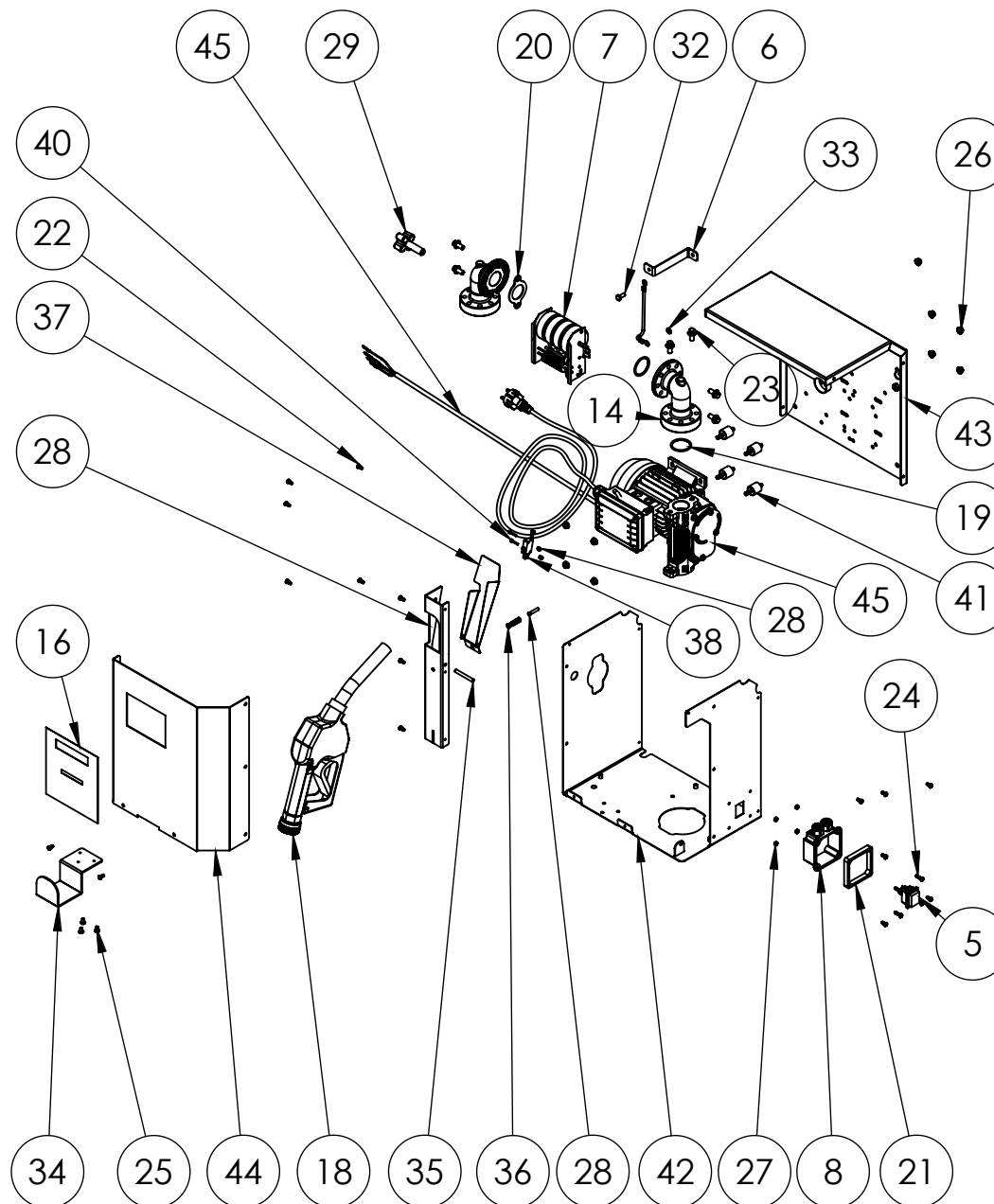
dispenser diesel

model

# AF 3000

MADE IN ITALY

	CODE	DESCRIPTION	Q.TY
6	AF022	meter support	1
7	-	mechanical meter	1
8	PA003	terminal cover FP71	1
9	PA004	plate with cable gland	1
10	71000550	Electrical box exit	1
11	17001011	cable gland rubber	1
12	17001012	cable gland ring nut	1
14	HT008L	telephone 1" BSP-G	2
15	VT002	screw TCCE M5x8	1
16	MA060	label	1
18	-	automatic nozzle	1
19	OR011	O-RING 37 x 3 NBR	2
20	OR017	Pipe rubber seal	1
21	OR022	terminal cover gasket	1
22	80901439100	screw TC M4x10	16
23	VT005	screw TE FR M8x16	6
24	VT014	Screw TC M4x16	4
25	81011810100	Screw TC M5x8	3
26	71000112	flanged nut M6	9
27	VT015	nut M4 UNI 5588	4
28	AF019	Nozzle holder A	1
29	71000532	meter pommel	1
30	163013500000	protection cap Ø31	2
32	80232320100	screw TE M6x14	1
33	83102310000	Washer 6x12x1.6	1
34	AF024	hose holde	1
35	VT031	plug d6 I50	1
36	SP005	gun padle spring	1
37	AF026	gun padle switch	1
38	190050150000	Microswitch	1
39	CA003 2X1	micro fms cable	1
40	VT034	screw TCCE M3x16	2
41	17001106	Cylindric damper 20x20	4
42	AF028	lower sheet	1
43	HT016	panel	1
44	AF027	frontal closing sheet	1
45	-	electric pumo	1





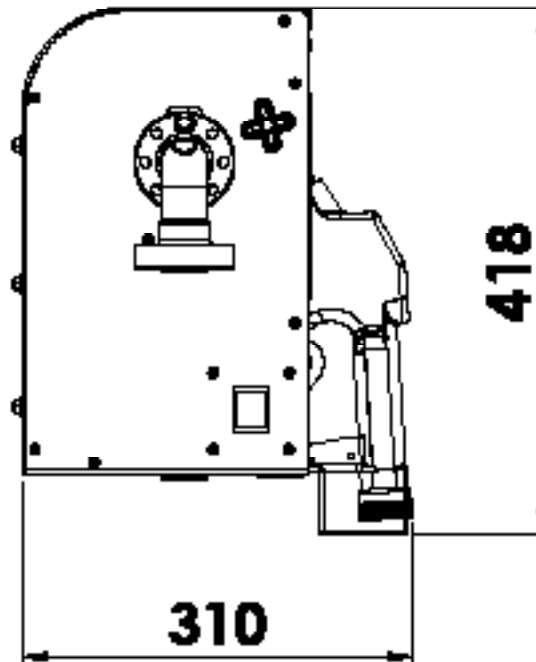
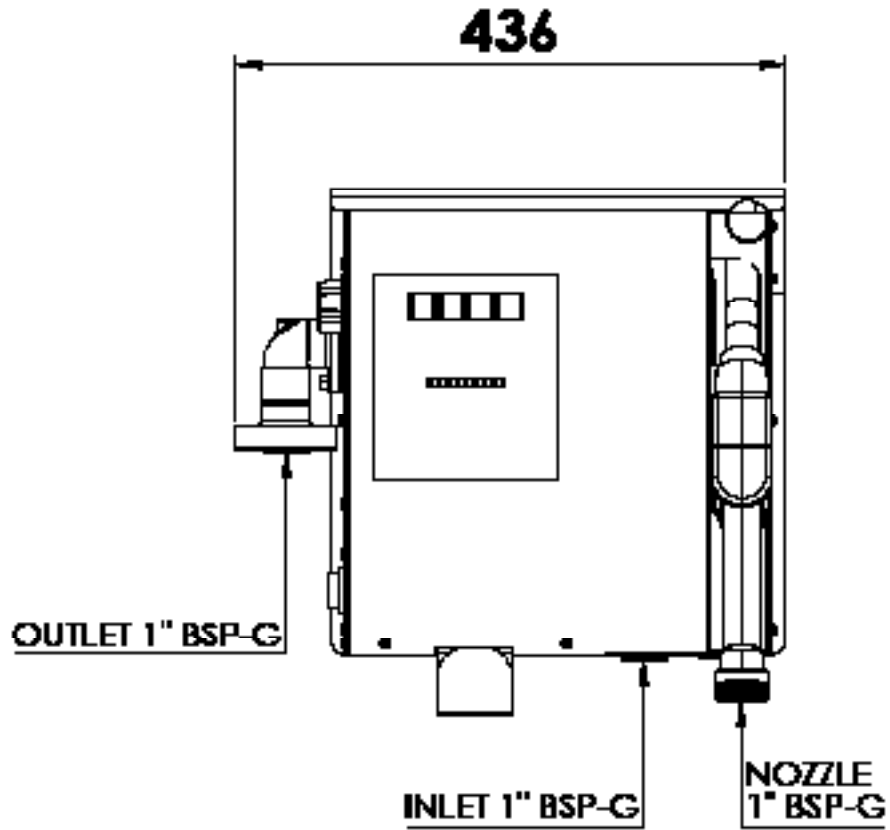
documento - document

prodotto - product

MADE IN ITALY 

ingombri - overall dimensions

# AF3000



tutte le dimensioni espresse in mm - all dimensions are in mm