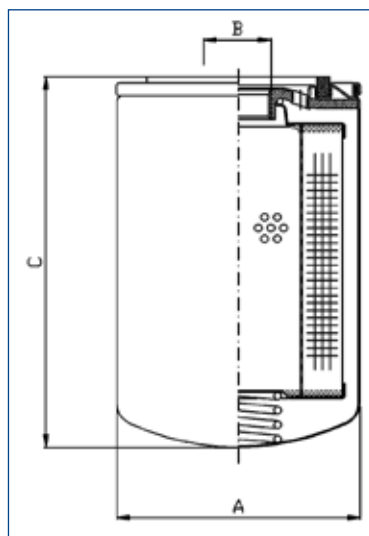


## TECHNICAL SHEET

# FILTER FT100A

Filter 100l/min 25µ with water removal



### FEATURES

Filter type	paper + water removal
Efficiency [µm]	25
Flow [l/min]	100
Max pressure [bar]	14
Temperature [°C]	-25/+120
Sealing	NBR
Fluid Compatibility	diesel, oil, vegetable oil, gasoline
Interchangeable with Filter CIM-TEK CT70068	yes

### HEAD FT002

- 100l/min 25µ
- in/out 1 1/4" BSP
- water removal



### MANOMETER FT003

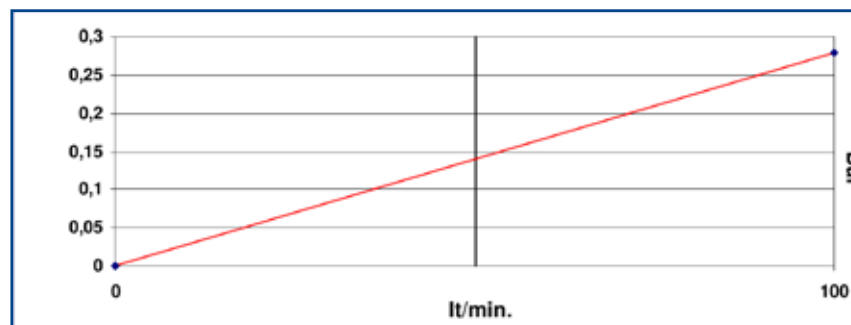
- saturation level indicator
- **BAR** (black line)
- **PSI** (red line)



### DIMENSIONS [mm]

A [mm]	128
B [mm]	1" - 1/2" UNF
C [mm]	263

### Flow chart to ISO 3968 (class B)



### KIT FILTER FT10TA

- head FT002
- cartridge FT100A
- manometer FT003 (optional)