

Sew Outside the Box

Sew a Bow Tie Instructions



Table of Contents

Learn it, Sew it, Love it.....	3
Good To Know Before you Sew.....	4
Pattern (Print This Page.....	5
Sewing Instructions.....	6
Glossary.....	9

Learn it, Sew it, Love it!

Welcome to Sew Outside The Box. This Bow Tie Sewing Tutorial is an example of the format of the machine sewing kits available for purchase at www.sewoutsidethebox.com. This PDF can be used in conjunction with the [video tutorial](#).

My goal is for you to learn something new in sewing and enjoy yourself in the process.

If you need additional help or have questions or comments, please feel free to contact Diana at SewOTB@gmail.com.

You can share your creations on instagram @SewOTB or on facebook <https://www.facebook.com/pg/sewoutsidethebox/>

Thank you for supporting my small business. Please feel free to make any items from this PDF tutorial to sell. If you do, I'd love you to include a credit to sewoutsidethebox.com. It's a wonderful gesture but not a requirement.

You may sell your completed projects - please do not sell or give away the pattern pieces or these instructions.

Good to Know Before You Sew

- ◇ Please Read the entire PDF instructions before beginning the project! As you read, visualize the sewing steps as best you can so that you may re-create them more easily. Get in the habit of doing this each time you begin a project and your sewing skills will improve dramatically. Also, you will begin to feel more confident when you realize you know more than you think you do.
- ◇ Save a tree! This PDF tutorial is not meant to be printed in its entirety - it is meant to be viewed on a laptop or tablet with Adobe Reader or Adobe Acrobat. Please save the PDF to your computer so that it will be available when you need it.
- ◇ Be sure to sew along with the video tutorial for more detailed instructions.
- ◇ You may wash and press your fabric before you begin to sew.
- ◇ All seams should be sewn with a 1/4" seam allowance unless otherwise indicated.
- ◇ Do not skimp on pressing. Lots of pressing makes sewing easier and gives a very professional finish.
- ◇ Print the pattern pieces and measure your 1" square to ensure that they are at the correct size.

Sew Outside the Box

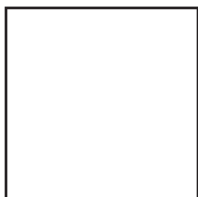
Bow Tie Pattern

Sew Outside the Box

Bow Tie Pattern

Neck Band
Cut 1 on the Fold

1" Test Square



Cut on Fold



Sew Outside the Box

Bow Tie Pattern

Knot
Cut 1

Sew Outside the Box

Bow Tie Pattern

Tie
Cut 2

Bow Tie Instructions

1. Print pattern and cut out the three pieces of the pattern. You need a 6" x WOF (width of fabric) piece or you can use a fat quarter.



2. Put the two tie pieces RST. Sew around four sides, leaving a gap in the middle of one long side. Backstitch at the beginning and end of the opening so that it will stay secure when you turn the tie right side out.

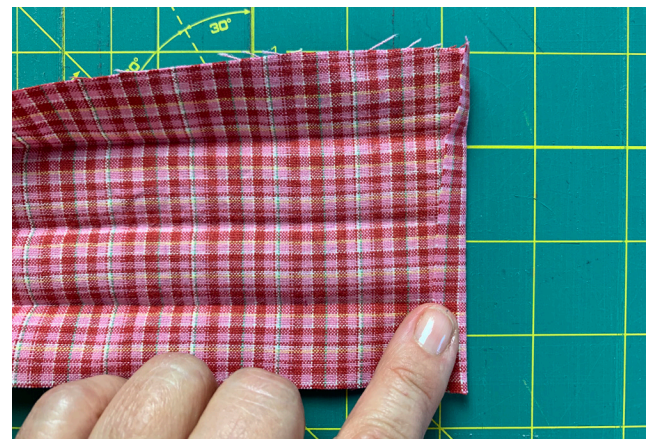
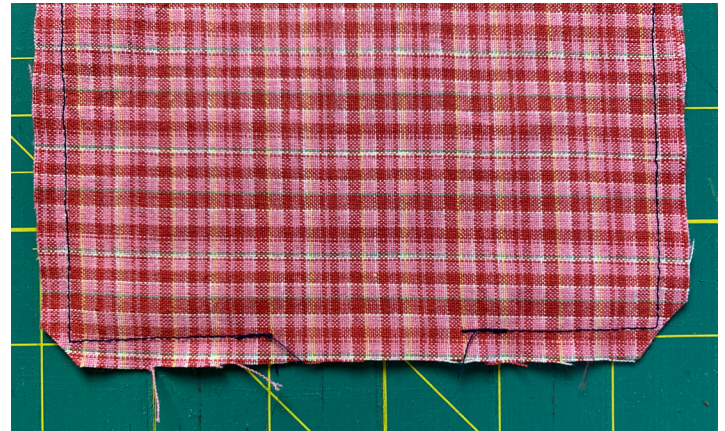
Trim the four corners on the diagonal. Cut close to but not through the thread. This will help to make the corners sharp.

3. Turn the tie right side out. Use a chopstick to gently push the corners out.

Tuck the opening in on itself and edgestitch around all four corners. The edgestitch will secure and close the opening.

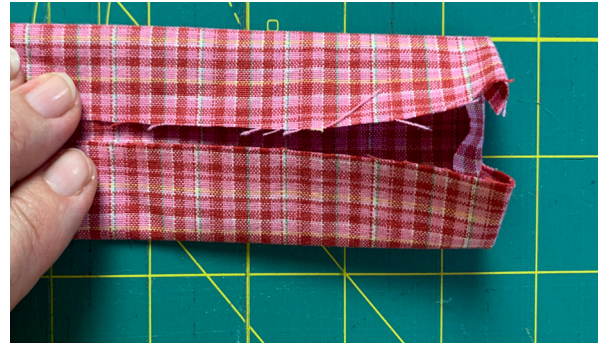
Set the tie aside until a later step.

4. Next take the neck band pattern piece and fold each short end in 1/4" and press. Then fold the neck band in half lengthwise. Press it and then open the fabric up. The crease line is the center. Fold each long edge in toward the crease line. *I've done the pressing and opened it up so you can see the nature of the folds.



Bow Tie Instructions

5. Here is the neck band with the raw edges turned toward the center.



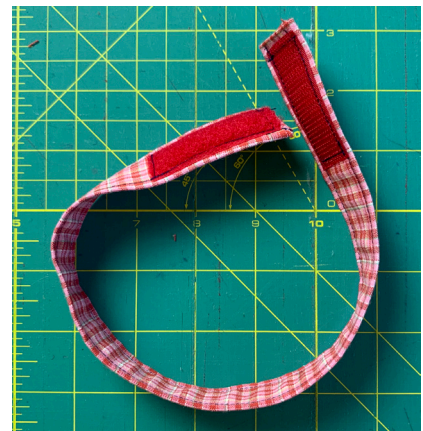
6. Fold in half again so that the raw edges are enclosed.



7. Edgestitch down each long side of the neckband.



8. Sew the velcro pieces on to each end of the neckband. The velcro overlaps so test it out to make sure your velcro is sewn on the proper side for overlapping.



Bow Tie Instructions

9. Repeat the neck band instructions with the knot pattern piece. Fold the knot piece lengthwise.



10. Make a circle of the knot piece and hand sew in place. The knot has a 1/4 to 1/2" overlap.



11. Feed the neckband through the knot section, fold the tie in fan fashion and put it through the knot piece as well.



12. Fan the sides of the tie piece out and dress your stuffed animal. Super cute!!



Backstitch - Forward/reverse 2 or 3 stitches at start and end of sewing

Blanket stitch - see Satin stitch

Grainline - refers to the warp and weft of the threads in woven fabric. Place the pattern on the fabric with the grainline parallel to the selvedge

Pressing Cloth - a layer placed between the fabric and the iron to prevent scorching

RST - Right sides together

Satin stitch - also known as the blanket stitch, whip stitch, or applique stitch. It looks like the teeth of a comb and gives a nice finished edge to applique

Seam Allowance - the distance from the sewing needle to the edge of the fabric

Selvedge - the self-finished edges of fabric

Straight stitch - a basic machine stitch used to form a line

Stitch in the ditch - stitch on top of a pre-formed seam. It is a stitch commonly used in quilting and clothing construction.

Top stitch - a straight stitch made 1/4" from the edge of the fabric

WST - Wrong sides together

Zig Zag stitch - a back and forth stitch that joins two pieces of fabric together at the edges. It is a special function found on your machine. Adjust the stitch length to make the zig zags closer or further apart