

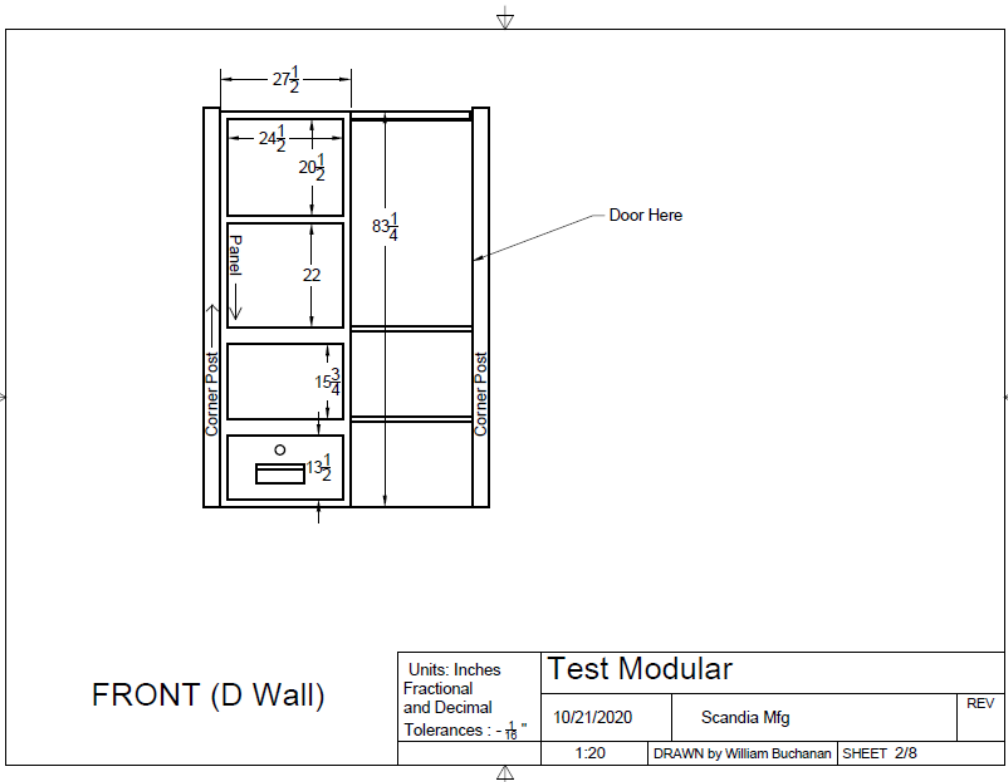
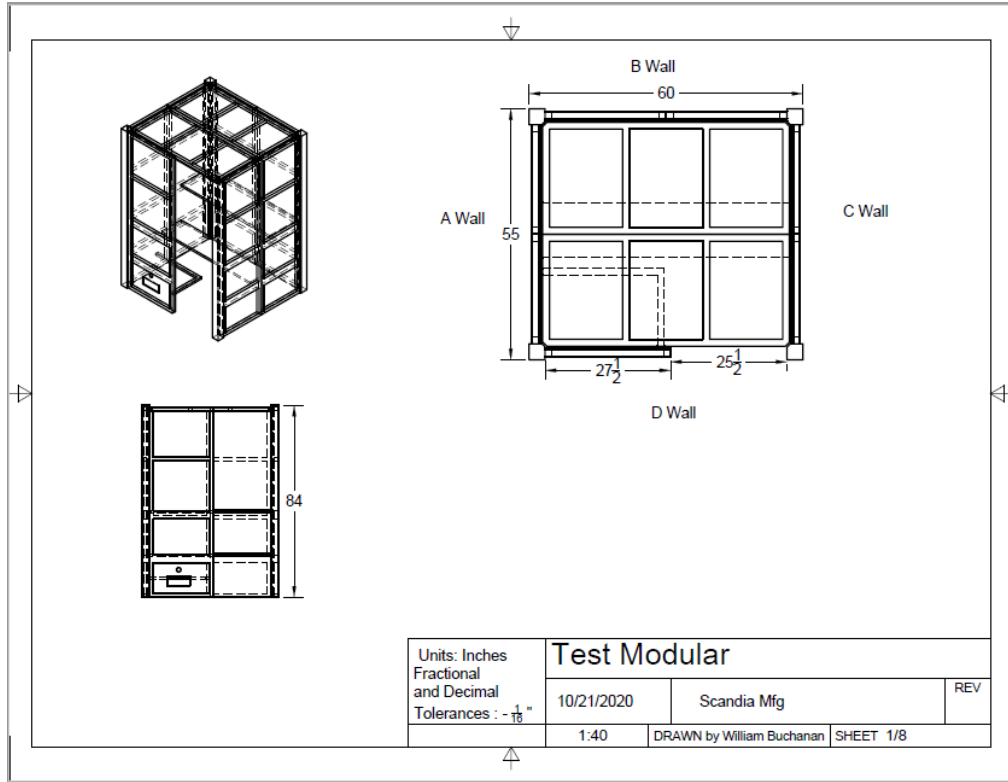
# Scandia Modular Sauna Installation Guide

Hello,

Congratulations on purchasing the finest modular sauna available on the market. This design focuses on quality materials and ease of assembly. This guide will help you assemble your modular sauna.

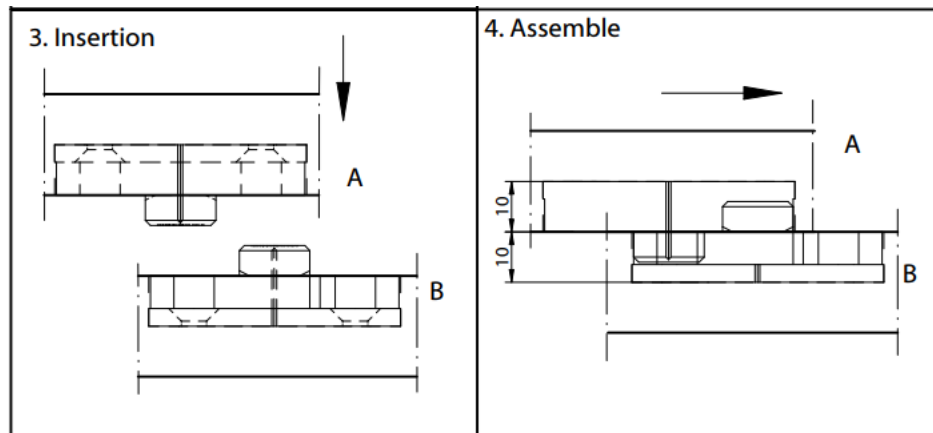
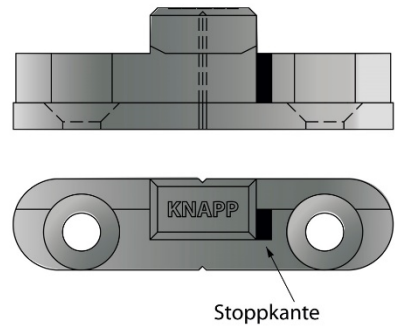
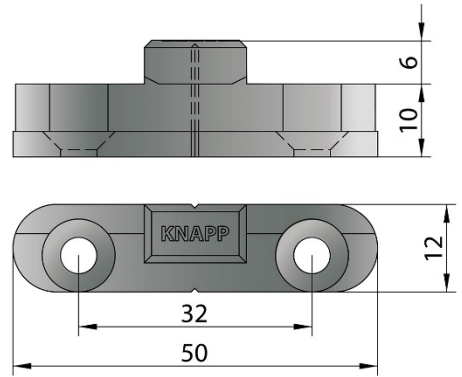
# 1. Collect your Documentation

It is important to make sure you have the layout that matches your modular sauna. See an example below. This layout will specify what goes where and how each piece connects together.

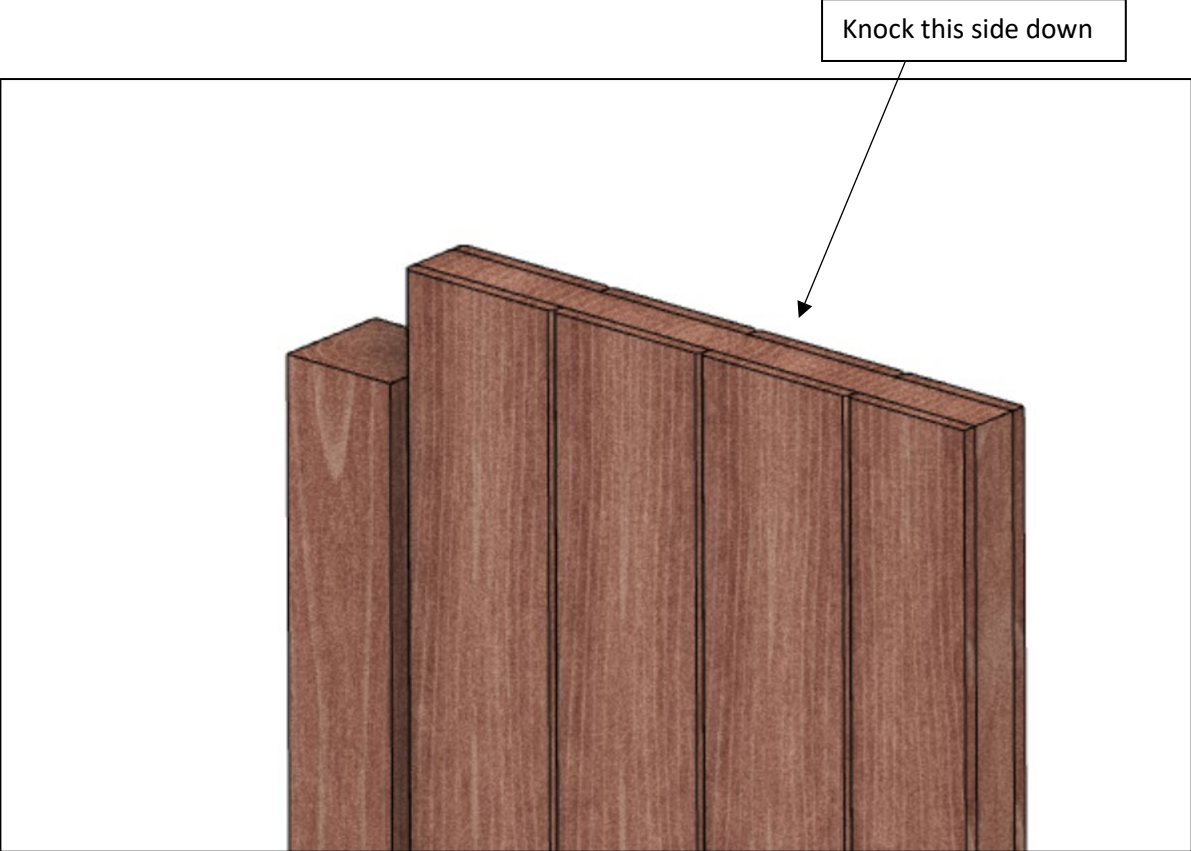


## 2. Assemble your walls and corner posts

That connector used in this modular sauna is called a Knapp connector. See images below.



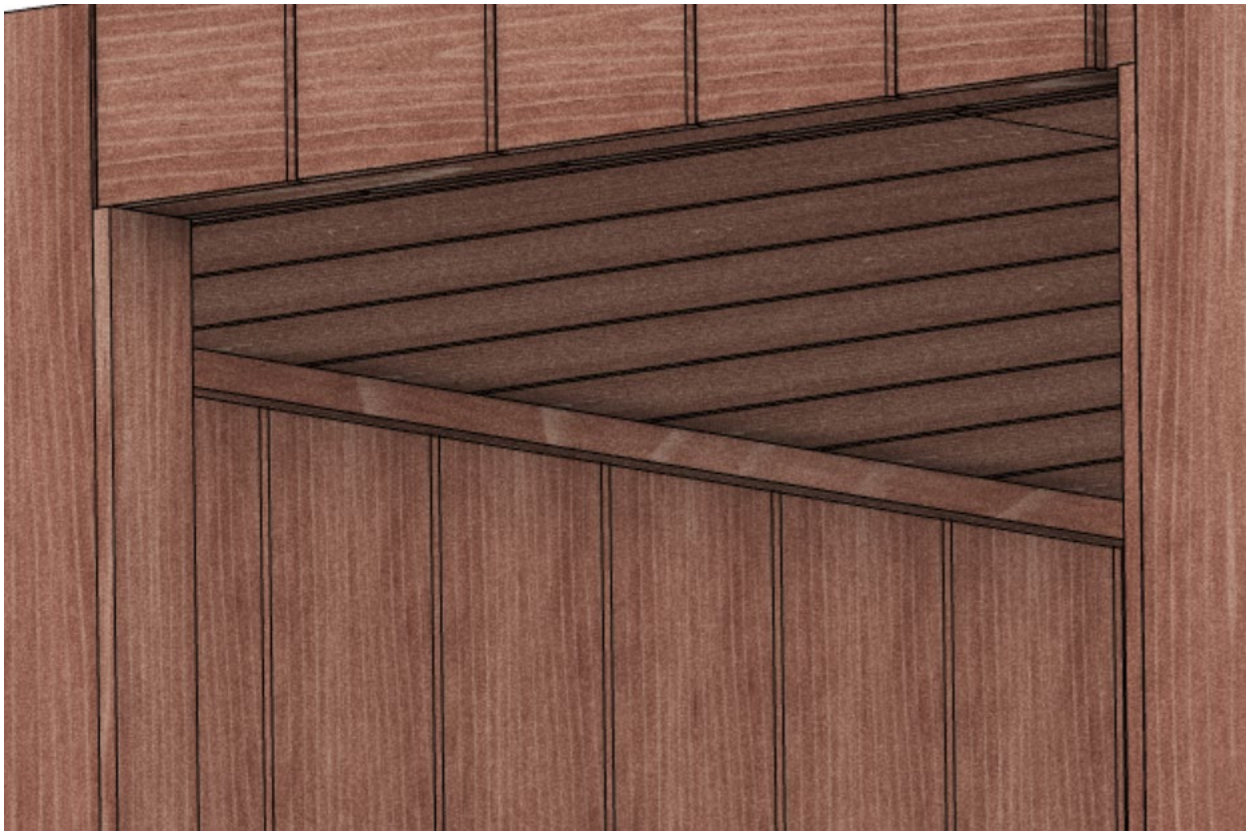
Each Panel and Corner post will have a knapp connector pre-mounted. Each panel will be labelled to match the layout documentation. Start with the corner posts and work your way around the room. The orientation of each piece will be marked on the layout document, otherwise you can visually inspect the connectors to determine the orientation. Get the knapp connectors lined up, and then use a mallet to assemble the two workpieces together.



### 3. Ceiling

After you have the walls and corner posts together, apply the ceiling trim next. The ceiling trim is 2" x 2" material, and will be screwed into the wall at the top. The ceiling itself will sit on top of this.

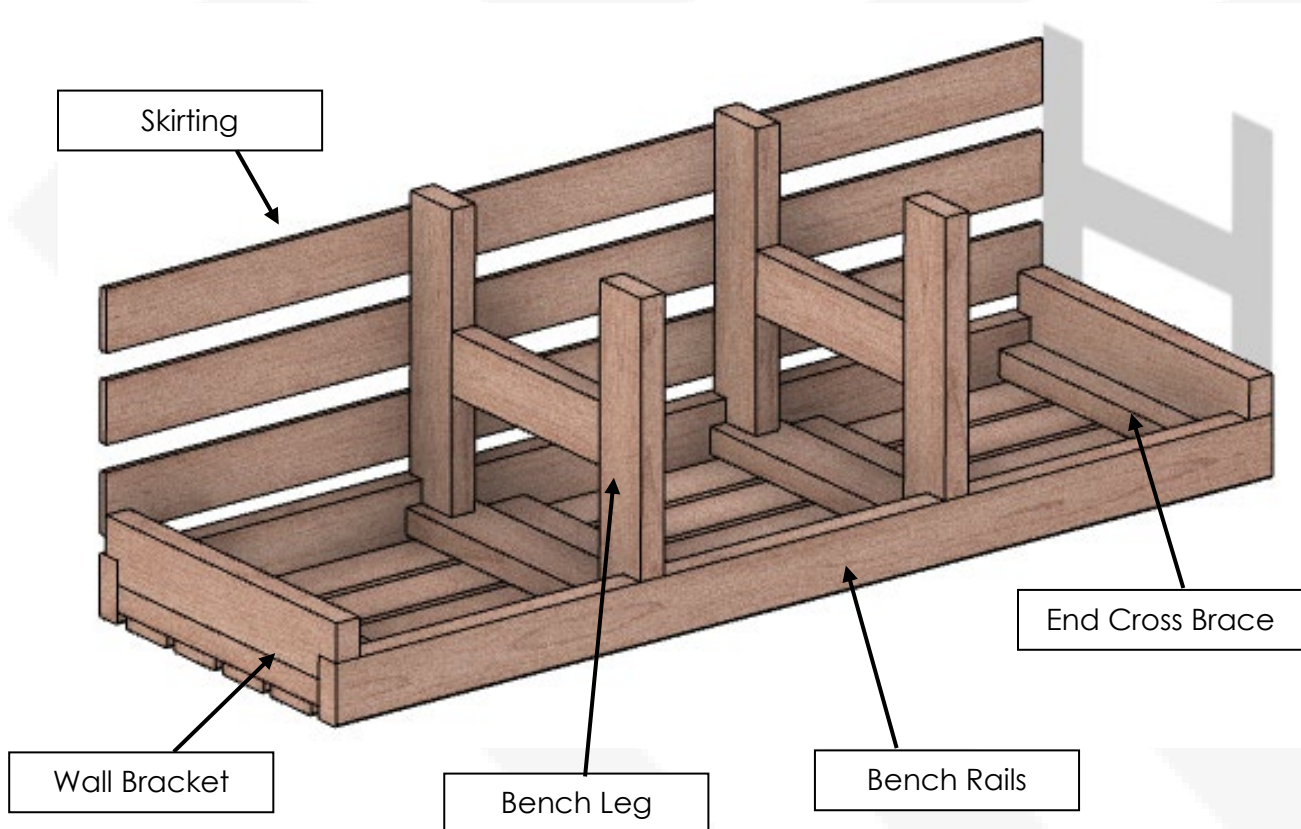
You will then assemble the ceiling panels, and place them on top of the ceiling trim. Screws can be run from the bottom of the trim up into the ceiling to further secure it.



- BENCHES:

- Bench tops are removable to allow for cleaning underneath.

- 1. Start with flipping the bench over, and attaching the legs, skirting, and wall mounts as necessary. The legs will attach where the cross-braces are. If the bench bumps up to a wall, use the wall brackets instead of the legs.



-2. Flip the assembled bench back over and slide into position. Set the bench level, then screw the wall brackets into the wall. As well screws can be ran through the bench rails into the wall for extra stability.



## Trim

-Brad nail the trim into place. The base trim will not go behind benches. The outside ceiling trim is only on the outside. The split will trim goes across the middle of the wall panels

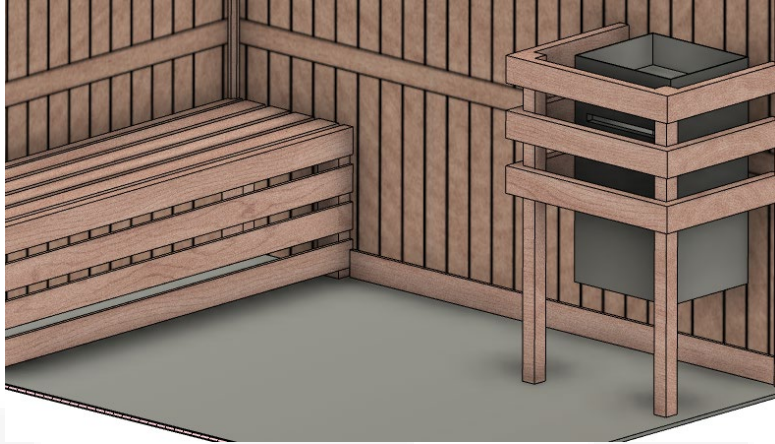


## 11. Heater Guard Rail

The heater should be mounted on the wall before the heater guard rail is built. This will ensure the electrical connections, intake vent, and guard rail are all centered on the heater. Follow the **Scandia Heater Installation Guide** for heater mounting, electrical connections and conduit location, and heater control box mounting.

- 1. Follow the spacing required based on the **Scandia Heater Installation Guide** for your heater guard rail, as different size heaters
- 2. Screw the horizontal boards to the vertical post, then attach the guard rail to the wall.



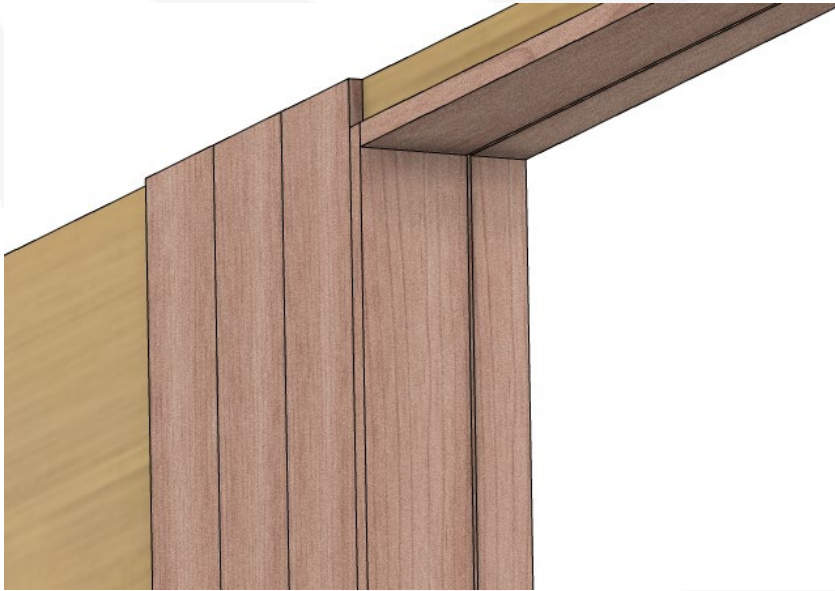


## 12. Door

-The door must swing outwards in a sauna.

-The door must have a 1 inch opening at the bottom for ventilation

1. Screw the door jamb to the door rough opening.



2. Mount the door inside of the door jamb, using screws to hang the hinges.
3. Screw the door stop into the door jamb in a position to allow the door to fully close
4. Brad nail the door casings onto the perimeter to hide the door jamb and door stop.

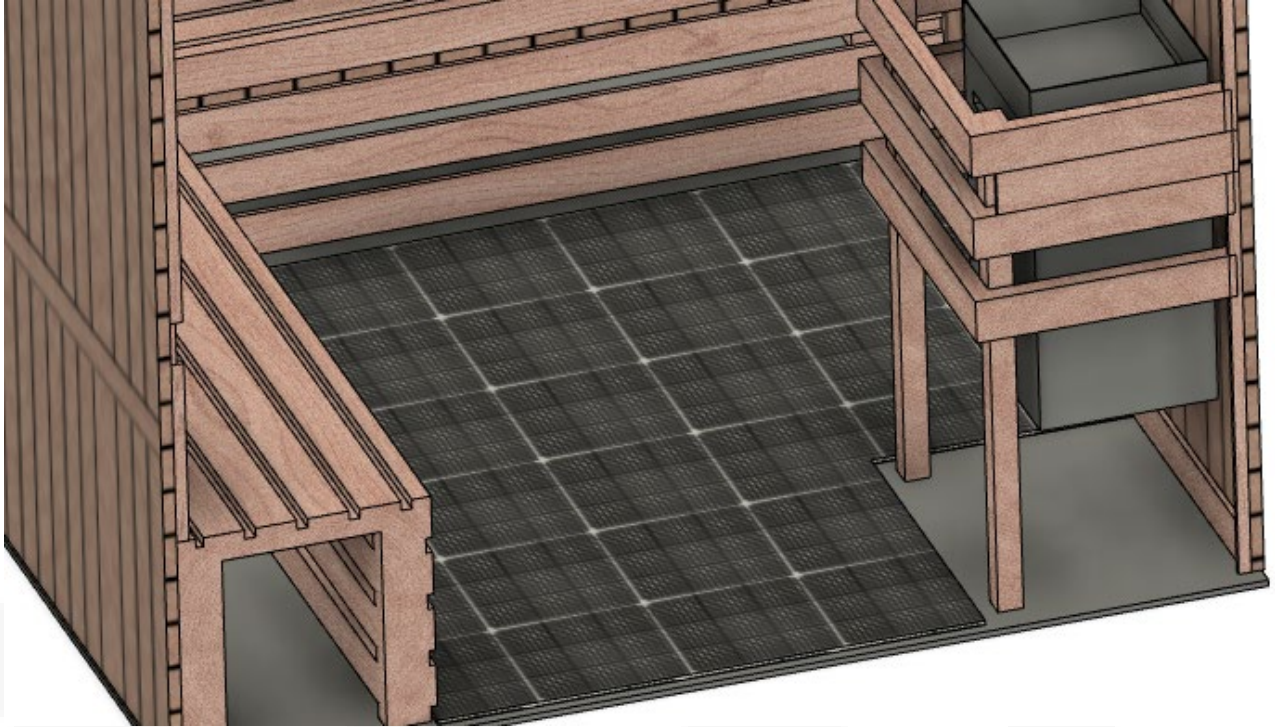


### 13. Flooring

- TruTile and Cedar Duckboard are the two available flooring options
- Flooring does not go underneath the benches
- NEVER put flooring underneath the heater or inside the heater guard rail.

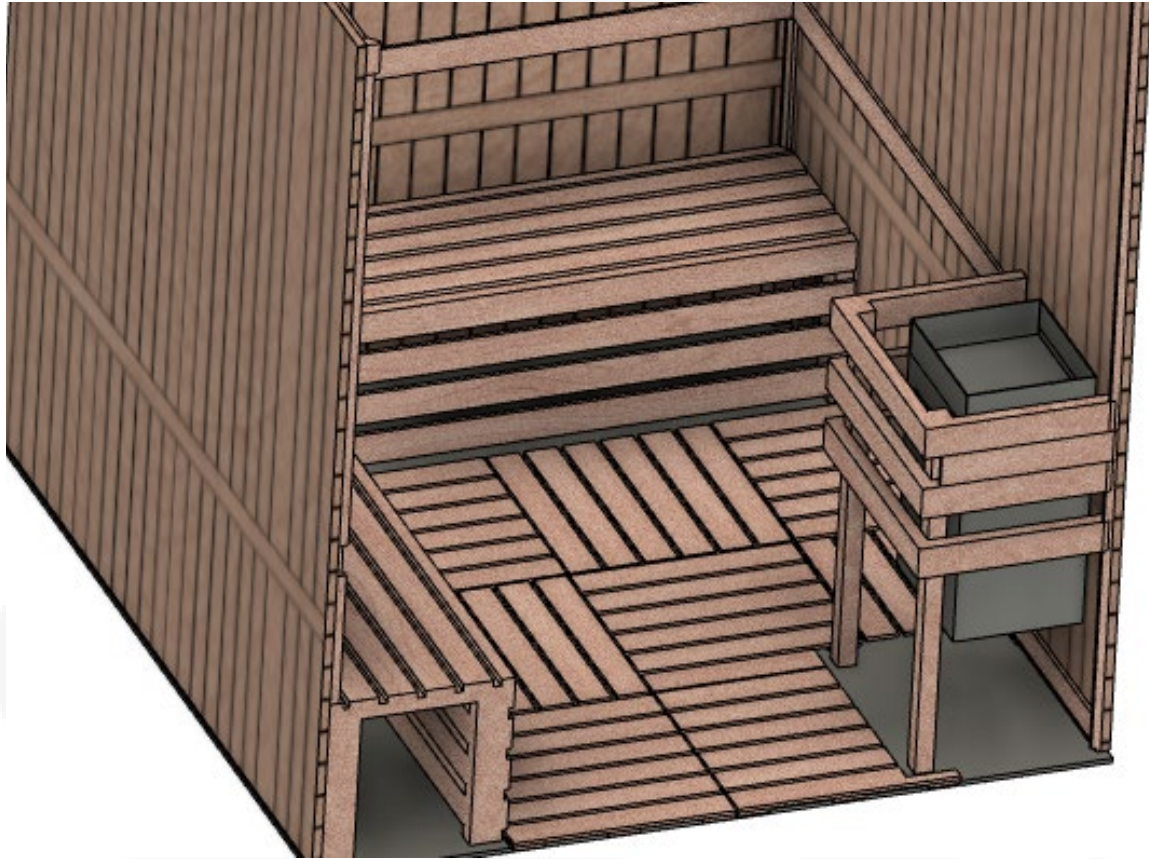
#### 9a. Tru Tile

- Tru Tile comes in 1'x1' interlocking squares.
- Start in the doorway, using the supplied transition to lead up to the Tru Tile.
- Trim the tiles to size using a utility knife
- Connect the interlocking tiles, using a mallet to pound them together to ensure a tight connection.



#### 9b. Cedar Duckboard

- Duckboard comes in 2' x 2' tiles
- Start in the doorway to ensure a neat transition, using the supplied threshold or transition to correct for elevation.
- Rip the duckboard to the necessary size using a skillsaw
- Place the duckboards on the floor, rotating each one 90 degrees to create a checkerboard pattern using shims as necessary to ensure it sits flat.



14. Enjoy your sauna!