



The best brands, the best products.

Your one stop shop for all sauna and steam needs.

Our Contact Information



1-888-503-8157



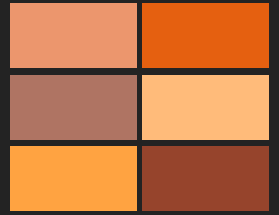
info@saunas.com

By providing superior service, providing a vast array of high-quality products, Saunas.com is the Internet's premier supplier of saunas, steam equipment, and accessories. We strive to make your visit at our website a fun and educational experience as well as a smooth purchase should you decide to honor us by buying a product. We hope you find a sauna to your liking, and many years of satisfying saunas in the future!

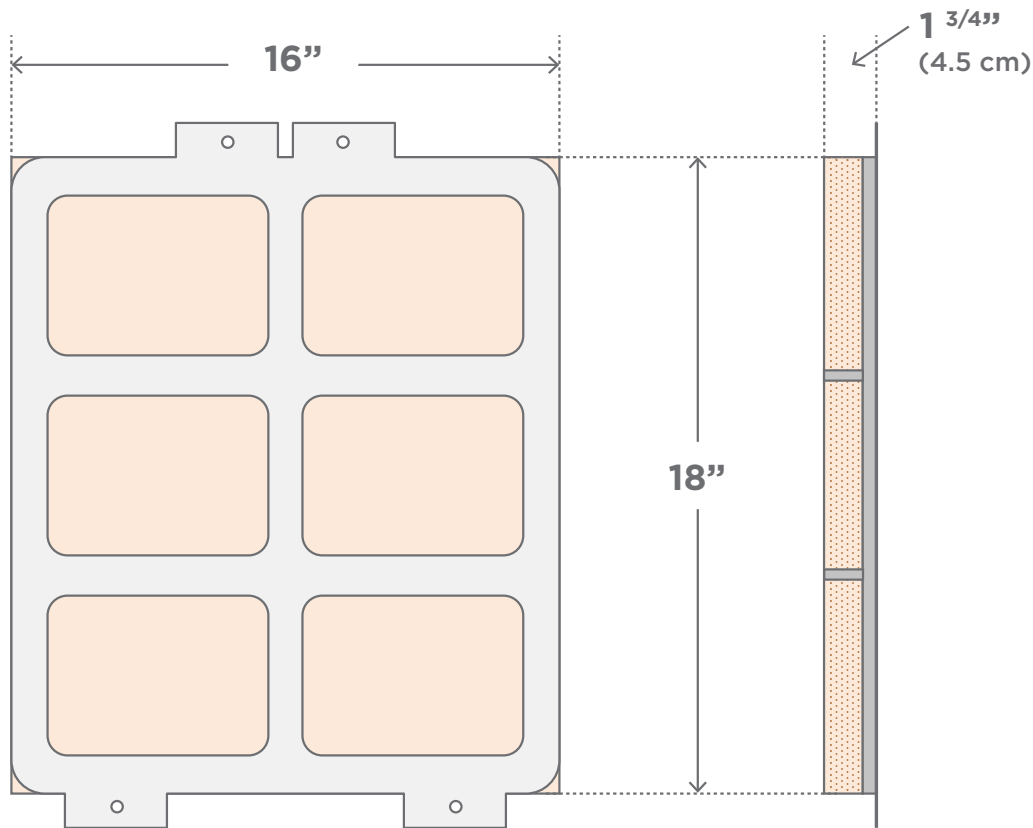
Please don't hesitate to call or email us with any questions you may have!

SUN VALLEY SALT

INSTALLATION INSTRUCTIONS



Salt Wall Systems Hanging Wall Snap Fit Design

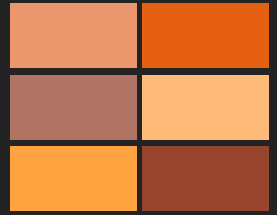


Back View

Side View



INSTALLATION INSTRUCTIONS



Hanging Wall Panel for Existing Wall Structure

The following example is for a 10 panel (W 80" x H 36") salt wall.

1. Prepare Wood Mounting Platform

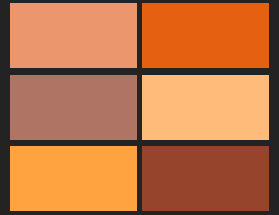
Individual salt panels weigh 22lbs [10kg] which require a strong mounting platform. Most existing wall structures include drywall, CMU or brick. Unless the mounting surface is a minimum of 3/4" [1.9cm] wood, a Wood Mounting Platform for the panels is required.

Cut plywood (min 3/4" [1.9 cm] thickness) one inch bigger on all four sides than the dimensions of the size of the planned salt wall. For example: if salt wall dimension is W 80 x H 36, cut mounting board W 82 x H 38. (particle board not acceptable mounting surface). Ensure plywood is level and squared.

2. Install Wood Mounting System

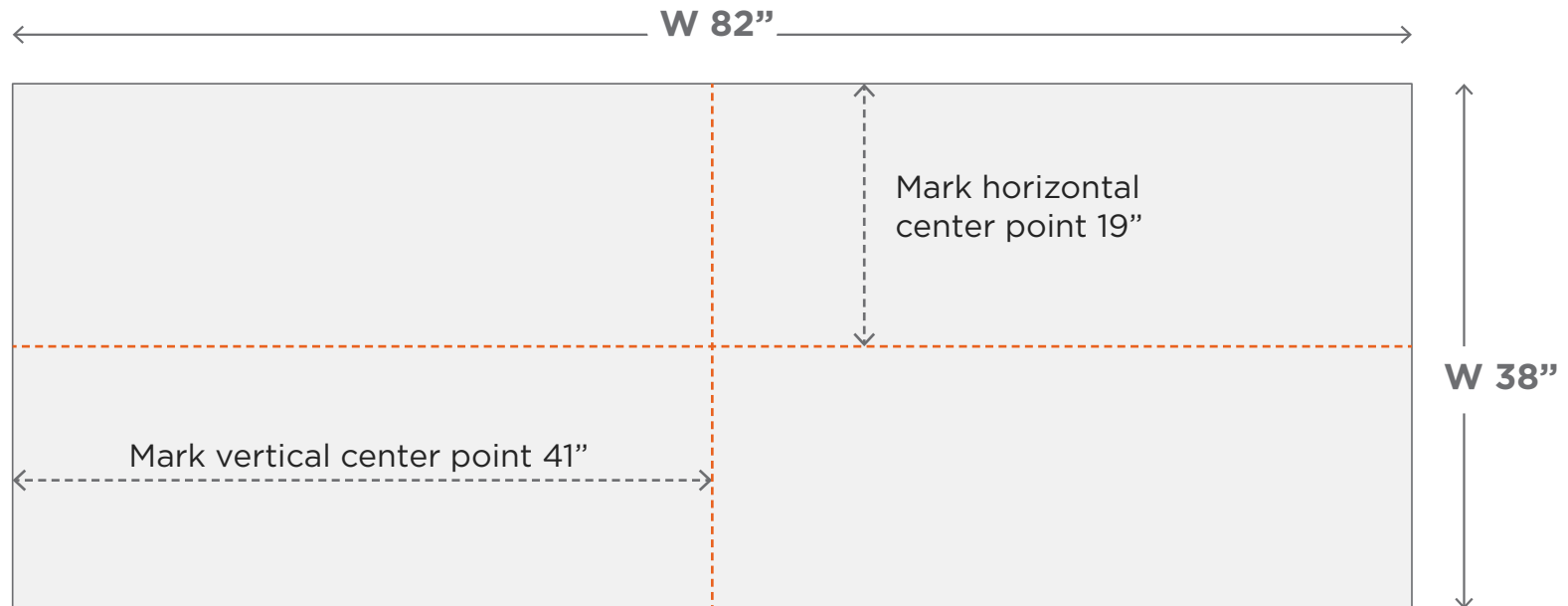
Salt walls can be installed at any elevation or angle. Once the location is determined, the mounting board must be anchored into structural wall components (e.g. framing or rock wall).

INSTALLATION INSTRUCTIONS



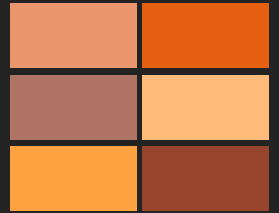
3. Mark Centerline

Once mounting board is anchored the center-lines must be distinguished. Strike both horizontal and vertical center-lines.



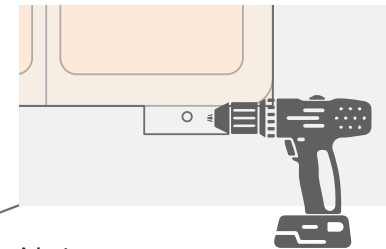
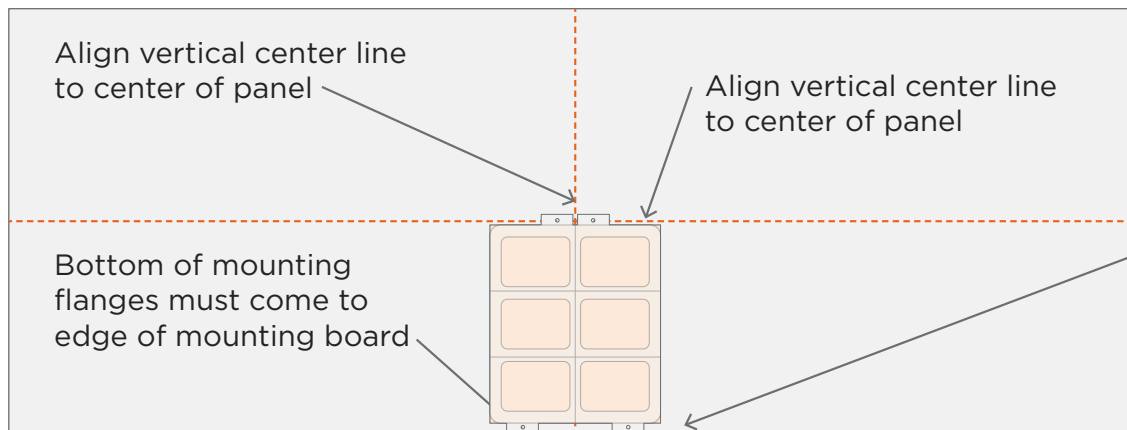
Example for 10 panel wall W 80" x H 36".
Mounting panel measures W 82" x H 38"

INSTALLATION INSTRUCTIONS



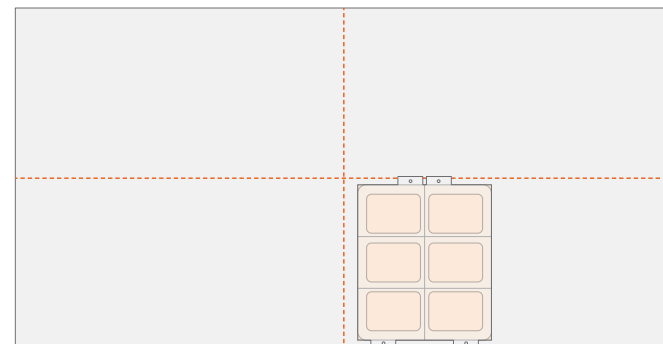
4. Install the Anchor Panels

The first panel installed in a salt wall is the most important, it's called the bottom anchor panel. The bottom anchor panel needs to be the center panel of the bottom row. If the bottom row contains an even number of panels, the anchor panel needs to be the center right panel.

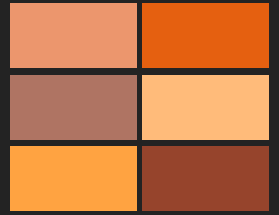


Note:
Use driver to mount stainless panel screws

Note:
If row consists of even number of panels, begin with the center right panel as the anchor panel.

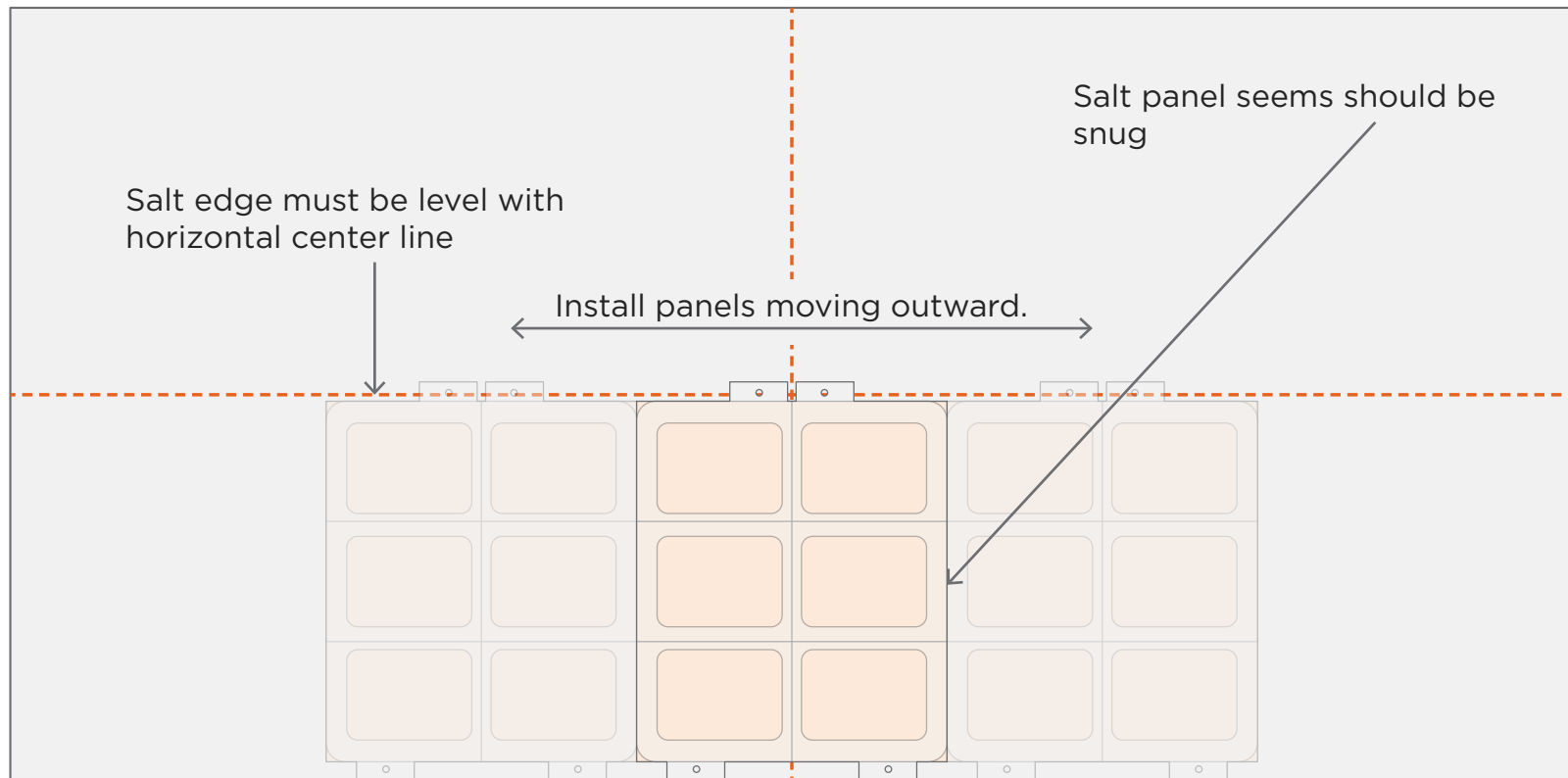


INSTALLATION INSTRUCTIONS

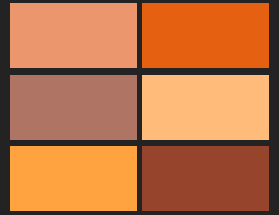


5. Install the Row Panels

Once the center Anchor Panel is installed. Mounting remaining row panels outward. Justify each panel to be level with the horizontal center line and a snug seam with the adjacent panel.



INSTALLATION INSTRUCTIONS



6. Install Second Row Panels

Once second row Anchor is complete, install second row panels outward. Assure there is a snug seam at the bottom. Use an Angle Square to assure 90 degrees on both lower corners (adjust as necessary).

