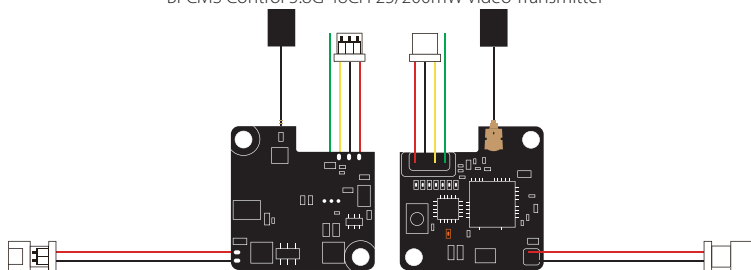


# RunCam TX200U-US

BFCMS Control 5.8G 48CH 25/200mW Video Transmitter



## Frequency Setup

Button Function Switching  
 · Short press to CH;  
 · Long press 2 seconds to BAND;  
 · Long press 5 seconds to POWER;

## Parameter

Frequency Channel: 5.8G 48CH  
 Output Power: 25mW / 200mW  
 Working Current: 5V@150~400mA  
 Voltage out: 5V@max 250mA  
 Voltage in: 1S 3.5-5.5V

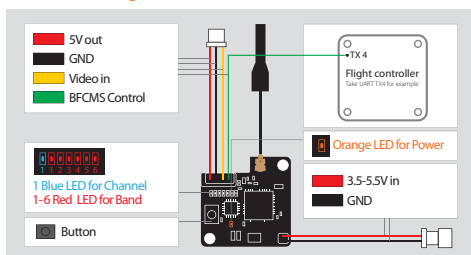
Video Input Impedance: 75 Ohm  
 Antenna : U.FL 5.8G 2dB Omni antenna  
 Weight: 2.5g (with antenna)  
 PCB Size: 19mm\*19mm

## LED Status

1 Blue CH LED  
 CH1 ON, CH2~8 OFF;  
 5 Red Band LEDs  
 Represents respectively 1~5 Band

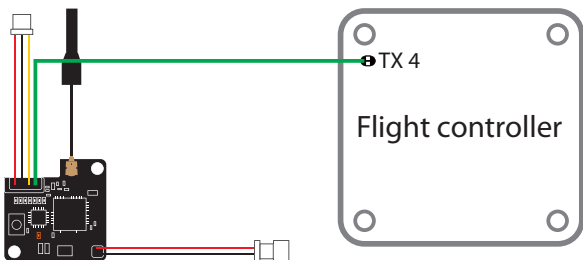
1 Orange Power LED  
 Orange LED **blinks quickly**—PIT Mode  
 Orange LED **off**—25mW  
 Orange LED **constantly on**—200mW

## Instruction diagram



## 1. Flight controller wiring

Note: Take UART4 for example

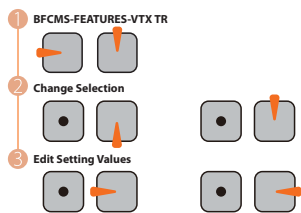


## 2. Betaflight 3.1 or above setting

Identifier	Configuration/MS	Serial Rx	Telemetry Output	Sensor Input	Peripherals
USB VCP	<input checked="" type="checkbox"/> 115200	<input type="checkbox"/>	Disabled AUTO	Disabled AUTO	Disabled AUTO
UART1	<input type="checkbox"/> 115200	<input type="checkbox"/>	Disabled AUTO	Disabled AUTO	Disabled AUTO
UART2	<input type="checkbox"/> 115200	<input checked="" type="checkbox"/>	Disabled AUTO	Disabled AUTO	Disabled AUTO
UART3	<input type="checkbox"/> 115200	<input type="checkbox"/>	Disabled AUTO	Disabled AUTO	Disabled AUTO
UART4	<input type="checkbox"/> 115200	<input type="checkbox"/>	Disabled AUTO	Disabled AUTO	<b>IRC Tramp</b> AUTO
UART5	<input type="checkbox"/> 115200	<input type="checkbox"/>	Disabled AUTO	Disabled AUTO	Disabled AUTO

## 3. Remote control

Note: Take Mode-2 for example



• If you connect VTX to Flight Controller (BetaFlight 3.3 or above) IRC Tramp protocol, the VTX will be controlled by Flight Controller and its frequency will be changed to F1 5740 and the button on VTX will give no more reaction.

BFOSD 25mw	VTX 25mw
BFOSD 100mw	VTX 25mw
BFOSD 200mw	VTX 200mw
BFOSD 400mw	VTX 200mw
BFOSD 600mw	VTX 200mw

## US Version 37 Channels

Channel	CH1	CH2	CH3	CH4	CH5	CH6	CH7	CH8
1 Band A	5865	5845	5825	5805	5785	5765	5745	5725
2 Band B	5733	5752	5771	5790	5809	5828	5847	5866
3 Band E	5705	5685	5665	5645	5885	5905	5925	5945
4 Fatshark	5740	5760	5780	5800	5820	5840	5860	5880
5 Race Band	5658	5695	5732	5769	5806	5843	5880	5917