

MAMBA STACK

MAMBA MK4 H743 V2



Stack Specifications:

MCU	STM32H743
Frequency	480MHz
GYRO	DUAL ICM-42688-P
OSD	AT7456E
Blackbox	128M Memory
Barometer	SPL06
Uarts	8 Set
Receiver	CRSF/SBUS/IBUS/DSM
I2C	Yes
F.Port	Yes
Buzzer Pad	Yes
CURR Pad	Yes
ESC Signal	8 Set
BEC 3.3V	0.5A
BEC 5V	3A
BEC 9V	3A
MB LED	Yes
BF LED	Yes
AIR UNIT Port	Yes
WIFI	SpeedyBee APP
VTX Switch	Yes
BEC Protection	Yes
Receiver Protection	Yes
TVS Protection	Yes
Input	3-6S Lipo
Soft Ware	Betaflight
Mounting	30.5x30.5mm/M3
Size	39.0x38.0x8.0mm
Weight	10.0g

The Default Port:

UART 1	Receiver
UART 2	Vacancy
UART 3	VTX
UART 4	WIFI
UART 5	Vacancy
UART 6	TELE
UART 7	Vacancy
UART 8	Vacancy

Target: MAMBA H743_2022B

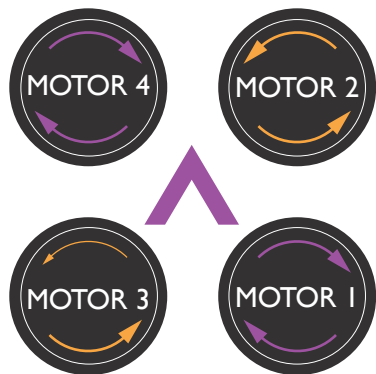
Main firmware	STM32 H743
Config file	MAMBA H743_2022B

Power indicator

Through the LED status (on/off), you can know whether the BEC works normally.

Please follow the flight control sequence.

GYRO	Blue
MCU	Orange
9V	Green
5V	White
3.3V	Red
VCC	Green



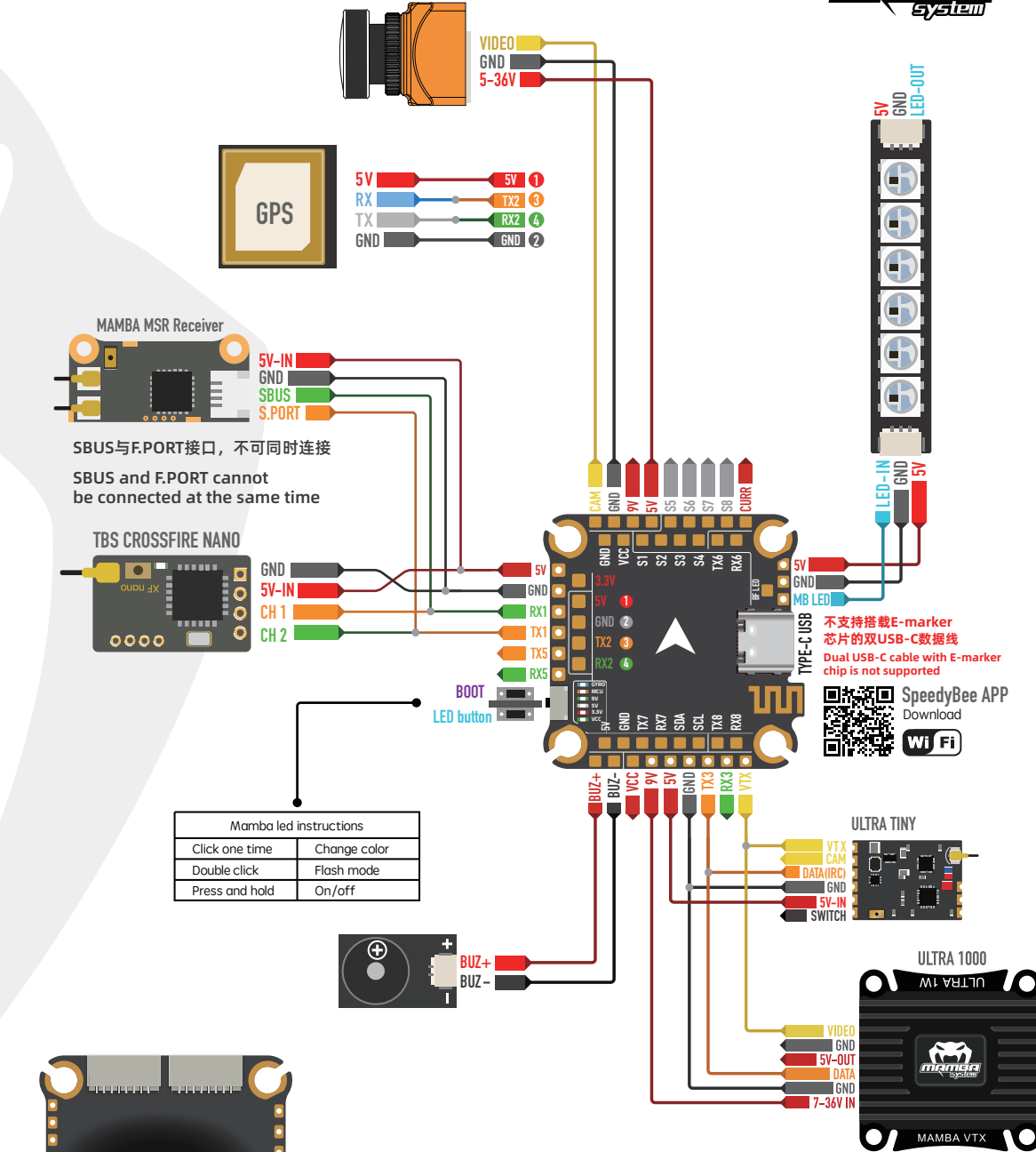
Adapt to ESC and parameters

MAMBA F55_128K ESC

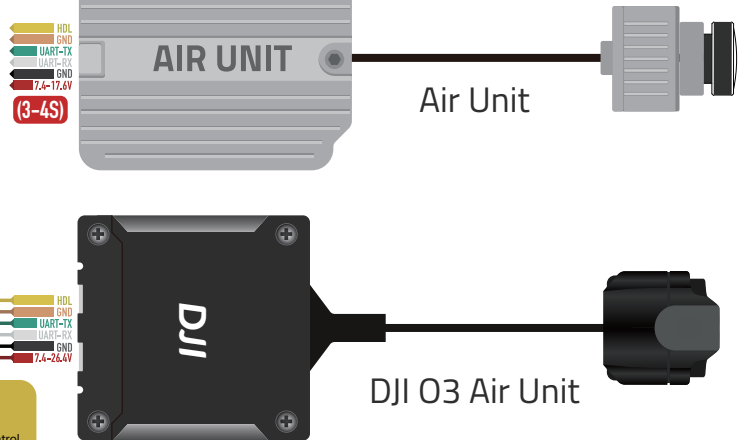
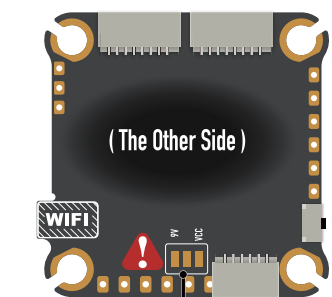
CURR	Yes
Telemetry	Yes
Output Current	55A
Peak Current	65A
Input	3-6S Lipo
BLheli	BLheli-32
PWM	24-128K
Target	MAMBA F55_128K
Protocol	Dshot 300/600/1200
Mounting	30.5x30.5mm, Ø 3
Size	44.5x40.0x7.5mm
Weight	15g

MAMBA F65_128K ESC

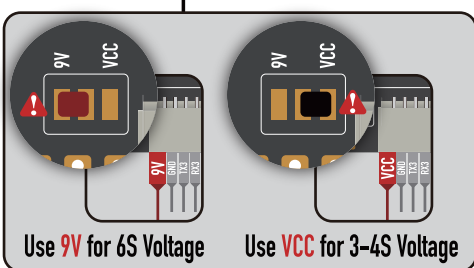
CURR	Yes
Telemetry	Yes
Output Current	65A
Peak Current	75A
Input	3-6S Lipo
BLheli	BLheli-32
PWM	24-128K
Target	MAMBA F65_128K
Protocol	Dshot 300/600/1200
Mounting	30.5x30.5mm, Ø 3
Size	44.5x40.0x7.5mm
Weight	15g



Mamba led instructions	
Click one time	Change color
Double click	Flash mode
Press and hold	On/off



如果不使用DJI FPV遥控器, 请断开SBUS(RX1)的连接。
If not using DJI FPV remote control, Please disconnect the SBUS(RX1).



接线前请检查电压! (默认9V电压)

图传电源开关通道: USER1
默认连通, 设置通道后控制电源开启或关闭

Please check the voltage before wiring! (default 9V voltage)

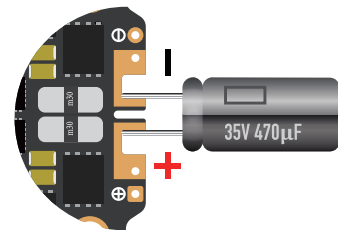
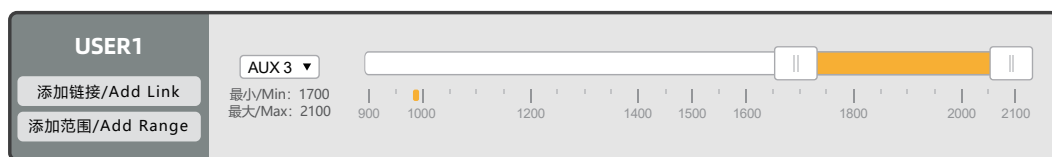
VTX power switch channel: USER1
Connected by default, control the power on or off after setting the channel

将 USER1 对应到遥控器的AUX通道。(如下图所示)

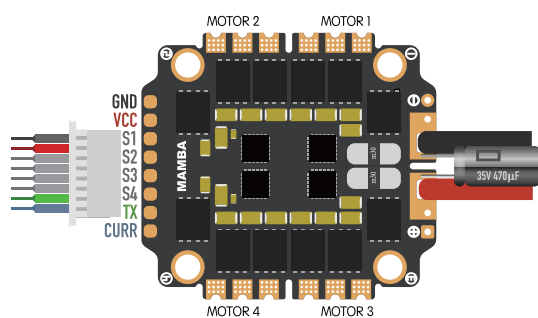
Correspond USER1 to the AUX channel of the remote control.(As shown in the following figure)

将 USER1 对应到遥控器的AUX通道。(如下图所示)

Correspond USER1 to the AUX channel of the remote control.(As shown in the following figure)



Capacitor requested when using 6S battery



MAMBA F55/F65_128K

MAMBA F55_128K ESC		Amperage Meter	
Battery	0.00A	80	Scale[1/10th mV/A]
		0	Offset [mA]

MAMBA F65_128K ESC		Amperage Meter	
Battery	0.00A	80	Scale[1/10th mV/A]
		0	Offset [mA]

Betaflight是开源软件, 自行刷写固件将可能导致产品工作不稳定。

为了你的安全, 地面站设置必须拆除螺旋桨。

Since Betaflight is open source software, and self-flashing the firmware will likely result in an unstable working product.

For your safety, the propeller must be removed for betaflight setup.