

MAMBA STACK

MAMBA MK4 F740 AIO



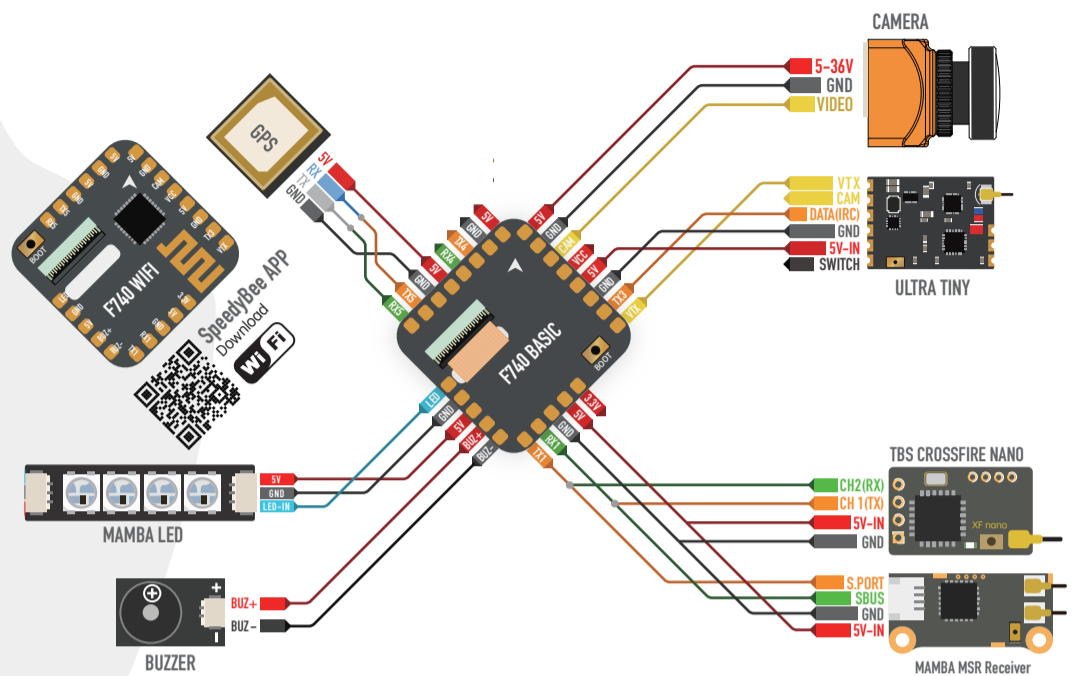
Stack Specifications:

MCU	STM32F722
Frequency	216MHz
GYRO	ICM-42688-P
OSD	AT7456E
Blackbox	16M Memory
Barometer	Yes
Uarts	6 Set
Receiver	CRSF/SBUS/IBUS/DSM
I2C	Yes
F.Port	Yes
Buzzer Pad	Yes
Amperage Meter	240 Scale[1/10th mV/A]
Motor Signal	4 Set
BEC 3.3V	0.5A
BEC 5V	2.0A
BF LED	Yes
AIR UNIT Port	Yes
Input	3-6S Lipo
BEC Protection	Yes
Receiver Protection	Yes
TVS Protection	Yes
Soft Ware	Betaflight
Mounting	25.5x25.5mm/M2
Size	34x 34x10mm
Weight	11g

Target: MAMBA F722_2022B

Main firmware	STM32 F7X2
Config file	MAMBA F722_2022B

副板Deputy board



SBUS与F.PORT接口，不可同时连接
SBUS and F.PORT cannot be connected at the same time

主板Mother board

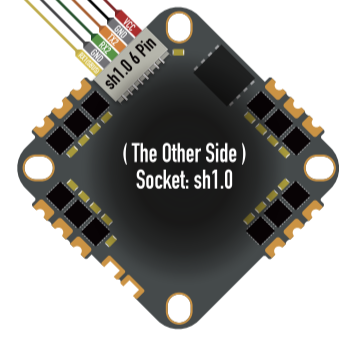
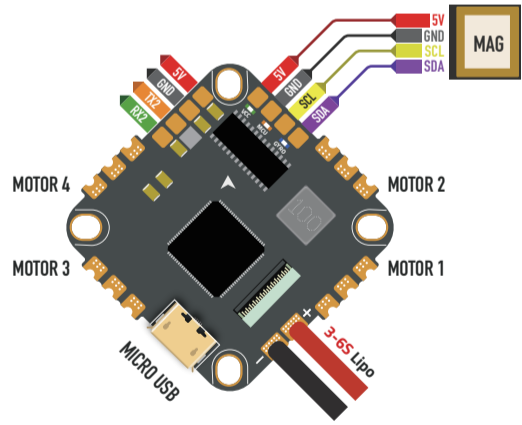
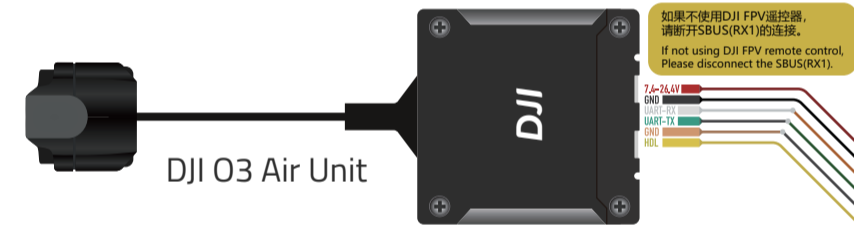
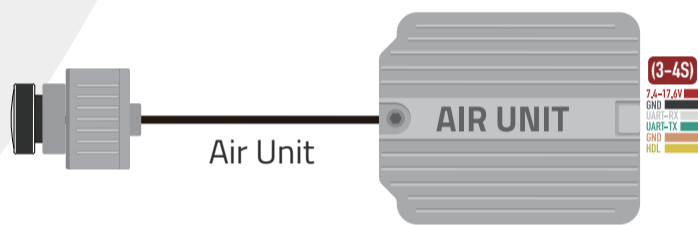
The Default Port:

MAMBA MK4 F740 AIO WIFI

UART 1	Receiver
UART 2	DJI
UART 3	VTX
UART 4	WIFI(SpeedyBee APP)
UART 5	Vacancy
UART 6	TELE

MAMBA MK4 F740 AIO BASIC

UART 1	Receiver
UART 2	DJI
UART 3	VTX
UART 4	Vacancy
UART 5	Vacancy
UART 6	TELE

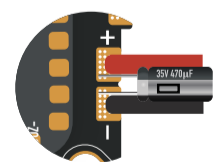
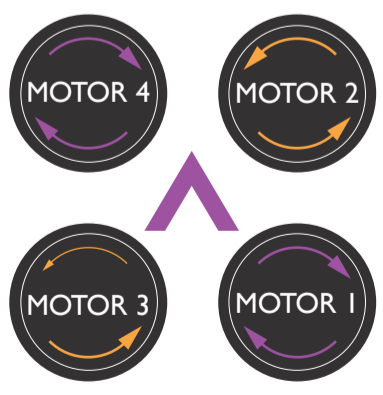


Power indicator

Through the LED status (on / off), you can know whether the BEC works normally.

GYRO	Blue
MCU	Orange
VCC	Green

Please follow the flight control sequence.



⚠ Capacitor requested when using 6S battery

MAMBA F40_128K ESC		Amperage Meter
Battery	0.00A	240 Scale[1/10th mV/A]
		0 Offset [mA]

ESC

CURR	Yes
Telemetry	Yes
Output Current	40A
Peak Current	45A
Input	3-6S Lipo
BLheli	BLheli-32
PWM	24-128K
Target	MAMBA F40_128K
Protocol	Dshot 300/600

Betaflight是开源软件，自行刷写固件将可能导致产品工作不稳定。为了你的安全，地面站设置必须拆除螺旋桨。
Since Betaflight is open source software, and self-flashing the firmware will likely result in an unstable working product. For your safety, the propeller must be removed for betaflight setup.