

MAMBA STACK

FC :MAMBA Basic F405 MK3 Lite
ESC:MAMBA F50 PRO



Stack Specifications:

MCU	STM32F405RGT6
Frequency	168MHz
GYRO	MPU6000
OSD	AT7456E
Blackbox	16M Memory
Uarts	5 Set
Receiver	TBS/SBUS/IBUS/DSM
I2C	Yes
RSSI Pad	Yes
F.Port	Yes
Buzzer Pad	Yes
CURR Pad	Yes
ESC Signal	4 Set
BEC 3.3V	0.5A
BEC 5V	3A
BEC 9V (DJI Power)	3A
BF LED	Yes
Input	6S Lipo
TVS Protection	Yes
Soft Ware	Betaflight
Mounting	30.5×30.5mm,M3
Size	38.0×39.0×7.5mm
Weight	9.0g

Web: www.diatone.us

Target: MAMBAF405US_I2C

Main firmware STM32 F405

Config file MAMBAF405US_I2C

When Using Compass Magnetometer,

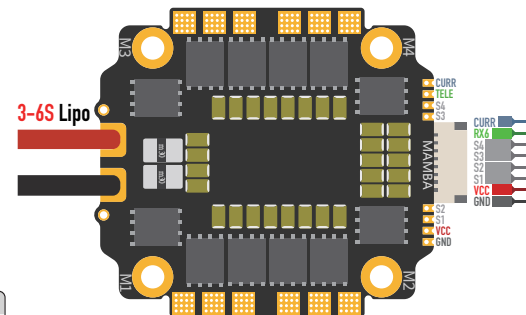
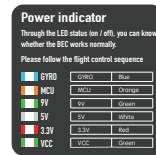
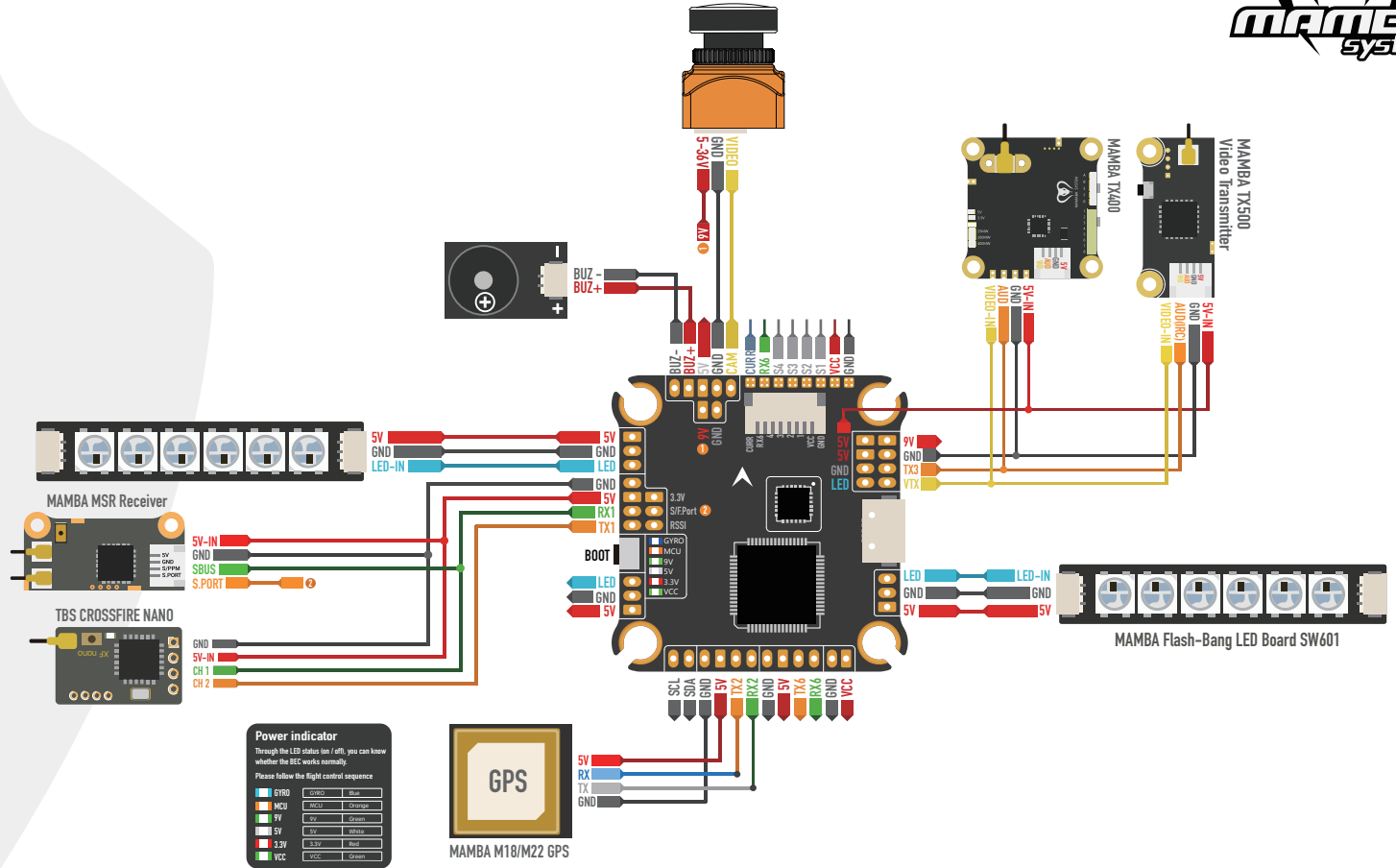
Following Command:

set mag_i2c_device = 1

set mag_bustype = i2c

The Default Port:

- UART 1 Receiver
- UART 2 Vacancy
- UART 3 VTX
- UART 5 S/F.Port
- UART 6 TELE/Vacancy



MAMBA F50 PRO ESC

ESC

CURR	Yes
Telemetry	Yes
Output Current	50A
Peak Current	55A
Input	3-6S Lipo
BLheli-32	Yes
Target	MAMBA F50 PRO
Protocol	Dshot 300/600/1200
Mounting	30.5×30.5mm,∅ 3
Size	45.0×41.0×6.5mm
Weight	15g

MAMBA STACK

FC :MAMBA Basic F405 MK3 Lite
ESC:MAMBA F60 PRO



Stack Specifications:

MCU	STM32F405RGT6
Frequency	168MHz
GYRO	MPU6000
OSD	AT7456E
Blackbox	16M Memory
Uarts	5 Set
Receiver	TBS/SBUS/IBUS/DSM
I2C	Yes
RSSI Pad	Yes
F.Port	Yes
Buzzer Pad	Yes
CURR Pad	Yes
ESC Signal	4 Set
BEC 3.3V	0.5A
BEC 5V	3A
BEC 9V (DJI Power)	3A
BF LED	Yes
Input	6S Lipo
TVS Protection	Yes
Soft Ware	Betaflight
Mounting	30.5×30.5mm,M3
Size	38.0×39.0×7.5mm
Weight	9.0g

Web: www.diatone.us

Target: MAMBAF405US_I2C

Main firmware STM32 F405

Config file MAMBAF405US_I2C

When Using Compass Magnetometer;

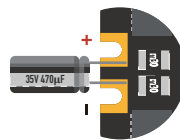
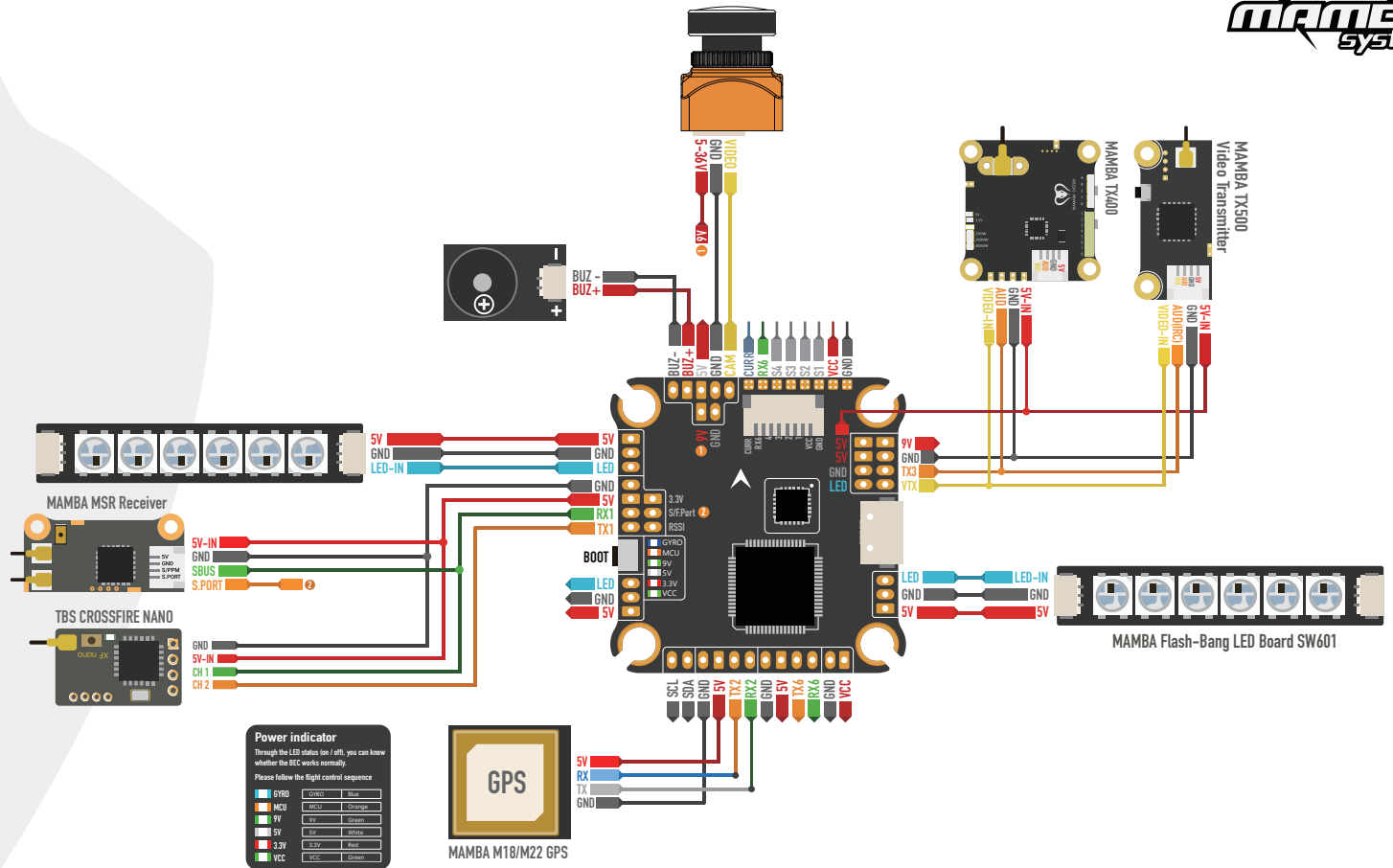
Following Command:

set mag_i2c_device = 1

set mag_bustype = i2c

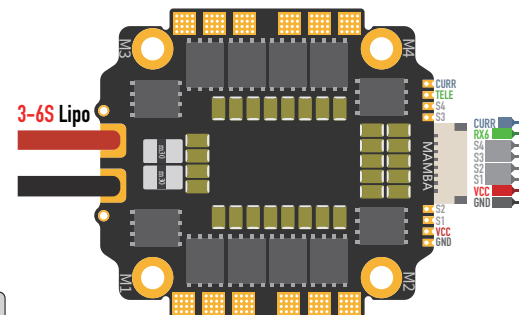
The Default Port:

- UART 1 Receiver
- UART 2 Vacancy
- UART 3 VTX
- UART 5 S/F.Port
- UART 6 TELE/Vacancy



Capacitor requested when using 6S battery

Amperage Meter			
Battery	0.00A	115	Scale[1/10th mV/A]
		0	Offset [mA]



MAMBA F60 PRO ESC

ESC

CURR	Yes
Telemetry	Yes
Output Current	60A
Peak Current	75A
Input	3-6S Lipo
BLheli-32	Yes
Target	MAMBA F60 PRO
Protocol	Dshot 300/600/1200
Mounting	30.5×30.5mm,∅ 3
Size	45.0×41.0×6.5mm
Weight	15g

MAMBA STACK

FC :MAMBA Basic F405 MK3 Lite
ESC:MAMBA F50



Stack Specifications:

MCU	STM32F405RGT6
Frequency	168MHz
GYRO	MPU6000
OSD	AT7456E
Blackbox	16M Memory
Uarts	5 Set
Receiver	TBS/SBUS/IBUS/DSM
I2C	Yes
RSSI Pad	Yes
F.Port	Yes
Buzzer Pad	Yes
CURR Pad	Yes
ESC Signal	4 Set
BEC 3.3V	0.5A
BEC 5V	3A
BEC 9V (DJI Power)	3A
BF LED	Yes
Input	6S Lipo
TVS Protection	Yes
Soft Ware	Betaflight
Mounting	30.5×30.5mm,M3
Size	38.0×39.0×7.5mm
Weight	9.0g

Web: www.diatone.us

Target: MAMBAF405US_I2C

Main firmware STM32 F405

Config file MAMBAF405US_I2C

When Using Compass Magnetometer,

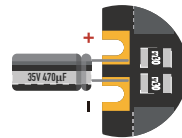
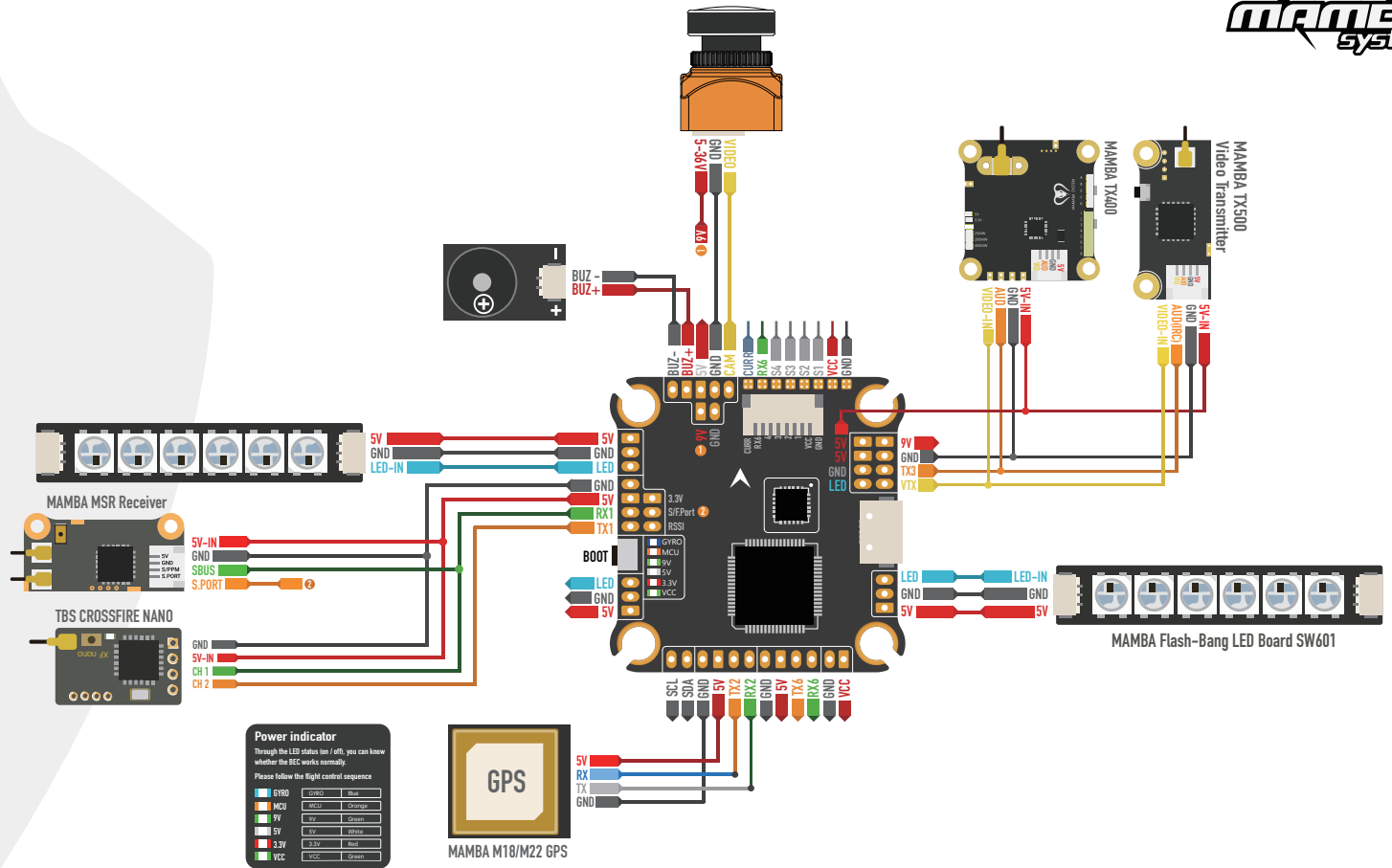
Following Command:

set mag_i2c_device = 1

set mag_bustype = i2c

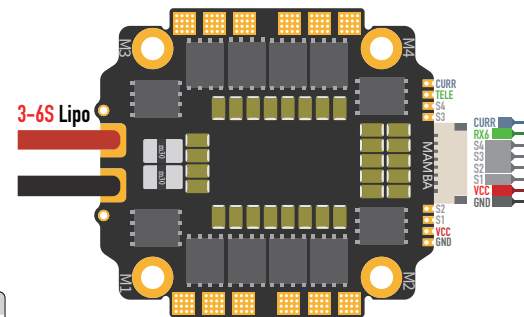
The Default Port:

- UART 1 Receiver
- UART 2 Vacancy
- UART 3 VTX
- UART 5 S/F.Port
- UART 6 TELE/Vacancy



Capacitor requested when using 6S battery

Amperage Meter			
Battery	0.00A	115	Scale[1/10th mV/A]
		0	Offset [mA]



MAMBA F50 ESC

ESC

CURR	Yes
Output Current	50A
Peak Current	55A
Input	3-6S Lipo
BLheli-32	Yes
Target	CH40
Protocol	Dshot 300/600
Mounting	30.5×30.5mm,∅ 3
Size	45.0×41.0×6.5mm
Weight	15g