

# MAMBA STACK

FC :MAMBA Basic F722 MINI MK3  
ESC:MAMBA F40\_BLS MINI



## Stack Specifications:

MCU	STM32F722RET6
Frequency	216MHz
GYRO	MPU6000
OSD	AT7456E
Blackbox	16M Memory
Barometer	Yes
Uarts	6 Set
Receiver	TBS/SBUS/IBUS/DSM
I2C	Yes
RSSI Pad	Yes
F.Port	Yes
Buzzer Pad	Yes
CURR Pad	Yes
ESC Signal	4 Set
BEC 3.3V	0.5A
BEC 5V	2.5A
BF LED	Yes
Input	6S Lipo
TVS Protection	Yes
Soft Ware	Betaflight
Mounting	20×20mm/M2
Size	30×29.5×5.5mm
Weight	5.0g

Web: [www.diatone.us](http://www.diatone.us)

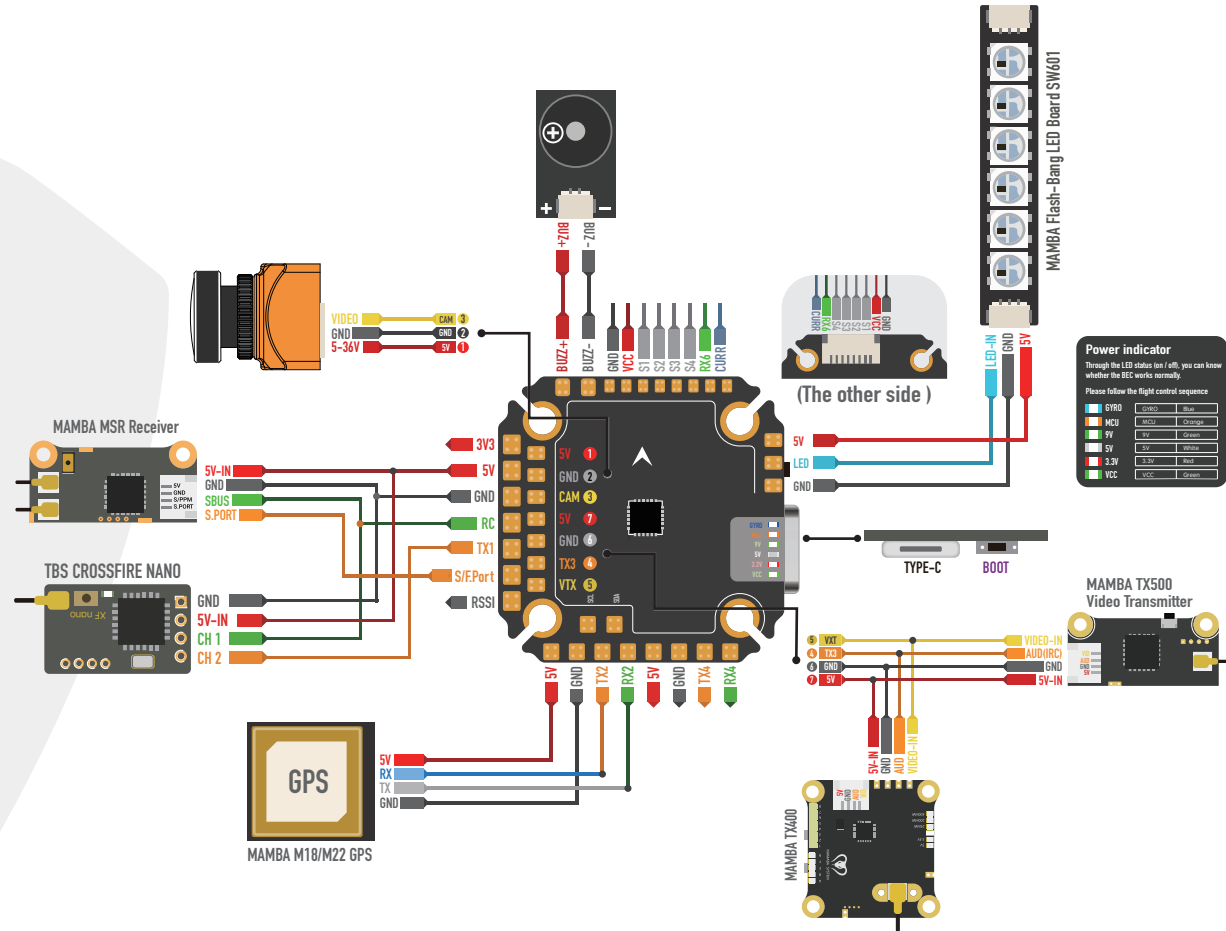
Target: MAMBAF722\_I2C  
Main firmware STM32 F7X2  
Config file MAMBAF722\_I2C

### The Default Port:

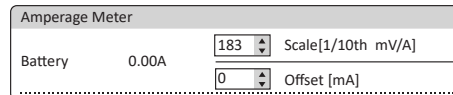
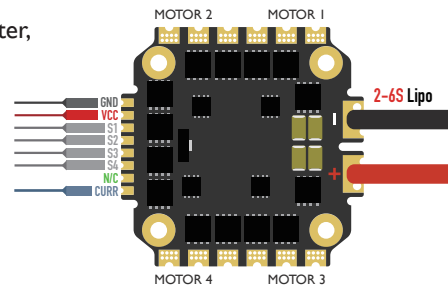
UART 1 Receiver  
UART 2 Vacancy  
UART 3 VTX  
UART 4 Vacancy  
UART 5 S/F.Port  
UART 6 TELE



When Using Compass Magnetometer,  
Following Command:  
set mag\_i2c\_device = 1  
set mag\_bustype = i2c



## MAMBA F40\_BLS MINI ESC



⚠ Capacitor requested when using 6S battery

## ESC

CURR	Yes
Output Current	40A
Peak Current	45A
Input	2-6S Lipo
BLheli-S	Yes
Target	CH40
Protocol	Dshot 300/600
Mounting	20×20mm, Ø 2/3
Size	29×29×5.5mm
Weight	6.5g

# MAMBA STACK

FC :MAMBA Basic F722 MINI MK3  
ESC:MAMBA F40 MINI PRO



## Stack Specifications:

MCU	STM32F722RET6
Frequency	216MHz
GYRO	MPU6000
OSD	AT7456E
Blackbox	16M Memory
Barometer	Yes
Uarts	6 Set
Receiver	TBS/SBUS/IBUS/DSM
I2C	Yes
RSSI Pad	Yes
F.Port	Yes
Buzzer Pad	Yes
CURR Pad	Yes
ESC Signal	4 Set
BEC 3.3V	0.5A
BEC 5V	2.5A
BF LED	Yes
Input	6S Lipo
TVS Protection	Yes
Soft Ware	Betaflight
Mounting	20×20mm/M2
Size	30×29.5×5.5mm
Weight	5.0g

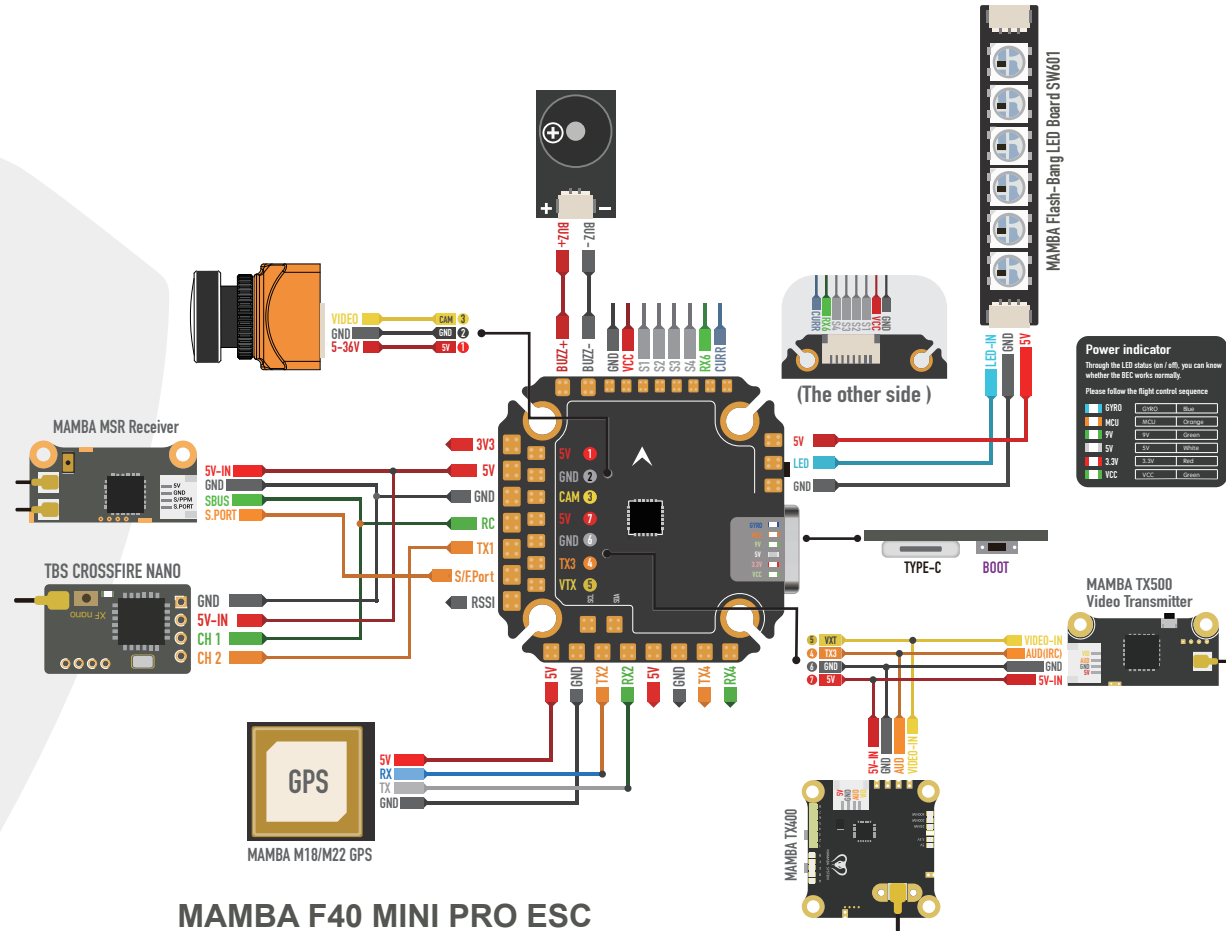
Web: [www.diatone.us](http://www.diatone.us)

Target: MAMBAF722\_I2C  
Main firmware STM32 F7X2  
Config file MAMBAF722\_I2C

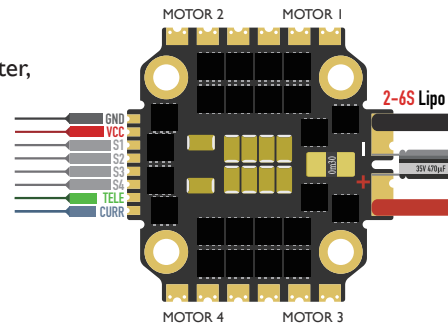
When Using Compass Magnetometer,  
Following Command:  
set mag\_i2c\_device = 1  
set mag\_bustype = i2c

### The Default Port:

UART 1 Receiver  
UART 2 Vacancy  
UART 3 VTX  
UART 4 Vacancy  
UART 5 S/F.Port  
UART 6 TELE



## MAMBA F40 MINI PRO ESC



Amperage Meter		
Battery	0.00A	Scale[1/10th mV/A]
	190	Offset [mA]
	0	

⚠ Capacitor requested when using 6S battery

## ESC

CURR	Yes
Telemetry	Yes
Output Current	40A
Peak Current	45A
Input	2-6S Lipo
BLheli-32	Yes
Target	MAMBA F40 MINI PRO
Protocol	Dshot 300/600/1200
Mounting	20×20mm, Ø 2/3
Size	31×31×6.5mm
Weight	6.5g

# MAMBA STACK

FC :MAMBA Basic F722 MINI MK3  
ESC:MAMBA F30 Mini



## Stack Specifications:

MCU	STM32F722RET6
Frequency	216MHz
GYRO	MPU6000
OSD	AT7456E
Blackbox	16M Memory
Barometer	Yes
Uarts	6 Set
Receiver	TBS/SBUS/IBUS/DSM
I2C	Yes
RSSI Pad	Yes
F.Port	Yes
Buzzer Pad	Yes
CURR Pad	Yes
ESC Signal	4 Set
BEC 3.3V	0.5A
BEC 5V	2.5A
BF LED	Yes
Input	6S Lipo
TVS Protection	Yes
Soft Ware	Betaflight
Mounting	20×20mm/M2
Size	30×29.5×5.5mm
Weight	5.0g

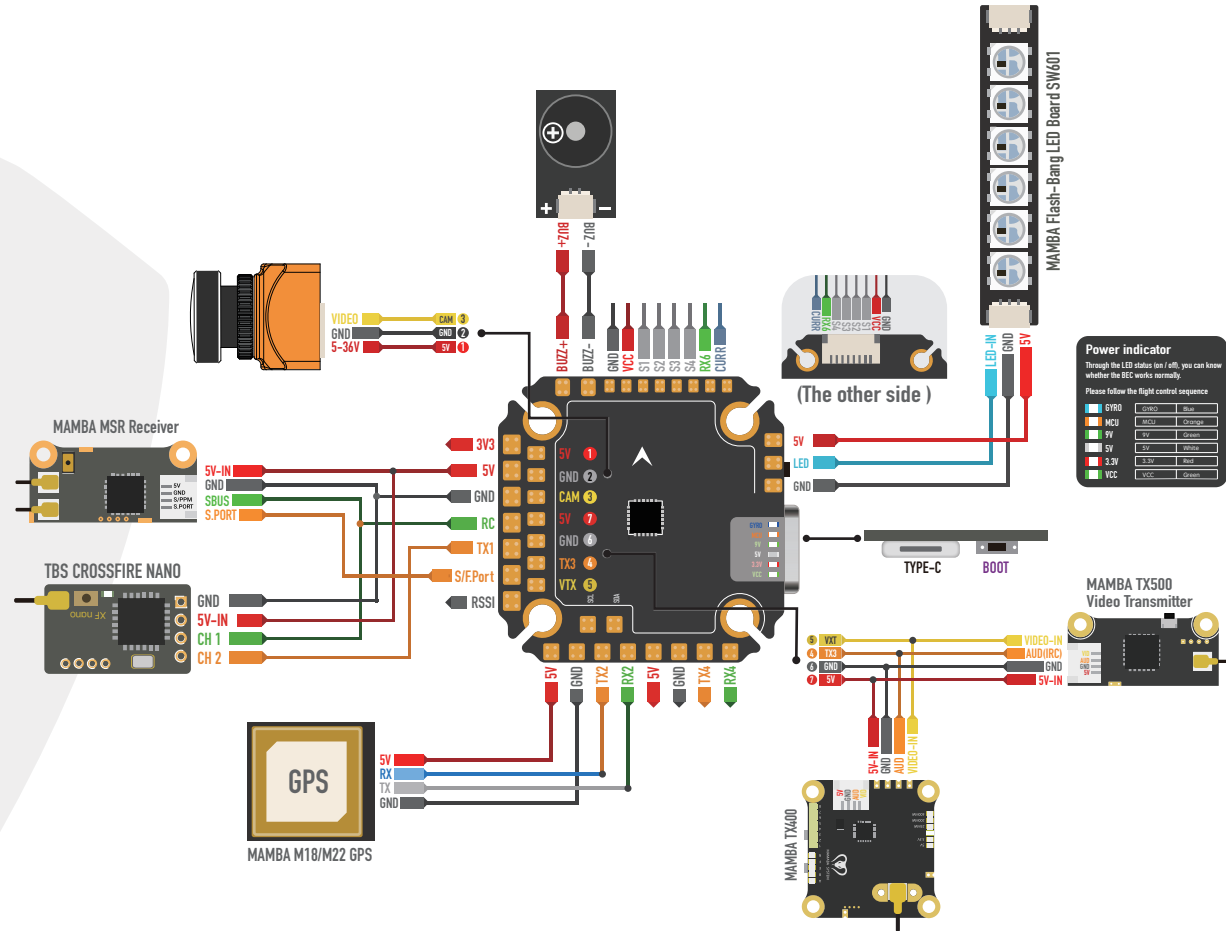
Web: [www.diatone.us](http://www.diatone.us)

Target: MAMBAF722\_I2C  
Main firmware STM32 F7X2  
Config file MAMBAF722\_I2C

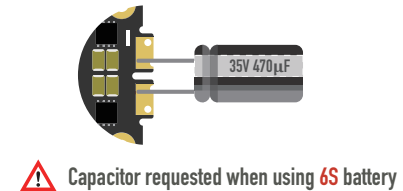
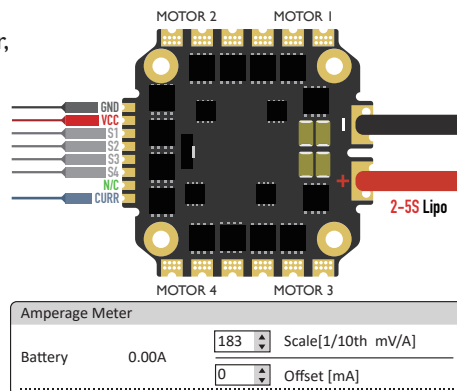
When Using Compass Magnetometer,  
Following Command:  
set mag\_i2c\_device = 1  
set mag\_bustype = i2c

### The Default Port:

UART 1 Receiver  
UART 2 Vacancy  
UART 3 VTX  
UART 4 Vacancy  
UART 5 S/F.Port  
UART 6 TELE



## MAMBA F30 Mini ESC



## ESC

CURR	Yes
Output Current	30A
Peak Current	40A
Input	2-5S Lipo
BLheli-S	Yes
Target	CH40
Protocol	Dshot 300/600
Mounting	20×20mm, ∅ 2/3
Size	29×29×5.5mm
Weight	6g