

MAMBA STACK

FC :MAMBA Basic APP F722 MK I
ESC:MAMBA F50 PRO



Stack Specifications:

MCU	STM32F722RET6
Frequency	216MHz
GYRO	MPU6000
OSD	AT7456E
Blackbox	16M Memory
Uarts	6 Set
Receiver	TBS/SBUS/IBUS/DSM
I2C	Yes
RSSI Pad	Yes
F.Port	Yes
Buzzer Pad	Yes
CURR Pad	Yes
ESC Signal	4 Set
BEC 3.3V	0.5A
BEC 5V	3A
BEC 9V (DJI Power)	3A
MB LED	Yes
BF LED	Yes
WIFI	Yes
Input	6S Lipo
TVS Protection	Yes
Soft Ware	Betaflight
Mounting	30.5×30.5mm/M3
Size	38.0×41.5×7.5mm
Weight	9.5g

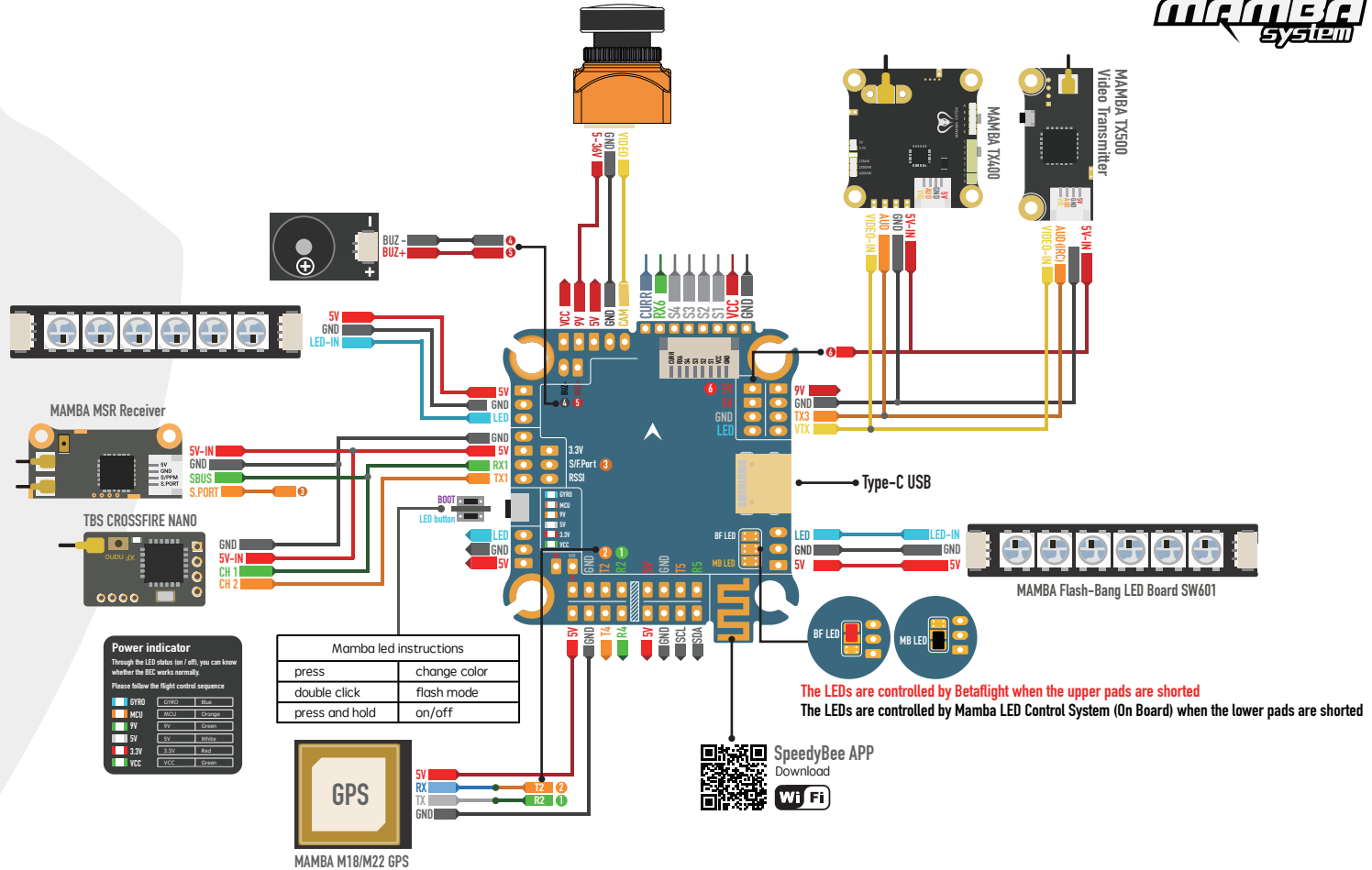
Web: www.diatone.us

Target: MAMBAF722_I2C
Main firmware STM32 F7X2
Config file MAMBAF722_I2C

When Using Compass Magnetometer,
Following Command:
set mag_i2c_device = 1
set mag_bustype = i2c

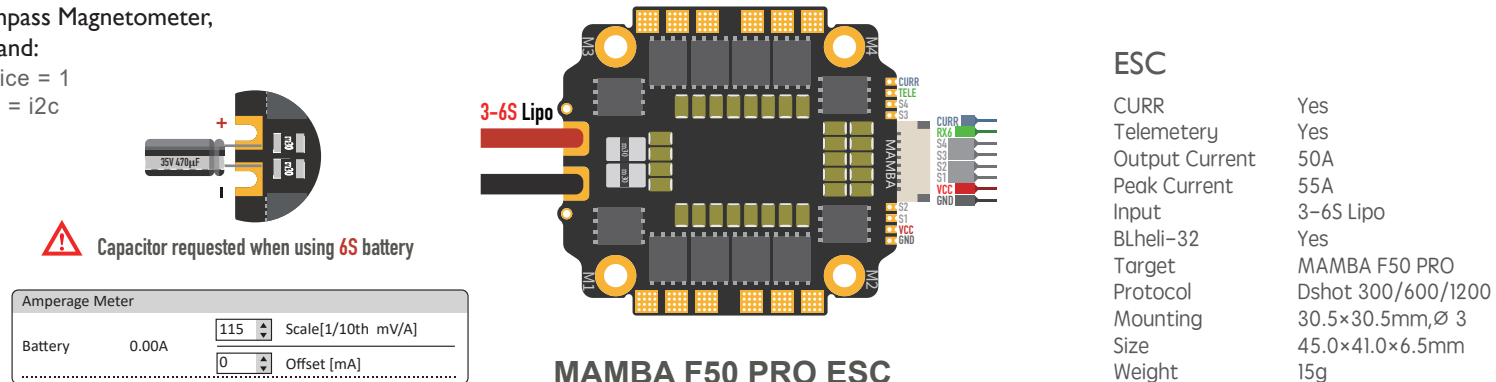
The Default Port:

- UART 1 Receiver
- UART 2 Vacancy
- UART 3 VTX
- UART 4 WIFI
- UART 5 S/F.Port
- UART 6 TELE



The Default Port:

- UART 1 Receiver
- UART 2 Vacancy
- UART 3 VTX
- UART 4 WIFI
- UART 5 S/F.Port
- UART 6 TELE



ESC

CURR	Yes
Telemetry	Yes
Output Current	50A
Peak Current	55A
Input	3-6S Lipo
BLheli-32	Yes
Target	MAMBA F50 PRO
Protocol	Dshot 300/600/1200
Mounting	30.5×30.5mm,∅ 3
Size	45.0×41.0×6.5mm
Weight	15g

MAMBA STACK

FC :MAMBA Basic APP F722 MK I
ESC:MAMBA F60 PRO



Stack Specifications:

MCU	STM32F722RET6
Frequency	216MHz
GYRO	MPU6000
OSD	AT7456E
Blackbox	16M Memory
Uarts	6 Set
Receiver	TBS/SBUS/IBUS/DSM
I2C	Yes
RSSI Pad	Yes
F.Port	Yes
Buzzer Pad	Yes
CURR Pad	Yes
ESC Signal	4 Set
BEC 3.3V	0.5A
BEC 5V	3A
BEC 9V (DJI Power)	3A
MB LED	Yes
BF LED	Yes
WIFI	Yes
Input	6S Lipo
TVS Protection	Yes
Soft Ware	Betaflight
Mounting	30.5×30.5mm/M3
Size	38.0×41.5×7.5mm
Weight	9.5g

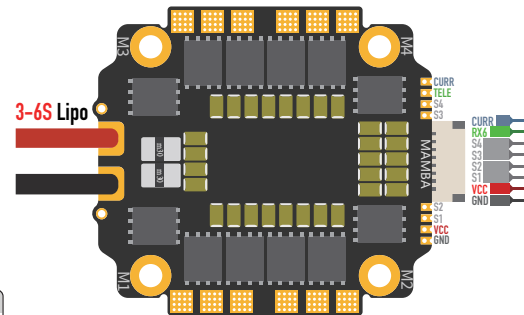
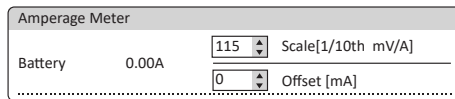
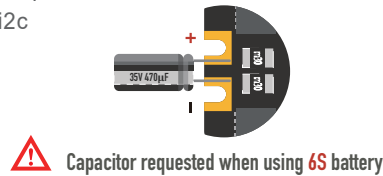
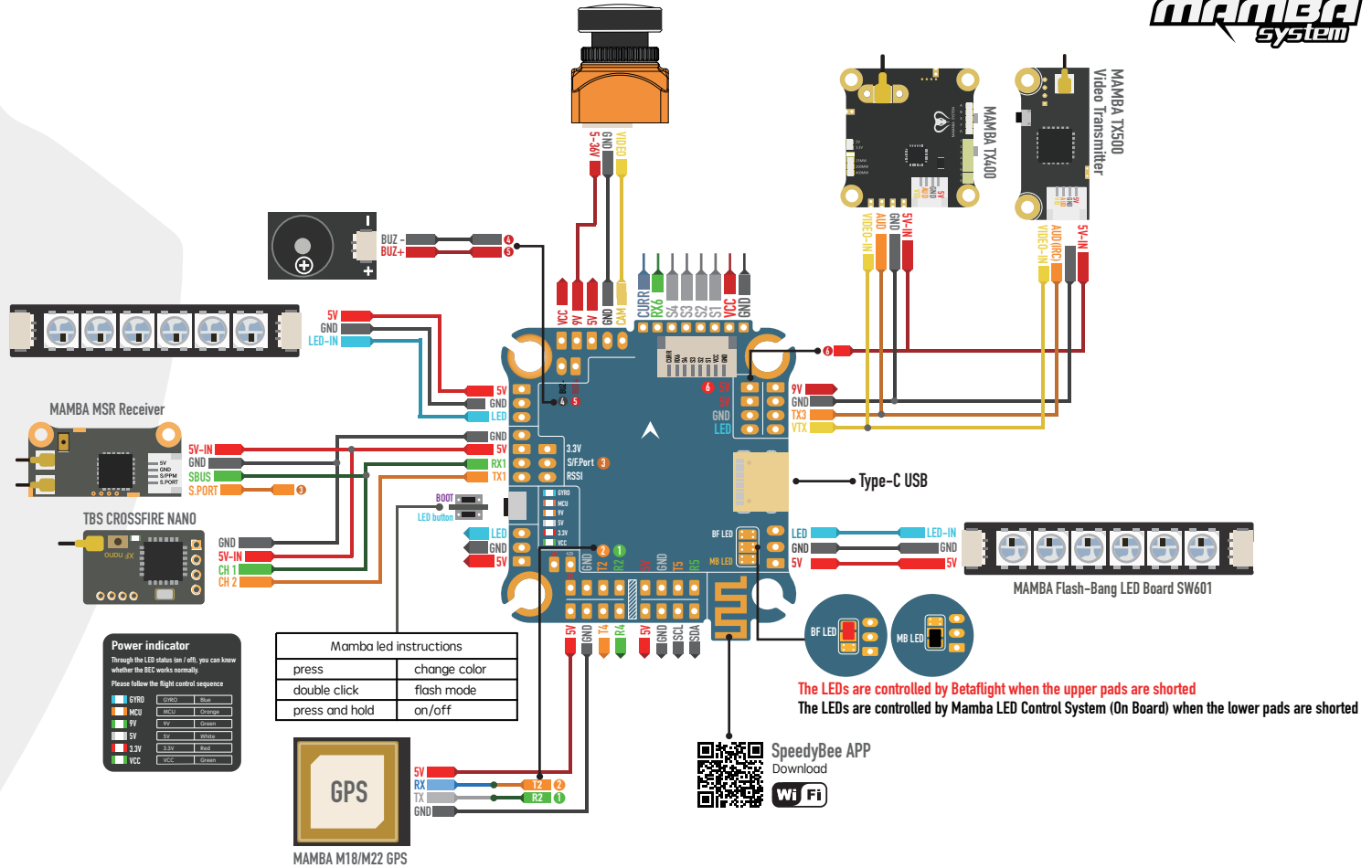
Web: www.diatone.us

Target: MAMBAF722_I2C
Main firmware STM32 F7X2
Config file MAMBAF722_I2C

When Using Compass Magnetometer,
Following Command:
set mag_i2c_device = 1
set mag_bustype = i2c

The Default Port:

UART 1 Receiver
UART 2 Vacancy
UART 3 VTX
UART 4 WIFI
UART 5 S/F.Port
UART 6 TELE



MAMBA F60 PRO ESC

ESC

CURR	Yes
Telemetry	Yes
Output Current	60A
Peak Current	75A
Input	3-6S Lipo
BLheli-32	Yes
Target	MAMBA F60 PRO
Protocol	Dshot 300/600/1200
Mounting	30.5×30.5mm, Ø 3
Size	45.0×41.0×6.5mm
Weight	15g

MAMBA STACK

FC :MAMBA Basic APP F722 MK I
ESC:MAMBA F50



Stack Specifications:

MCU	STM32F722RET6
Frequency	216MHz
GYRO	MPU6000
OSD	AT7456E
Blackbox	16M Memory
Uarts	6 Set
Receiver	TBS/SBUS/IBUS/DSM
I2C	Yes
RSSI Pad	Yes
F.Port	Yes
Buzzer Pad	Yes
CURR Pad	Yes
ESC Signal	4 Set
BEC 3.3V	0.5A
BEC 5V	3A
BEC 9V (DJI Power)	3A
MB LED	Yes
BF LED	Yes
WIFI	Yes
Input	6S Lipo
TVS Protection	Yes
Soft Ware	Betaflight
Mounting	30.5×30.5mm/M3
Size	38.0×41.5×7.5mm
Weight	9.5g

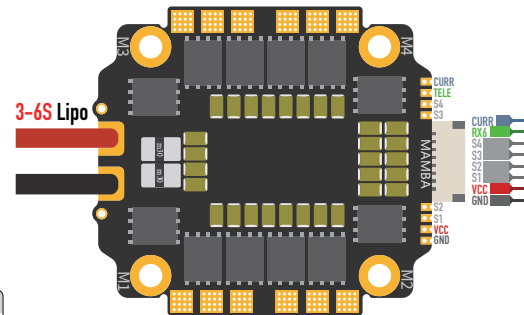
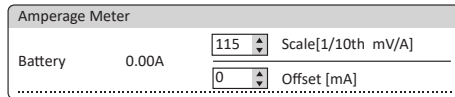
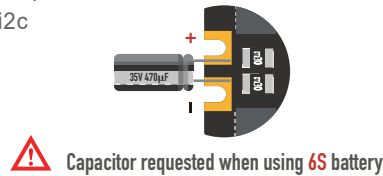
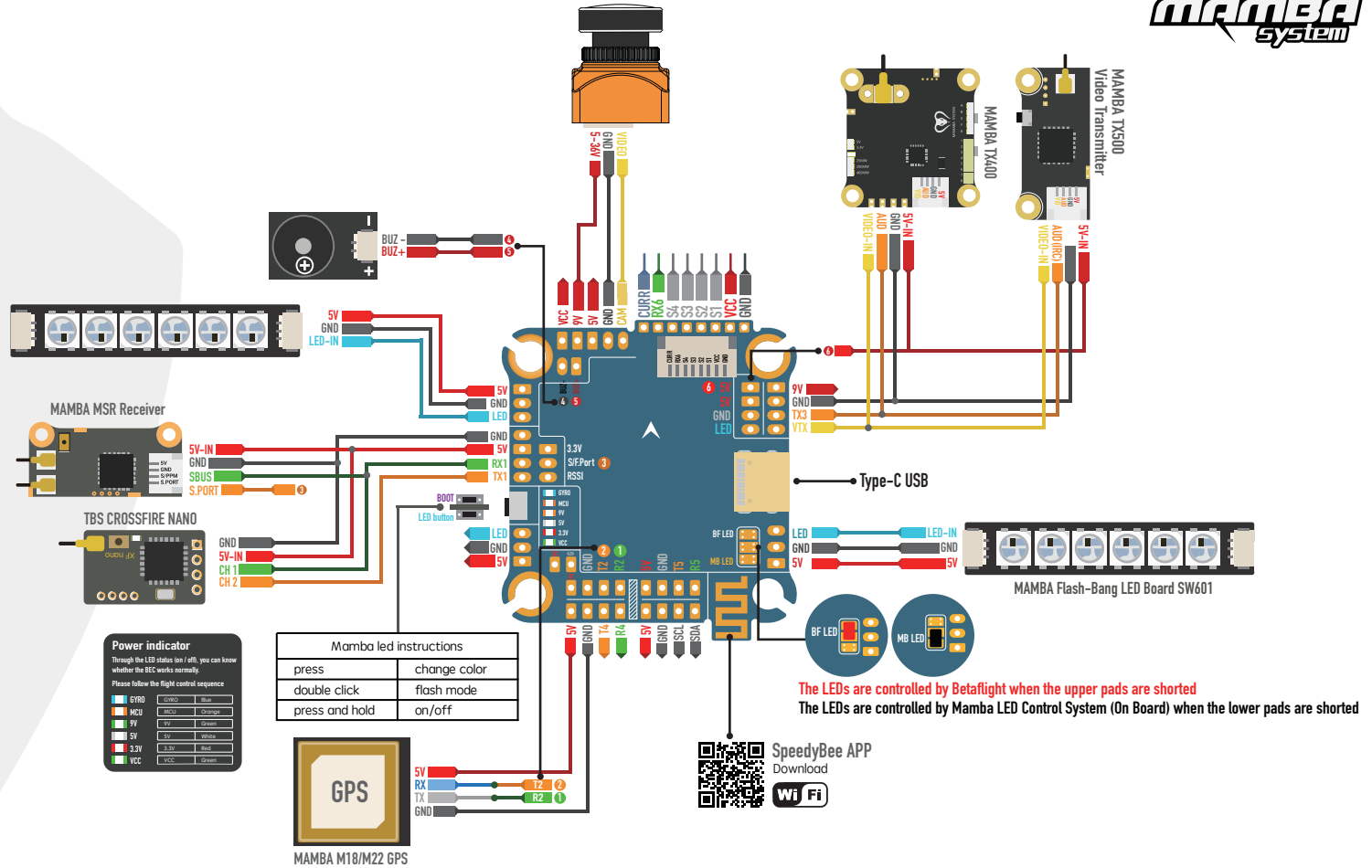
Web: www.diatone.us

Target: MAMBAF722_I2C
Main firmware STM32 F7X2
Config file MAMBAF722_I2C

When Using Compass Magnetometer,
Following Command:
set mag_i2c_device = 1
set mag_bustype = i2c

The Default Port:

UART 1 Receiver
UART 2 Vacancy
UART 3 VTX
UART 4 WIFI
UART 5 S/F.Port
UART 6 TELE



MAMBA F50 ESC

ESC

CURR	Yes
Output Current	50A
Peak Current	55A
Input	3-6S Lipo
BLheli-32	Yes
Target	CH40
Protocol	Dshot 300/600
Mounting	30.5×30.5mm, Ø 3
Size	45.0×41.0×6.5mm
Weight	15g